

November 14, 2019

City of Colorado Springs – Planning and Community Dev. Dept.  
30 S. Nevada Ave., Suite 105  
Colorado Springs, CO. 80903  
(719) 385-5369  
ATTN: Tasha Brackin, AICP

RE: 1721 W. Uintah Ave.  
Family Pet Crematory – Crematory conditional use  
Parcel Number: 7412212002

Dear Ms. Brackin:

On behalf of The Family Pet Crematory, Kelker LLC, the firm of James W. Nakai & Assoc would like to propose that the existing 1,760 SF facility previously used as a Veterinary Clinic be allowed to house a Pet Crematory in the facility as a stand alone use with no other activities occurring. The building will house a new Matthews International Pet Cremation Systems, and will only cremate small animals. This system will be new technology and is very efficient and is environmentally friendly. The product data is attached to this letter for your review and information.

The SF of building for the site will not increase, and for the most part this building will not be an occupied space. However, the existing parking of the site, is still more than what is required (13 provided vs. 5 required)

We feel that this is a justified request in that the amount of traffic will be minimal, and much less than an active clinic and will not pose any burden on surround neighbors. The Crematory itself is self-contained, and neighbors will not see or notice any smells of any sorts from this unit.

No additional drive areas/ or other revisions to the site will be required for this change.

Please let us know if you require any other documentation for this project.

Sincerely,

JAMES W. NAKAI & ASSOCIATES, P.C.



James W. Nakai, AIA  
President

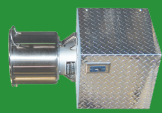
## Accessories

### ECP-200 Electric Cremains Processor



- Key Features**
- Reduces cremated remains to powder
  - 30 seconds or less processing time
  - Stainless steel tray for cooling & cleaning prior to processing

### ACP 200 Electric Cremains Processor



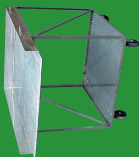
- Key Features**
- Reduces cremated remains to fit a standard urn
  - 30 seconds or less processing time

### PLT-JBS Pet Hydraulic Lift Table with Battery power



- Key Features**
- Battery powered hydraulics for raising & lowering
  - Digital scale for accurate weighing
  - Ease of handling pets while maneuvering within facility

### LI-Jr Pet Loading Cart



- Key Features**
- Enables single operator use
  - Handy for loading pet remains into cremator

### VPS-1 Processing Workstation



- Key Features**
- Works with ECP-200 & ACP 200 Processors
  - Captures ambient dust during processing & packaging
  - Ventless design eliminates wall or ceiling opening
  - Built in overhead lighting for convenience
  - Ease for processing & packaging of cremated remains

## Who is Matthews Environmental Solutions?

Matthews Environmental Solutions is the total provider for combustion equipment and services with a passion for the environment and the success of our clients. We are the premier manufacturer of five brands of equipment: Industrial Equipment & Engineering (IEE), ALL Crematory (ALL), GEM Environmental Systems, Furnace Construction Cremators and TodaySure. We are the global leader in sales, emission filtration, service and supplies. Meeting world standards such as Underwriters Laboratory (UL), Canadian Standards Association (CSA) and European Conformity (CE), we manufacture a wide range of cremation and incinerator systems. As the most comprehensive full-service provider, we offer a wide array of products and solutions to meet all your business requirements.

**Discover why Matthews Environmental Solutions is the most trusted name in the industry.**



Matthews Family of Companies



2045 Sprint Boulevard | Apopka, Florida 32703  
 U.S./International: +01.407.886.5533 | Domestic: 888.589.6197  
 Fax: +01.407.886.5990 | MatthewsCremation.com



# Pet Cremation Systems

## Class of Equipment

- Facility Volume: Moderate to High
- Speed: 200lb/91kg up to 350lbs/159kg per hour
- Safe Load: 750lbs/340kg up to 2,500lbs/1,134kg
- Services: Individual Pets, Partitioned & Large Communal



IEE-32 featured with "Optional" Advanced Myre2.0 control system

FIGURE 1

## The Future of Pet Cremation:

Matthews is redefining the future of pet cremation. We offer a powerful partnership that gives you access to our global resources and combines all of our engineering talents. With more than 100 years of experience and 4,500 installations in over 50 countries, we are the most trusted brand in pet cremation technology and service. Count on Matthews to help build your business for both today's challenges and tomorrow's opportunities. Visit us at [MatthewsCremation.com](http://MatthewsCremation.com).

Matthews offers three (3) highly efficient production machines to help medium to large animal care providers meet the demands of today's companion pet parents.

### Featured Models:



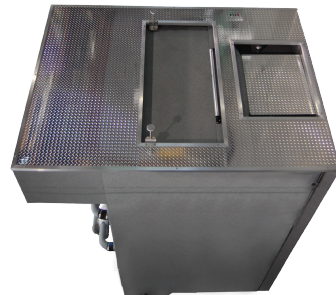
#### IEB-26 Specifications\*

- Speed: 200lbs/91kg per hour
- Safe Load: 750lbs/340.2kg
- Secondary Volume: 74ft<sup>3</sup>/2.1 m<sup>3</sup>
- Fuel Type: Natural or LP Gas
- Electrical: 220 volts, 1-Phase or 3-Phase
- Length: 14'8" (4.47m)
- Width: 6'5" (1.96m)
- Height: 8'4" (2.54m)
- Weight: 24,000lbs (10,900kg)



#### IEB-32 Specifications\*\*

- Speed: 250lbs/113kg per hour
- Safe Load: 1,000lbs/453.6kg
- Secondary Volume: 90ft<sup>3</sup>/2.55 m<sup>3</sup>
- Fuel Type: Natural or LP Gas
- Electrical: 220 volts, 1-Phase or 3-Phase
- Length: 17'6 3/4" (5.35m)
- Width: 6'5" (1.96m)
- Height: 8'4" (2.54m)
- Weight: 30,000lbs/13,605kg



#### IEB-40 Specifications

- Speed: 350lbs/159kg per hour
- Safe Load: 2,500lbs/1134kg
- Secondary Volume: 125 cubic feet (3.54 m<sup>3</sup>)
- Fuel Type: Natural or LP Gas
- Electrical: 220 volts, 1-Phase or 3-Phase
- Length: 14'3" (4.34m)
- Width: 8'7" (2.62m)
- Height: 9'6 3/4" (2.92m)
- Weight: 42,000lbs (19,051kg)

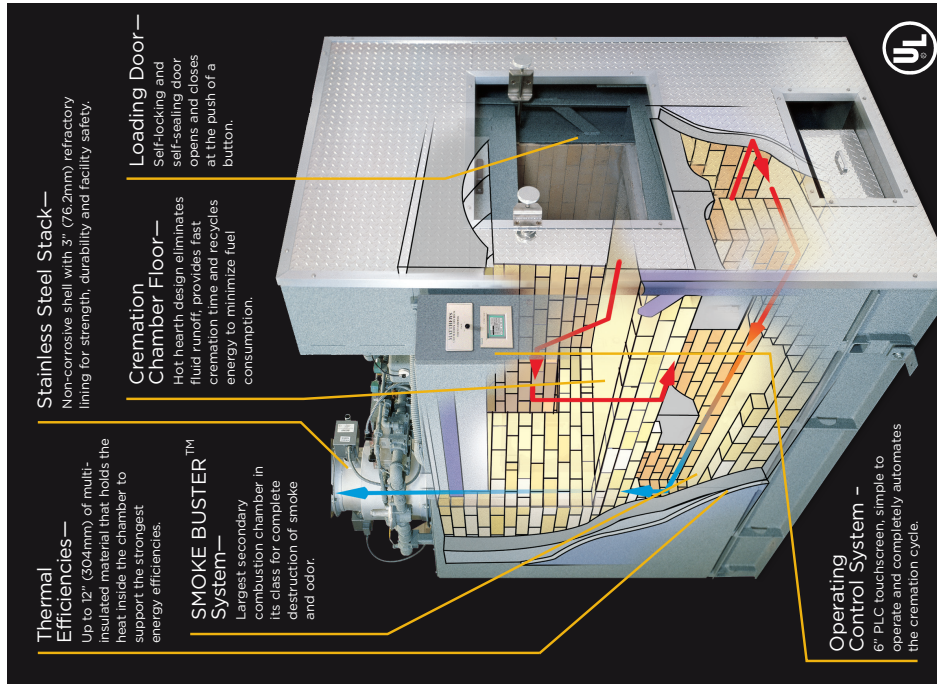
\*Featured with "Optional" temperature recorder

\*\*Featured with "Optional" Mpyre® 2.0 Control System

FIGURE 1

## Highly Advanced Engineering, Efficient Operation, Profitable Results

Matthews cremators are pre-wired, pre-piped, and pre-tested before shipment, requiring only off-loading, connection of gas, electricity and placement of the stack.



**Thermal Efficiencies** — Up to 12" (304mm) of multi-insulated material that holds the heat inside the chamber to support the strongest energy efficiencies.

**SMOKE BUSTER™ System** — Largest secondary combustion chamber in its class for complete destruction of smoke and odor.

**Stainless Steel Stack** — Non-corrosive shell with 3" (76.2mm) refractory lining for strength, durability and facility safety.

**Cremation Chamber Floor** — Hot hearth design eliminates fluid runoff, provides fast cremation time and recycles energy to minimize fuel consumption.

**Loading Door** — Self-locking door opens and closes at the push of a button.

**Operating Control System** — 6" PLC touchscreen, simple to operate and completely automates the cremation cycle.



### Mpyre® 2.0 Makes a Tough Job Easy

Managing the operation of your cremation equipment has never been easier. Our intuitive logic control system allows you to answer some basic questions prior to starting the cycle and your equipment is automatically set for maximizing operating efficiencies. It features remote capabilities that let you monitor your cremator activity, create instant performance reports and communicate with Matthews technical support via the internet from anywhere in the world.

Matthews service team can stay connected to your machine 24/7 to provide peace of mind and instant support. We are with you every step of the way.

### The Power of Partnership

- Financial ROI Analysis
- Zoning and Permitting Support
- Operator Training and Certification
- 24/7 Service Support
- Custom Engineering and Design
- Facility Layout and Design
- Third-party Finance
- Turn-Key Installation