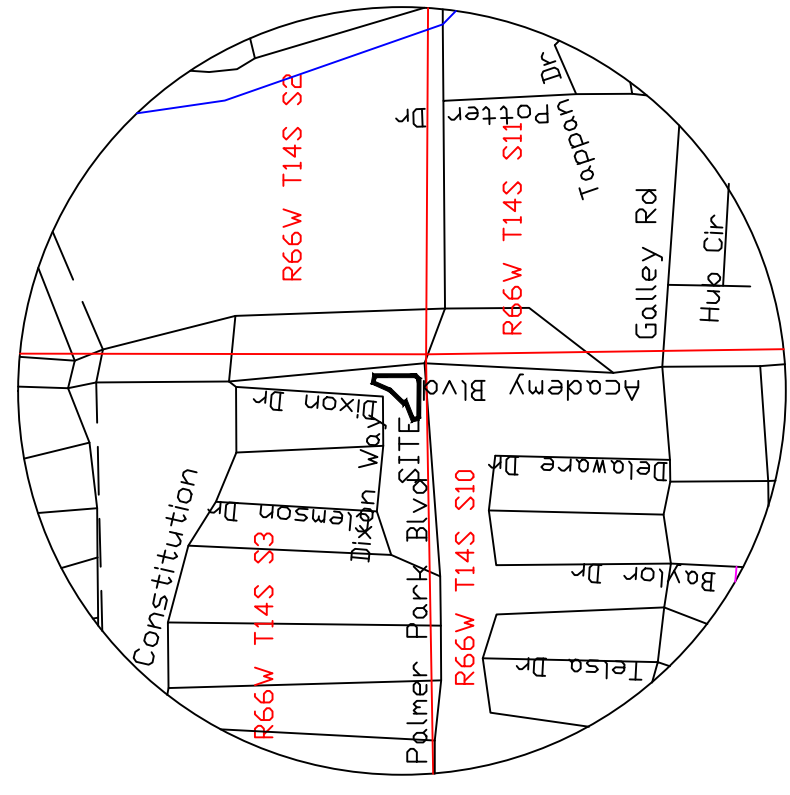
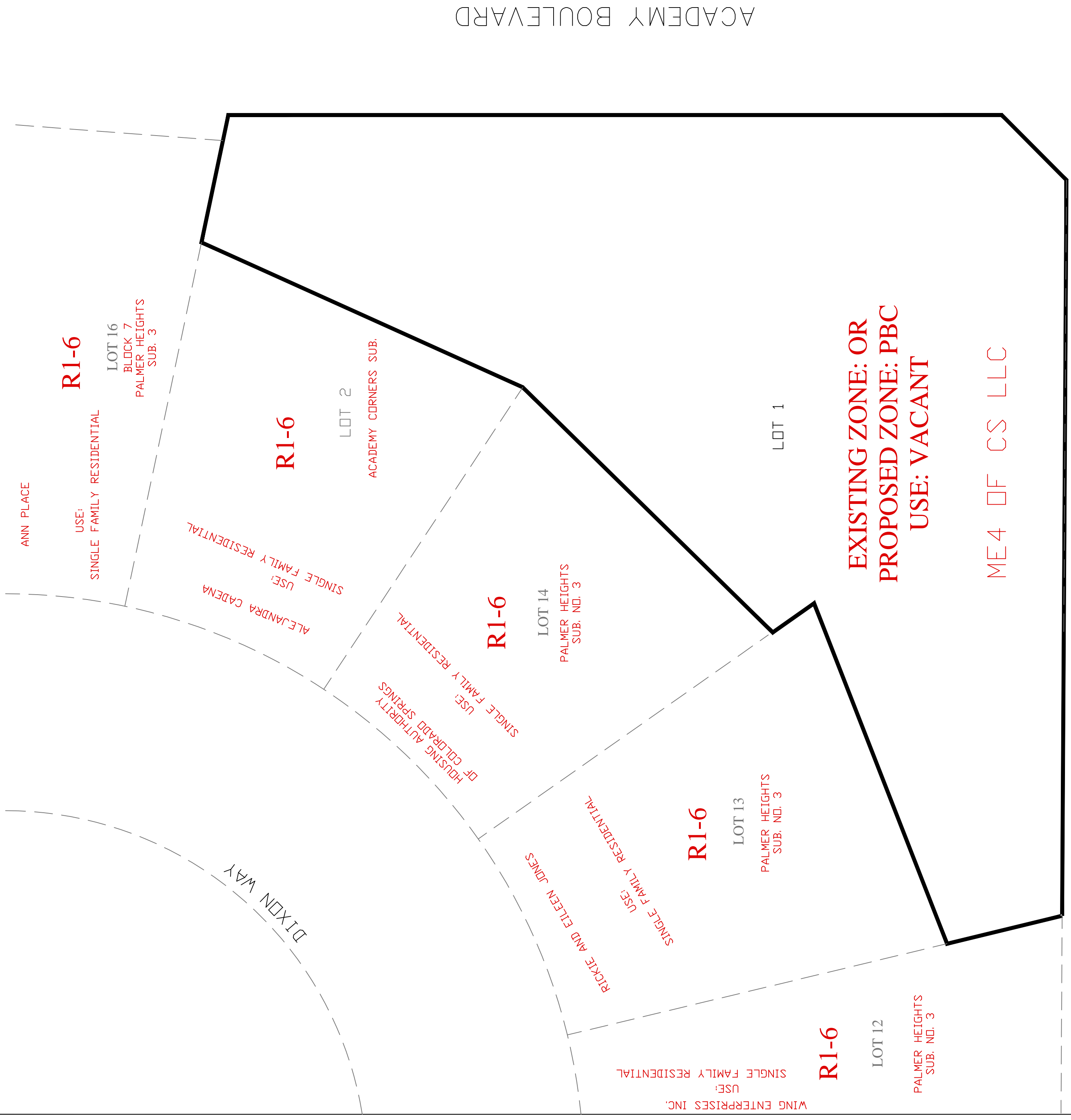


Scale 1" = 20'



VICINITY MAP  
1"=1000'



RIC PROPERTIES LLC  
LOT 1, BLOCK 1  
HARDEES SUB.  
**PBC**

USE: RETAIL  
**PBC**

DHARMESH, JIVAN  
LOT 1, BLOCK 1  
HARDEES SUB.  
USE: RETAIL  
**PBC**

**LEGAL DESCRIPTION:**

LOT 1, ACADEMY CORNERS SUB.  
TOTAL AREA: 27,780 SF

**SUUV**  
CITY OF COLORADO SPRINGS  
USE: PUBLIC SAFETY  
UNPLATTED

Prepared by the office of:  
Oliver E. Watts, Consulting Engineer, Inc.  
614 Elkton Drive  
Colorado Springs, CO 80907  
(719) 593-0173 office  
(719) 585-9660 Fax  
oliver@owatts.com  
www.owatts.com  
Celebrating over 39 years in business

DRAWN BY: DE. WATTS DATE: 3-18-19 DWG. NO.: 18-5260-04 PROJECT: PALMER PARK BOULEVARD	APPROVED BY: PROJ. NO.: DWG. NO.:	REVISIONS 1426 NORTH ACADEMY LLC LOT 1, DOCHS BROTHERS AT ACADEMY <b>C5/CR</b> USE: RETAIL	DLIVER E. WATTS CONSULTING ENGINEER COLORADO SPRINGS	PROJECT 1560 N. ACADEMY BLVD. LOT 1, ACADEMY CORNER SUB. COLORADO SPRINGS	SHEET NO. 1 OF 1
--	---	---	--	--	---------------------

**ZONE CHANGE**