

# Community Plan Program Update

February 2, 2023

Daniel Besinaiz, Senior Planner, & Team



# Agenda



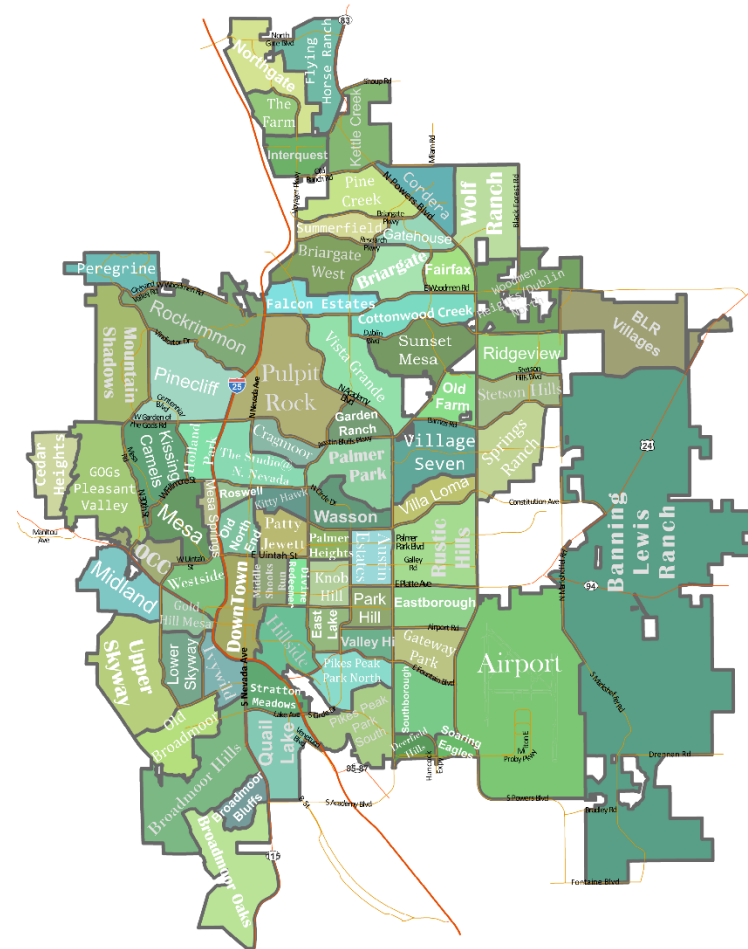
- Community Planning Program Overview
  - Context and Purpose
- Southeast Strong Community Plan
  - Approach and Status
- Greater Westside Community Plan
  - Introduction to MIG Team
  - Approach and Status



# Community Planning Program Overview



- PlanCOS recommended 6 key initiatives for implementation:
  - Update Zoning & Subdivision Code (RetoolCOS)
  - Intermodal Transportation Plan (ConnectCOS)
  - Attainable Housing Plan (HomeCOS)
  - Smart Cities Initiative (SmartCOS)
  - Annexation Plan Update (AnnexCOS)
  - Community Planning Program

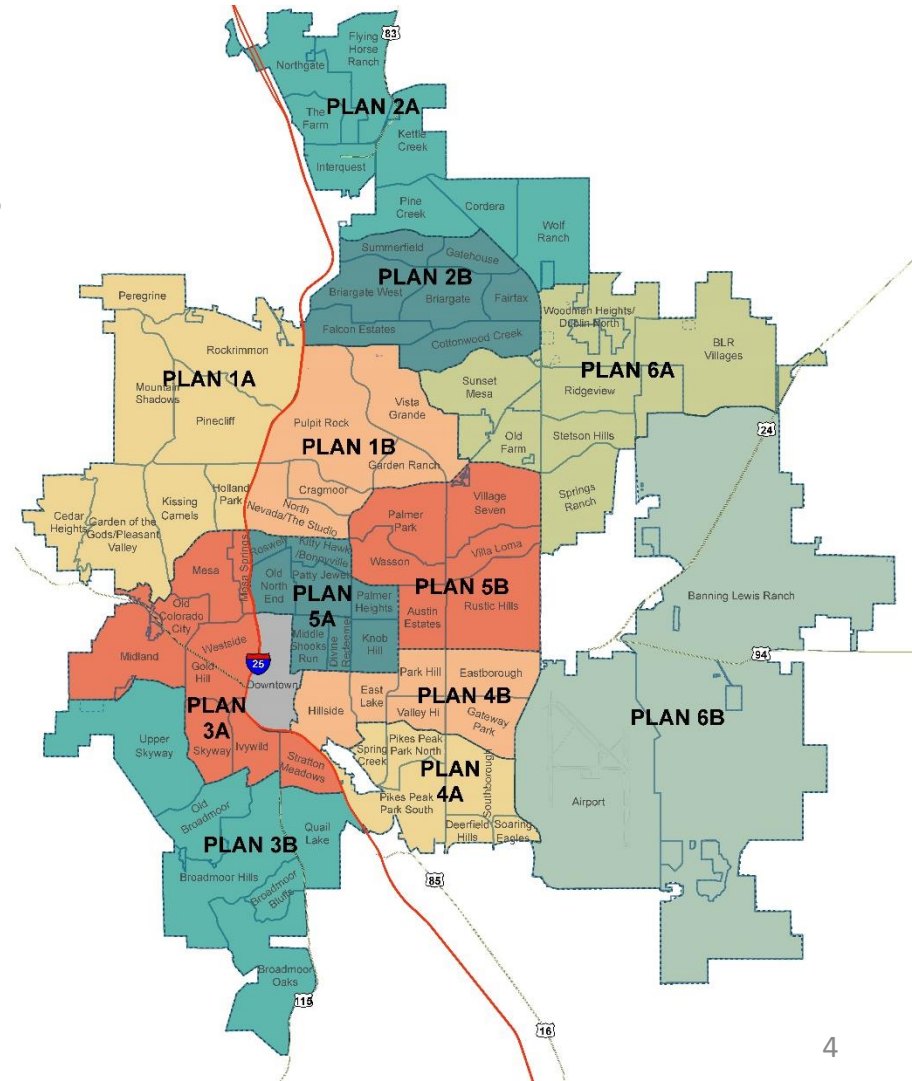


THE NEIGHBORHOODS OF  
COLORADO SPRINGS

# Community Planning Areas & Purpose



- 12 total planning areas; each generally encompassing ½ of a Council district, including about 5-10 PlanCOS neighborhoods.
- Apply larger visions in PlanCOS in a manner which addresses the unique characteristics and needs of different areas within the Plan's boundary.
- Serve as a guide for evaluating private development applications and informing City initiatives and priorities.







# Consultant Relationship



- MIG is our on-call community plan consultant
  - Chosen through a competitive process
  - National and State expertise and experience
  - Primary resource for Greater Westside Plan including associated health assessment
  - Also assisting with branding, and consistent process and format for all plans
  - May assist in final stakeholder process for Southeast Strong



# Overall Program Schedule



- Southeast Strong Plan expected to be presented for adoption around third quarter of 2023
- Greater Westside Plan expected to be presented for adoption around fourth quarter of 2023
- Each plan takes about 18 months
- No more than 2 plans underway at any one time
- Contingent on available staff and funding resources

# Southeast Strong Community Plan



Peter Wysocki & Mike Tassi

- Director & Assistant Director

Carl Schueler, AICP

- Project Lead

Daniel Besinaiz

- Project Manager, Point of Contact

Page Saulsbury

- GIS & Public Engagement Support

Steering Committee

- Advisory Support

Kimley-Horn

- Health Assessment Technical Team

## Project Team



# Southeast Strong Community Plan



## Steering Committee

Yolanda Avila (City Council)	Laura Nelson (Apartment Assoc. )	Janet Brugger (Black Chamber of Commerce)	Joe Aldaz (Hispanic Chamber of Commerce)
Dr. Wendy Birhanzel (Harrison District 2)	Shawn Gullixson (Vectra Bank)	Joyce Salazar (RISE Coalition)	Darsey Nicklassen (Places Management)
Rick Hoover (CONO)	Marla Luckey (EPCO Health)	Matt Craddock (Craddock Commercial)	Susan Davies (TOSC)
Jamie Phahl (EPCO Health)	Pastor Ben Anderson (Solid Rock CDC)	Pam Shockley- Zalabak (CommuniCon, Inc.)	Col Jennifer Fitch (Peterson AFB)
Julie Ramirez (Resident Rep)		Latrina Ollie (Resident Rep)	







# Southeast Strong Community Plan



## Meetings and Outreach (mostly during COVID-19 Pandemic)

- Steering Committee Meetings
- "Survey of Surveys"
- Southeast Fall Festival
- Harvest Festival



# Southeast Strong Community Plan



## Sources

- Southeast Strong Health Assessment
- Air Pollution in Southeast Report
- Urban Heat Island and Green Space in the Southeast Report
- Urban Heat Island in the Southeast Report
- 2021 South Academy Blvd Corridor Progress and Measures Report

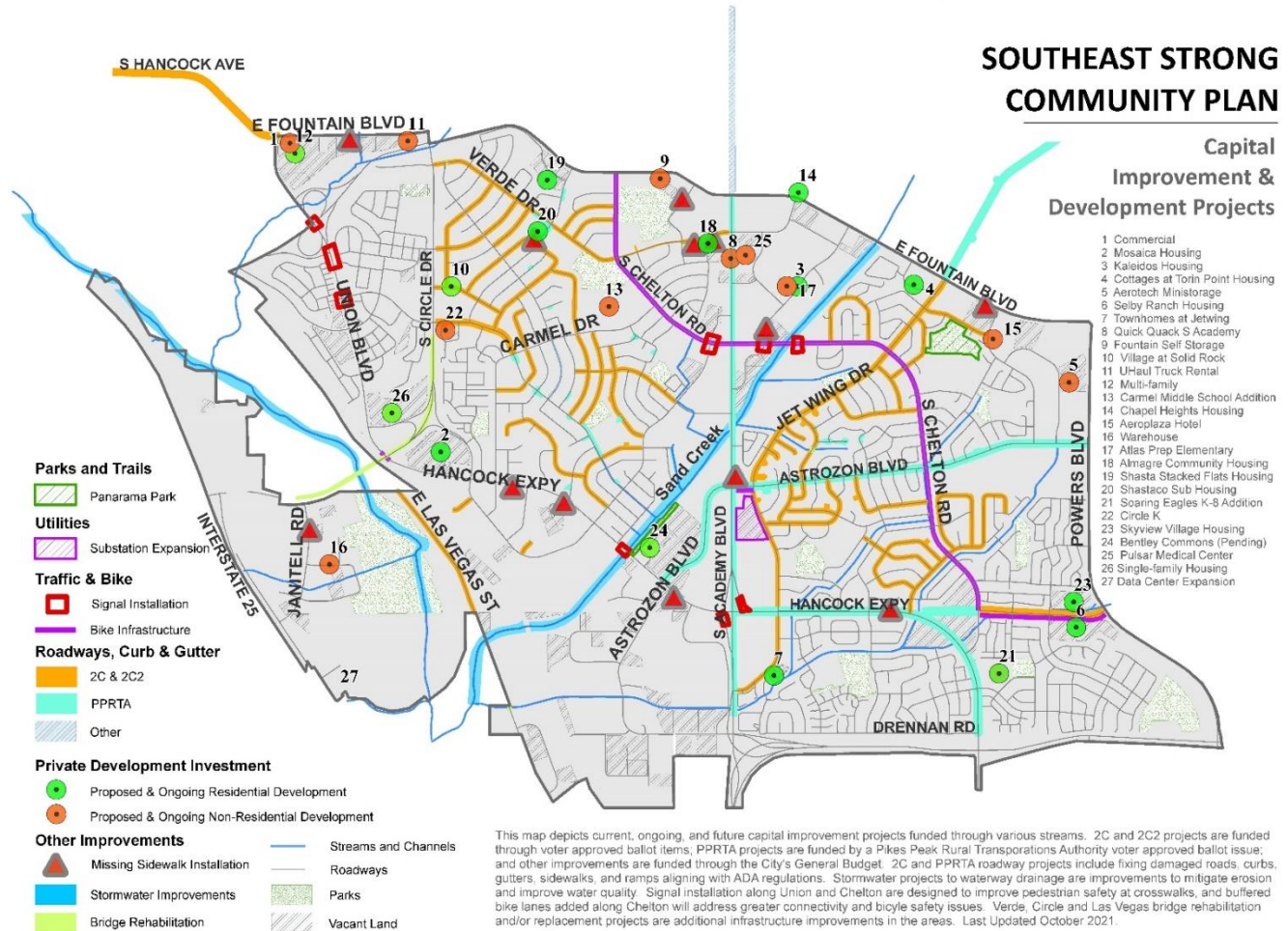


Aerial image of Spring Creek neighborhood with surface temperature overlay.

# Southeast Strong CP Inventory Maps



## Alignment with Other Agencies





# Southeast Strong Community Plan



## Big Ideas

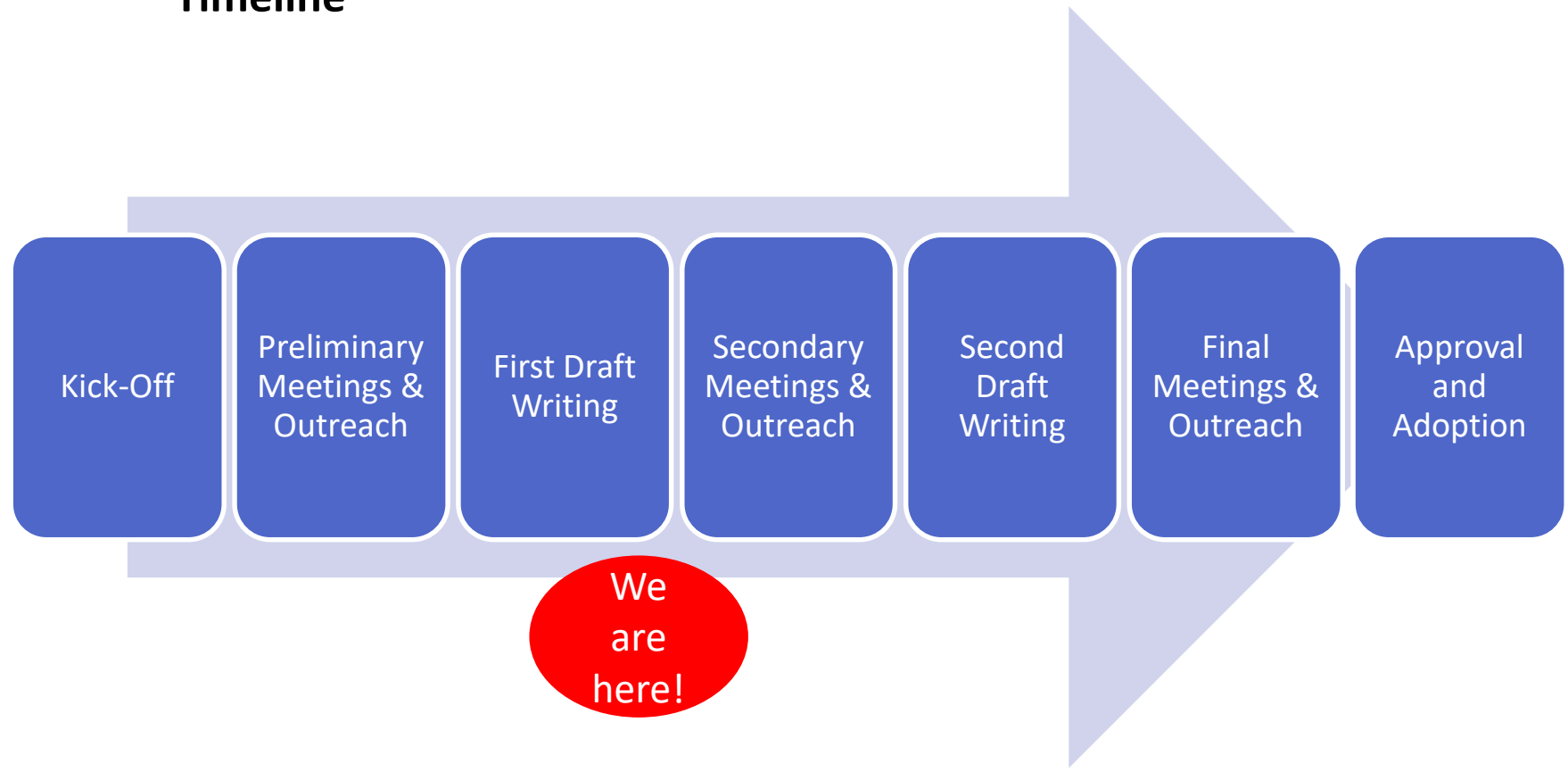
- Reflect and Celebrate our Diverse Culture
- Live Better, Live Longer
- Upgrade How We Move
- Create Special Places and Community Hubs
- Grow and Support Our Businesses and Entrepreneurs
- Support our Safety



# Southeast Strong Community Plan



## Timeline



# Greater Westside Community Plan



## Community Plan

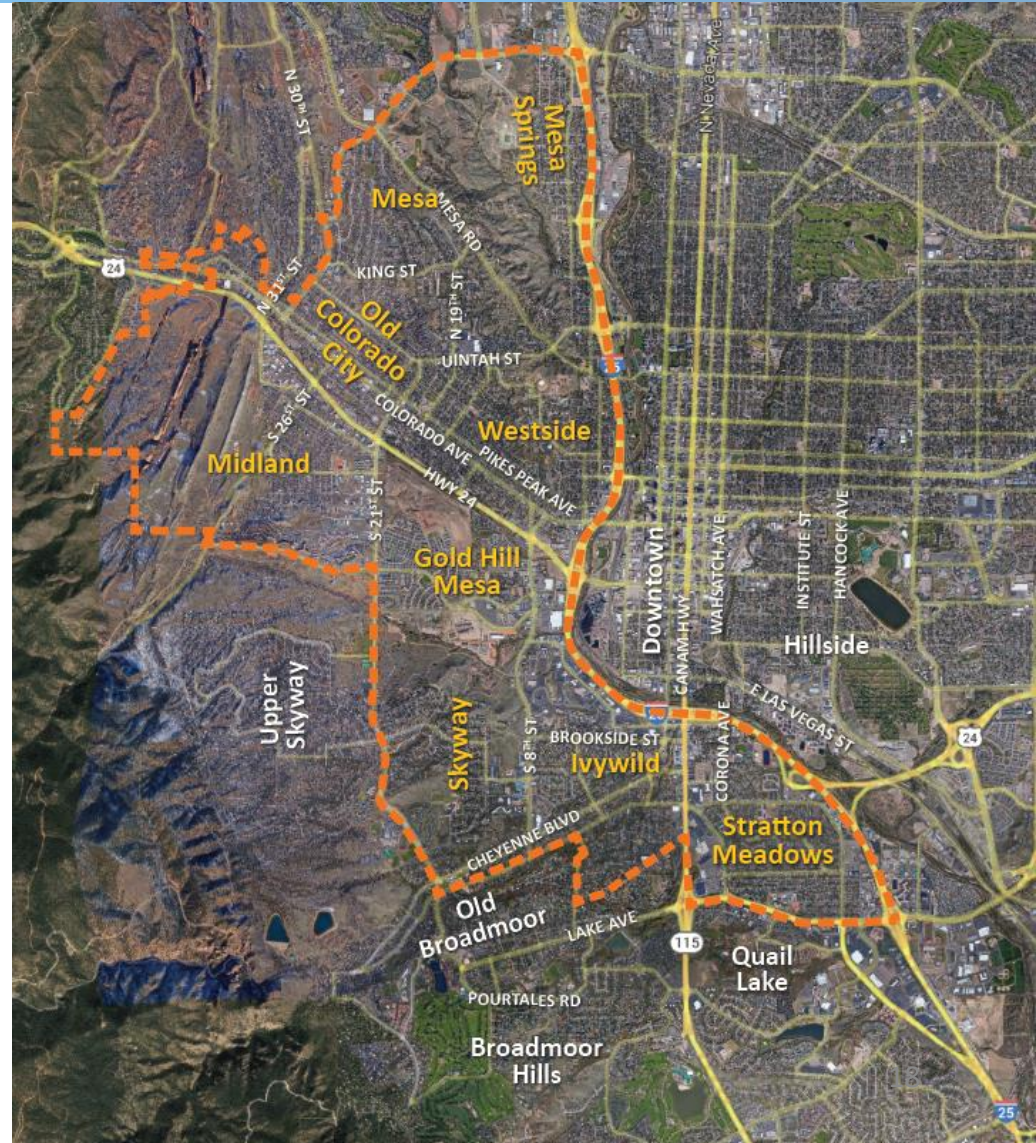
- Benefit from looking at multiple neighborhoods and the shared destinations between them
- Include multiple inter-related topics:
  - Future land use
  - Built form and character
  - Multimodal mobility
  - Parks and open space
  - Amenities and services
  - Placemaking and programming
- Explore trade-offs and set priorities
- Establish an implementation strategy

# Greater Westside Community Plan



## The 3A Area

- 9 neighborhoods
- Primarily residential
- Wraps Downtown
- Large parks & open spaces
- Numerous destinations:
  - Red Rock Canyon
  - Old Colorado City
  - Bear Creek Park
  - Ivywild





# Greater Westside Community Plan



## Area Profile

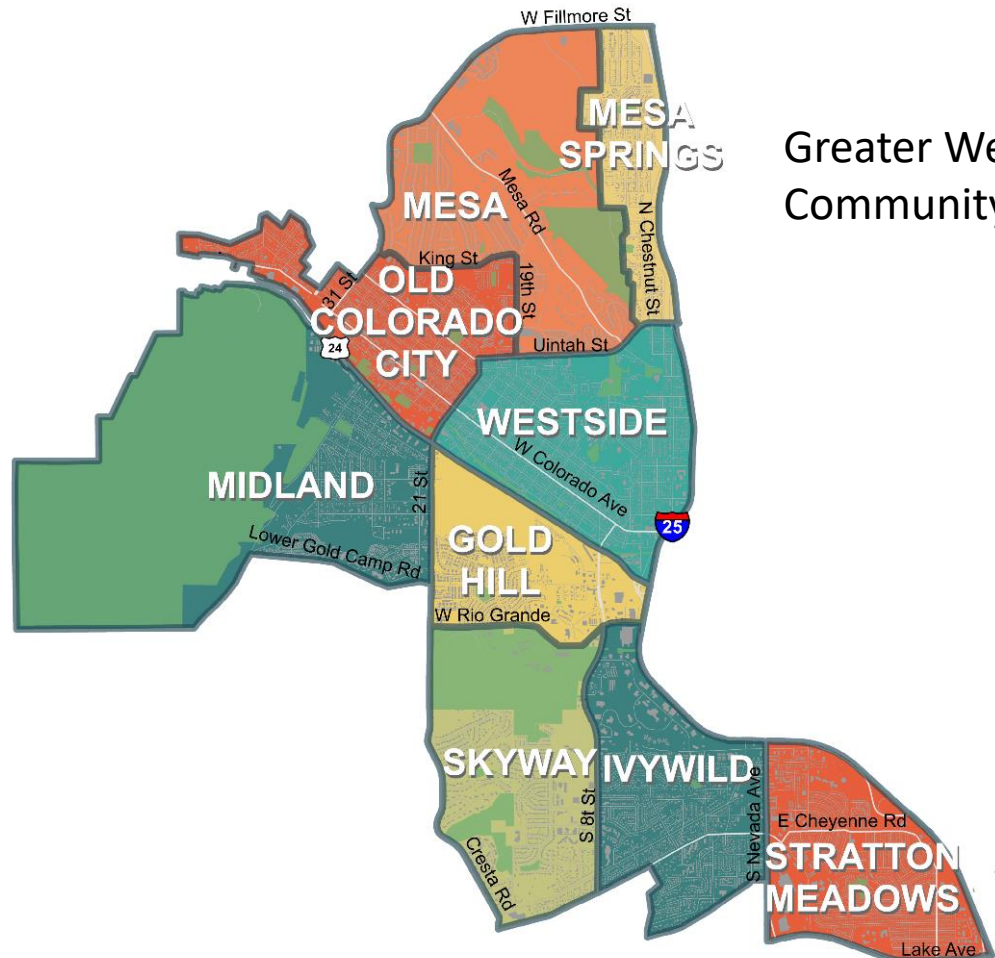
Plan Area – 7,741 ac.  
Vacant Land – 505 ac.

White alone – 29,900  
Hispanic – 5,947  
Black alone – 1,394

Housing units – 20,213  
Owned housing – 9,462  
Rented housing – 9,916

## Zoning

Residential – 62%  
Commercial – 16%  
Industrial – 5%  
Parks – 14%



Greater Westside Community Plan

# Greater Westside Community Plan



## The City – Roles & Responsibilities



- **Have institutional knowledge** around PlanCOS and other previous efforts
- Ensure all residents and businesses in the area have **opportunities to participate** and provide input and feedback
- **Help focus and bring context** to the big picture
- **Have resources** to help engage other departments and agencies
- Also share a common goal – to **make 3A a great place to live, work, and play!**



# Greater Westside Community Plan



## The Planning Team – **Our Roles & Responsibilities**



- **Guide the process** so that we can cover all key topics
- **Bring perspectives from other communities and plan processes**
- **Engage key stakeholders and the broader community**
- **Conduct technical analyses** to pair with community input
- **Develop recommendations and implementation strategies**
- **Listen carefully to community feedback and input** and incorporate it into the final plan

# Greater Westside Community Plan



## Neighborhood Network Board - Roles

- **Provide advice and guidance** on the planning process
- **Provide input and feedback** on draft products
- **Serve as an ambassador** for the Plan
- **Summarize input and feedback** from others
- **Contribute to at least one formal outreach event**
- **Distribute information** through your community/organization
- **Provide feedback, guidance and support during the adoption and implementation** of the Community Area Plan

# Greater Westside Community Plan



## Neighborhood Network Board

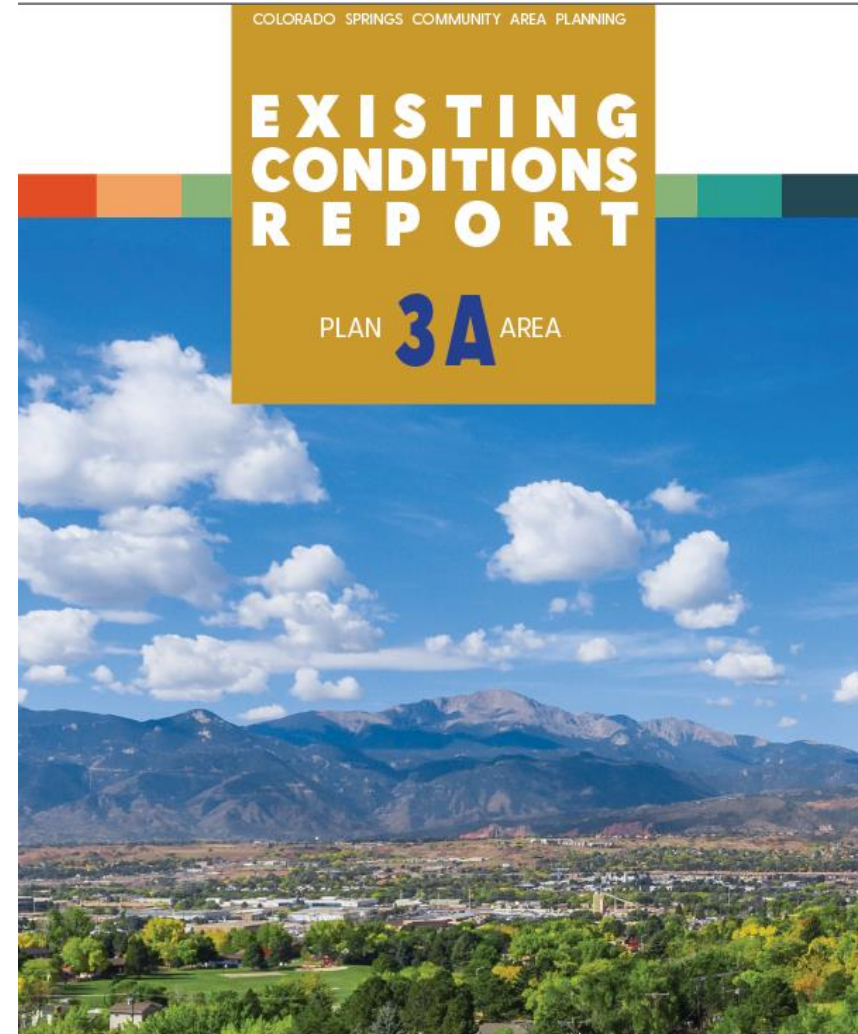
Jo Lucey Ivywild	Steven St. James Ivywild	Courtney Benson Midland	Andrew Hoskins Mesa Springs
Cathy Verdier OCC	Mark Tatro Mesa Springs	Eugene Beal Mesa Springs	Monica Hobbs Westside
Justin Trudeau Westside	Judy Beerbaum Mesa	Lonnie Miera Stratton Meadows	Valerie Yellum Lower Skyway
	John Olsen Gold Hill Mesa	Amanda Lee Stratton Meadows	

# Greater Westside Community Plan



## Existing Conditions

- Relevant Plans
- History
- Zoning & Land Use
- Connectivity & Transit
- Infrastructure & Projects
- Neighborhood Profiles
- **Available Online**



# Greater Westside Community Plan



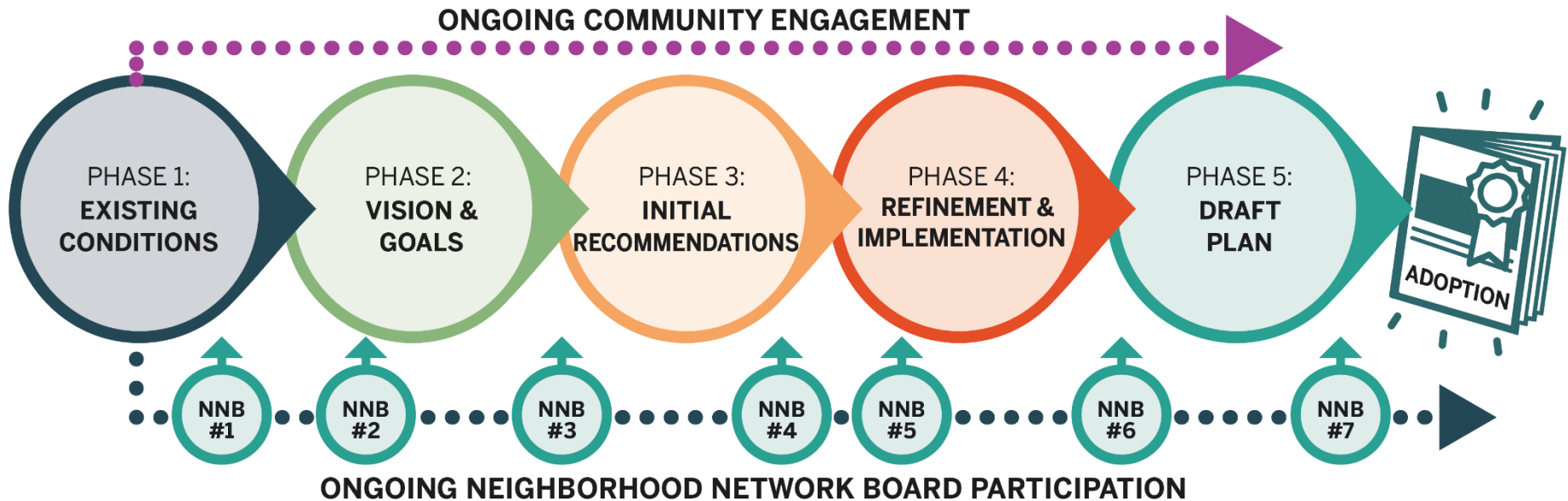
## Small Group/ Stakeholder

## Community-Wide

## Broadcast Notifications

- 
- |  |  |  |
|--|--|--|
| <ul style="list-style-type: none"><li>• Focus Groups</li><li>• Neighborhood Network Board</li><li>• City Council/Planning Commission Workshops and Updates</li></ul> | <ul style="list-style-type: none"><li>• 3 Community Meetings</li><li>• 2-3 Online Surveys</li><li>• Additional meetings or pop-ups</li></ul> | <ul style="list-style-type: none"><li>• Social media, e-mail, NextDoor and web announcements for meetings, engagement tools, and educational posts</li></ul> |
|--|--|--|

# Greater Westside Community Plan





# Questions, comments, input?



## Contact Info:

Project Manager – Daniel Besinaiz

Senior Planner

(719)385-2227

[daniel.besinaiz@coloradosprings.gov](mailto:daniel.besinaiz@coloradosprings.gov)

