



Pikes Peak Area  
Council of Governments  
Communities Working Together



Colorado Springs  
Regional  
Joint Land Use Study  
Implementation

Colorado Springs  
City Council

Monday, July 8, 2019

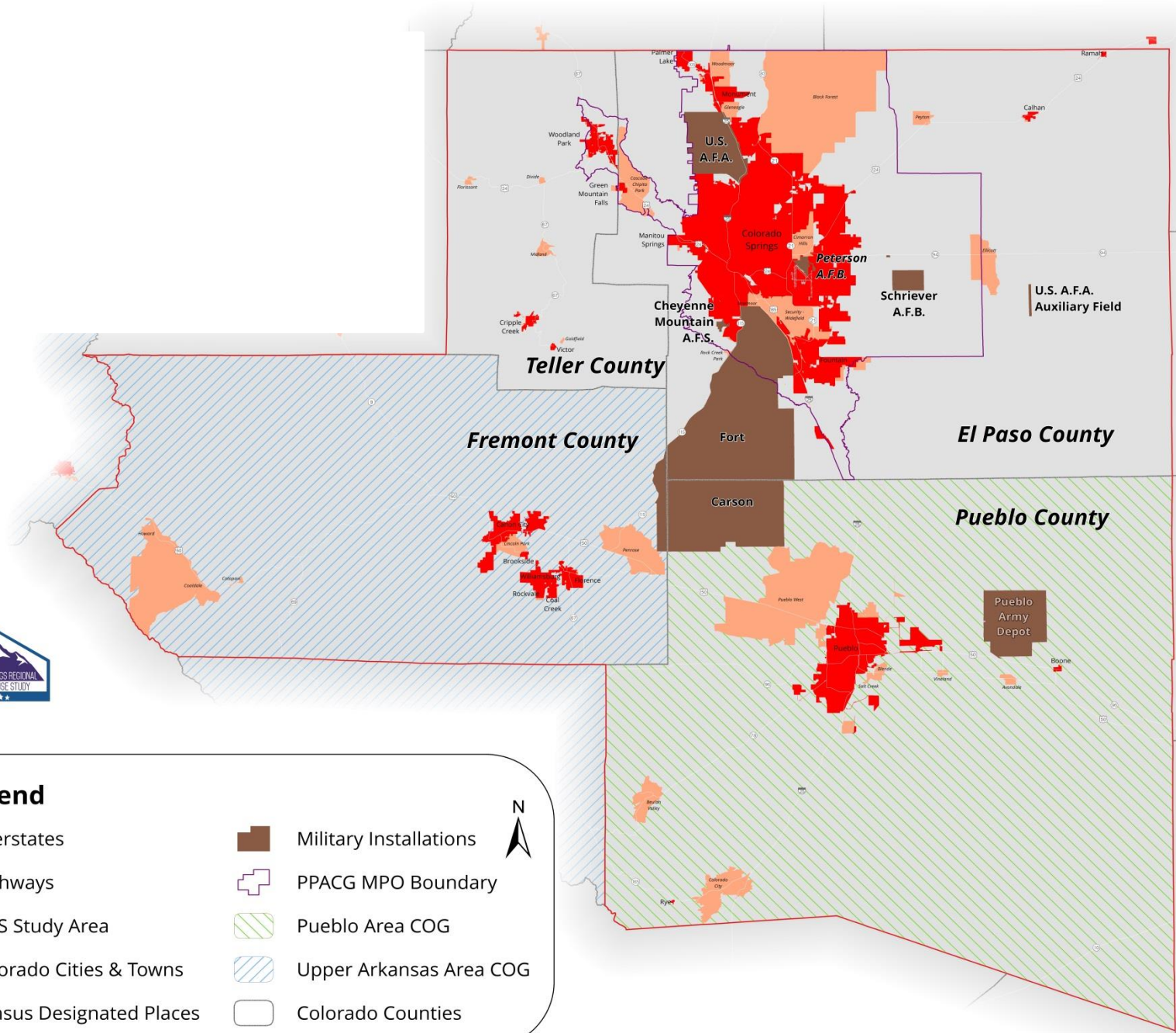
Brian Potts, JLUS Program Manager

Pikes Peak Area Council of



### Legend

- Interstates
- Highways
- JLUS Study Area
- Colorado Cities & Towns
- Census Designated Places
- Military Installations
- PPACG MPO Boundary
- Pueblo Area COG
- Upper Arkansas Area COG
- Colorado Counties



# Importance for Our



## Community

- Installation employment is rapidly growing and driving growth; likely to have more personnel choose to live further south
- Peterson AFB and Schriever AFB are candidates for Space Command
- Ongoing goal: Help stakeholders incorporate encroachment management into long-term policies, institutional

Study Area Economic Impact Snapshot*	
Military-generated Employment	106,913
Labor Income	\$7,573,870,125
Total Installation Expenditures	\$1,549,993,900
Military-generated Economic Output	\$17,228,775,933
*2014 data compiled by Summit Economics, LLC	

County	Land Area (Sq. Mi)	Population 2015*	Population 2025*	Population 2045*
El Paso	2,130	677,022	791,904	1,024,521
Fremont	1,534	46,559	50,074	57,598
Pueblo	2,398	163,348	180,944	215,312
Teller	559	23,461	27,234	31,135
<b>Totals</b>	<b>6,621</b>	<b>910,390</b>	<b>1,050,156</b>	<b>1,328,566</b>
*Estimates per State Department of Local Affairs Demographic Office				

# Implementation Grant



## Steps

Task 1: Stand-up JLUS Implementation Policy Committee and Implementation Technical Committee

Task 2: Military Information Brochures for Public Distribution/Web Info

Task 3: Regional Energy/Radar Site Mapping

Task 4: Peterson AFB Sub-area plan/mapping

Task 5: Air Force Academy Sub-area plan/mapping

Task 6: Develop standardized real estate disclosure language

Task 7: Identify appropriate funding mechanisms, and coordinate with relevant stakeholders and government



# Actions: March 2019 -



# June 2020

- Mar 2019: OEA JLUS Implementation Grant approved
- Mar 2019: Final JLUS Report Posted on PPACG.org website with JLUS implementation information
- Apr-June 2019: Develop work plan and meet with stakeholders
- July 2019: Stand-up JLUS Implementation Policy / Technical Committee



# Actions: March 2019 -



## June 2020

- July 2019: Begin Regional Energy/Radar Site Mapping
- July 2019-June 2020: Work with Developers, Realtors, and Airspace Professionals to Draft Standardized Real Estate Disclosure Language
- July 2019-June 2020: Work with Military/Communities on Information Brochures for Public Distribution/Web Info
- July 2019-June 2020: Sub-area plan/mapping for the Peterson AFB Sub-area plan and Air Force Academy

# Key Findings: Colorado



- Military training over El Paso County & the City of Colorado Springs requires good communication/coordination between citizens, community leaders, and military officials to reduce impacts (Colorado Springs Airport use; flights over the county; training on Fort Carson; AFA flight training)
- Citizens want more information on what training activities occur around and above their communities
- AFA & Fort Carson train above/around El Paso County & the City. However, jets from Buckley AFB and aircraft from outside our region use our airspace
- Stormwater, wildfire management, and transportation issues were important to both military and civilian stakeholders
- Potential economic opportunities for the region

# JLUS Program Activities

- **Regional Energy/Radar Site Mapping:** JLUS staff will work with FAA/airport to identify airspace/flight considerations for renewable energy siting and inventory these features
- **Wildfire:** JLUS staff will support continue to seek opportunities for cooperation on wildfire issues





# Implementation Details

- **Informational Resources:** JLUS staff will work with stakeholders to create handouts/webpages on noise, flight, convoys, training, and other topics
- **Transportation:** PPACG staff will continue to work with City staff on any improvements to Hwy 24, 94, 115, & I-25; or any new convoy or rail activities that create

## SH 94 - Access Management Plan

### General Notes:

- CDOT will administer SH 94 as a non-Road A (NRA) in compliance with the Access Code. The Access Management Plan (AMP) will be reviewed by CDOT and El Paso County to submit to SH 94 to a more restrictive standard than the NRA.
- El Paso County's SH 94 Camp is a "No-Stop" that identifies potential future lane uses and "no-stop" access along the SH 94 Corridor's AMP.
- El Paso County's Access Management Plan (AMP) identifies significant concerns from the County Access Management Plan. As a condition of the highway and MTCF (representative) there is to be considered for future expansion including additional lanes for future traffic signs based on traffic projected and land development approvals.
- No access will be approved that does not comply with the CDOT Access Code for a Non-Road A/Road.
- El Paso County will process land use submissions and access requests consistent with the Land Development Code.
- Any city budget was intended to address various access points for road closures, so work, and other critical work, without that presents connectivity and issues with facilities, including mail or door-to-door, maintain adequate geographic response a public safety routes through new access or local facilities to maintain a community identity and to enhance the long-term stability of developments and to create high density areas in certain stability nodes.

### Sheet Legend

- AMP Segment**
- Segment 1 - 15th Street to I-25 to I-70
  - Segment 2 - I-70 to I-25 to I-70
  - Segment 3 - I-25 to I-70 to I-25
- Other Symbols:**
- Stop Controlled Intersection
  - Signalized Intersection
  - Activity Node
  - Intermodal Future Signal



### Segment 1 General Notes:

- The Access Management Plan (AMP) at MP 7.075 and the Access Management Plan (AMP) at MP 7.075 was possible to create a more restrictive standard than the NRA.
- The SH 94 Corridor's AMP identifies significant concerns from the County Access Management Plan. As a condition of the highway and MTCF (representative) there is to be considered for future expansion including additional lanes for future traffic signs based on traffic projected and land development approvals.

### Segment 2 General Notes:

- Access Management Plan (AMP) identifies significant concerns from the County Access Management Plan. As a condition of the highway and MTCF (representative) there is to be considered for future expansion including additional lanes for future traffic signs based on traffic projected and land development approvals.
- The SH 94 Corridor's AMP identifies significant concerns from the County Access Management Plan. As a condition of the highway and MTCF (representative) there is to be considered for future expansion including additional lanes for future traffic signs based on traffic projected and land development approvals.

### Segment 3 General Notes:

- Access Management Plan (AMP) identifies significant concerns from the County Access Management Plan. As a condition of the highway and MTCF (representative) there is to be considered for future expansion including additional lanes for future traffic signs based on traffic projected and land development approvals.
- The SH 94 Corridor's AMP identifies significant concerns from the County Access Management Plan. As a condition of the highway and MTCF (representative) there is to be considered for future expansion including additional lanes for future traffic signs based on traffic projected and land development approvals.

### Sign Map Legend

- Uncontrolled Intersection
- Signalized Intersection
- Activity Node
- Intermodal Future Signal
- Other Symbols



# Colorado Springs and



# JLUS

- Please nominate a representative for the JLUS Implementation Policy Committee [Councilman Murray from 2015 to 2018] Time commitment: 5-6 quarterly meetings for 90 minutes each with time for meeting materials review
- First meeting July 25, 2019; 2:00 PM to 3:30 PM
- JLUS staff will reach out to City staff on various technical items to make sure we are responsive to City planning efforts and operations
- Continue to consider military operations during future city planning efforts [e.g. - airport uses; continue to accommodate

# Questions?

Pikes Peak Area Council of Governments  
Joint Land Use Study Program -  
[www.ppacg.org/military](http://www.ppacg.org/military)

Executive Summary/Full Report:  
[jlus-study-report/](#)

719-471-7080

[jlus@ppacg.org](mailto:jlus@ppacg.org)

