

PIKE VIEW

A PORTION OF TOWNSHIP 13 SOUTH, RANGE 67 WEST OF THE SIXTH PRINCIPAL MERIDIAN CITY OF COLORADO SPRINGS, COLORADO

ZONE CHANGE - EXHIBIT B



LINE	BEARING	DISTANCE
1 (1)	N84°06'49.2"E	64.42'
2 (1)	N84°59'44.4"E	47.62'
3 (2)	S85°09'54.4"E	55.19'
4 (2)	S84°59'54.4"E	45.76'
5 (2)	S84°59'54.4"E	48.77'
6 (2)	N85°19'51.1"E	11.28'
7 (2)	N84°06'49.2"E	64.42'
8 (1)	N84°06'49.2"E	39.42'
9 (1)	N85°24'38.8"E	130.98'
10 (1)	N85°24'38.8"E	130.98'
11 (1)	S90°06'35.5"W	171.90'
12 (1)	S90°06'35.5"W	171.90'

LINE	BEARING	DISTANCE
1 (1)	N84°06'49.2"E	64.42'
2 (1)	N84°59'44.4"E	47.62'
3 (2)	S85°09'54.4"E	55.19'
4 (2)	S84°59'54.4"E	45.76'
5 (2)	S84°59'54.4"E	48.77'
6 (2)	N85°19'51.1"E	11.28'
7 (2)	N84°06'49.2"E	64.42'
8 (1)	N84°06'49.2"E	39.42'
9 (1)	N85°24'38.8"E	130.98'
10 (1)	N85°24'38.8"E	130.98'
11 (1)	S90°06'35.5"W	171.90'
12 (1)	S90°06'35.5"W	171.90'

LINE	BEARING	DISTANCE	CHECKS	REMARKS
1 (1)	N84°06'49.2"E	64.42'	520.11	137.7'
2 (1)	N84°59'44.4"E	47.62'	520.11	137.7'
3 (2)	S85°09'54.4"E	55.19'	520.11	137.7'
4 (2)	S84°59'54.4"E	45.76'	520.11	137.7'
5 (2)	S84°59'54.4"E	48.77'	520.11	137.7'
6 (2)	N85°19'51.1"E	11.28'	520.11	137.7'
7 (2)	N84°06'49.2"E	64.42'	520.11	137.7'
8 (1)	N84°06'49.2"E	39.42'	520.11	137.7'
9 (1)	N85°24'38.8"E	130.98'	520.11	137.7'
10 (1)	N85°24'38.8"E	130.98'	520.11	137.7'
11 (1)	S90°06'35.5"W	171.90'	520.11	137.7'
12 (1)	S90°06'35.5"W	171.90'	520.11	137.7'

LINE	BEARING	DISTANCE	CHECKS	REMARKS
1 (1)	N84°06'49.2"E	64.42'	520.11	137.7'
2 (1)	N84°59'44.4"E	47.62'	520.11	137.7'
3 (2)	S85°09'54.4"E	55.19'	520.11	137.7'
4 (2)	S84°59'54.4"E	45.76'	520.11	137.7'
5 (2)	S84°59'54.4"E	48.77'	520.11	137.7'
6 (2)	N85°19'51.1"E	11.28'	520.11	137.7'
7 (2)	N84°06'49.2"E	64.42'	520.11	137.7'
8 (1)	N84°06'49.2"E	39.42'	520.11	137.7'
9 (1)	N85°24'38.8"E	130.98'	520.11	137.7'
10 (1)	N85°24'38.8"E	130.98'	520.11	137.7'
11 (1)	S90°06'35.5"W	171.90'	520.11	137.7'
12 (1)	S90°06'35.5"W	171.90'	520.11	137.7'

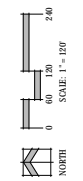
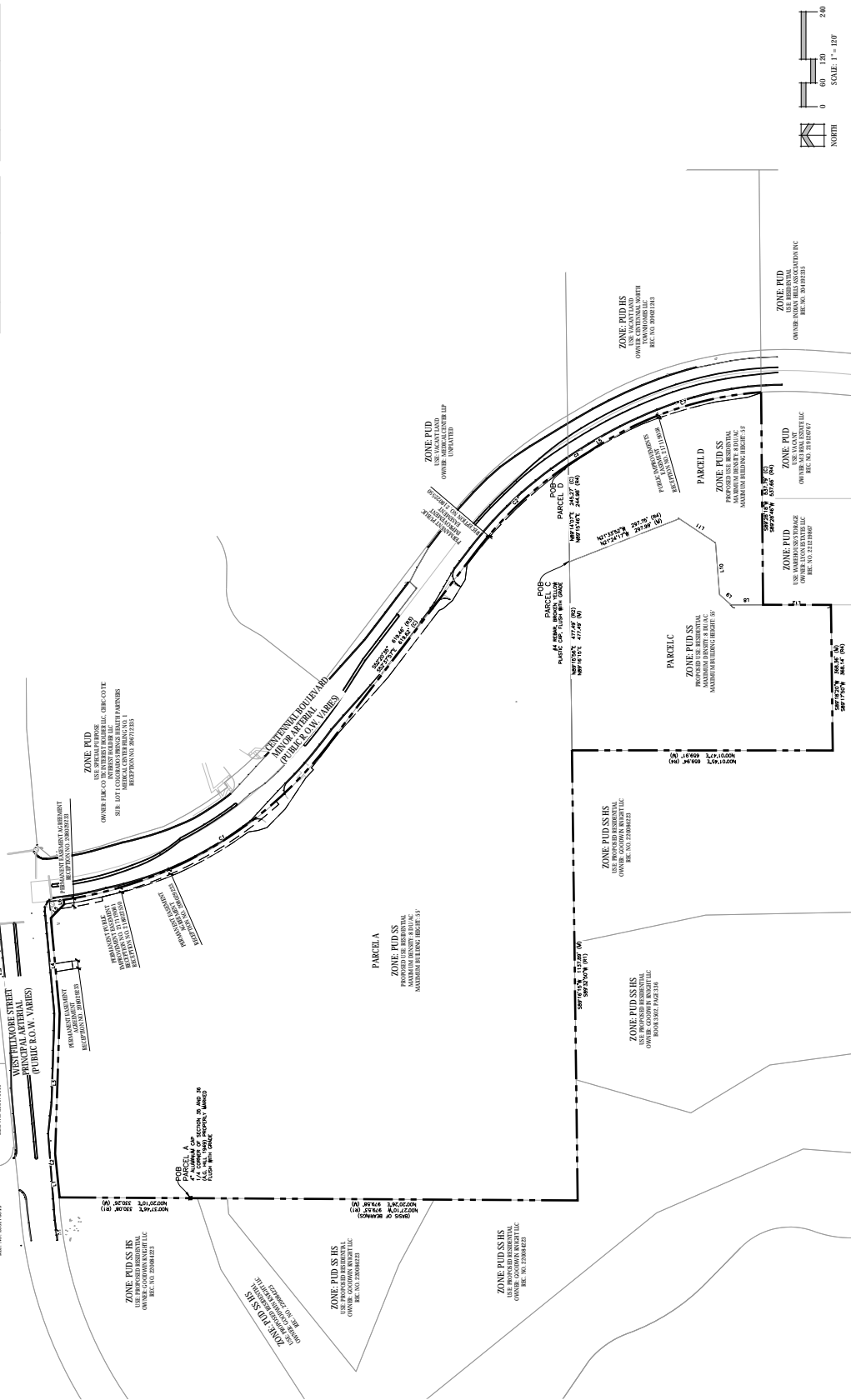
LINE	BEARING	DISTANCE	CHECKS	REMARKS
1 (1)	N84°06'49.2"E	64.42'	520.11	137.7'
2 (1)	N84°59'44.4"E	47.62'	520.11	137.7'
3 (2)	S85°09'54.4"E	55.19'	520.11	137.7'
4 (2)	S84°59'54.4"E	45.76'	520.11	137.7'
5 (2)	S84°59'54.4"E	48.77'	520.11	137.7'
6 (2)	N85°19'51.1"E	11.28'	520.11	137.7'
7 (2)	N84°06'49.2"E	64.42'	520.11	137.7'
8 (1)	N84°06'49.2"E	39.42'	520.11	137.7'
9 (1)	N85°24'38.8"E	130.98'	520.11	137.7'
10 (1)	N85°24'38.8"E	130.98'	520.11	137.7'
11 (1)	S90°06'35.5"W	171.90'	520.11	137.7'
12 (1)	S90°06'35.5"W	171.90'	520.11	137.7'

LINE	BEARING	DISTANCE	CHECKS	REMARKS
1 (1)	N84°06'49.2"E	64.42'	520.11	137.7'
2 (1)	N84°59'44.4"E	47.62'	520.11	137.7'
3 (2)	S85°09'54.4"E	55.19'	520.11	137.7'
4 (2)	S84°59'54.4"E	45.76'	520.11	137.7'
5 (2)	S84°59'54.4"E	48.77'	520.11	137.7'
6 (2)	N85°19'51.1"E	11.28'	520.11	137.7'
7 (2)	N84°06'49.2"E	64.42'	520.11	137.7'
8 (1)	N84°06'49.2"E	39.42'	520.11	137.7'
9 (1)	N85°24'38.8"E	130.98'	520.11	137.7'
10 (1)	N85°24'38.8"E	130.98'	520.11	137.7'
11 (1)	S90°06'35.5"W	171.90'	520.11	137.7'
12 (1)	S90°06'35.5"W	171.90'	520.11	137.7'

LINE	BEARING	DISTANCE	CHECKS	REMARKS
1 (1)	N84°06'49.2"E	64.42'	520.11	137.7'
2 (1)	N84°59'44.4"E	47.62'	520.11	137.7'
3 (2)	S85°09'54.4"E	55.19'	520.11	137.7'
4 (2)	S84°59'54.4"E	45.76'	520.11	137.7'
5 (2)	S84°59'54.4"E	48.77'	520.11	137.7'
6 (2)	N85°19'51.1"E	11.28'	520.11	137.7'
7 (2)	N84°06'49.2"E	64.42'	520.11	137.7'
8 (1)	N84°06'49.2"E	39.42'	520.11	137.7'
9 (1)	N85°24'38.8"E	130.98'	520.11	137.7'
10 (1)	N85°24'38.8"E	130.98'	520.11	137.7'
11 (1)	S90°06'35.5"W	171.90'	520.11	137.7'
12 (1)	S90°06'35.5"W	171.90'	520.11	137.7'

LINE	BEARING	DISTANCE	CHECKS	REMARKS
1 (1)	N84°06'49.2"E	64.42'	520.11	137.7'
2 (1)	N84°59'44.4"E	47.62'	520.11	137.7'
3 (2)	S85°09'54.4"E	55.19'	520.11	137.7'
4 (2)	S84°59'54.4"E	45.76'	520.11	137.7'
5 (2)	S84°59'54.4"E	48.77'	520.11	137.7'
6 (2)	N85°19'51.1"E	11.28'	520.11	137.7'
7 (2)	N84°06'49.2"E	64.42'	520.11	137.7'
8 (1)	N84°06'49.2"E	39.42'	520.11	137.7'
9 (1)	N85°24'38.8"E	130.98'	520.11	137.7'
10 (1)	N85°24'38.8"E	130.98'	520.11	137.7'
11 (1)	S90°06'35.5"W	171.90'	520.11	137.7'
12 (1)	S90°06'35.5"W	171.90'	520.11	137.7'

LINE	BEARING	DISTANCE	CHECKS	REMARKS
1 (1)	N84°06'49.2"E	64.42'	520.11	137.7'
2 (1)	N84°59'44.4"E	47.62'	520.11	137.7'
3 (2)	S85°09'54.4"E	55.19'	520.11	137.7'
4 (2)	S84°59'54.4"E	45.76'	520.11	137.7'
5 (2)	S84°59'54.4"E	48.77'	520.11	137.7'
6 (2)	N85°19'51.1"E	11.28'	520.11	137.7'
7 (2)	N84°06'49.2"E	64.42'	520.11	137.7'
8 (1)	N84°06'49.2"E	39.42'	520.11	137.7'
9 (1)	N85°24'38.8"E	130.98'	520.11	137.7'
10 (1)	N85°24'38.8"E	130.98'	520.11	137.7'
11 (1)	S90°06'35.5"W	171.90'	520.11	137.7'
12 (1)	S90°06'35.5"W	171.90'	520.11	137.7'



DATE: 03.28.22
 DRAWN BY: [Name]
 CHECKED BY: [Name]
 PREPARED BY: [Name]

ENTITLEMENT
 SHEET NUMBER: 5 OF 5
 PROJECT NUMBER: [Number]
 CITY: COLORADO SPRINGS
 COUNTY: EL PASO
 ZONE CHANGE EXHIBIT B
 5 OF 5
 CPC RIZ-22-00052

EXHIBIT B - Zone Change Depiction