

CORDERA COMMERCIAL SOUTH CITY OF COLORADO SPRINGS EXHIBIT "B" ZONE CHANGE EXHIBIT PARCEL C

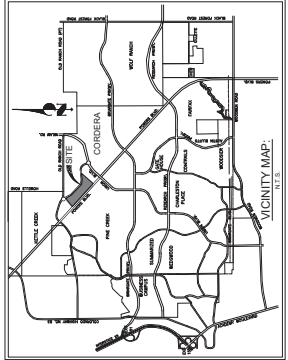
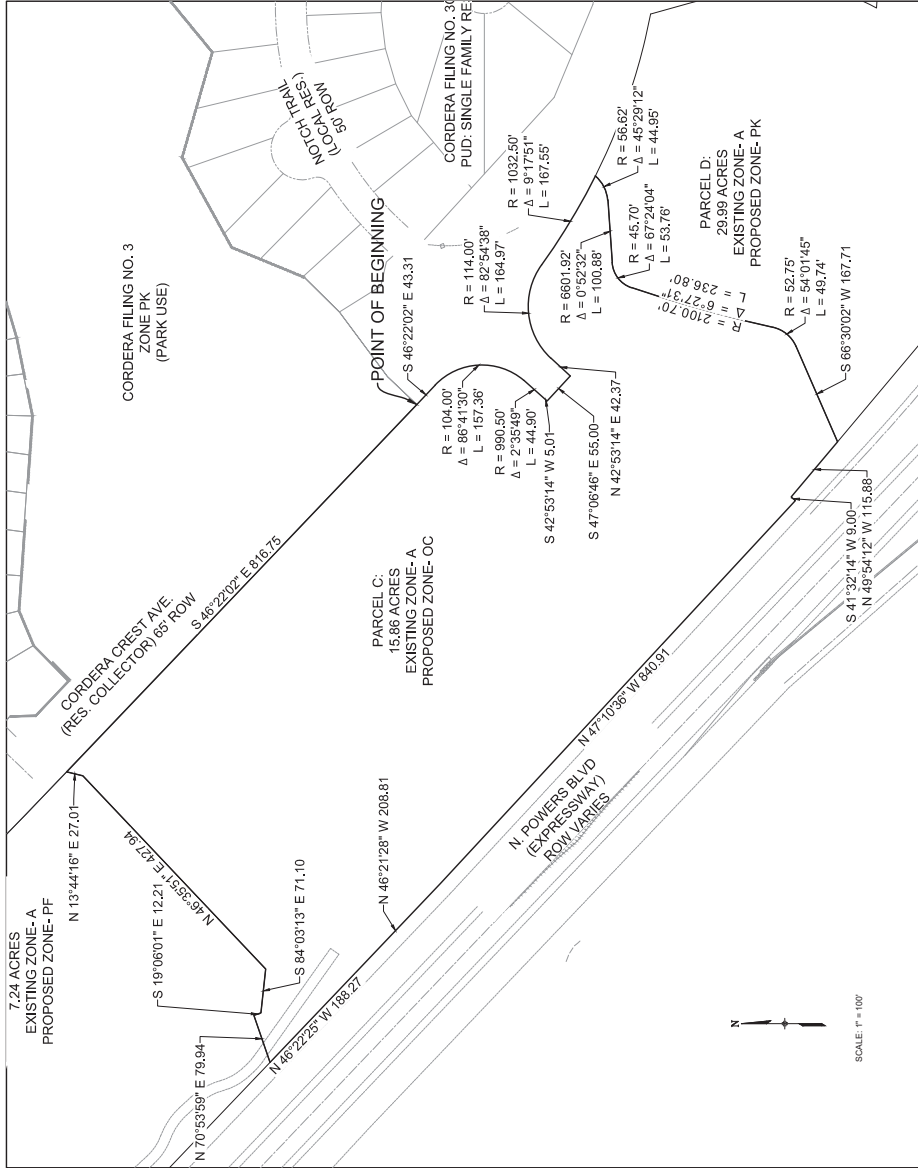



EXHIBIT B

CPC ZC 19-00072

 <small>PLANNER/CIVIL ENGINEER</small> Matrix <small>DESIGN GROUP</small>	<small>CONSULTANT</small> 2435 Research Parkway, Suite 300 Colorado Springs, CO 80920 Phone: 719-575-5100 Fax: 719-575-5208	<small>PROJECT:</small> CORDERA COMMERCIAL SOUTH ZONE CHANGE CITY OF COLORADO SPRINGS AUGUST 21, 2019	<small>OWNER:</small> HIGH VALLEY LAND CO, INC. 1755 TELSTAR DRIVE, SUITE 211 COLORADO SPRINGS, COLORADO 80920 (719) 260-7417		
<small>ISSUE:</small> AUGUST 21, 2019					
<small>DRAWING INFORMATION:</small> PROJECT NO: 19-00072 DRAWN BY: JASON ALVINE CHECKED BY: GREG SHANER APPROVED BY: GREG SHANER SHEET TITLE:					
<h2 style="margin: 0;">ZONE CHANGE</h2>					
<small>CITY PLANNING FILE NO:</small>					
SHEET 3 OF 3					