

August 2019 Financial Update

(activity thru June 2019)

August 12, 2019

Charae McDaniel

Chief Financial Officer



General Revenue Information



Property Taxes are collected mainly in March-July. 98% of the total revenue is typically collected by the end of July.

Charges for services include court costs, development review fees, excess police alarm fees, hazardous material fees, youth and adult recreation programs, and community center classes. This category includes revenue which is not smooth throughout the year or received in the same months year to year. Also, program managers monitor program revenues and monitor and adjust expenditures accordingly.

Fines are collected for violations including parking and traffic violations.

Intergovernmental includes HUTF, state cigarette tax, and road and bridge revenue. HUTF is collected by the state and distributed locally throughout the year, although collections are typically slightly higher in the last half of the year – sources include motor fuel taxes and vehicle registration fees. Cigarette tax is lagged such that no revenue is collected January or February, but December has three months of collections booked.

Licenses and Permits includes revenue collected throughout the City for the issuance and renewal of business licenses, as well as permits pertaining to activity conducted within the City's limits.

Other Taxes includes specific ownership tax, admissions tax, and occupational liquor taxes. Specific ownership tax is the state automobile tax and is collected throughout the year; however, there are no collections booked for January and two months of collections are booked in December.

Miscellaneous Revenue includes shared services, utilities surplus revenue, and sale of capital assets. Shared services revenue is collected from enterprises for services provided by General Fund employees such as the City Attorney, City Auditor, and the City Clerk. Some of the charges are determined through a cost allocation model and the revenue received is smooth throughout the year, other charges are billed as services are provided and can vary greatly by month each year. Beginning in 2014, fuel for the City and Colorado Springs Utilities was purchased by the General Fund. Colorado Springs Utilities reimburses the General Fund for its fuel usage, which results in a much higher shared services amount. Utilities surplus revenue is collected throughout the year; however, no revenue is booked in January and two months of revenue are booked in December.

2019 General Fund Revenue



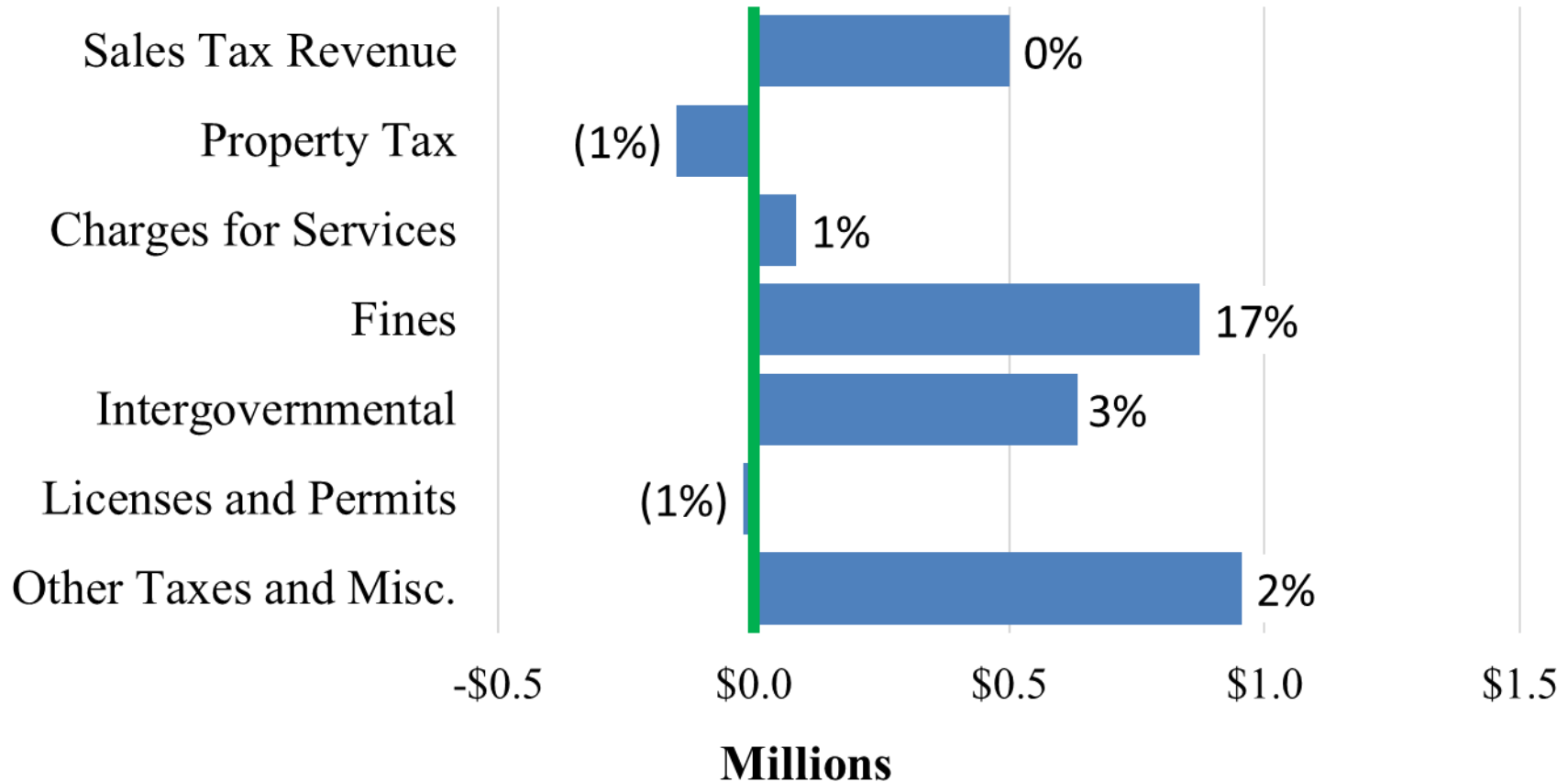
EOY Revenue

(activity thru June 2019)

(Under)

Budget

Above



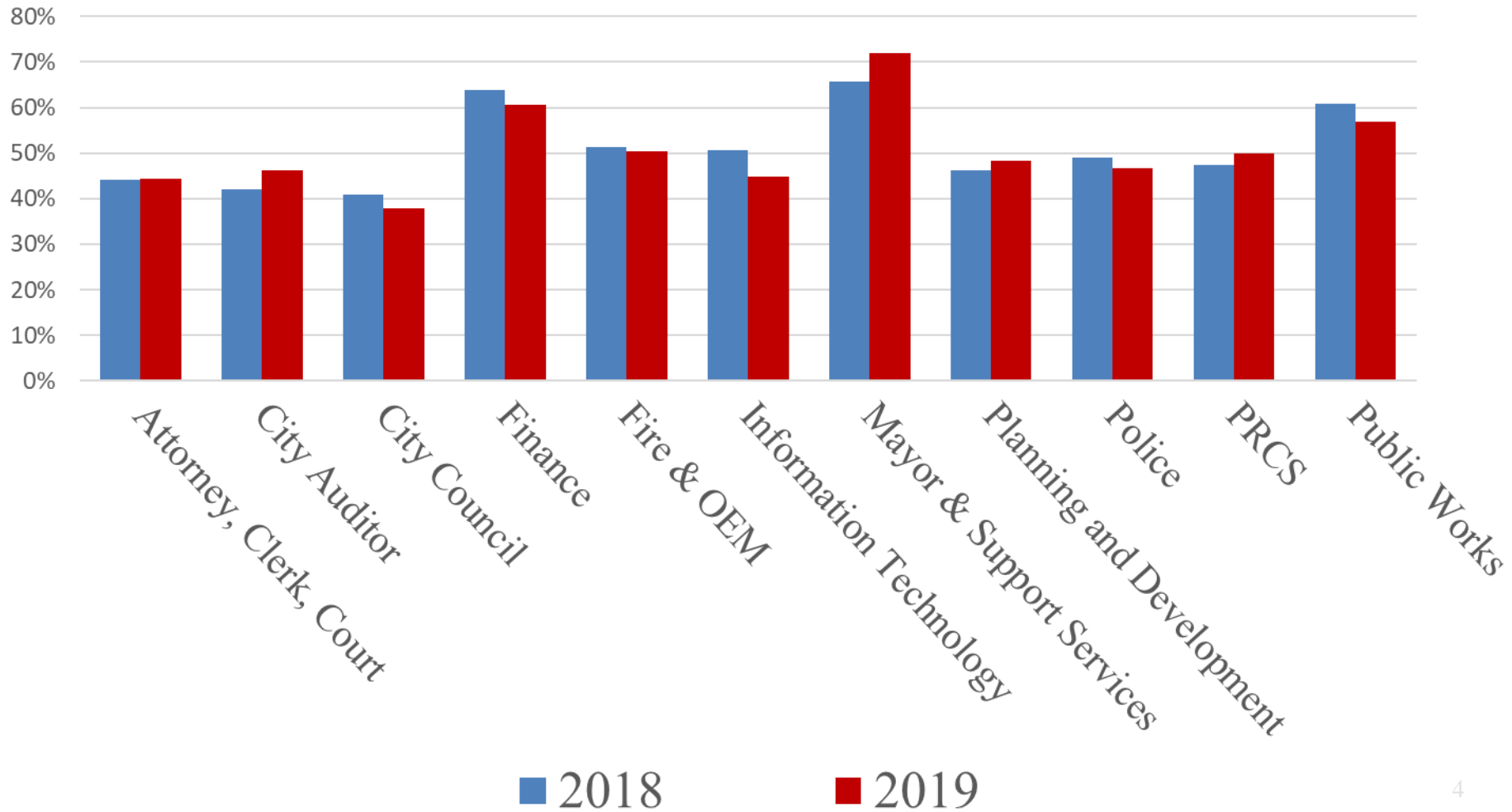
Summary – total GF revenue \$2.9M, or 1%, above budget

2019 General Fund Expenditures



(activity thru June 2019)

YTD Comparison of Actuals as % of Budget



Sales Tax Trends



(collections thru June 2019)

2.0% Sales and Use Tax:

- S&U combined – down 1.44% for the month and up 4.07% year-to-date
 - Sales tax – down 0.75% for the month and up 4.65% year-to-date
 - Use tax – down 16.51% for the month and down 5.81% year-to-date

2.0% Lodger's Tax & 1.0% Auto Rental Tax:

- LART Combined – up 7.03% for the month and up 11.00% year-to-date
 - Lodger's Tax – up 6.57% for the month and up 9.84% year-to-date
 - Auto Rental Tax – up 13.98% for the month and up 24.35% year-to-date

0.62% Road Tax:

- 2C Road Tax – down 1.44% for the month and up 4.08% year-to-date

Sales Tax Trends



(collections thru June 2019)

Industries with Largest Month over Month % Increase

Medical Marijuana	19.17%
Auto Repair and Leases	11.63%
Business Services	10.80%

Industries with Largest Month over Month \$ Increase

Restaurants	\$141,615
Auto Repair and Leases	\$66,005
Grocery Stores	\$45,199

Industries with Largest Month over Month % Decrease

Commercial Machines	(37.29%)
Miscellaneous Retail	(16.97%)
Auto Dealers	(6.89%)

Industries with Largest Month over Month \$ Decrease

Miscellaneous Retail	(\$311,142)
Commercial Machines	(\$126,522)
Auto Dealers	(\$85,241)

Sales Tax Trends



(collections thru June 2019)

Category	\$ Change 2019 YTD compared to 2018 YTD	% Change 2019 YTD compared to 2018 YTD
Auto Dealers	201,128	3.5%
Auto Repair, Leases	361,442	12.9%
Building Materials	534,493	7.3%
Business Services *	433,977	26.6%
Clothing	53,442	2.2%
Commercial Machines *	(174,584)	(11.2%)
Department/Discount	29,892	0.6%
Furniture/Appliances/Electronics	78,208	2.3%
Grocery	305,187	10.6%
Hotel/Motel	202,044	6.9%
Medical Marijuana	(9,229)	(1.2%)
Miscellaneous Retail	(488,826)	(6.2%)
Restaurants	500,592	5.7%
Utilities	111,742	7.5%

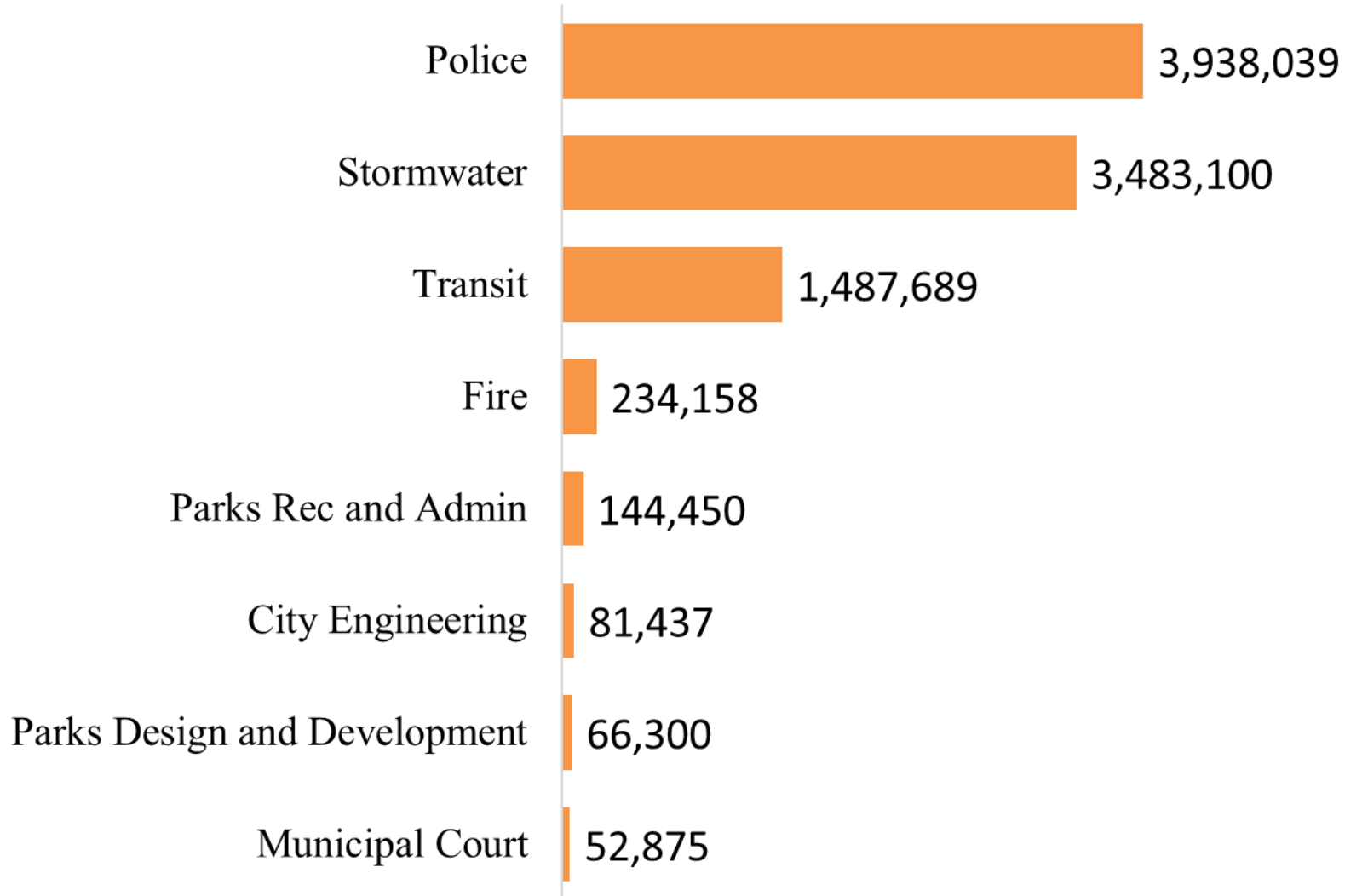
*The most volatile categories

2019 Grant Funds Update



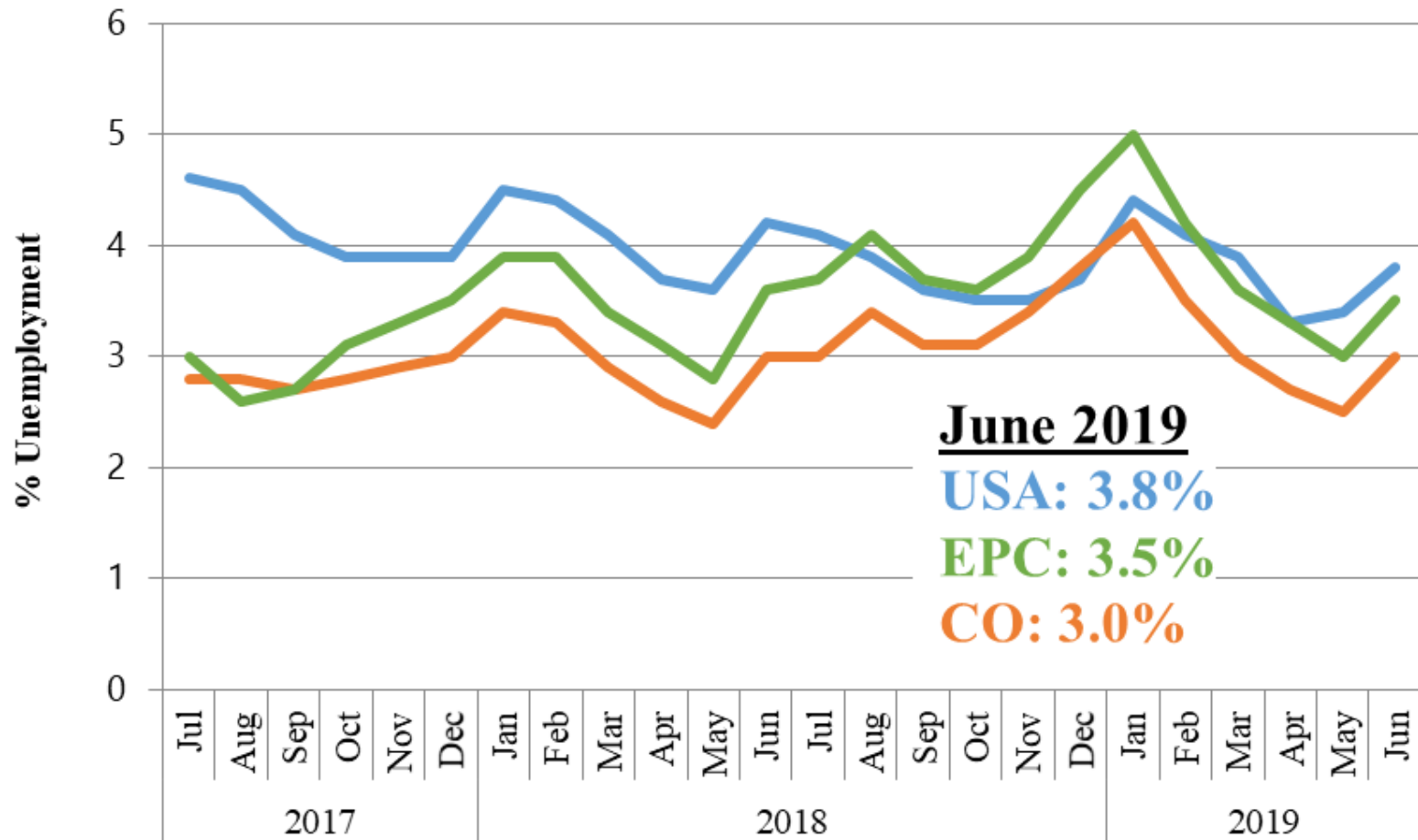
2019 Awarded Grants

(activity thru June 2019)



(activity thru June 2019)

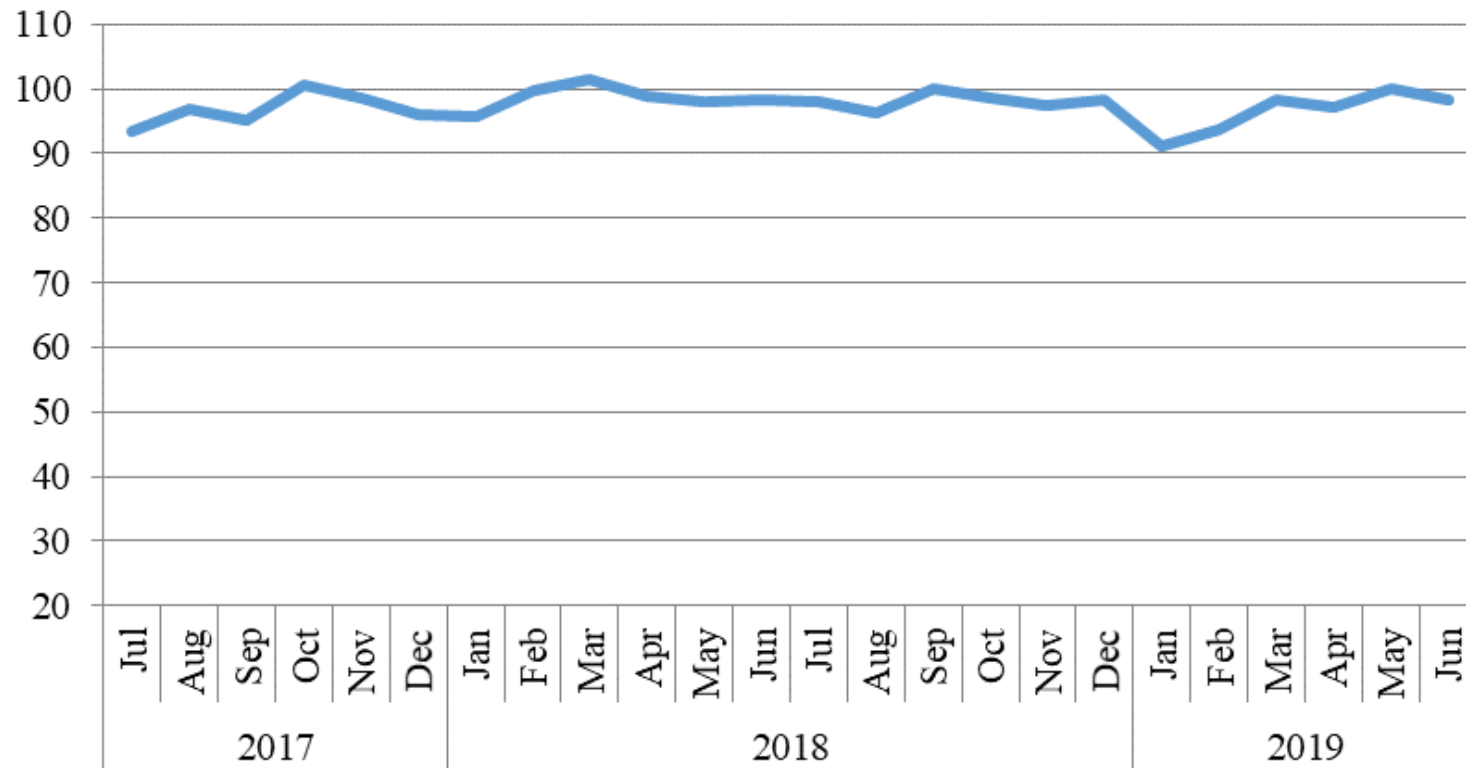
Unemployment Rate



(activity thru June 2019)



Index of Consumer Sentiment



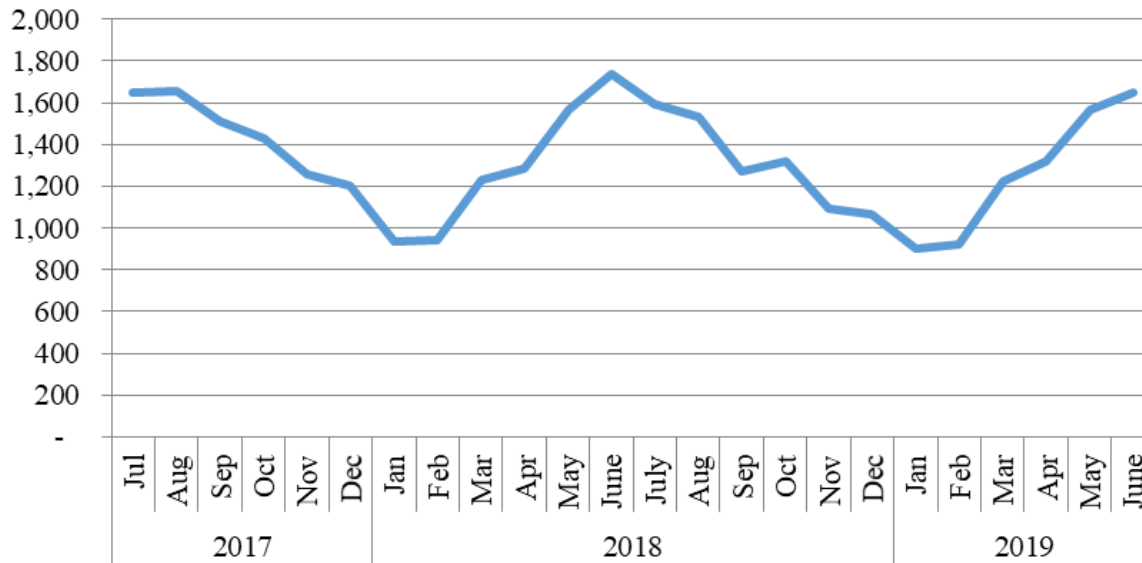
Economic Indicators



(activity thru June 2019)



Pikes Peak Region Home Sales Single Family/Patio Homes



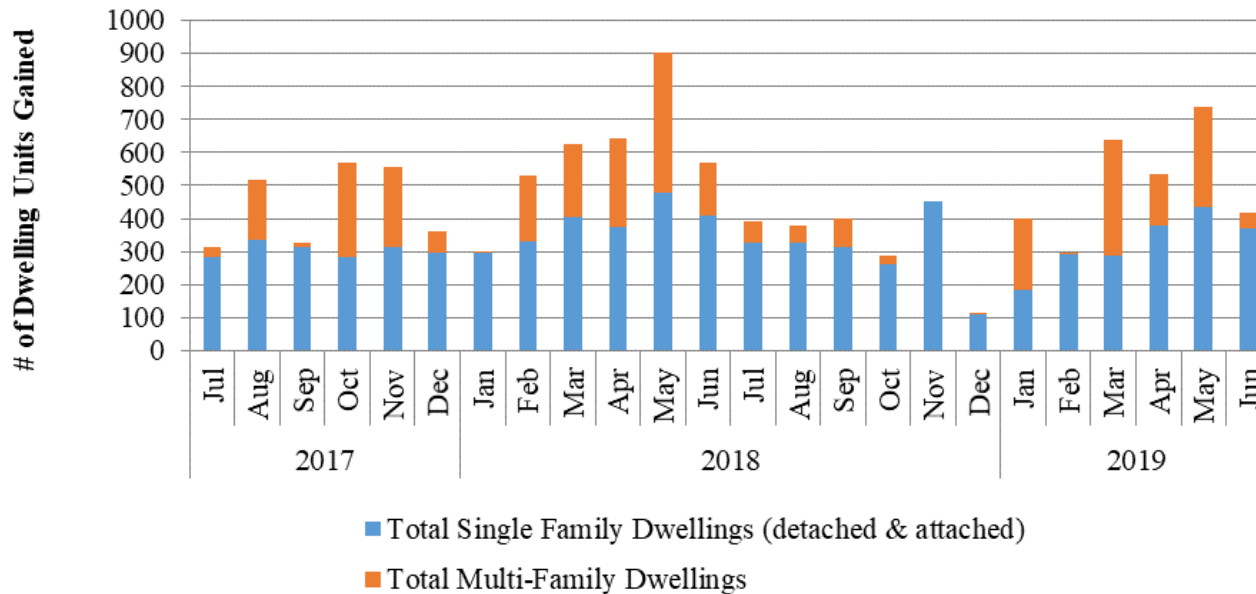
YTD Sales 2019	YTD Sales 2018	% Change
7,584	7,706	(1.6)

Category	Avg. Sales Price June 2019	Avg. Sales Price June 2018	% Change
Single Family/Patio Homes	\$373,792	\$361,499	3.4
Condo/Townhomes	\$248,816	\$230,142	8.1

(activity thru June 2019)



Pikes Peak Region Residential Building Permits

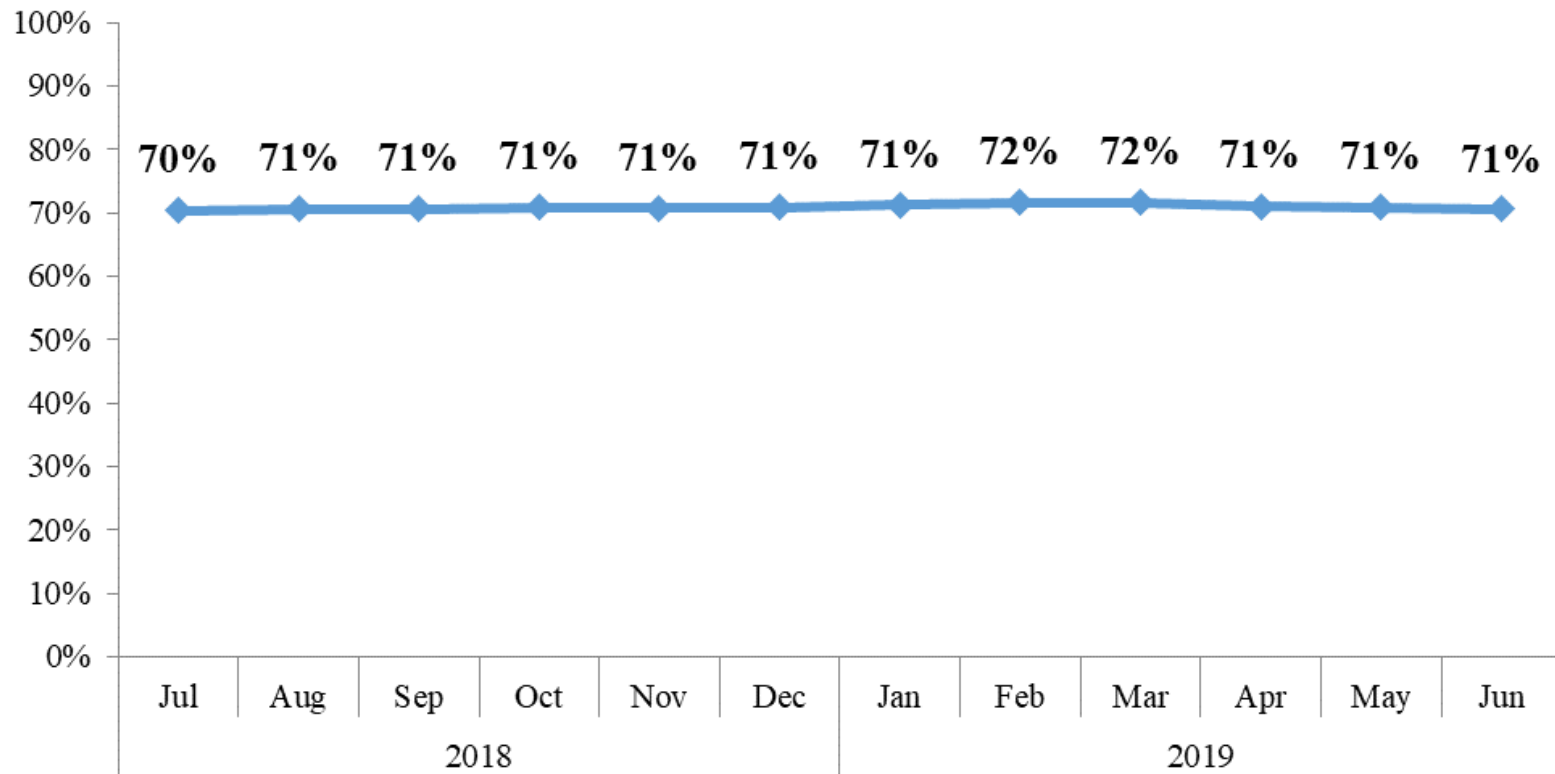


YTD Permit Activity	2019	2018	% Change
Single Family Dwelling Units	1,946	2,291	(15.0)
Multi-Family Dwelling Units	1,081	1,273	(15.0)

(activity thru June 2019)



Colorado Springs Hotel Occupancy Rate (12 Month Moving Average)



Questions?