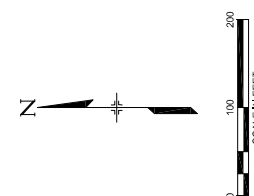
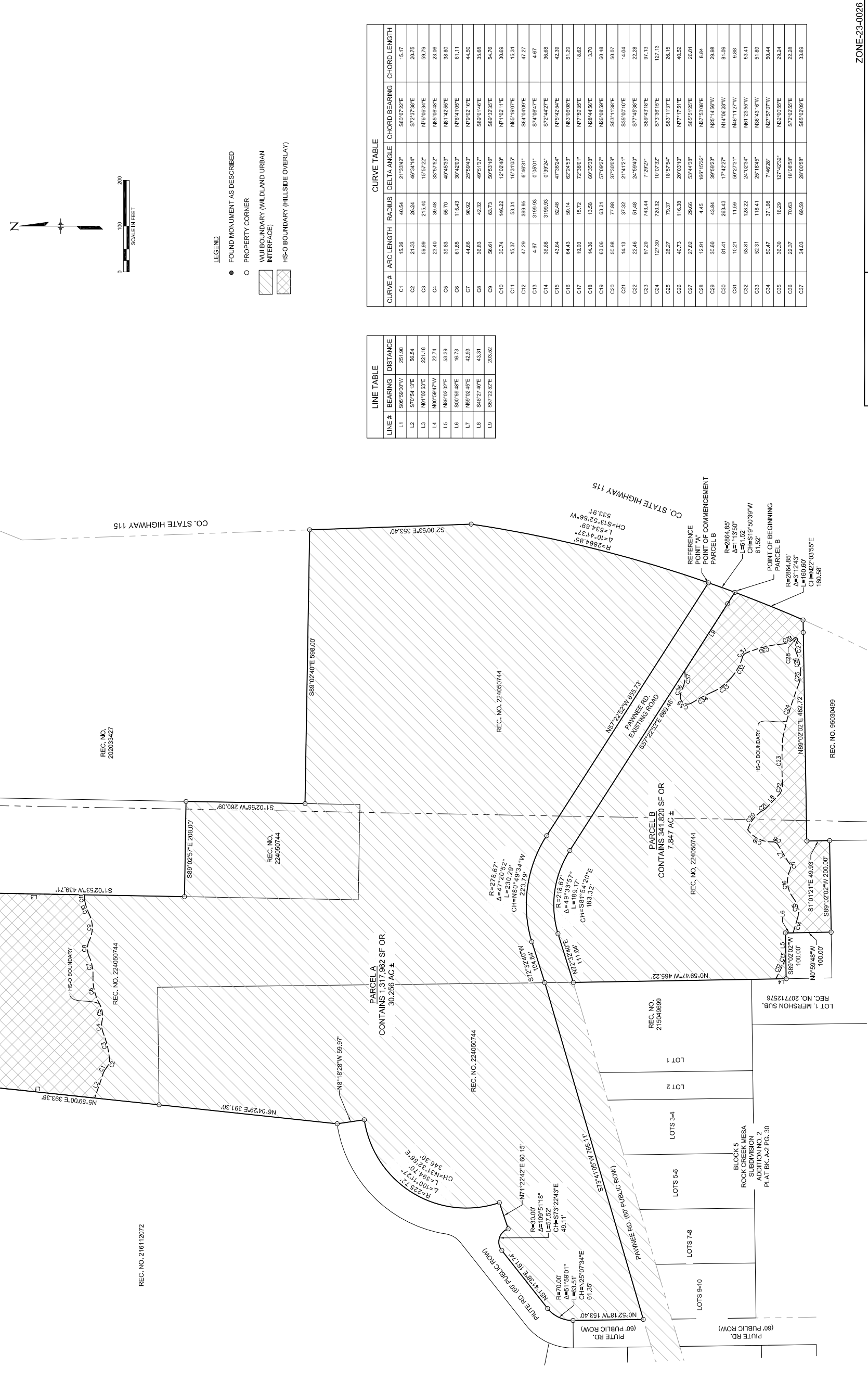


W 1/4 COR. SEC. 30 T.15S. R.66W
2" PIPE W/ 3.25" BRASS CAP

N. LINE SW 1/4 SEC. 30
(BASIS OF BEARINGS - S88°02'51"E 2557.81')



- LEGEND**
- FOUND MONUMENT AS DESCRIBED
 - PROPERTY CORNER
 - ▨ WUI BOUNDARY (WILDLAND URBAN INTERFACE)
 - ▩ HS-O BOUNDARY (HILLSIDE OVERLAY)

LINE TABLE

| LINE # | BEARING | DISTANCE |
|--------|-------------|----------|
| L1 | S05°09'00"W | 251.90 |
| L2 | S70°54'13"E | 66.54 |
| L3 | N01°02'53"E | 271.18 |
| L4 | N00°39'47"W | 22.74 |
| L5 | N89°02'02"E | 53.39 |
| L6 | S00°59'49"E | 16.73 |
| L7 | N89°02'02"E | 42.93 |
| L8 | S46°27'40"E | 43.31 |
| L9 | S67°22'52"E | 203.52 |

CURVE TABLE

| CURVE # | ARC LENGTH | RADIUS | DELTA ANGLE | CHORD BEARING | CHORD LENGTH |
|---------|------------|---------|-------------|---------------|--------------|
| C1 | 15.26 | 40.54 | 21°33'42" | S80°07'22"E | 15.17 |
| C2 | 21.33 | 26.24 | 46°34'44" | S73°37'38"E | 20.75 |
| C3 | 59.99 | 216.60 | 5°57'22" | N76°06'54"E | 59.79 |
| C4 | 23.40 | 36.48 | 33°57'52" | N85°06'48"E | 23.06 |
| C5 | 39.63 | 55.70 | 40°45'38" | N81°42'55"E | 38.80 |
| C6 | 61.85 | 115.43 | 30°42'00" | N76°41'05"E | 61.11 |
| C7 | 44.88 | 98.92 | 25°59'40" | N79°02'06"E | 44.59 |
| C8 | 36.83 | 42.32 | 49°51'37" | S89°01'46"E | 35.68 |
| C9 | 56.61 | 63.73 | 50°53'16" | S89°32'35"E | 54.76 |
| C10 | 30.74 | 146.22 | 12°02'48" | N71°02'11"E | 30.69 |
| C11 | 15.37 | 53.31 | 16°31'05" | N65°19'07"E | 15.31 |
| C12 | 47.29 | 399.95 | 6°49'31" | S84°04'09"E | 47.27 |
| C13 | 4.67 | 3199.93 | 0°03'01" | S74°06'47"E | 4.67 |
| C14 | 36.68 | 3199.93 | 0°39'24" | S72°44'27"E | 36.68 |
| C15 | 43.64 | 52.48 | 47°36'24" | N75°42'54"E | 42.39 |
| C16 | 64.43 | 58.14 | 62°24'53" | N83°06'08"E | 61.29 |
| C17 | 19.93 | 15.72 | 72°38'01" | N77°59'59"E | 18.62 |
| C18 | 14.36 | 13.66 | 69°35'38" | N28°44'56"E | 13.70 |
| C19 | 63.06 | 63.21 | 57°09'27" | N26°08'59"E | 60.48 |
| C20 | 50.88 | 77.88 | 37°30'08" | S53°11'38"E | 50.07 |
| C21 | 14.13 | 37.32 | 21°14'12" | S35°00'10"E | 14.04 |
| C22 | 22.46 | 51.46 | 24°59'40" | S77°45'38"E | 22.28 |
| C23 | 87.20 | 743.44 | 7°29'27" | S89°43'08"E | 97.13 |
| C24 | 127.30 | 720.32 | 10°07'32" | S73°36'15"E | 127.13 |
| C25 | 26.27 | 73.37 | 16°57'54" | S83°11'37"E | 26.15 |
| C26 | 40.73 | 116.38 | 20°03'10" | N77°17'51"E | 40.52 |
| C27 | 27.82 | 26.66 | 53°44'38" | S85°51'25"E | 26.81 |
| C28 | 12.91 | 4.45 | 166°15'32" | N37°53'08"E | 8.84 |
| C29 | 30.60 | 43.84 | 39°59'23" | N25°14'56"W | 28.98 |
| C30 | 81.41 | 263.43 | 17°42'27" | N14°06'28"W | 81.09 |
| C31 | 10.21 | 11.59 | 50°27'31" | N48°11'27"W | 9.88 |
| C32 | 53.81 | 138.22 | 24°02'24" | N61°23'57"W | 53.41 |
| C33 | 52.31 | 116.41 | 25°18'45" | N36°43'06"W | 51.69 |
| C34 | 50.47 | 37.18 | 7°46'28" | N27°57'07"W | 50.44 |
| C35 | 36.30 | 16.29 | 127°42'52" | N32°02'59"E | 29.24 |
| C36 | 22.37 | 70.63 | 16°08'58" | S72°02'55"E | 22.28 |
| C37 | 94.03 | 66.59 | 28°10'58" | S85°02'09"E | 33.69 |

PREPARED BY: **Matrix**
Excellence by Design

EXHIBIT B
LAND DESCRIPTION

DATE ISSUED: AUGUST 27, 2024
SCALE: 1" = 100'
DRAWN BY: JHS
CHECKED BY: JRB
SHEET: 4 OF 4

ZONE-23-0026