

Platte Ave.

A **ConnectCOS** Community Corridor

Presenter:

Lyle DeVries
Felsburg Holt & Ullevig

City Council Work Session

February 27, 2023



Study Process



- Integrated Planning Process consistent with PlanCOS and ConnectCOS
- Technical Analysis
- Community Engagement

Purpose of the Study

- Define a Platte Avenue Corridor Improvement Plan
 - Operation and capacity improvements for Platte Avenue Corridor between Downtown and SH 21 (Powers Boulevard)
 - Connection improvements between Platte Avenue and I-25
 - Define improvement needs and desires
 - Multimodal transportation improvements
 - Level of aesthetic improvements desired
- Create a toolbox that will provide information to help the City implement improvements in the corridor



Planning Recommendations

- Flexible to address range of future occurrences
- Packaged to support phased implementation
- Prioritized to support logical sequencing



Study Timeline



2021

- Convene Study Committees. Identify needs and issues. Hold community workshops

2022

- Hold virtual Community Meeting. Develop and share initial range of alternatives at virtual Community Meeting
- Meet with individual stakeholders to discuss the options and opportunities.
- Hold open houses to present draft recommended alternative. Collaborate with mid-corridor stakeholders to broaden ideas.
- Study development. Present recommendations to City Council.

2023

- Develop draft and final report.

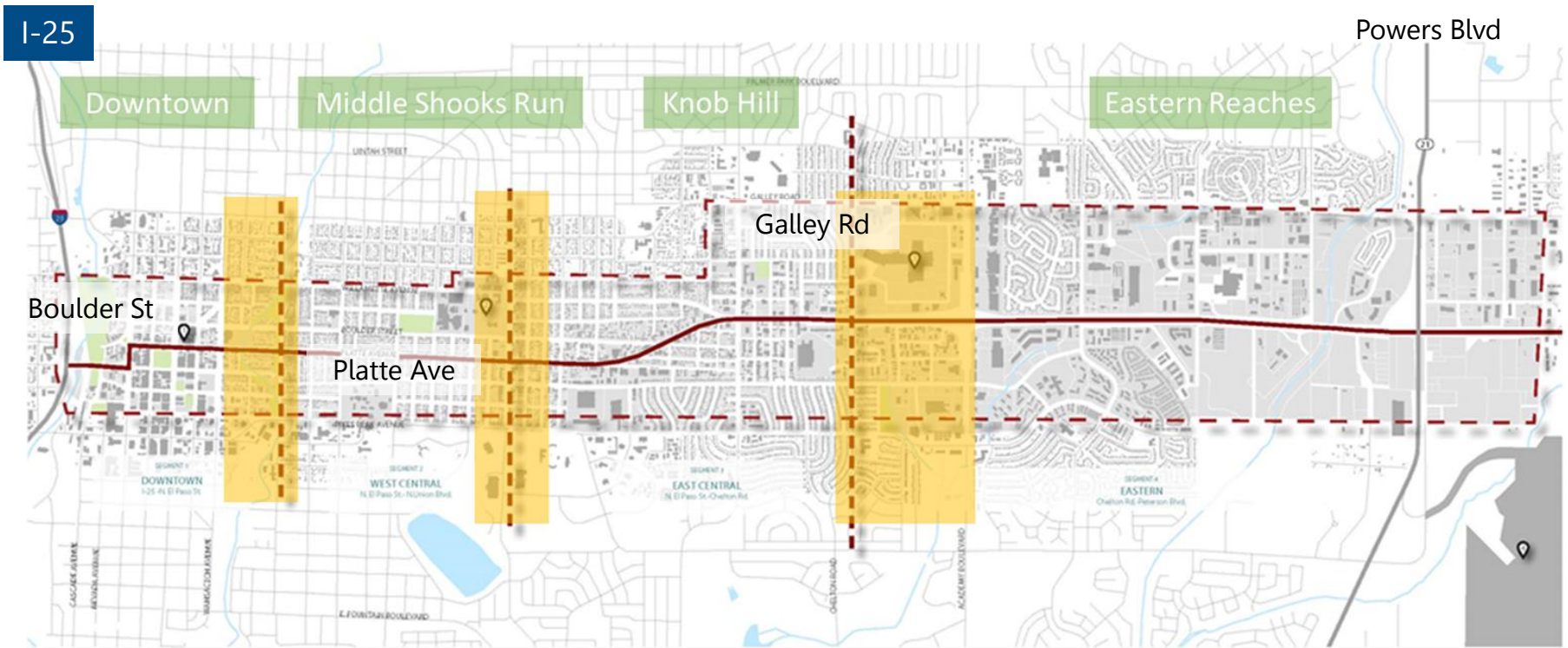
Functional Objectives



The Platte Avenue Corridor should...

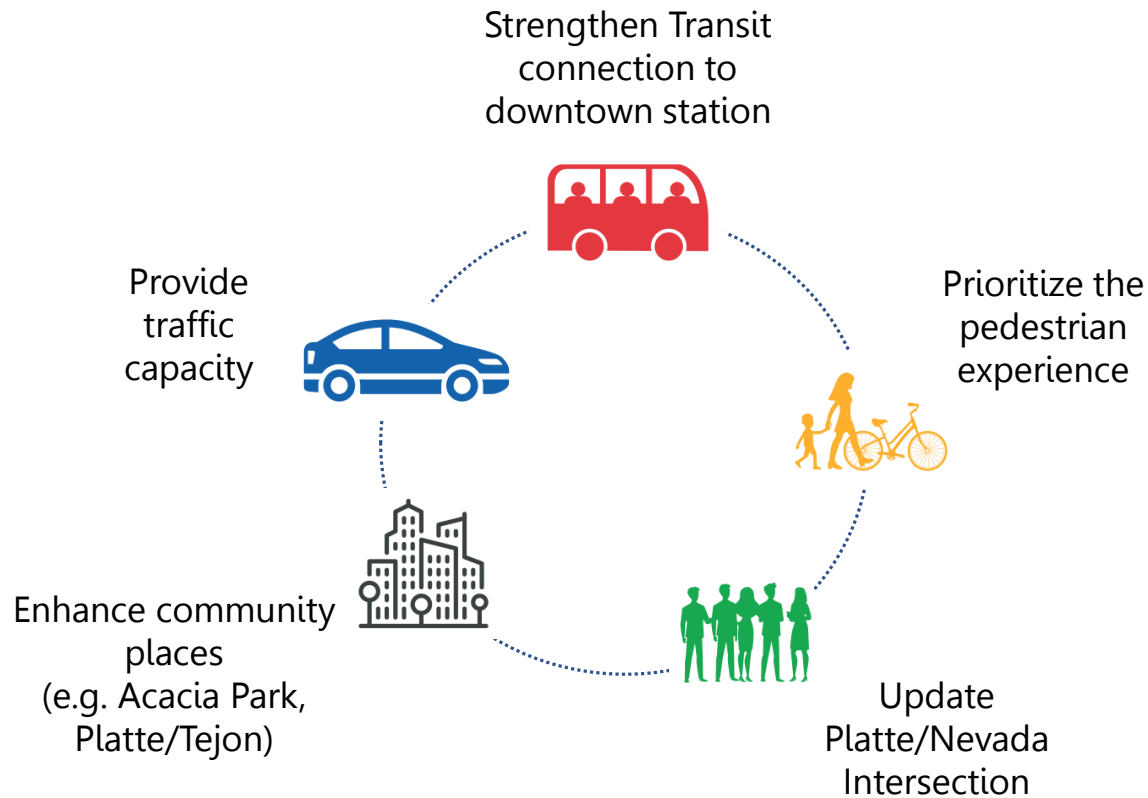
- ◆ **Maintain and enhance east-west connectivity and capacity for current and future traffic as the primary function** of the corridor, considering travel times, network connectivity, and activity centers served.
- ◆ Support **Downtown as a destination** – while connectivity between I-25 and the eastern reaches is important, the character of the Downtown portion of the corridor should prioritize the vision for Downtown
- ◆ **Establish a consistent identity** for the corridor while integrating and enhancing the different character areas and the transitions between
- ◆ **Integrate the corridor into the community** to create an 'Avenue', visual connections, and context-specific **placemaking** opportunities
- ◆ **Invest in the corridor** to support the significant opportunity presented by Platte Ave to positively impact Citywide **economic and equity outcomes**
- ◆ Provide **safe, efficient, and comfortable transportation options** along and across the corridor to enhance mobility for those who drive, ride, walk, or roll

Platte Avenue Corridor Study Area



 = Transition zones

Downtown Area Ambitions



Platte at Acacia Park Looking West Existing Condition



Platte at Acacia Park Looking West Recommended Alternative (PPRTA B: 328)

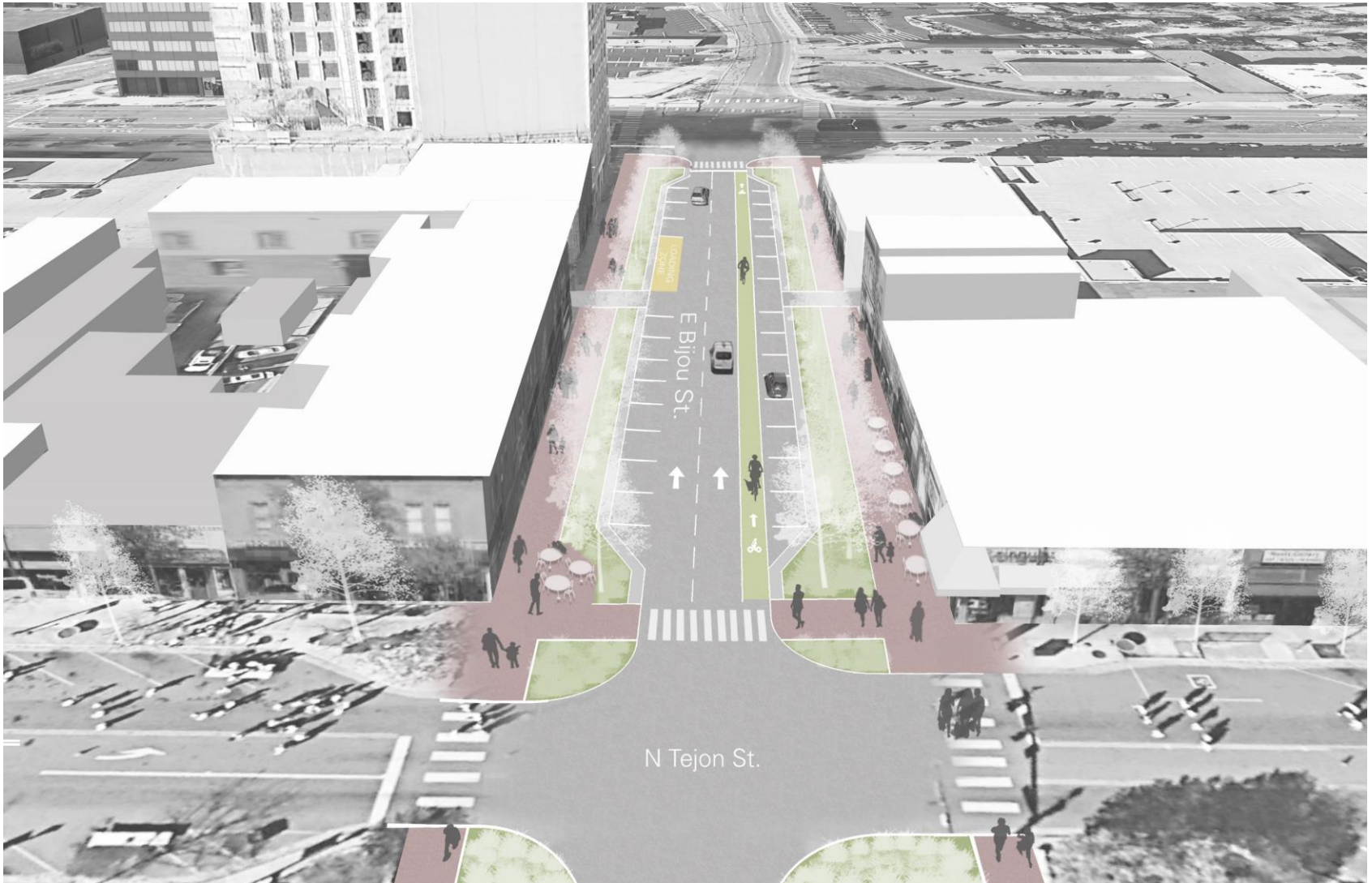


**Left Turns
Restricted at
Platte/Nevada*

Bijou St Downtown Looking West Existing Condition



Bijou St Downtown Looking West Recommended Alternative (PPRTA B: 328)



Kiowa St Downtown Looking West Existing Condition



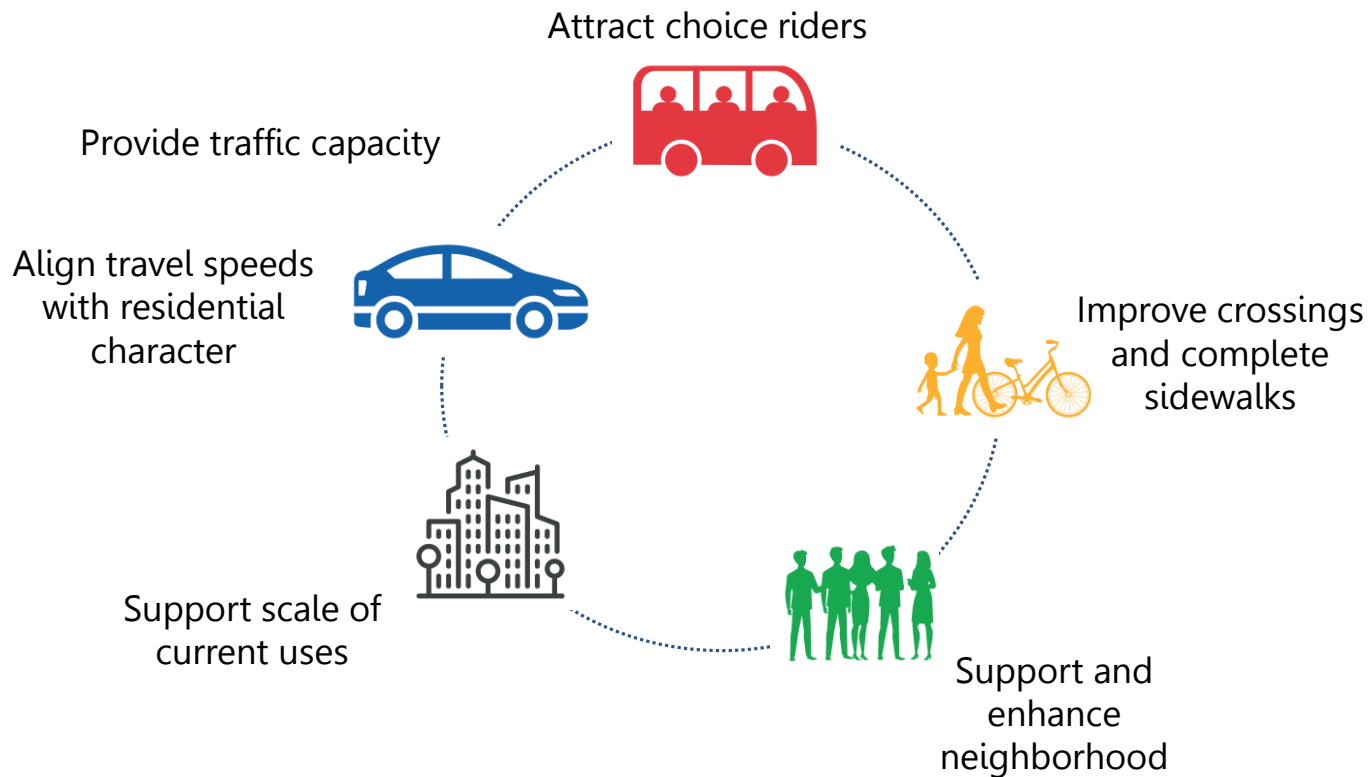
Kiowa St Downtown Looking West Recommended Alternative (PPRTA B: 328)



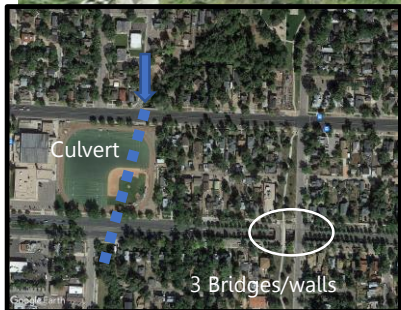
Middle Shooks Run Ambitions



Address critical infrastructure conditions



El Paso/Shooks Run Trail Looking East Existing Condition



El Paso/Shooks Run Trail Looking East Recommendation (PPRTA A: 121)



Union Boulevard Intersection Operations



CONDITION: The Union Boulevard intersections with Platte Avenue and Boulder Street require treatment in the future to maintain acceptable operations. Turn lane queuing exceeding available storage length and delay along intersection approaches are of particular concern.



Boulder St

Platte Ave

Bijou St

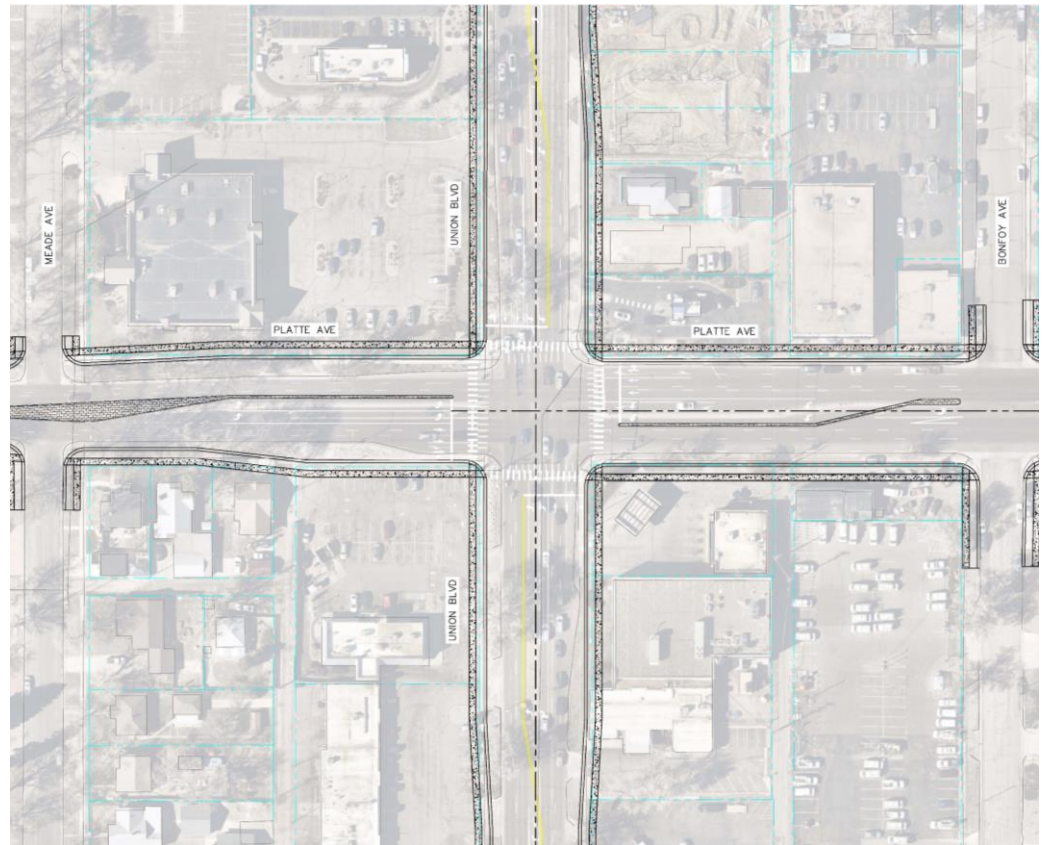
Union Boulevard Intersection Considerations



Widening

(not recommended)

- Widening to provide additional through lanes along Platte Avenue and Union Boulevard would require:
 - Definition of appropriate transition points
 - Consideration of potential property impacts and other trade-offs with study functional objectives
- Impacts include curb line adjustments, plantings, development impacts and building impacts



Union Boulevard Intersection One-Way Operations (not recommended)



Platte/Boulder One-Way Couplet (Wahsatch to Platte/Boulder split) and lane reallocation

- Dedicated transit lanes and enhanced bus stops
- Wider streetscape and enhanced pedestrian experience

Buffered bicycle lane/parking option on Boulder



Two-way cycle track on Platte

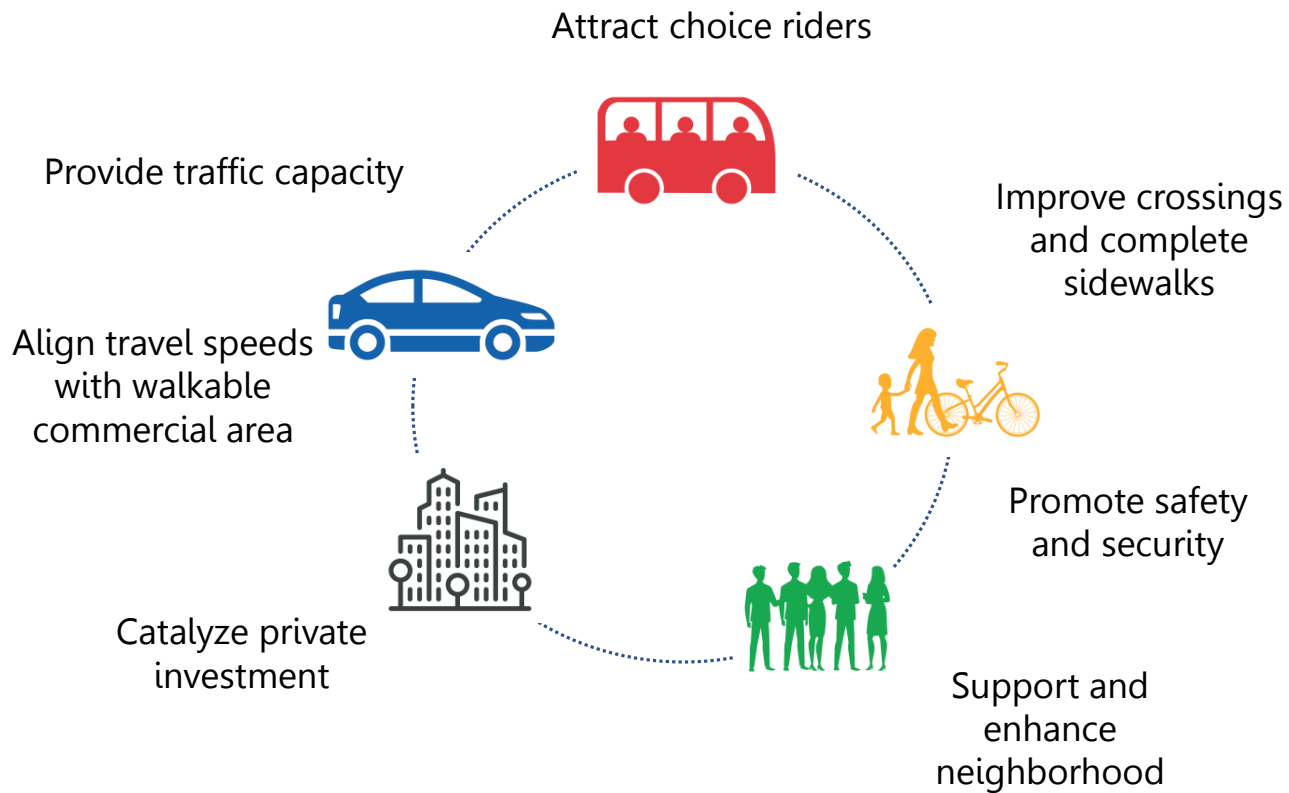
Improved north/south bike and pedestrian connections

Union Boulevard Intersection Operations Recommendations (PPRTA A: 121)



- To address congestion concerns in near term future, construct needed turn lane improvements to Platte/Union intersection
- Document history, analysis and public engagement associated with 1-way Platte Avenue/Boulder Street operations
- Invest in optimized four lane Platte Avenue to:
 - Maximize navigability for nonmotorized travel
 - Complement existing roadway context
 - Set stage for future land use opportunities
 - Provide flexibility in use of ROW

Knob Hill Ambitions



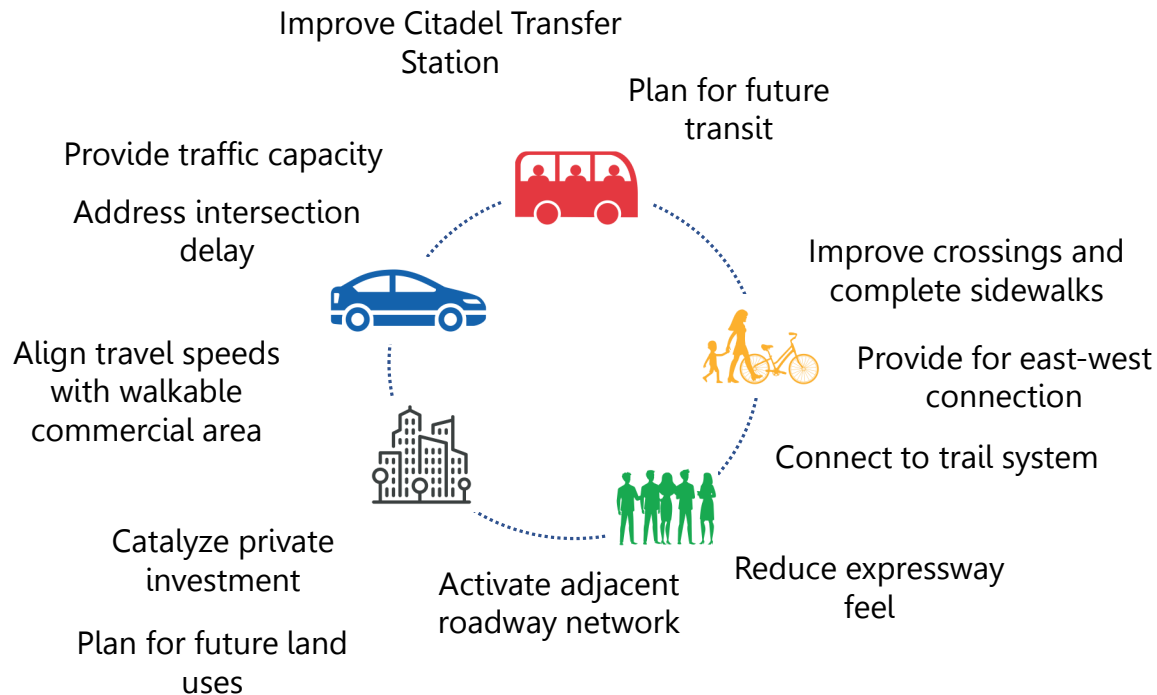
Platte Avenue in Knob Hill Looking West Existing Condition



Platte Avenue in Knob Hill Looking West Future Perspective View (PPRTA A: 121)



Eastern Reaches Ambitions



Knob Hill Strategies (PPRTA A: 121/B: 331)



Signalization Strategy: Introduce $\frac{1}{4}$ mile spaced signals along Platte Avenue to manage speeds and assist crossings at:

- Platte/Boulder
- Platte Avenue/Platte Place
- Platte Avenue/ Iowa Avenue

Cross Section Modifications

- Seek ways to allocate additional roadside space to pedestrian amenities
- Maintain flexibility with respect to future Union intersection congestion treatment

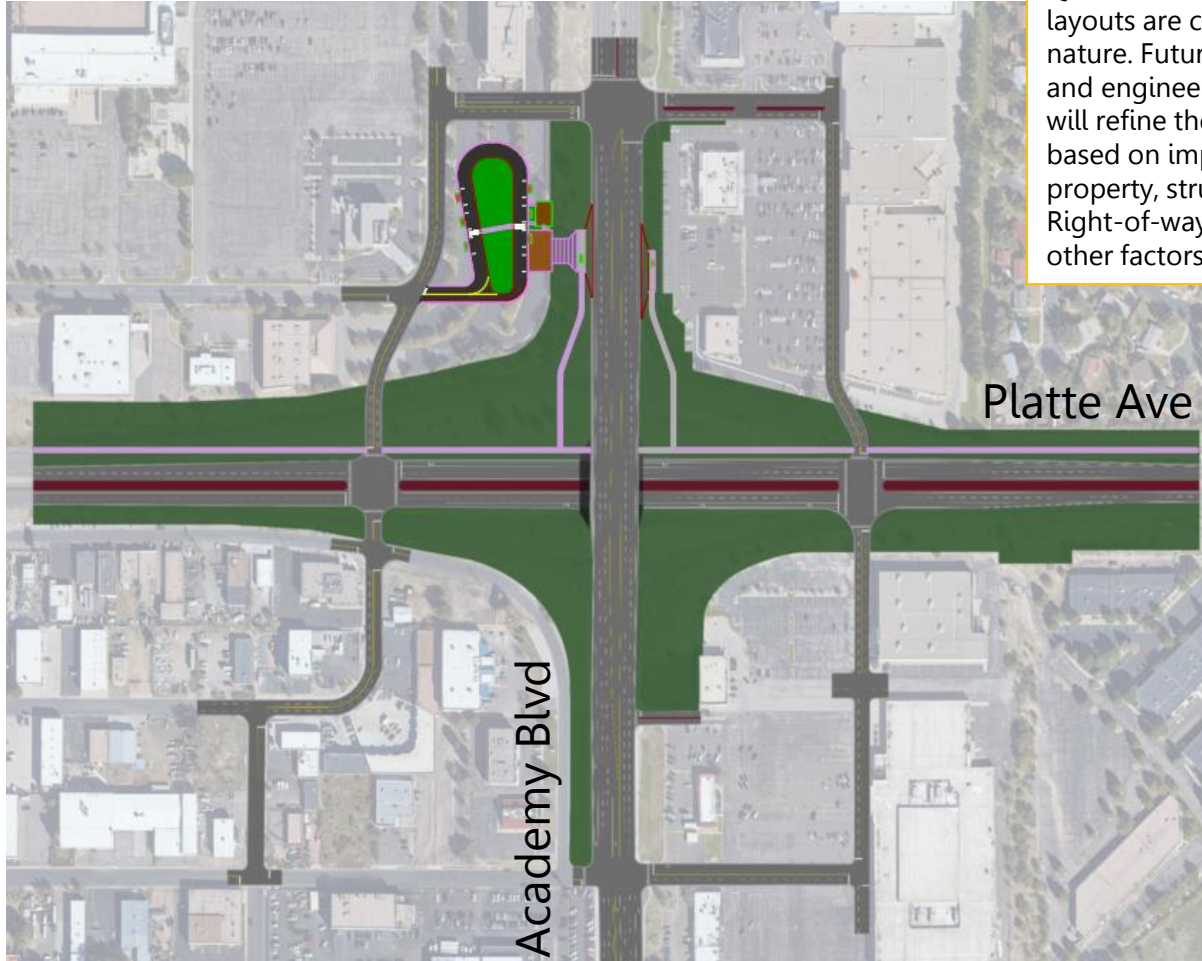
Environmental design

- Implement design features that promote safety and security. Such features can include pedestrian lighting, pedestrian amenities, and high roadside visibility

Intersection Improvements

- Circle Drive/Platte Avenue Intersection Enhancements (PPRTA B: 331)

Platte Ave/Academy Blvd Quadrant Road Intersection Vision (PPRTA B: 330)



Quadrant roadway layouts are conceptual in nature. Future planning and engineering efforts will refine the concepts based on impacts to property, structures, Right-of-way, cost and other factors

Platte/Academy Quadrant Road Intersection Implementation (PPRTA B: 330)



Platte Ave

Academy Blvd

Eastern Reaches Recommendations



- Widen Platte Avenue to provide continuous 6 lanes east to Powers Boulevard (PPRTA B: 332)
- Provide shared use path along Platte Avenue, connecting to nearby trail network (PPRTA B: 332)
- Address frontage road proximity as redevelopment opportunities arise

Next Steps

- Refine recommendations to address input and technical requirements
- Develop investment scenarios and project prioritization
- Develop Draft report