

TABOR Excess Revenue Resolution

Parks, Recreation and Cultural Services Department

July 22, 2019

Karen Palus, Director



Historic Connections and our Park System Master Plan



- We will be celebrating our Sesquicentennial in July 2021. We are fortunate for the wonderful gifts our City's Founder General Palmer bestowed upon us. This TABOR retention aligns with key parks he was responsible for creating in our City.
- The other set of projects aligns directly with our Master Plan efforts and direction from the community. It also is an effort to continue to address our areas where funding gaps exist due to our funding silos and constraints.

Master Plan Top 10 Issues to be addressed:

1. Insufficient and uncertain funding
2. Park structures and facilities in poor condition
3. Natural and historic resource conservation, restoration and management needs
4. Gaps in trail system
5. Some parks are loved to death(over used)
6. Flood, fire and drought impacts
7. Lack of public awareness about contributions and benefits of parks, trails and open spaces
8. High cost of water for park maintenance
9. Safety concerns and the need for park rule enforcement
10. Priorities and values of community members need to be determined

Proposed Projects

Emphasis on Sesquicentennial 150th



| Proposed Projects | Amount |
|--|--------------------|
| Historic Parks- Antlers, Acacia and Alamo Square/Pioneers Museum | 2,000,000 |
| Monument Valley Park- Lighting, Irrigation, Pavilion and Ponds | 1,000,000 |
| Palmer Park- Signage | 200,000 |
| Cottonwood Creek Community Park Artificial Fields(3) | 1,400,000 |
| Leon Young Sports Complex Parking Lot | 213,000 |
| Sport Court Replacement (4) Thorndale/Boulder | 400,000 |
| Panorama Park- Water Feature and Play Area | 500,000 |
| Trail Improvements- Sand Creek, Mesa, Homestead and Legacy Loop | 1,000,000 |
| Cemetery Parking Lots | 45,000 |
| Norman Bulldog Coleman Community Park Master Plan | 242,000 |
| TOTAL | \$7,000,000 |

Historic Parks: Acacia, Antlers and Alamo Square/Pioneers Museum

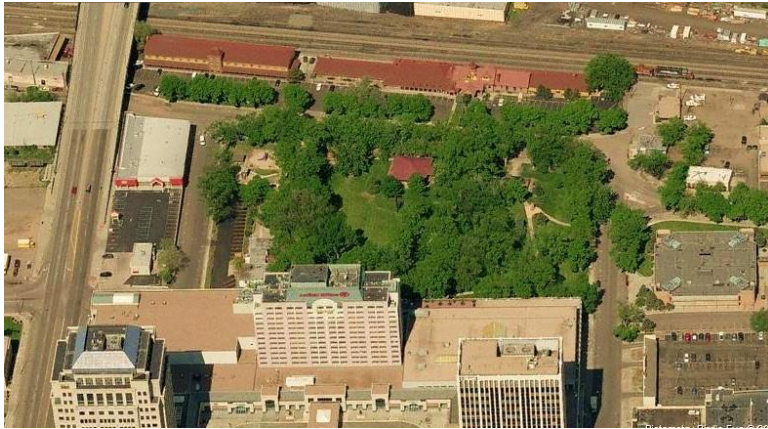


Acacia, Antlers and Alamo Square/Pioneers Museum \$2,000,000

These three sites are currently going through a re-master planning process. These funds will allow for implementation of elements identified in the new planning effort. Expect improvements such as lighting, ADA improvements, new pedestrian areas and connections, potential dog park amenities, community gathering spaces and exhibit expansion. These three sites are all in downtown which is everyone's neighborhood.



Historic Parks: Acacia, Antlers and Alamo Square/Pioneers Museum



Monument Valley Park



Monument Valley Park \$1,000,000

Funding to potentially address two pond restorations, irrigation replacement, historic pavilion restoration, tree replacements and sports lighting for pickleball courts . This park is a community park and serves the central and west areas but is a destination site for events, commuters and sports activities alike.



Monument Valley Park



Palmer Park



Palmer Park \$200,000

Funding to address wayfinding and signage replacement in the park. Palmer serves the City as a regional park and is located closest to our North, Central and Eastern residents. One of the chief requests we hear from our residents and visitors is to improve trail signage to minimize confusion when out in the park.



Artificial Fields

Cottonwood Creek Community Park

Baseball Fields (3)



Cottonwood Creek Community Park \$1,400,000

Funding to address water conservation at Cottonwood Creek Community Park. Converting three baseball fields from turf to artificial will save us on water expenditures and maintenance time. This project will provide a consistent playing surface and increase the playing time available for the community athletic programs which serves the north and east teams at this time. Total cost of project is \$1.6 million.



Leon Young Sports Complex Parking Lot



Leon Young Sports Complex Parking Lot \$213,000

Funding will address one of the worst parking lots we have in our system. This facility is heavily used by the South and Central community athletic teams and is part of the summer's myriad of tournaments. The parking lot is in need of replacement so that we can minimize hazards and provide a safe space for our residents and visitors.

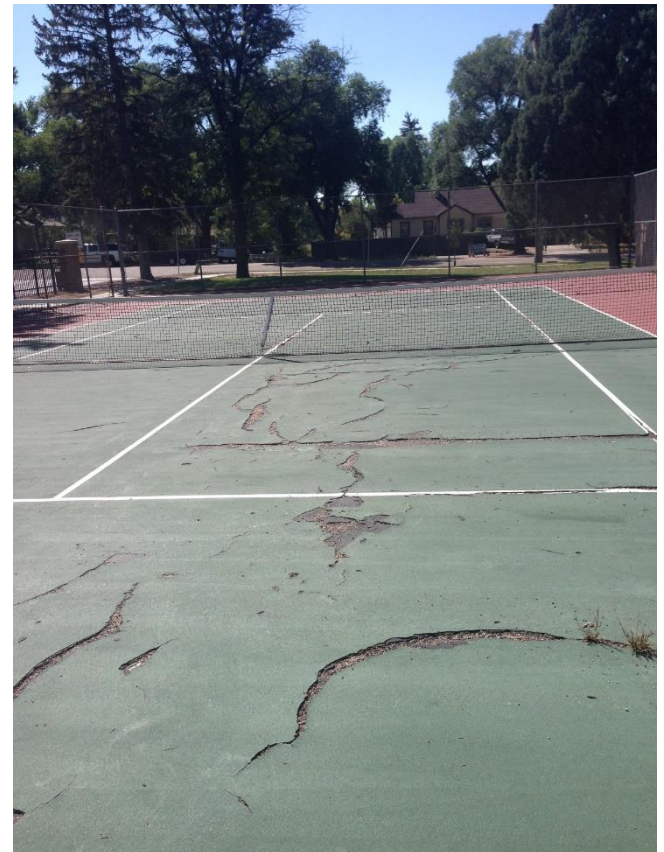


Sport Court Replacement Boulder and Thorndale Park Courts (4)



Sport Court Replacement - \$400,000

Funding to continue replacement of tennis courts that have been locked due to degradation and unsafe playing conditions. A total of 42 courts are scheduled for replacement at a cost of \$100,000 per court. Boulder and Thorndale Parks were selected based on community support and continued interest in these two neighborhood parks who serve the Central and West areas of our City.



Panorama Park Master Plan Implementation



Panorama Park Master Plan Implementation \$500,000

Panorama Park is currently in the Master planning stage for a re-envisioned neighborhood park in the southeastern area of our City. There has been great community investment in creating a park that is connected to the neighborhood, has amenities for all ages, ADA connections, lighting, universally accessible playground and provides a community gathering space. **These funds will be leveraged with private, public and grant funding and go towards the water play features and support facilities.** Estimated project cost is in the \$5-7 million.



Trail Improvements

Homestead, Legacy Loop, Mesa and Sand Creek



Trail Improvements \$1,000,000

Funding to address old asphalt trails and continue the efforts to connect the Legacy Loop. These funds will allow us to continue the work we began with 2D to replace old asphalt segments located on the Homestead, Mesa and Sand Creek trails. These trails are located in the North, West and East/South areas of our City. This is a gap area in our current funding streams.



Trail Improvements

Homestead, Legacy Loop, Mesa and Sand Creek



Cemetery Parking Lots Evergreen and Fairview



Cemetery Parking Lots \$45,000

Funding to address parking lots in our two historic cemeteries. This will allow for a safe and improved experience by our residents and visitors. The Evergreen lot is 1,434 sq yards and Fairview lot is 536 sq yards. These facilities serve a community wide constituency but are located in the south and western areas of our city.



Norman Bulldog Coleman Community Park Master Plan



- Master Plan the 54 Acre site with the potential for additional acreage with an exchange if that moves forward

Questions

