

GENASYS ZONEHAVEN

Colorado Springs EVACUATION Management Clarifications

August 8, 2022

Photo Credit: Levan Badzgaradze



Zonehaven or FLEET?

Wrong Question



Evacuation
Tool



ZONEHAVEN

Evacuation
Toolbox



What is the Correct Priority?

Right Question



Publish
Evacuation
Maps



Speed:
Data-Driven
Evacuation
Decisions and
Immediate
Communication



Old Evac Process: Too Slow, Errors



Ad-hoc: Guessing fire's path, drawing areas on maps



Unknown real-time traffic implications



Multi-agency decision making and communication issues

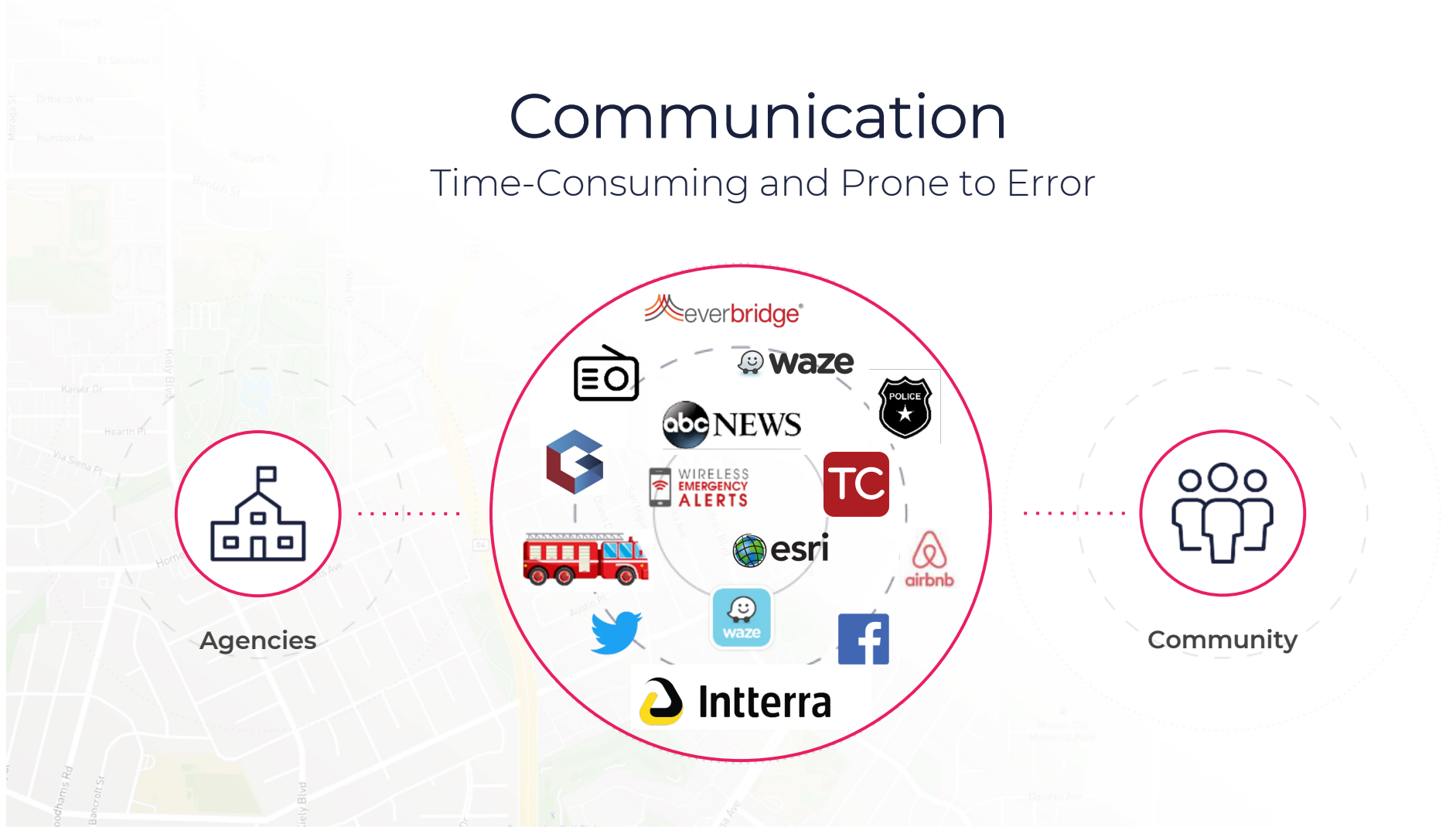


Public Confusion: Spotty and unclear evac instructions



Communication

Time-Consuming and Prone to Error

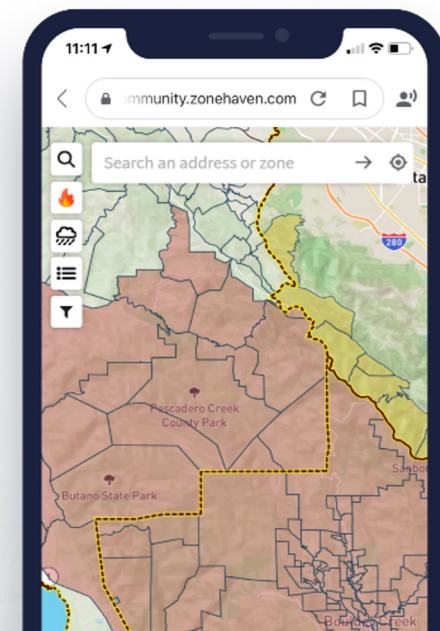
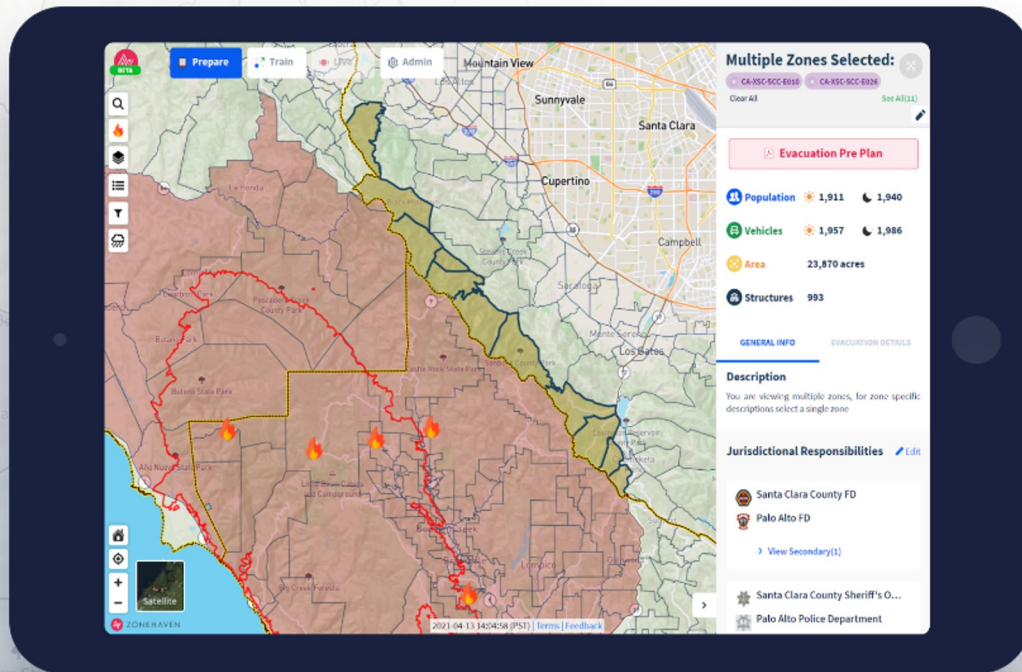


New Process

Data-Driven Evacuation Decisions and Immediate Execution

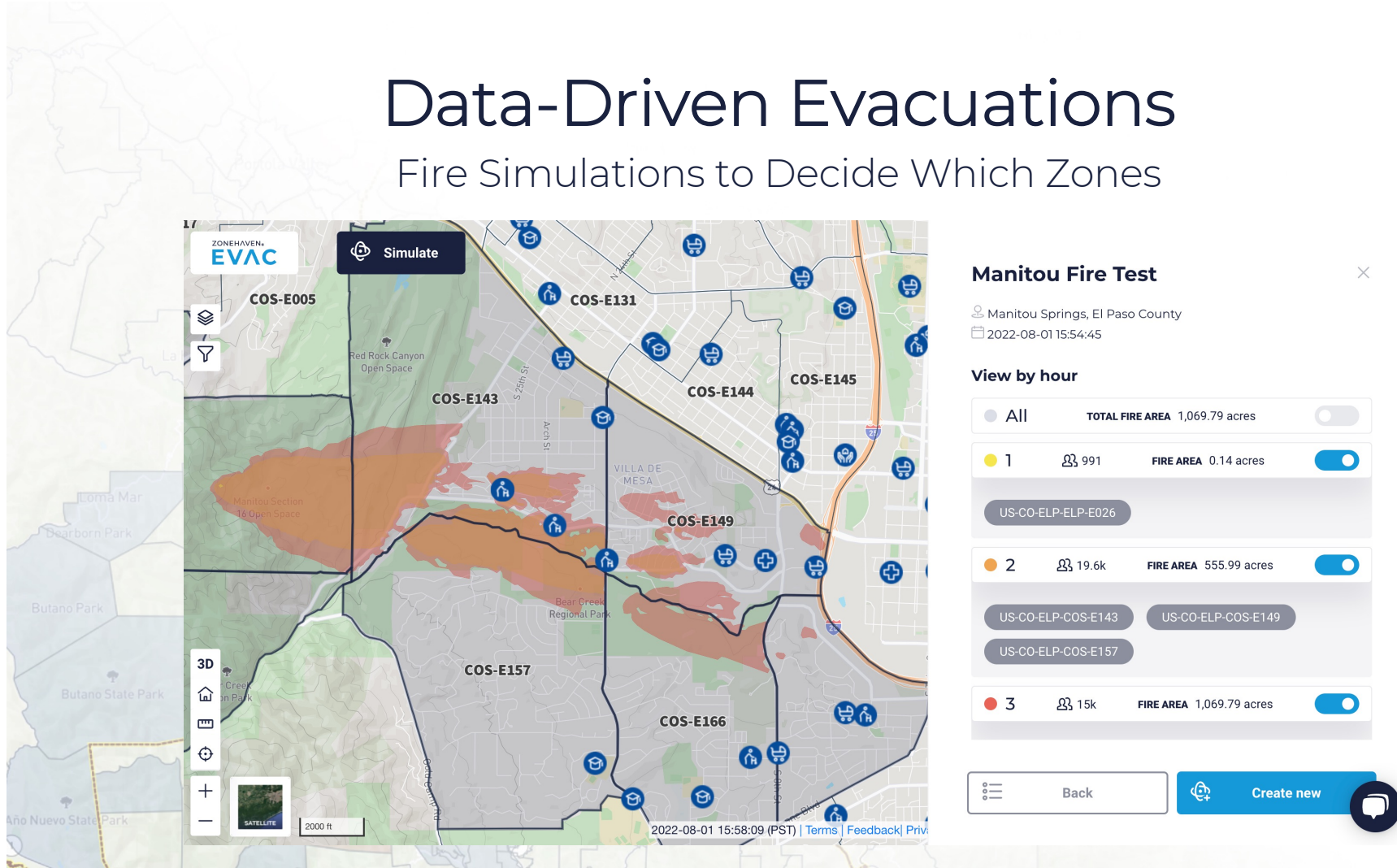
AWARE

ZONEHAVEN[®]
AWARE



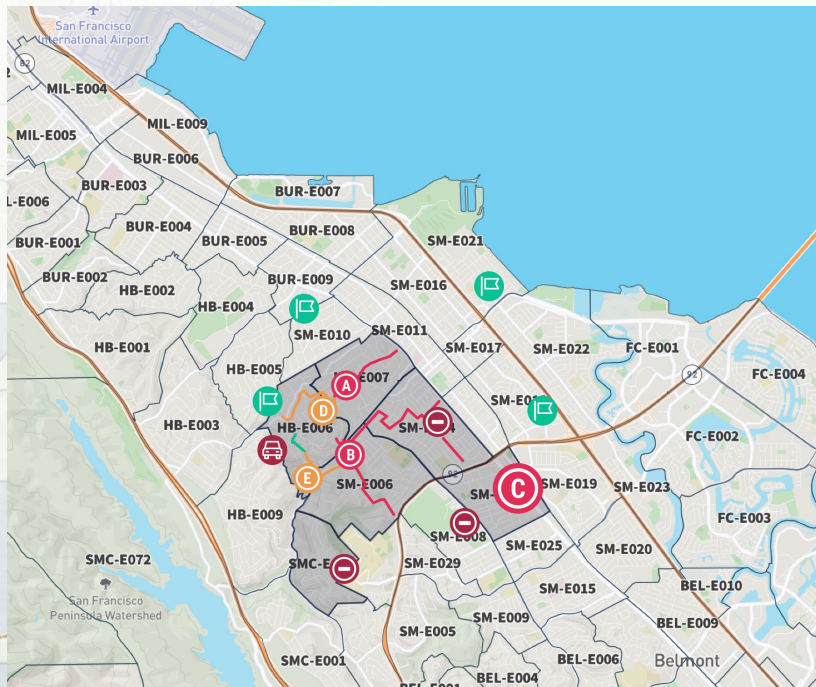
Data-Driven Evacuations

Fire Simulations to Decide Which Zones



Data-Driven Evacuations

Real-Time Traffic Modeling



Traffic Simulation



Show selected parameters

TIME TAKEN TO EVACUATE 5 hours

VIEW MODE Show map results using aggregated time

Choke Points

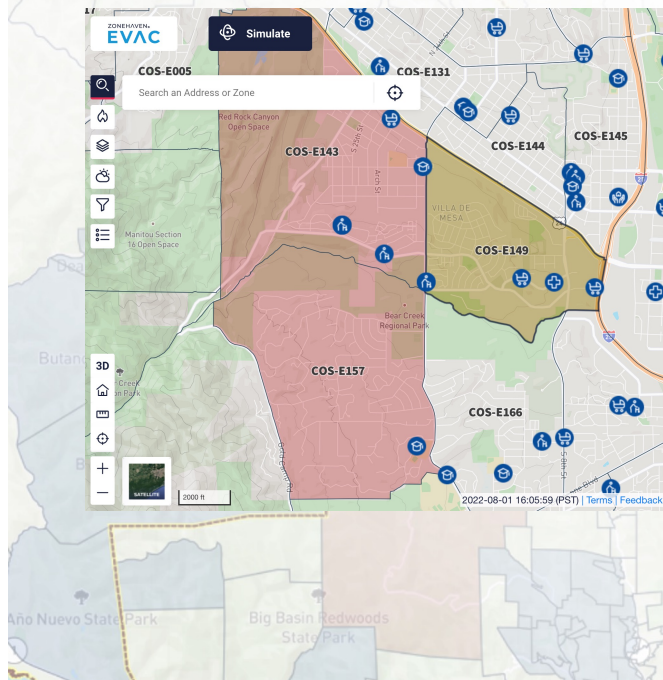
A	Name of Street 1 and Street 2 🚗 3,200 vehicles	+45 min
B	Name of Street 1 and Street 2 🚗 3,200 vehicles	+43 min
C	Name of Street 1 and Street 2 🚗 3,200 vehicles	+41 min
D	Name of Street 1 and Street 2 🚗 3,200 vehicles	+30 min

Multi-Channel Notifications

Simple Communication from an Authoritative Source

AWARE

ZONEHAVEN®
AWARE



1 Zone selected

STATUS REASON : FAST-MOVING WILDFIRE COMING FROM MANITOU OPEN SPACE - TEST

Hide zones list Update status

US-CO-ELP-COS-E149
Evacuation Warning

Summary

POPULATION 1,136 1,894

VEHICLES 1,407 2,814

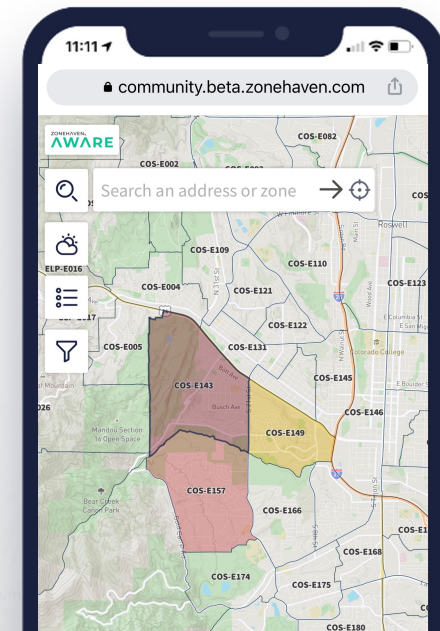
AREA 708 acres

STRUCTURES 894

Download PDF Booklets

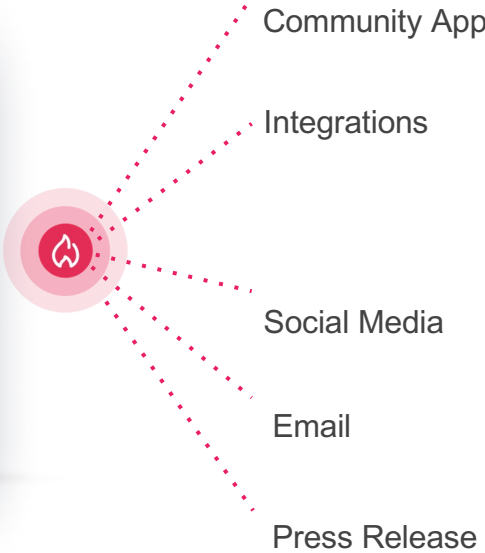
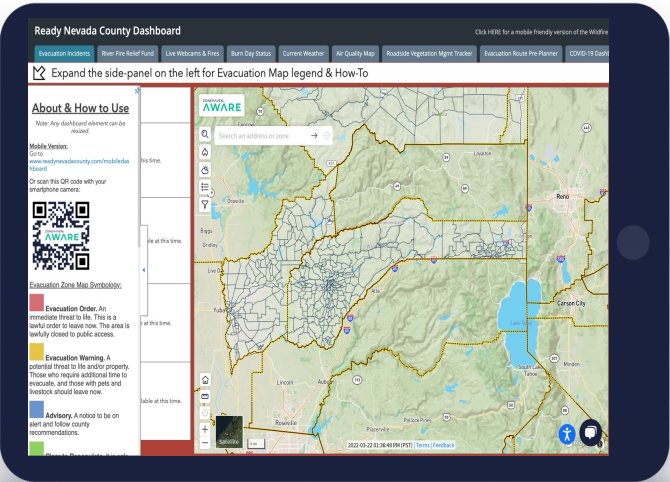
General info Evacuation details

COMMONLY KNOWN AS
Add commonly known as...



Immediate Multi-channel Notifications

Simple, reliable communication



ZONEHAVEN®
AWARE



MOUNTAIN VIEW
LIVE
NOW Clear 80 WIND: N 14
TODAY Sunny 77
TONIGHT Clear 59
TOMORROW Sunny 72

BREAKING NEWS
EVACUATIONS ORDERED FOR 50-ACRE BRUSH FIRE
NAPA

SEARCH Search an address or zip code

WARE

Service Champions
Heating & Air Conditioning
★★★★★
(800) 5-CHAMPS

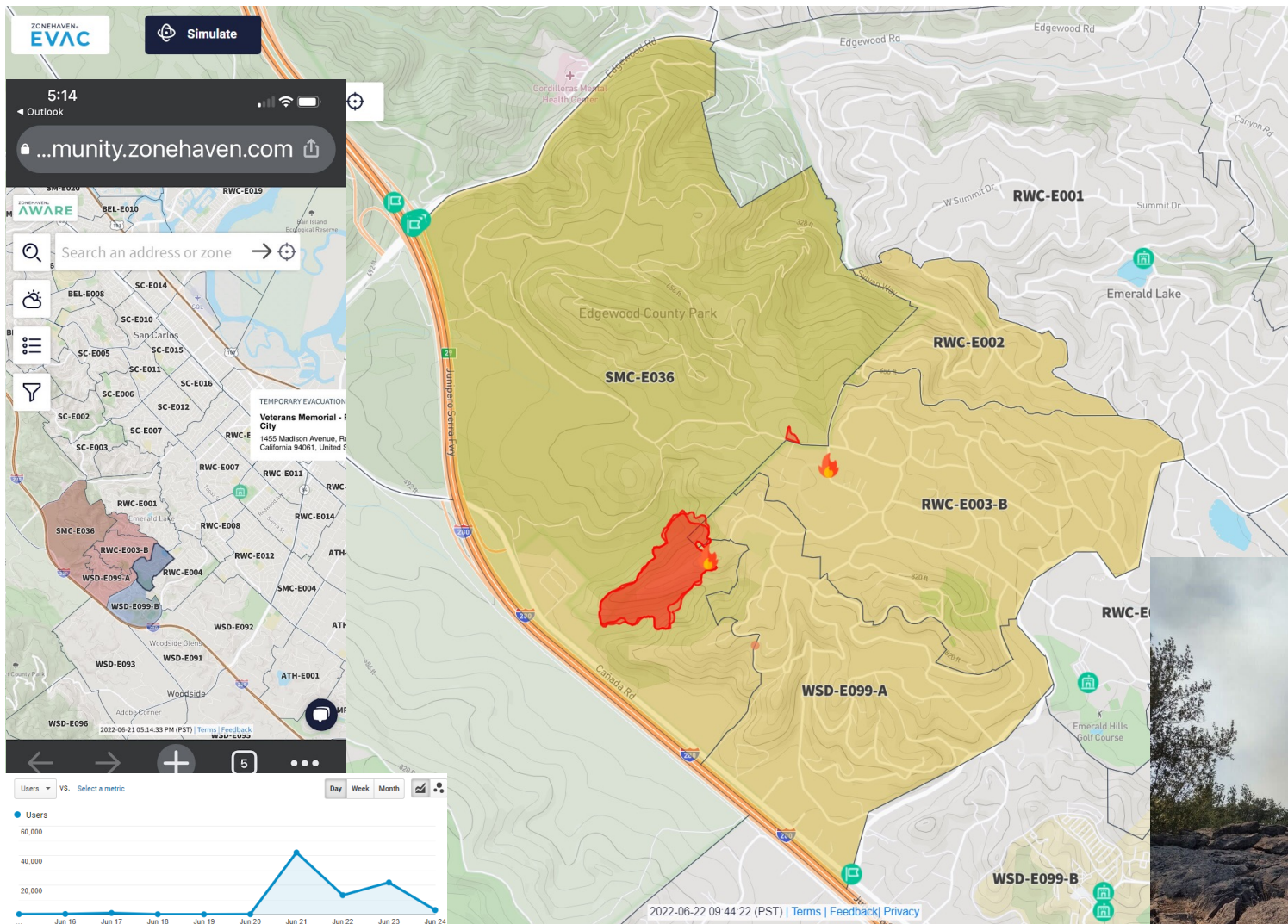
BIG TIRES
THE TEAM YOU TRUST

POWERBALL MAY 30

KRON ON

2022-05-31 05:01:09 PM (PST) | Terms | Feedback

The map displays Napa County with various fire evacuation zones. A large red-shaded area covers the central and northern parts of the county, including the Napa Valley and Napa Springs regions. A blue-shaded area follows the Napa River valley. Other zones are shown in light green and grey. The map includes labels for various fire districts (e.g., NPA-E159, NPA-E160, NPA-E161, NPA-E162, NPA-E164, NPA-E167, NPA-E200, NPA-E201, NPA-E202, NPA-E203, NPA-E204, NPA-E205, NPA-E206-A, NPA-E206-B, NPA-E207, NPA-E208, NPA-E209, NPA-E210, NPA-E211, NPA-E212, NPA-E213, NPA-E214-A, NPA-E214-B, NPA-E215-A, NPA-E215-B, NPA-E216, NPA-E217, NPA-E218, NPA-E219, NPA-E220, NPA-E221, NPA-E222, NPA-E223, NPA-E224, NPA-E225, NPA-E226, NPA-E228, NPA-E229, NPA-E230, NPA-E231, NPA-E232, NPA-E233, NPA-E234) and cities like Napa, Yuba City, and Napa Springs. A search bar is located at the top left of the map area. The 'LIVE' indicator is prominently displayed in a red box at the top center. The 'BREAKING NEWS' banner is at the bottom center. The 'KRON ON' logo is in the bottom right corner. The 'BIG TIRES' logo is in the bottom left corner. The 'POWERBALL' logo and date 'MAY 30' are in the bottom center. The 'Service Champions' logo is in the bottom left corner. The 'WARE' logo is in the top left corner. The 'MOUNTAIN VIEW' logo is in the top left corner. The 'Napa County' logo is in the top right corner. The date and time '2022-05-31 05:01:09 PM (PST)' and 'Terms | Feedback' are in the bottom center.



7:45 33%

Search

Posts About Photos Mentions

CAL FIRE CZU San Mateo-Santa Cruz Unit
47 minutes ago

EVACUATIONS UNDERWAY: One fire is contained #ColtonIC One still actively burning. #EdgewoodIC County of San Mateo - Government

community.zonehaven.com
Zonehaven AWARE | Find your Evacuation Zone now

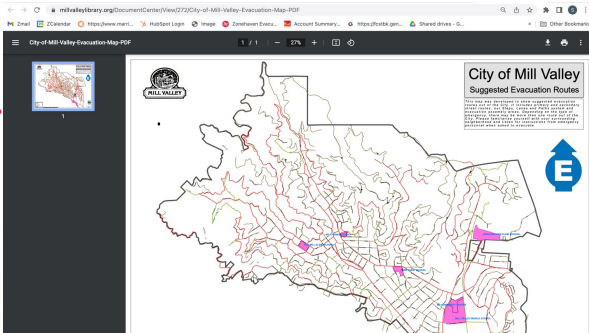
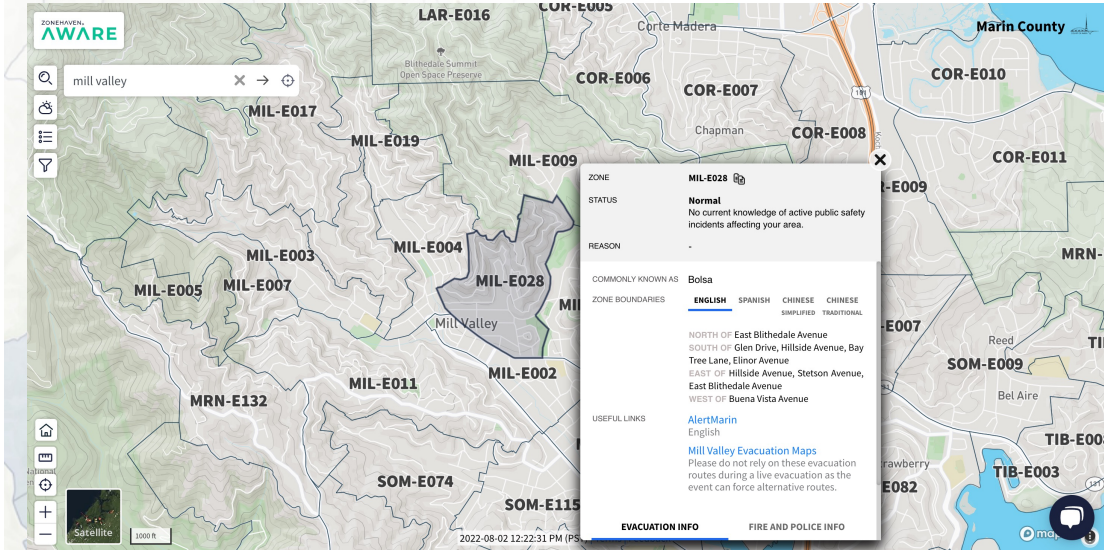
17 6 comments · 10 shares

Like Comment Share



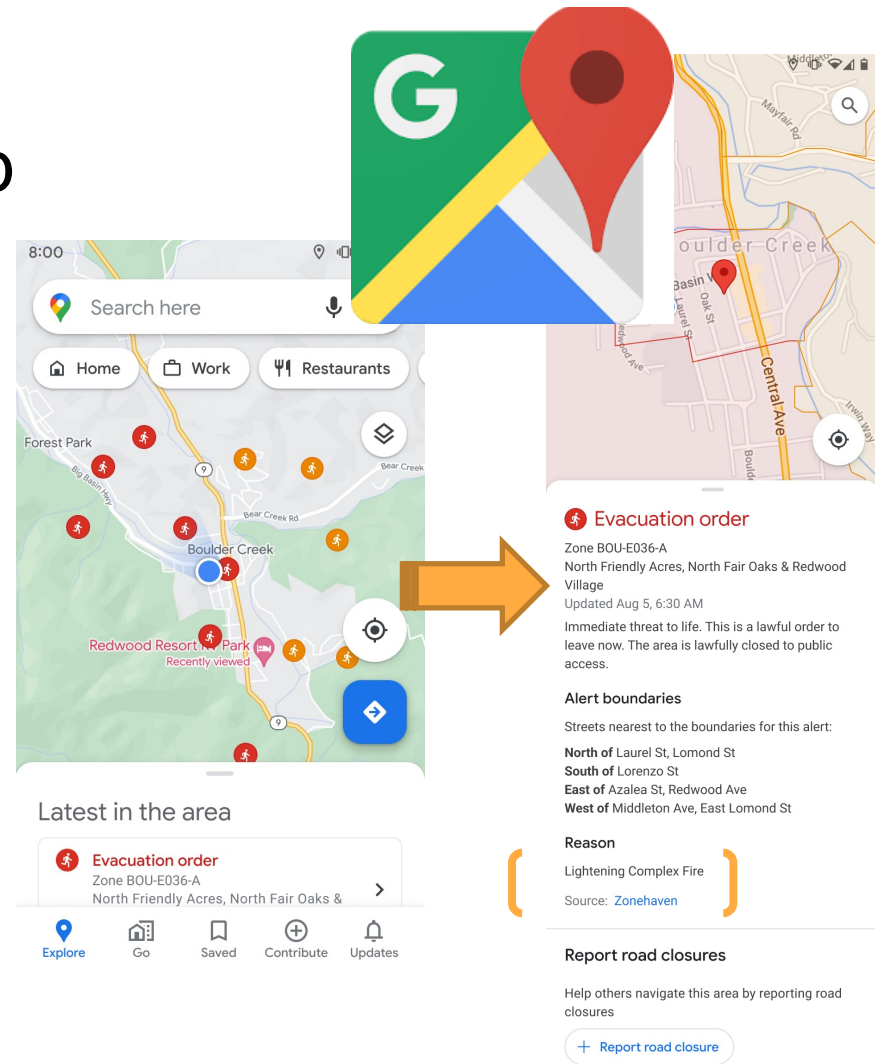
Some Cities Publish Evacuation Maps

Most Advise Residents NOT to rely on them



Google Maps Partnership

- 70% of Market (Waze #2 with 12%)
- Google Crisis Response Division
- January 2023: Live From Zonehaven
- Extended Information:
 - Zones and Status
 - Road Closures
 - Evac Shelters, Arrival Points
 - Real-time Routing



WAZE Partnership

Evacuation Zones

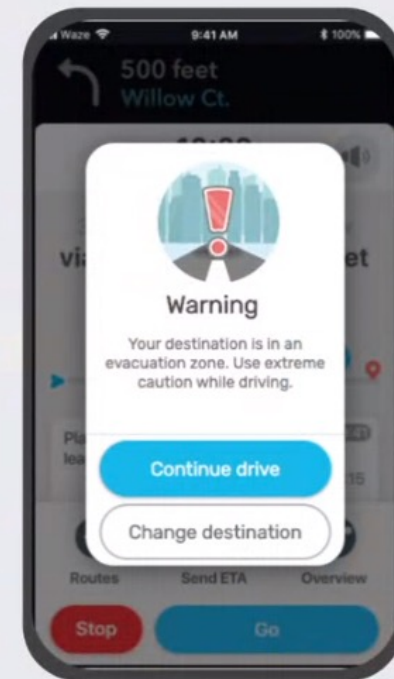
An area where an official organization orders an evacuation

If submitted in advance:

- Waze navigates users around the zone, even if the fastest route is through the zone
- Waze warns users trying to navigate into the zone and offers to change their destination

Dynamic zones discovered in real-time:

- Waze notifies users with a pop up if their destination is in the evac zone
- Waze is **not** able to navigate users around the zone itself





- Fire
- Debris Flow
- Active Shooter
- Tsunami
- Police Activity

2020 FIRES

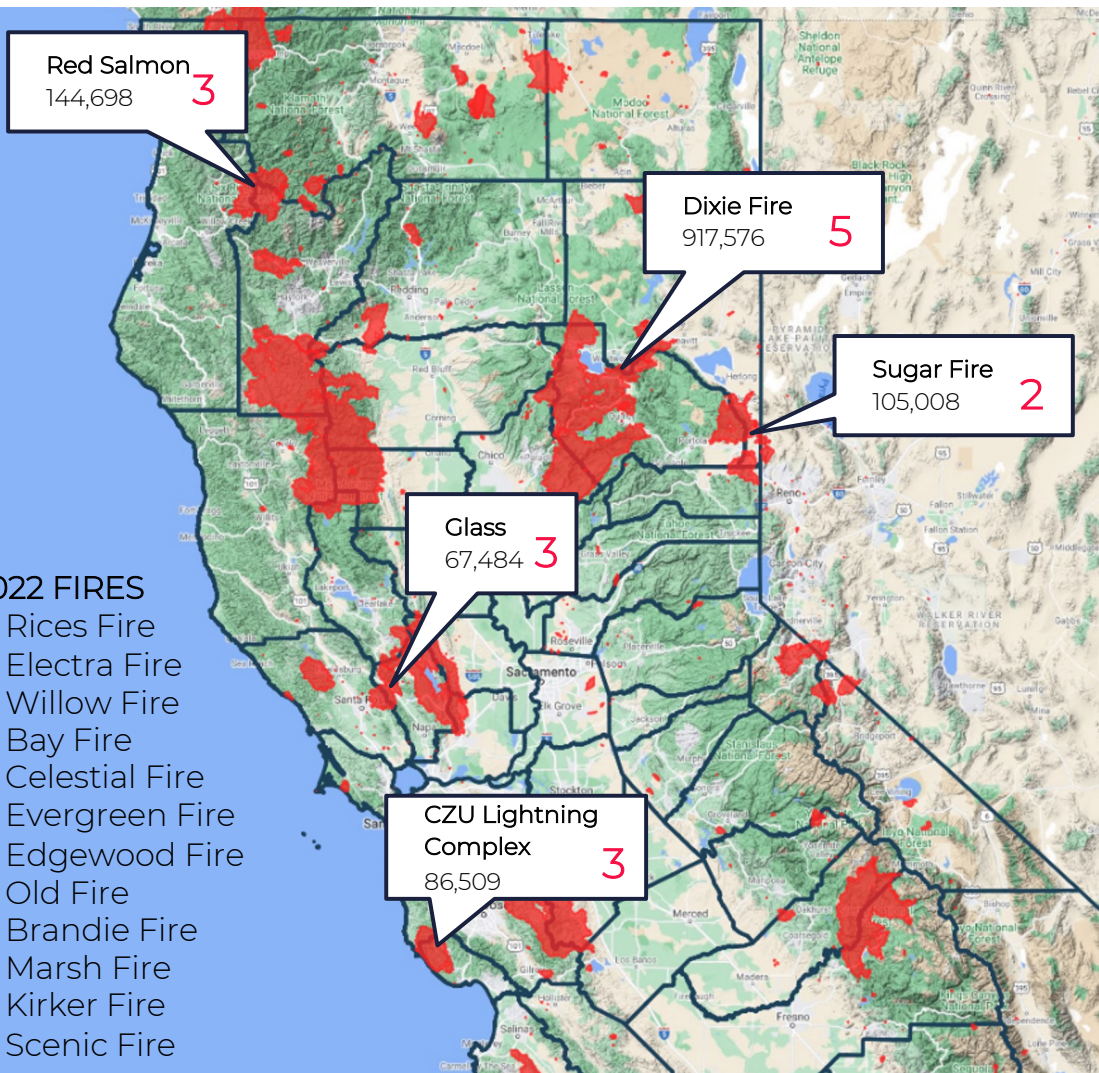
- Sign Hill Fire
- Glass Fire
- Red Salmon Fire
- CZU Complex Fire

2021 FIRES

- Estrada Fire
- Newell Fire
- Miners Fire
- Fawn Fire
- Bennett Fire
- McCash Fire
- Cache Fire
- Coyote Fire
- Glen Fire
- River Fire
- Antelope Fire
- River Complex
- Fly Fire
- Dixie Fire
- Beckwourth
- Tennant Fire
- Marshall Fire
- Church Fire
- Lava Fire
- Intanko Fire

2022 FIRES

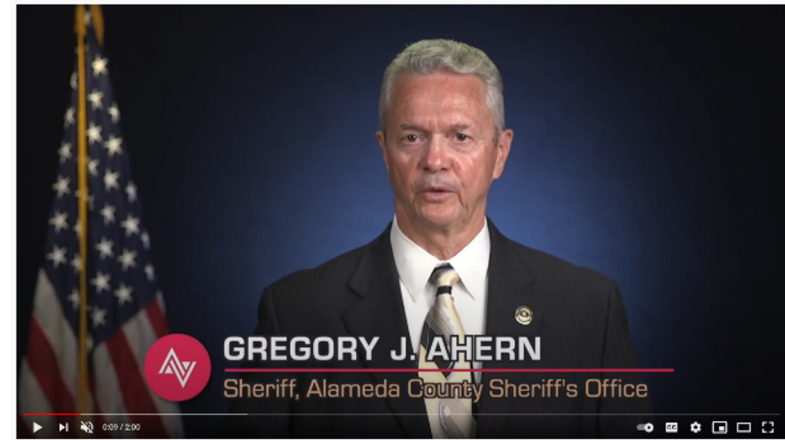
- Rices Fire
- Electra Fire
- Willow Fire
- Bay Fire
- Celestial Fire
- Evergreen Fire
- Edgewood Fire
- Old Fire
- Brandie Fire
- Marsh Fire
- Kirker Fire
- Scenic Fire



Nevada County, CA



Alameda County, CA



Atascadero, CA



Lake County, CA



Zonehaven Clarifications and Corrections

Camp Fire had Problems using Zonehaven:

- Zonehaven was not used (or even in existence) for Camp Fire
- Paradise had created Zones per FEMA recommendations:
 - “**The goal of an evacuation is to move as few people as needed the shortest distance to safety.** Zone-based evacuation plans can be most effective in meeting this goal. They reduce resource burdens, facilitate re-entry, and accelerate the transition to recovery.”
- Town educated residents to shelter-in-place until evacuated
 - This is independent and not related to having zones or not
- Delay in notification: Staff had Dispatch and 911 priorities

What is the Correct Priority?

Right Question

Publish
Evacuation
Maps

“Given the choice of implementing a Zone-based Evacuation Management System or to publish evacuation maps, I would prioritize Zonehaven. Speed is everything in evacuations, and Zonehaven cuts the time by 80% with better decisions.”

*Mark Brown, Executive Director
Marin County Fire Prevention District*

Data-Driven
Evacuation
Decisions and
Immediate
Communication



ZONEHAVEN

Genasys

*Providing equitable & consistent
evacuation planning and management*

Questions? Reach out to Stephen Sickler: ssickler@genasys.com

For more information visit: <https://www.zonchaven.com>

Photo Credit: Levan Badzgaradze