



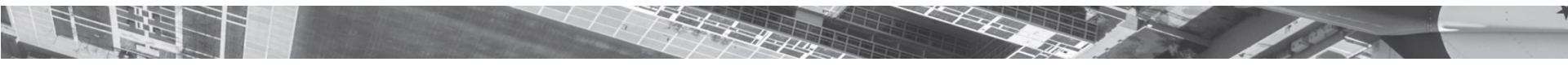
Pikes Peak Area
Council of Governments
Communities Working Together



Colorado Springs Regional Joint Land Use Study Overview

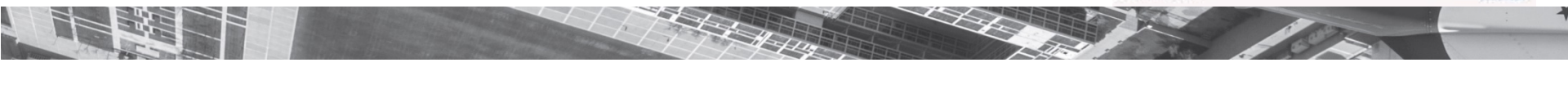
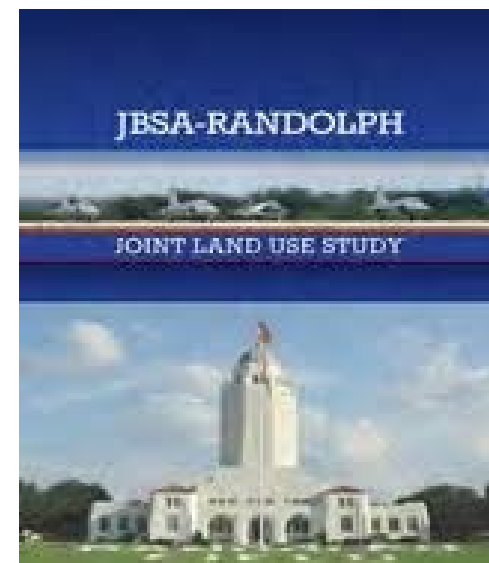
**City of Colorado Springs-City
Council
Council Work Session-Monday, Jan
7, 2019**

Brian Potts, JLUS Program Manager, PPACG

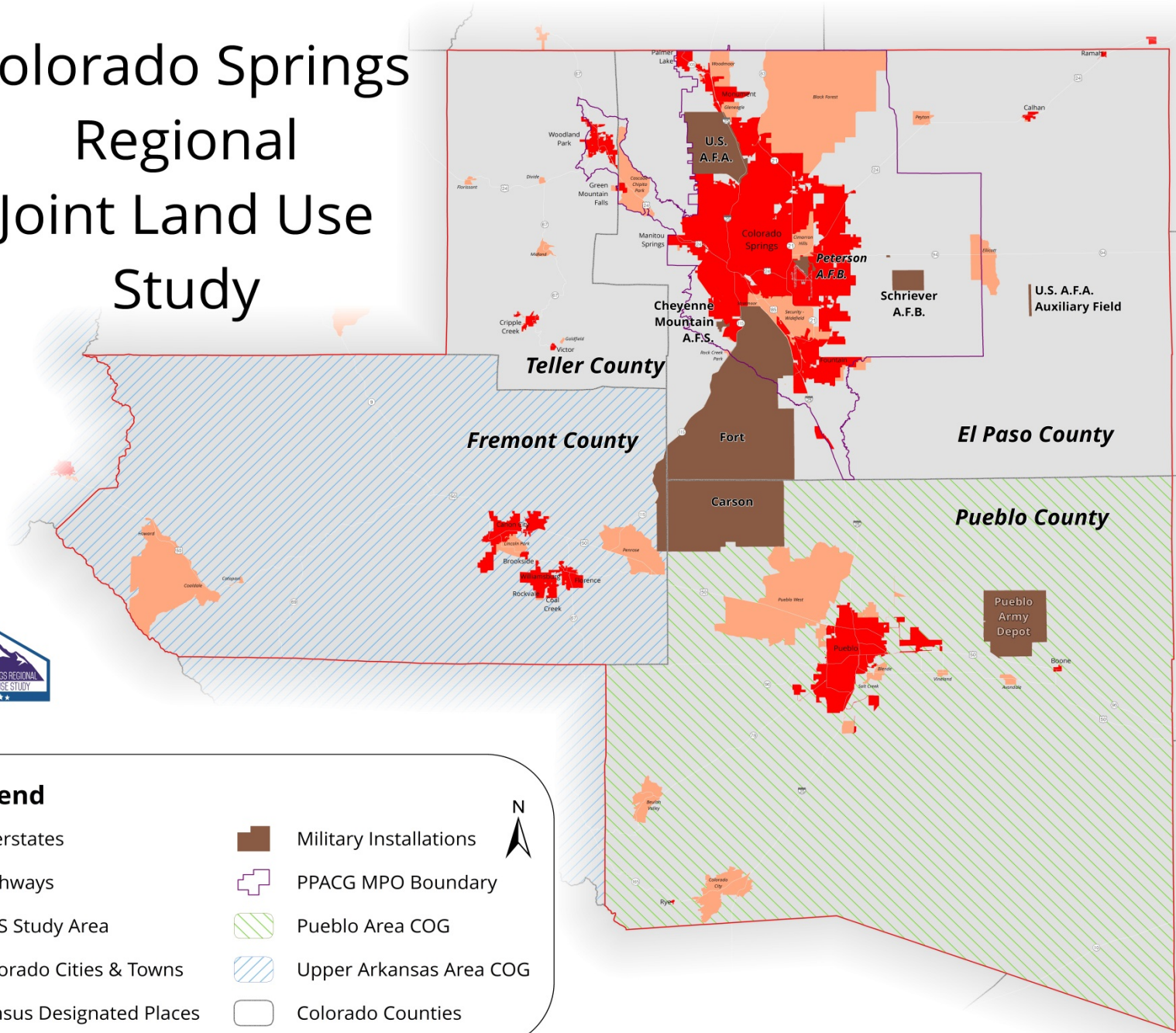


What is a Joint Land Use Study?

- A community-driven process
- Over 120 studies completed across the country but this is the first in Colorado
- Examines local issues related to land use when military installations and communities are neighbors
- Will produce a road map with recommendations that promote compatible land use to reduce operational impacts on installations, land, and communities adjacent to installations



Colorado Springs Regional Joint Land Use Study



Legend

	Interstates		Military Installations
	Highways		PPACG MPO Boundary
	JLUS Study Area		Pueblo Area COG
	Colorado Cities & Towns		Upper Arkansas Area COG
	Census Designated Places		Colorado Counties

N

Importance for Our Communities

- Rapid population growth
- Installation employment is growing as bases are built-out
- Growth has impacts on military operations and can increase military operational impacts on communities

Study Area Economic Impact Snapshot*	
Military-generated Employment	106,913
Labor Income	\$7,573,870,125
Total Installation Expenditures	\$1,549,993,900
Military-generated Economic Output	\$17,228,775,933
*2014 data compiled by Summit Economics, LLC	

County	Land Area (Sq. Mi)	Population 2015*	Population 2025*	Population 2045*
El Paso	2,130	677,022	791,904	1,024,521
Fremont	1,534	46,559	50,074	57,598
Pueblo	2,398	163,348	180,944	215,312
Teller	559	23,461	27,234	31,135
Totals	6,621	910,390	1,050,156	1,328,566
*Estimates per State Department of Local Affairs Demographic Office				



Study Process Activities

- Over 100 meetings were held with various stakeholders and working groups (including citizens) to gather information, and to discuss issues and recommendations
- Reviewed by Technical Committee (Peter Wysocki, Vice Chair) and Policy Committees (Councilor Bill Murray)
- Great collaboration with City staff
- Acceptance of final study report on Dec 19, 2018
- End of grant - Dec 31, 2018
- Implementation phase start Jan 2019
- Study available online:

www.ppacg.org/jlus-draft/



Importance for Colorado Springs

Key Study Findings:

- Balancing military operation needs and community development requires good communication/coordination between citizens, community leaders, and military officials to reduce impacts.
- Citizens want more information on what training activities occur around and above their communities. Some citizens expressed concern about living beneath flight training areas and noise.
- Communication and collaboration is occurring between the City and the military but there is room for improvement. The military is working to improve their engagement on development in the city.
- During this process, City council members have been expressing concerns about the potential impact of development around airports and on military missions.
- Stormwater, wildfire management, and transportation issues were important to both military and civilian stakeholders.



JLUS Strategies

- 1.1 - IMPROVE COLLABORATION AMONG MILITARY AND COMMUNITY STAKEHOLDERS ON JLUS TOPICS.
- 1.2 - UTILIZE ONLINE MAPPING AND DATA TOOLS TO ASSIST STAKEHOLDERS WITH MANAGING MISSION ENCROACHMENT ISSUES.
- 1.3 - DEVELOP METHODS TO INFORM AND COLLABORATE WITH RESIDENTS AND COMMUNITY LEADERS TO ADDRESS COMPATIBILITY.
- 1.4 - INCLUDE MILITARY STAKEHOLDERS IN LAND USE PLANNING PROCESSES TO ADDRESS REGIONAL COMPATIBILITY ISSUES.
- 2.1 - ACCOUNT FOR MILITARY REQUIREMENTS IN REGIONAL UTILITY DEVELOPMENT.
- 2.2 - MINIMIZE INCOMPATIBLE LAND USES AND DEVELOPMENT AFFECTED BY MILITARY FLIGHT OPERATIONS.

JLUS Strategies

- 2.3 - PURSUE LAND USE BUFFERING AND CONSERVATION OPPORTUNITIES TO PRESERVE MISSION.
- 2.4 - ADDRESS TRANSPORTATION NEEDS AROUND INSTALLATIONS
- 2.5 - MINIMIZE IMPACTS TO MILITARY INSTALLATION PROPERTY AND NATURAL SYSTEMS FROM STORMWATER FLOWS.
- 2.6 - PLAN FOR LONG-TERM STORMWATER AND UTILITY INFRASTRUCTURE CHALLENGES EXPECTED FROM FUTURE MISSION GROWTH.
- 2.7 - PROTECT FREQUENCY SPECTRUM CAPACITY THROUGH LAND AND AIRSPACE BUFFERING.
- 3.1 - COLLABORATE TO ADDRESS MISSION AND COMMUNITY IMPACTS FROM NATURAL DISASTERS.

Stay Engaged and Informed

- Pikes Peak Area Council of Governments – Joint Land Use Study Program
- 719-471-7080
- jlus@ppacg.org
- www.ppacg.org/military

