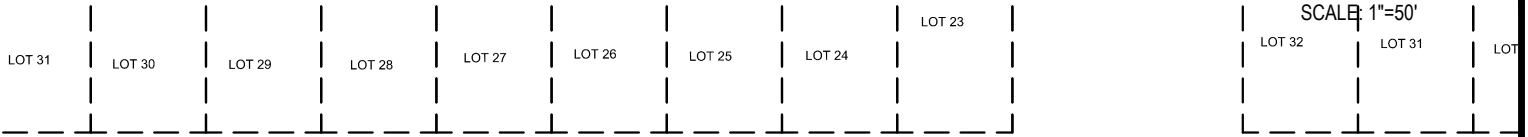
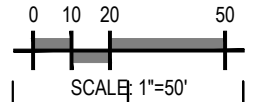


EXHIBIT B - ZONE CHANGE EXHIBIT

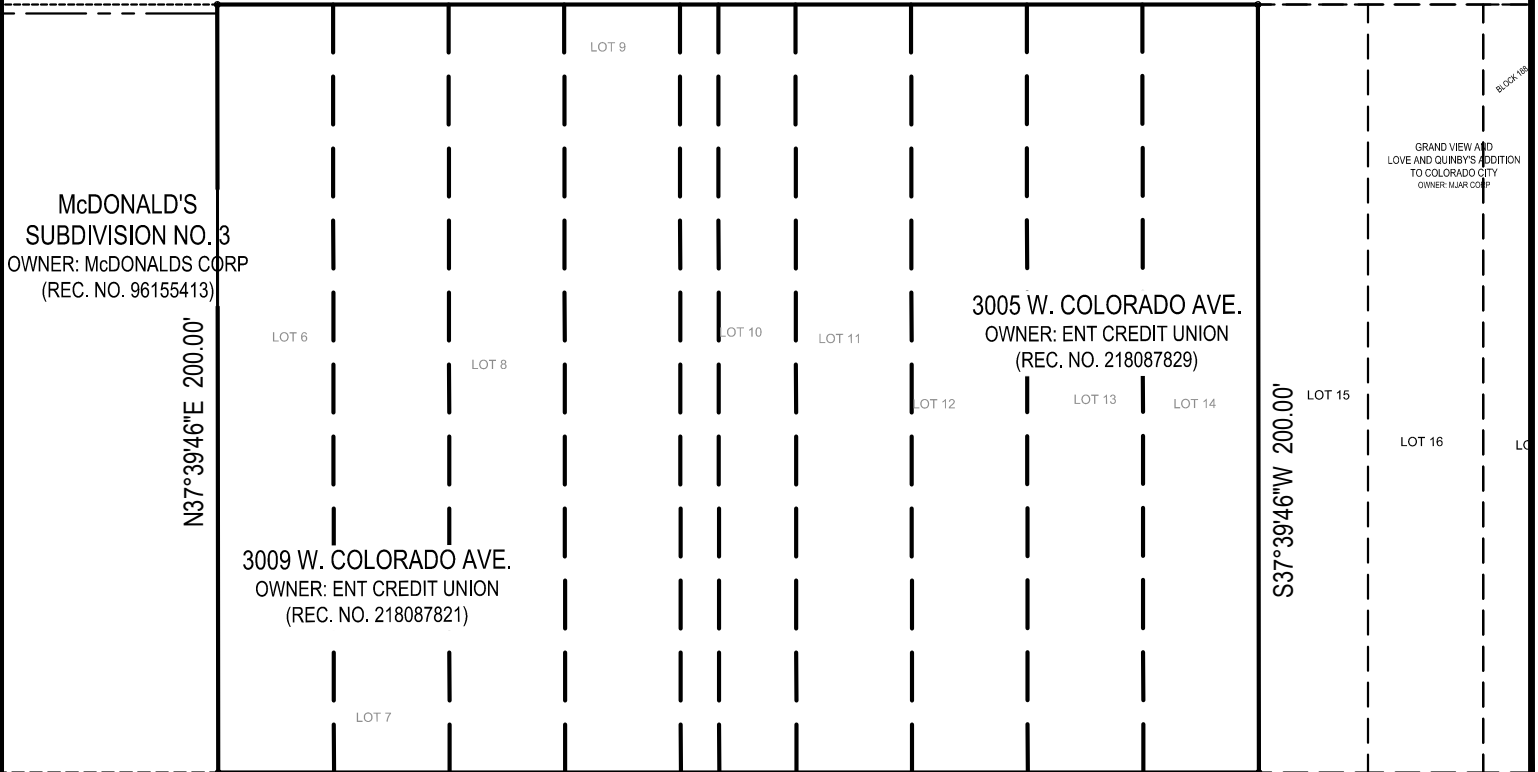
LOT CONSOLIDATION FOR 3005/3009 W. COLORADO AVE. ENT CREDIT UNION

LOTS 6-14 BLOCK 188, LOVE AND QUINBY'S ADDITION TO COLORADO CITY
IN THE NORTHEAST QUARTER OF SECTION 10, T14S, R67W OF THE 6TH P.M.
CITY OF COLORADO SPRINGS, COUNTY OF EL PASO, STATE OF COLORADO



COLORADO AVENUE
MINOR ARTERIAL (100' PUBLIC R.O.W.)

N52°16'01"W 270.99'



LEGEND	
	PROPERTY BOUNDARY LINE
	ADJACENT PROPERTY BOUNDARY LINE

N52°16'01"W 270.99'

BASIS OF BEARING

ALL BEARINGS ARE GRID BEARINGS OF THE COLORADO STATE PLANE COORDINATE SYSTEM, CENTRAL ZONE, NORTH AMERICAN DATUM 1983. THE SOUTH ROW LINE OF COLORADO AVENUE, ALSO BEING THE NORTH LINE OF LOVE AND QUINBY'S ADDITION TO COLORADO CITY, MONUMENTED ON THE NORTH WITH A 2" W/ ALUMINUM CAP, "PE-LS 9853" AND ON THE SOUTH BY A NO. 4 REBAR W/ NO CAP, BEING THE NE CORNER OF LOT 26, AND IS CONSIDERED TO BEAR N52°16'01"W.

CPC ZC 18-00134

ENT CREDIT UNION
 LOTS 6-14 BLOCK 188, LOVE AND QUINBY'S ADDITION
 3005 & 3009 W. COLORADO AVE.
 COLORADO SPRINGS, CO
 EXHIBIT B - ZONE CHANGE EXHIBIT - SHEET 2 OF 2

Project No:	ECU0000010
Drawn By:	STF
Checked By:	JRR
Date:	SEPTEMBER 5, 2018

Galloway
 Planning, Architecture, Engineering.
 6162 S. Willow Drive, Suite 320
 Greenwood Village, CO 80111
 303.770.8884 O
 www.gallowayUS.com

EXHIBIT B

©2017 Galloway & Company, Inc. All Rights Reserved