



YOW Architects PC
 Architecture & Planning
 115 S. Weber Colorado Springs, Colorado 719-475-8133

MICRO APARTMENTS
 125 N Pakside Drive Colorado Springs CO 80909

Project Number: 22-035
 Date: 06/20/2022
 Drawn By: MKCS
 Checked By: YOW

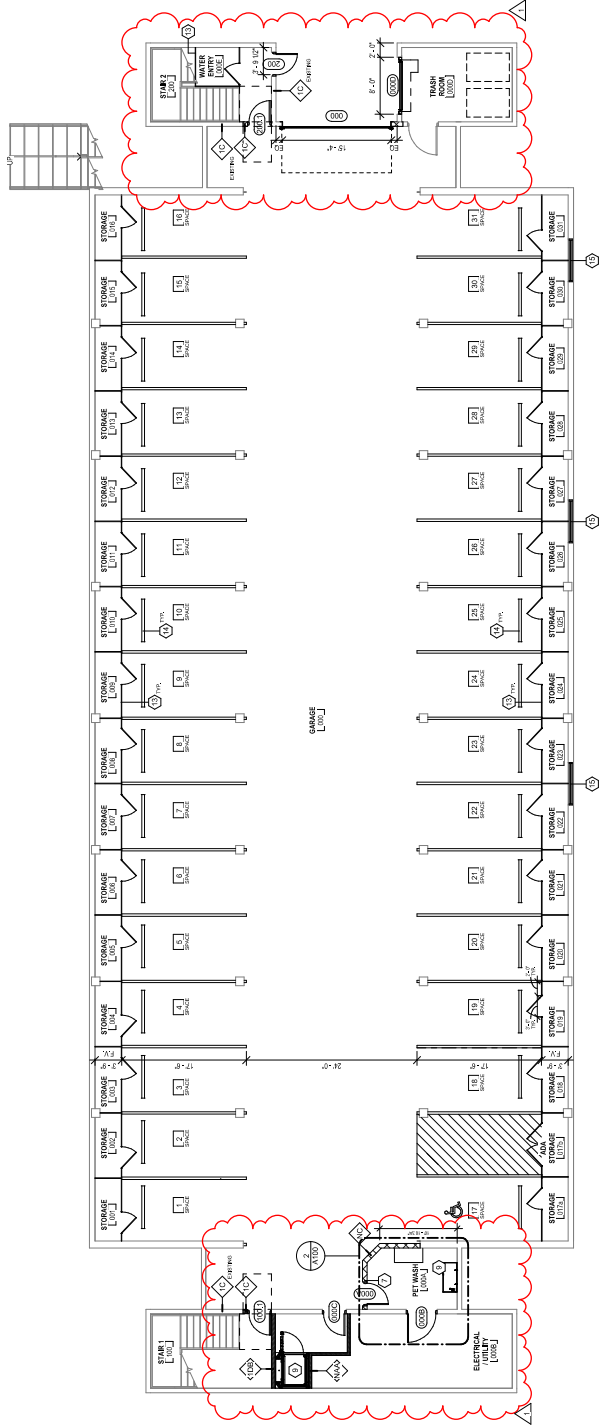
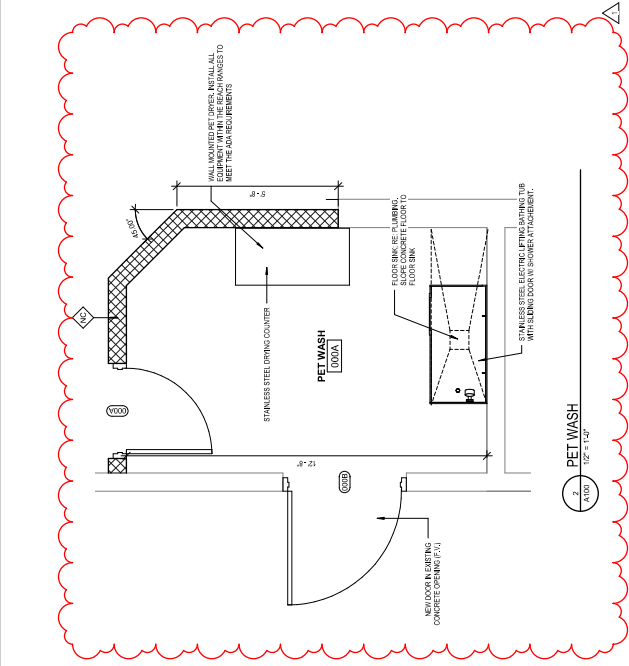
A100
 FLOOR PLAN GARAGE

FLOOR PLAN NOTES

- DIMENSIONS INDICATED ARE FROM FACE OF STUD AND TO FACE OF MASONRY WALLS UNLESS NOTED OTHERWISE. SEE ENLARGED FLOOR PLANS FOR ADDITIONAL DIMENSIONS NOT INDICATED ON THIS PLAN.
- DIMENSIONS TO EXISTING WALLS ARE TO FACE OF FINISH G.O.M.
- FLOORS NOT INDICATED ON ARCHITECTURAL DRAWINGS, SEE ARCHITECTURAL DRAWINGS FOR FINISH FLOORING, WALLS, AND ELECTRICAL. REFER TO STRUCTURAL DRAWINGS FOR LEVEL, OFFSETS, FINISHING REQUIREMENTS.
- THE WALLS AND PARTITIONS ARE TO BE CONSTRUCTED IN ACCORDANCE WITH THE REQUIREMENTS OF SECTION 05100.
- PROVIDE G.P.S. BAND CONTROLS... UNITS AT WALLS OVER 200" IN LENGTH.
- FRAME DOOR OPENINGS FROM FACE OF PERPENDICULAR WALL UNLESS NOTED OTHERWISE.
- PROVIDE DOUBLE 2x6 STUDS MIN. AT ALL DOOR JAMBS.
- REFER TO FINISH SCHEDULE AND INTERPENETRATION SELECTION PACKAGE FOR EXTENT OF ALL INTERPENETRATIONS.
- ALL GARAGE PARKING STRIPS AND NUMBERING WILL BE BY G.C.

KEYNOTES

- PRE-ENGINEERED AND CABINET, GSI REQUIRED
- ROOF DOWN WITH INTERNAL DRAINAGE CHASE, RE: MEP
- VENTILATION SHAWT, MOUNTED - OPEN BETWEEN FLOORS, RE: MEP
- NEW 4" X 10" IN STOREFRONT IN EXISTING EXTERIOR WALL PROVIDE STEEL Lintel
- CUT EXISTING CURB FOR ENLARGED OPENING, PROVIDE STEEL Lintel
- NEW TRIMLESS GLASS IN EXISTING DOOR OPENING, FIELD, TERRY
- NEW TRIMLESS GLASS IN EXISTING DOOR OPENING, PROVIDE HEADER IN NEW WALL ON STEEL Lintel IN EXISTING WALL, RE: DOOR SCHEDULE AND DETAIL, A100
- ADD SINKING CONTAINMENT BOTTLE FILLER, RE: PLUMBING
- GAZEBO WITH 4" GUSSET BOLTS, GUSSET, VERTICAL, AT STOREFRONT, PROVIDE ANCHORS WITH ANCHOR BOLT, RE: PLUMBING
- 4" GUSSET, RE: DETAIL, A100
- FRONT LOADING, 1/2" DIA. GUSSET BOLTS, RE: DETAIL, A100
- AMAZON REFRIGERATION, LODGE, IN TOWER
- CHIMNEY, FINISH TO TOP, WITH CHIMNEY CAP, LOOKMODE
- 6" F CONCRETE PARKING BLOCK
- REPLACE EXISTING WINDOW WITH STOREFRONT IN EXISTING OPENING (FIELD, TERRY)
- STAINLESS STEEL FLOOR MOP SINK WITH WALL MOUNTED FAUCET, RE: PLUMBING
- TY LOCATION CONTRACTOR TO PROVIDE EACH IN WALL AS RECO, INSTALL, CENTERED AT 7'0"



1 PARKING GARAGE
 (18'-5 1/2\"/>



115 S. Weber
Colorado Springs, Colorado 719-475-8133
YOW Architects PC
Architecture & Planning

MICRO APARTMENTS
125 N Pakside Drive Colorado
Springs CO 80909
Project Number
22.035
Issue No.
07/20/2022
Checked By
MKCS
YOW

A110
FLOOR PLAN 1ST FLOOR

FLOOR PLAN NOTES

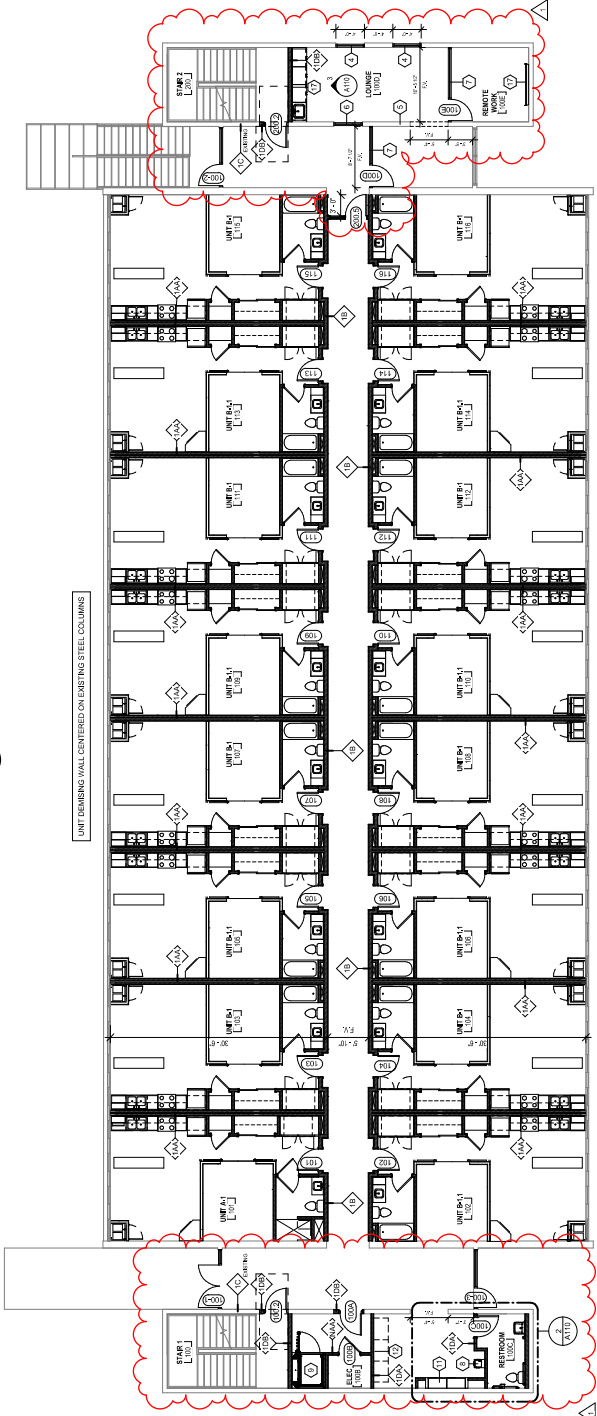
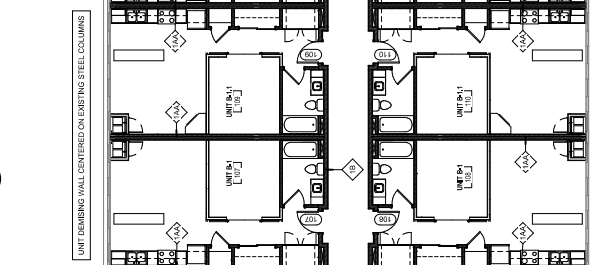
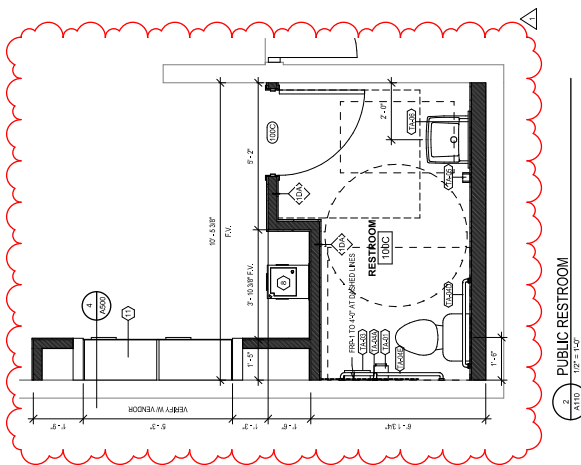
- DIMENSIONS INDICATED ARE FROM FACE OF STUDO AND TO FACE OF MASONRY UNLESS NOTED OTHERWISE. SEE ENLARGED FLOOR PLANS FOR ADDITIONAL DIMENSIONS NOT INDICATED ON THIS PLAN.
- DIMENSIONS TO CENTER UNLESS NOTED OTHERWISE.
- FLOORS NOT INDICATED ON ARCHITECTURAL DRAWINGS, RE: C.C., PLUMBING AND ELECTRICAL, REFER TO STRUCTURAL DRAWINGS FOR LIFELINE, OPENING REQUIREMENTS.
- SEE ARCHITECTURAL DRAWINGS FOR FINISHES AND MATERIALS. FINISHES AND MATERIALS ARE TO BE PROVIDED BY THE CONTRACTOR. REFER TO SPECIFICATIONS AND SECTION 9.00.
- PROVIDE OPT. BOARD CONTROL JOINTS AT WALLS OVER 24" IN LENGTH.
- FRAME DOOR OPENINGS FROM FACE OF PERPENDICULAR WALL UNLESS NOTED OTHERWISE.
- PROVIDE DOUBLE 2x4 GA. STUDS MIN. AT ALL DOOR JAMBS.
- REFER TO FINISH SCHEDULE AND INTERIOR DESIGNER'S SELECTION PACKAGE FOR EXTENT OF ALL INTERIOR FINISHES.
- ALL GARAGE FINISHES AND NUMBERING WILL BE BY G.C.

KEYNOTES

- PRE-CAST CONCRETE AND CONCRETE, UNREINFORCED
- ROOF JOIST WITH INSULATION DAMAGE CHASE, RE: MEP
- VENTILATION SHIRT, DOMINANT - OPEN BETWEEN FLOORS, RE: MEP
- NEW 4" X 8" IF FORMER FOR FINISHING EXTERIOR WALL, PROVIDE STEEL LINTEL
- CUT EXISTING WALL FOR ENLARGED OPENING, PROVIDE STEEL LINTEL
- NEW TRIMLESS GLASS IN EXISTING DOOR OPENING, FIELD VERTICAL
- NEW TRIMLESS GLASS IN EXISTING DOOR OPENING, FIELD VERTICAL IN EXISTING WALL, RE: DOOR SCHEDULE AND DETAIL 1000
- 4x8 OPENING FOURTH WITH BOTTLE FILLER, RE: PLUMBING
- CONCRETE JOIST ENCASEMENT, 4" MIN. THICK, 4" MIN. SPACING
- 4" X 8" GLASS, RE: DETAIL 8000
- FRONT LOADING WHEELBOYS STANDING 6", RE: DETAIL 4000
- AMAZONIA BARRIERS CODED BY OWNER
- CHUNKY FENCE TO PAY WITH CHUNKY GATE LOCKABLE
- 6" X 7" CONCRETE FINISH BLOCK
- REPLACE EXISTING WINDOW WITH EXPOSED FRONT IN EXISTING OPENING (FIELD VERIFY)
- STAINLESS STEEL FLOORSTOP 3/4" WITH WALL MOUNTED FACET, RE: PLUMBING
- TV LOCATION CONTRACTOR TO PROVIDE BACKING IN WALL AS REQ'D. INSTALL CENTERED AT 7'6"

TOILET ACCESSORIES SCHEDULE

ID#	ITEM DESCRIPTION	MANUFACTURER	MODEL #	FURNISHED BY	INSTALLED BY
1	TOILET PAPER DISPENSER	GOBROCK	S-2000	CONTRACTOR	CONTRACTOR
2	SMALL TOILET PAPER DISPENSER	GOBROCK	S-2075	CONTRACTOR	CONTRACTOR
3	2" X 4" TOILET BRUSH	GOBROCK	S-4000	CONTRACTOR	CONTRACTOR
4	2" X 4" TOILET BRUSH	GOBROCK	S-4000	CONTRACTOR	CONTRACTOR
5	2" X 4" TOILET BRUSH	GOBROCK	S-4000	CONTRACTOR	CONTRACTOR



Revision Schedule

NO.	DATE	DESCRIPTION
1	07/20/2022	ISSUED FOR PERMIT

