

EXHIBIT A

July 25, 2017
Revised: August 31, 2017

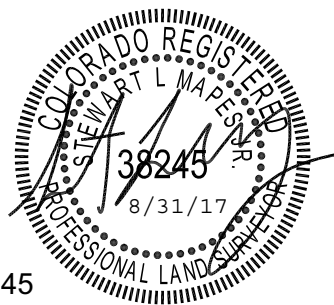
A portion of Northwest Quarter of Section 13, Township 14 South, Range 66 West of the 6th Principal Meridian, El Paso County, State of Colorado, being more particularly described as follows:

COMMENCING at the North Quarter Corner of said Section 13; thence along the West line of the Northwest Quarter of the Northeast Quarter S00°24'55"E (Bearings based on said West line, monumented at the North end by a No. 6 rebar with a 2 ½" aluminum cap marked "N ¼ WC 100.0' LS 32439" and at the South end by a No. 6 rebar with a 2 ½" aluminum cap marked "C N 1/16 LS 32439" and assumed to bear S00°24'55"E) a distance of 695.33 feet to the **POINT OF BEGINNING**; thence continuing along said West line S00°24'55"E a distance of 428.07 feet; thence leaving said West line along the following thirteen (13) courses:

1. S43°02'24"W, a distance of 277.64 feet;
2. S46°53'57"W, a distance of 247.95 feet;
3. S39°01'05"W, a distance of 310.23 feet;
4. S21°57'56"W, a distance of 319.29 feet;
5. S00°21'17"W, a distance of 199.41 feet;
6. S12°02'03"W, a distance of 370.12 feet;
7. N86°50'23"W, a distance of 207.06 feet;
8. N03°27'03"E, a distance of 140.33 feet;
9. N00°31'47"E, a distance of 595.99 feet;
10. N36°10'49"E, a distance of 575.26 feet;
11. N26°05'55"E, a distance of 211.97 feet;
12. N42°51'46"E, a distance of 163.70 feet;
13. N47°21'32"E, a distance of 556.22 feet,

to the **POINT OF BEGINNING**.

Said parcel contains 560,477 S.F. or 12.867 acres, more or less.

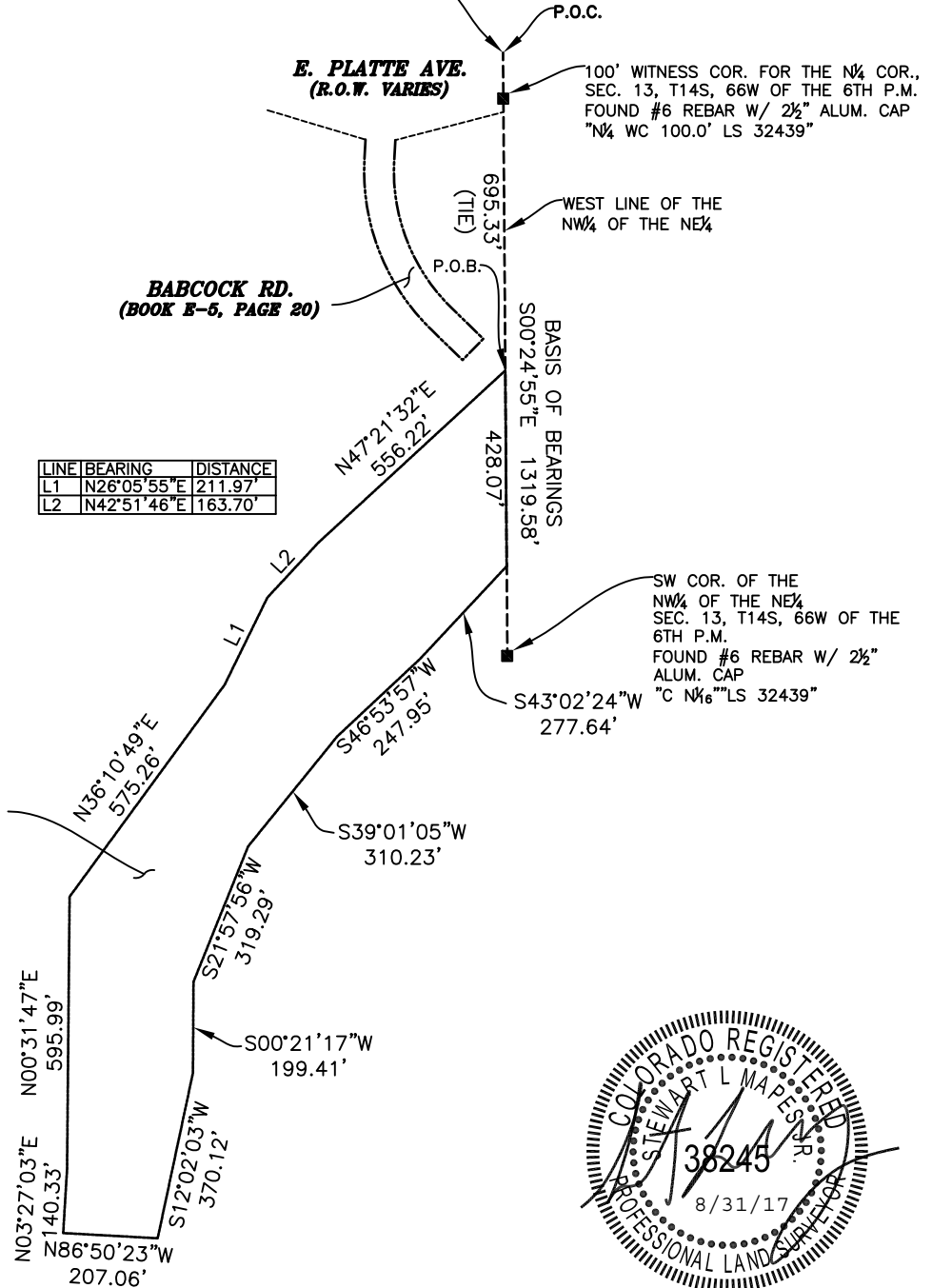


Stewart L. Mapes, Jr.
Colorado Professional Land Surveyor No. 38245
For and on behalf of Clark Land Surveying, Inc.

EXHIBIT B

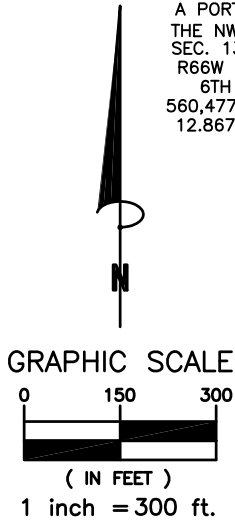
REVISED:
08/31/2017

N1/4 COR., SEC. 13, T14S, R66W OF THE 6TH P.M.



LINE	BEARING	DISTANCE
L1	N26°05'55"E	211.97'
L2	N42°51'46"E	163.70'

A PORTION OF THE NW 1/4 OF SEC. 13, T14S, R66W OF THE 6TH P.M. 560,477 SQ. FT. 12.867 ACRES



NOTE:
This EXHIBIT does not represent a monumented land survey, and is only intended to depict the attached LEGAL DESCRIPTION.



Project No: 160844	Drawn: ZAR Check: SLM	Date: 07/25/2017 Sheet 2 of 2
-----------------------	--------------------------	----------------------------------

www.clarkls.com
177 S. Tiffany Dr., Unit 1 • Pueblo West, CO 81007 • 719.582.1270