

# EVERGREEN RIDGE METROPOLITAN DISTRICT

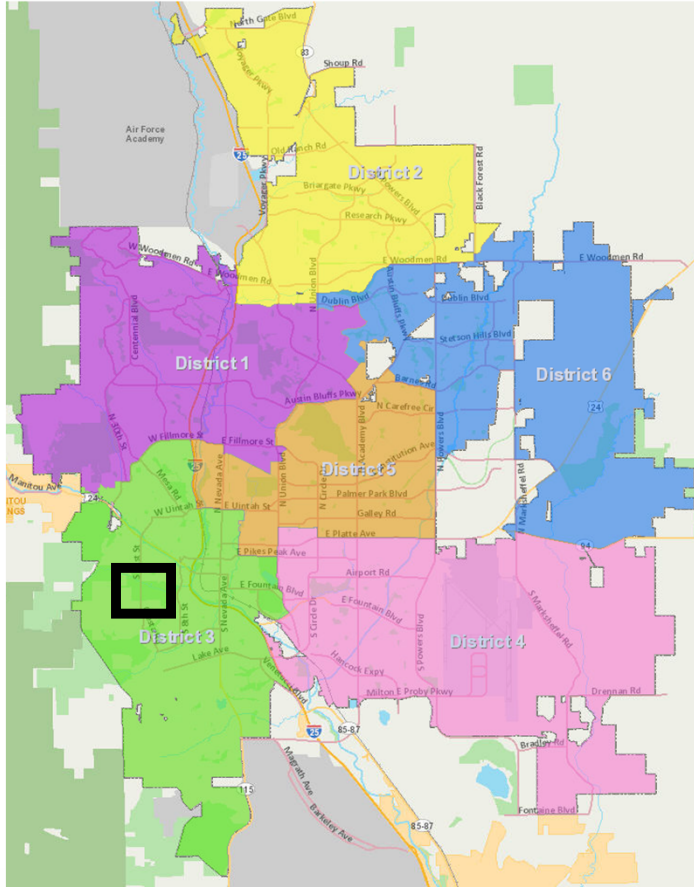


Dissolution of District

**Presenter:** Kevin Walker, Planning Department



# DISTRICT LOCATION



- South of Evergreen Cemetery. Adjacent to South 26<sup>th</sup> Street and Wheeler Avenue
- The District is located in City Council District #3

Evergreen Ridge Metropolitan District

# DISTRICT LOCATION & FEATURES



- District created in 2023
- The only landowner is the developer
- No debt issued or financial obligations
- Only O&M mill levy certified

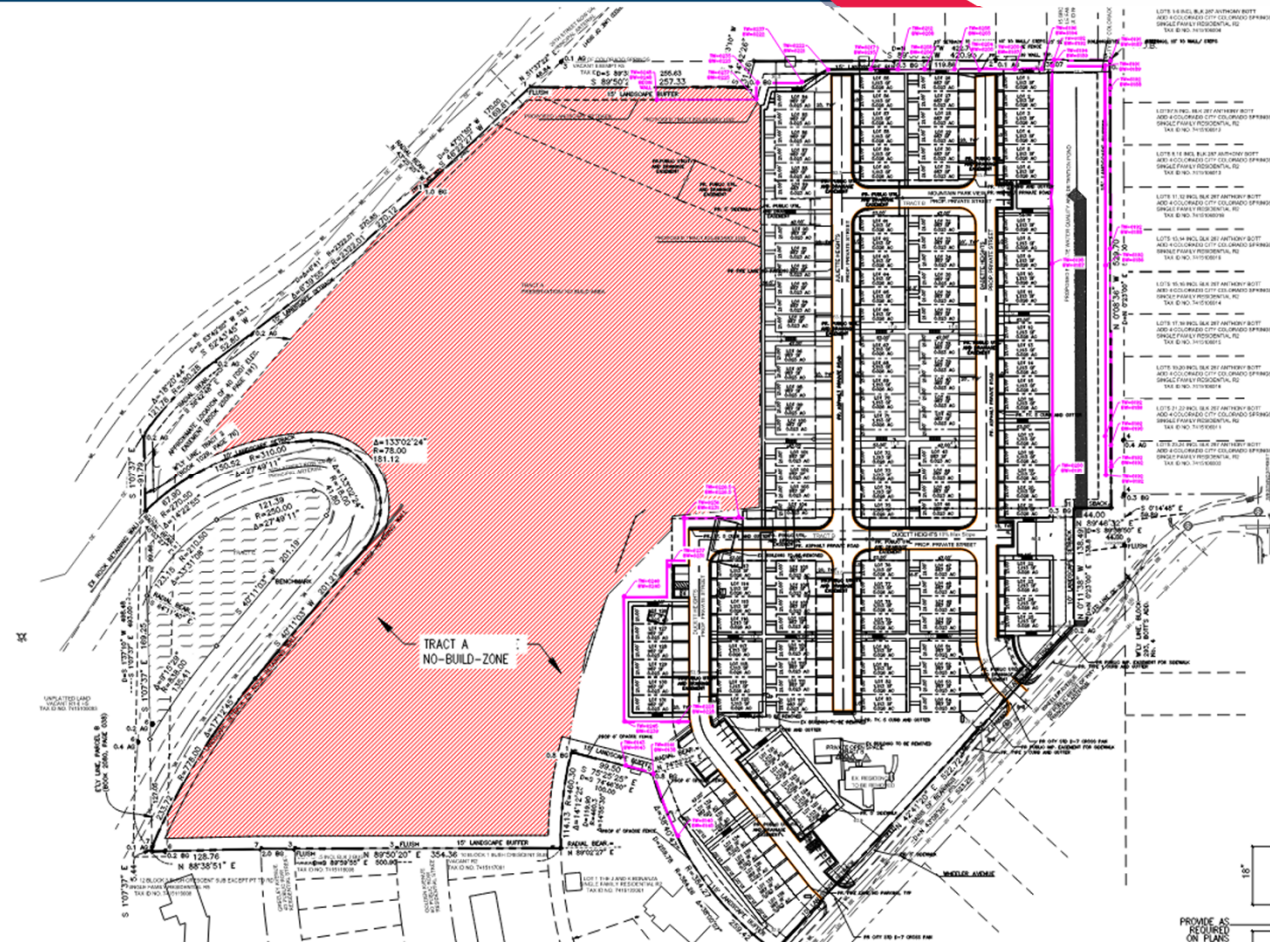


Evergreen Ridge Metropolitan District

# DEVELOPMENT OF SITE



- Twenty acres total
- Approx. ten acres in preservation area
- 138 townhome units
- Common areas owned by LGI Homes – Colorado LLC
- Developer to construct all public improvements previously to be financed by Metro District



# STATUTORY CRITERIA



Pursuant to Section 32-1-704(3)(b), to dissolve without an election, the District must:

- Must be wholly within the City
- Must hold no debt or retain any financial obligations
- Must not own any assets
- Must not be obligated to maintain any public improvements

# SUPPORTING MATERIALS

- Unsigned City Council Resolution
- District's Cover Memo
- Resolution of the Board of Directors
- Certified Financial Statement



# QUESTIONS

