

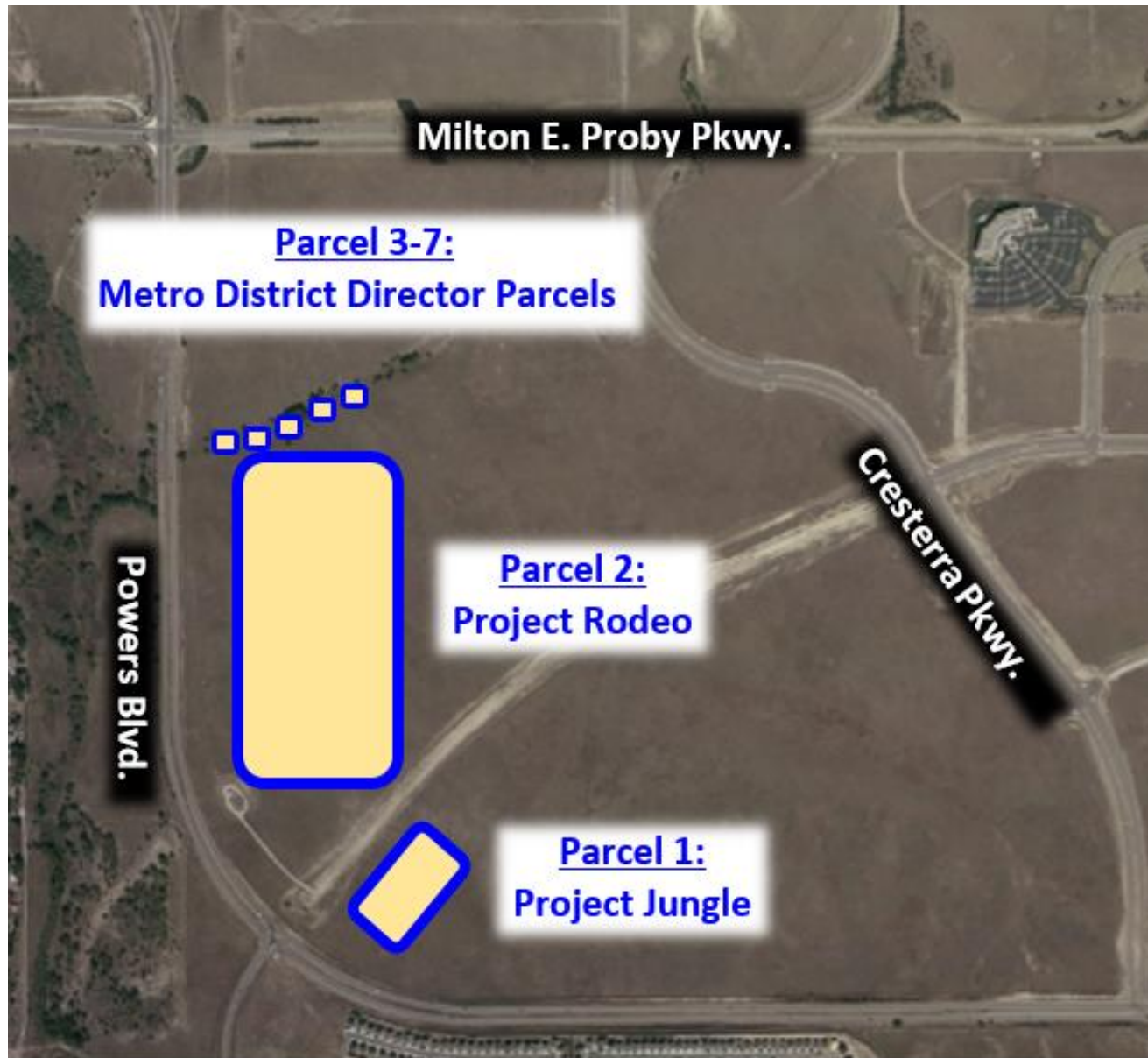


**COS AIRPORT
DISPOSAL OF SURPLUS PROPERTY
PROJECT JUNGLE, PROJECT RODEO, AND
5 DIRECTOR PARCELS**

COS Airport Land Release

- Seeking Council approval to sell property to one logical potential purchaser
- Sell seven (7) Parcels within Peak Innovation Park
 - Parcel 1: Project Jungle +/- 18 Acres
 - Parcel 2: Project Rodeo +/- 70 Acres
 - Parcels 3-7: Peak Metro District Director Parcels approx. 1/10th of one acre
- Appraisal in process to obtain fair market value
- Requires Federal Aviation Administration (FAA) approval

Project Jungle & Rodeo



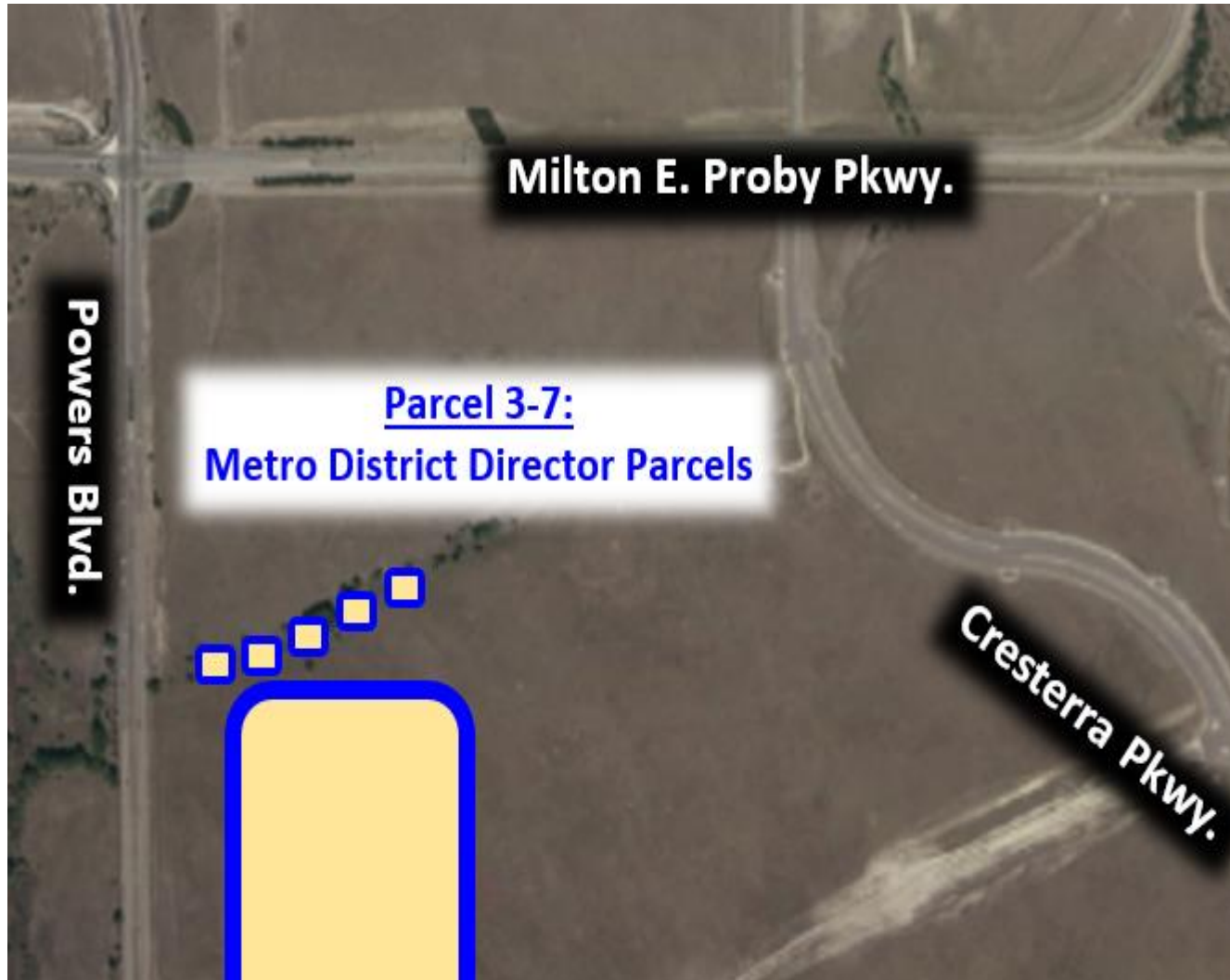
Project Jungle

- +/- 18 Acres
- Use: Local warehouse distribution facility
- Deed restrictions will require compatible airport land use

Project Rodeo

- +/- 70 Acres
- Use: Warehouse Distribution facility
- Deed restrictions will require compatible airport land use

Peak Metro District – Parcels 3 to 7



- Five (5) Director Parcels “Seats”
- 1/10th of one acre size
- Located within Drainage Basin so parcels will not encumber future land development
- Compatible airport land use
- Deed Restrictions will be placed on parcels

Economic Impact for the Community

- Significant job creation
- Anchor user of Peak Innovation Park
- Long term economic value and sustainability for airport
- Diversification of airport revenue
- Synergy of future development
- Excellent compatible land use
- Increases the overall land value
- Long term viability

Airport opinion is that this development meets the one logical potential purchaser in accordance with City Code § 7.7.1804

Peak Metro District

- Future Council Action (does not impact today's request):
 - In order to finalize the formation of Peak Metro District, COS will be requesting City Council to review and potentially approve ten (10) additional Director Parcels in 1st Quarter of 2019.



QUESTIONS?

