

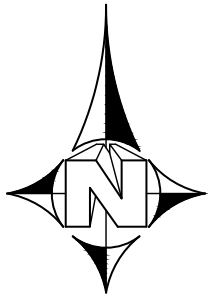
EXHIBIT A

EL PASO COUNTY PROJECT NUMBER 531209

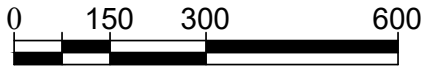
INTERGOVERNMENTAL AGREEMENT FOR PARK VISTA (SOUTH) SUBDIVISION

SITUATE

THE NORTHWEST QUARTER OF SECTION 26, TOWNSHIP 13 SOUTH, RANGE 66 WEST OF THE 6th P.M.
EL PASO COUNTY, COLORADO


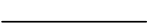

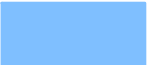



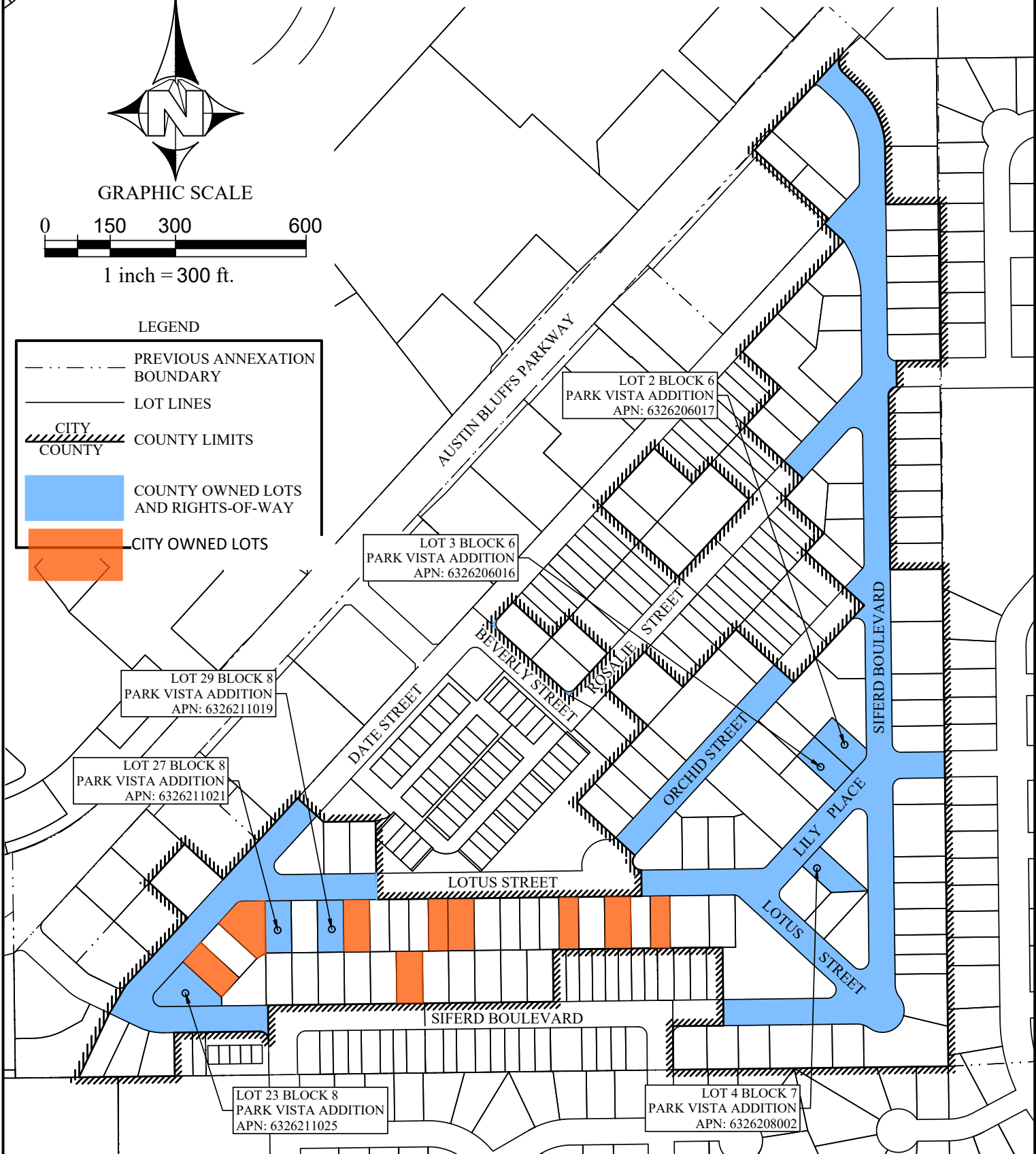
GRAPHIC SCALE



1 inch = 300 ft.

LEGEND

-  PREVIOUS ANNEXATION BOUNDARY
-  LOT LINES
-  CITY COUNTY COUNTY LIMITS
-  COUNTY OWNED LOTS AND RIGHTS-OF-WAY
-  CITY OWNED LOTS



SCALE: 1"=300'

DATE: 08/10/22

DRAWING: Date Street Annexation and QCD.dwg BY: MM

EL PASO COUNTY
DEPARTMENT OF PUBLIC WORKS