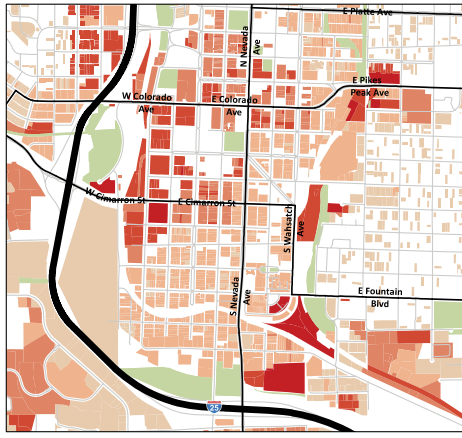
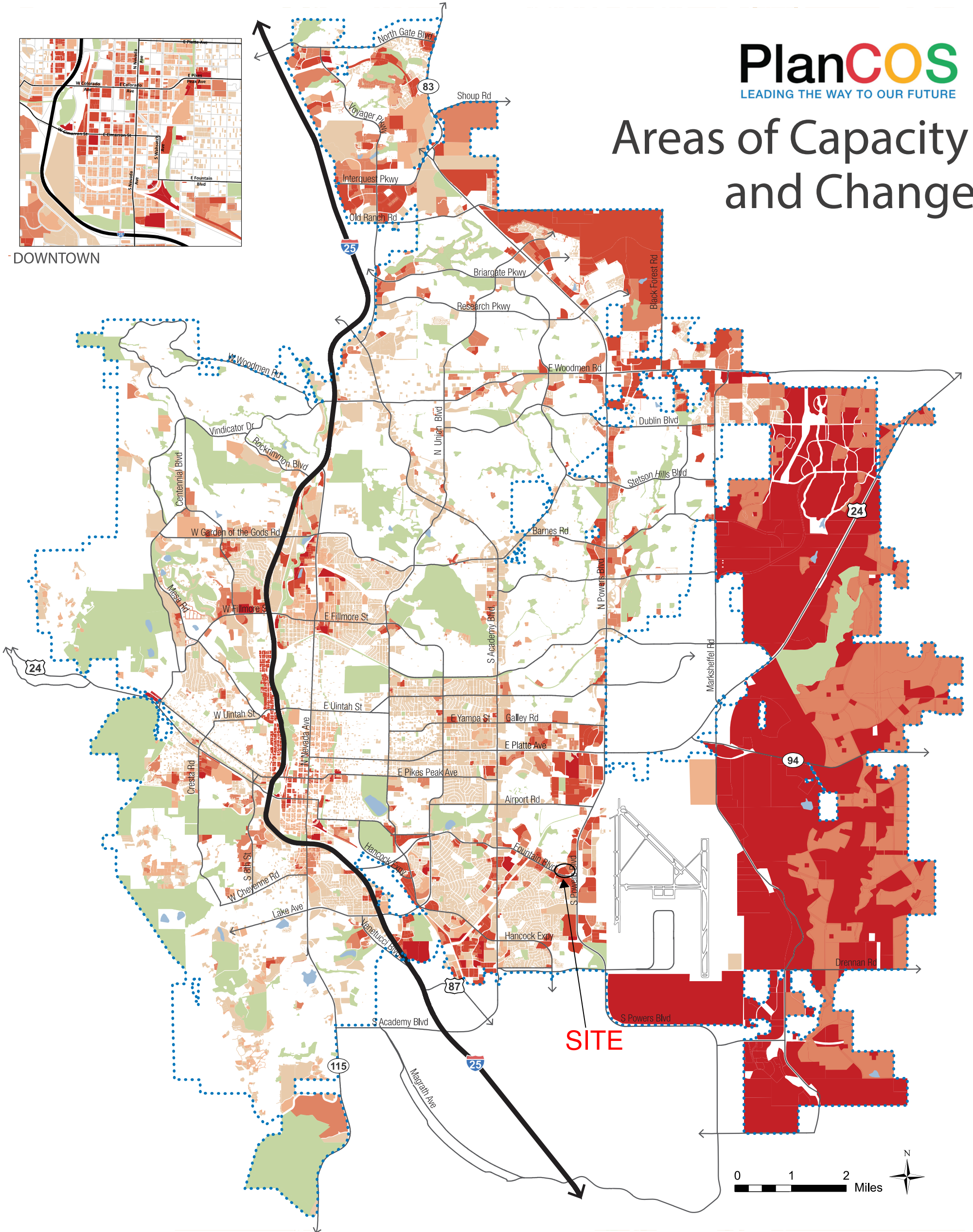


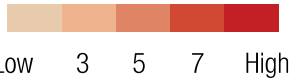
# Areas of Capacity and Change



DOWNTOWN



**Areas of Change**



City Boundary

Interstate 25

Major Roads

Parks

Waterbodies

This map is intended to provide a general identification of potential development changes across the city based on parcel level information. Elements considered in identifying the degree of change include zoning, development pressure, vacancy, and environmental constraints. A greater number of elements that could impact the development of a parcel results in a higher score. The parcels with a higher score are deeper red on the map. Change in development could include changing land uses, densification, or development of vacant areas.