



NBS, Inc.
619 N. Cascade Avenue, Suite 200
Colorado Springs, CO 80903
Tel: 719.471.0173
Fax: 719.471.0167
www.nbsinc.com
© 2012, All Rights Reserved.

TRAILSIDE AT COTTONWOOD CREEK

EAST WOODMEN ROAD
COLORADO SPRINGS, CO 80920

DATE: 08-06-2019
PROJECT NO: 19-00063
PREPARED BY: A. MADRIVAL

ENTITLEMENT

DATE:	08-06-2019
PROJECT NO:	19-00063
PREPARED BY:	A. MADRIVAL
CHECKED BY:	
APPROVED BY:	

PUD DEVELOPMENT PLAN

2 OF 10

CPC PUD 19-00063

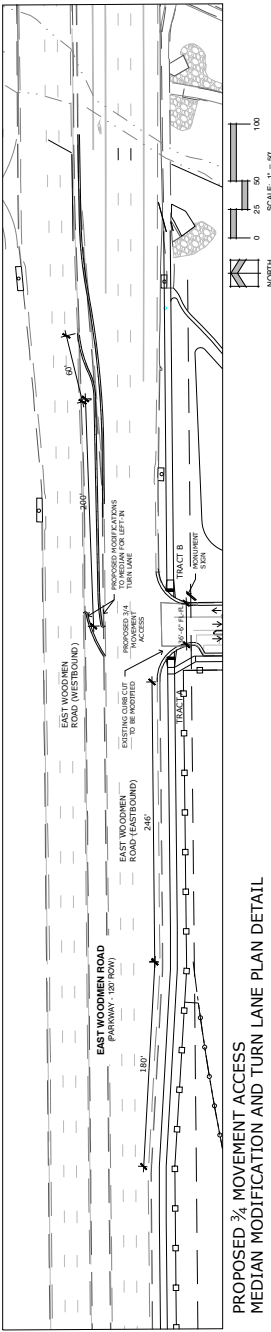
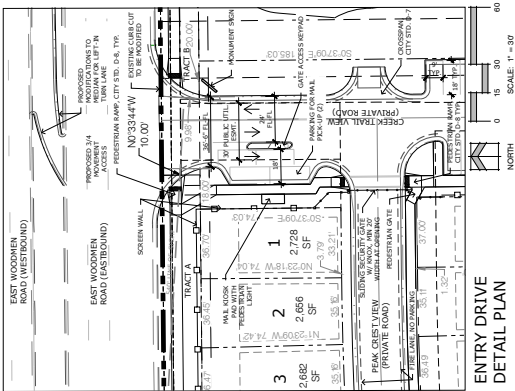
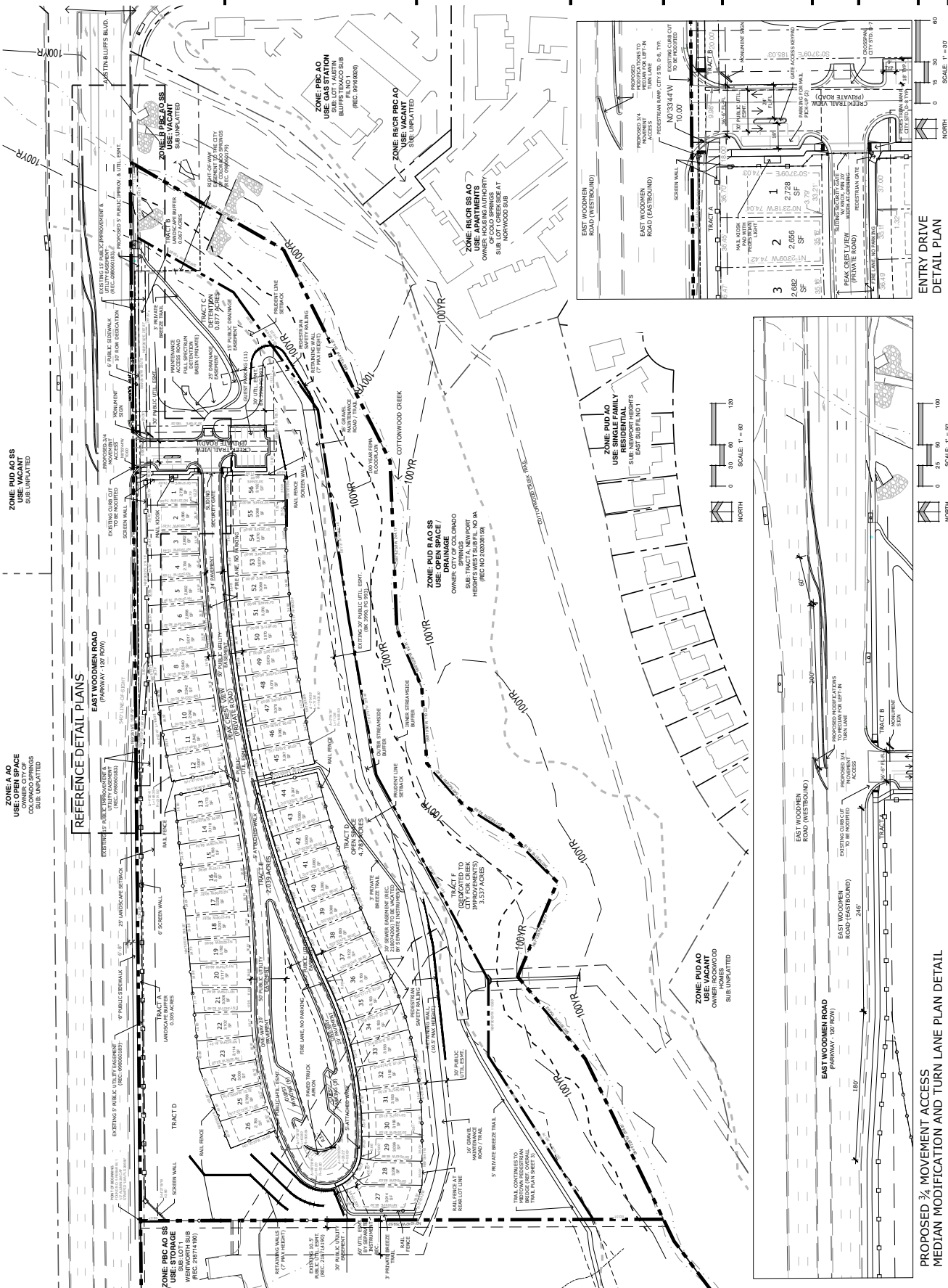


FIGURE 6



N.E.S. Inc.
619 N. Cascade Avenue, Suite 200
Colorado Springs, CO 80903
Tel: 719-471-0073
Fax: 719-471-0067
www.nesinc.com
© 2012, All Rights Reserved.

TRAILSIDE AT COTTONWOOD CREEK

EAST WOODMEN ROAD
COLORADO SPRINGS, CO 80920

DATE: 08-06-2019
DRAWN BY: J. HANCOCK
PREPARED BY: J. HANCOCK
SCALE: 1" = 100'

ENTITLEMENT

DATE	BY	DESCRIPTION
07-08-19	JHW	RECEIVED REVIEW COMMENTS

OVERALL TRAIL PLAN

3 OF 10
CPC PUD 19-00063

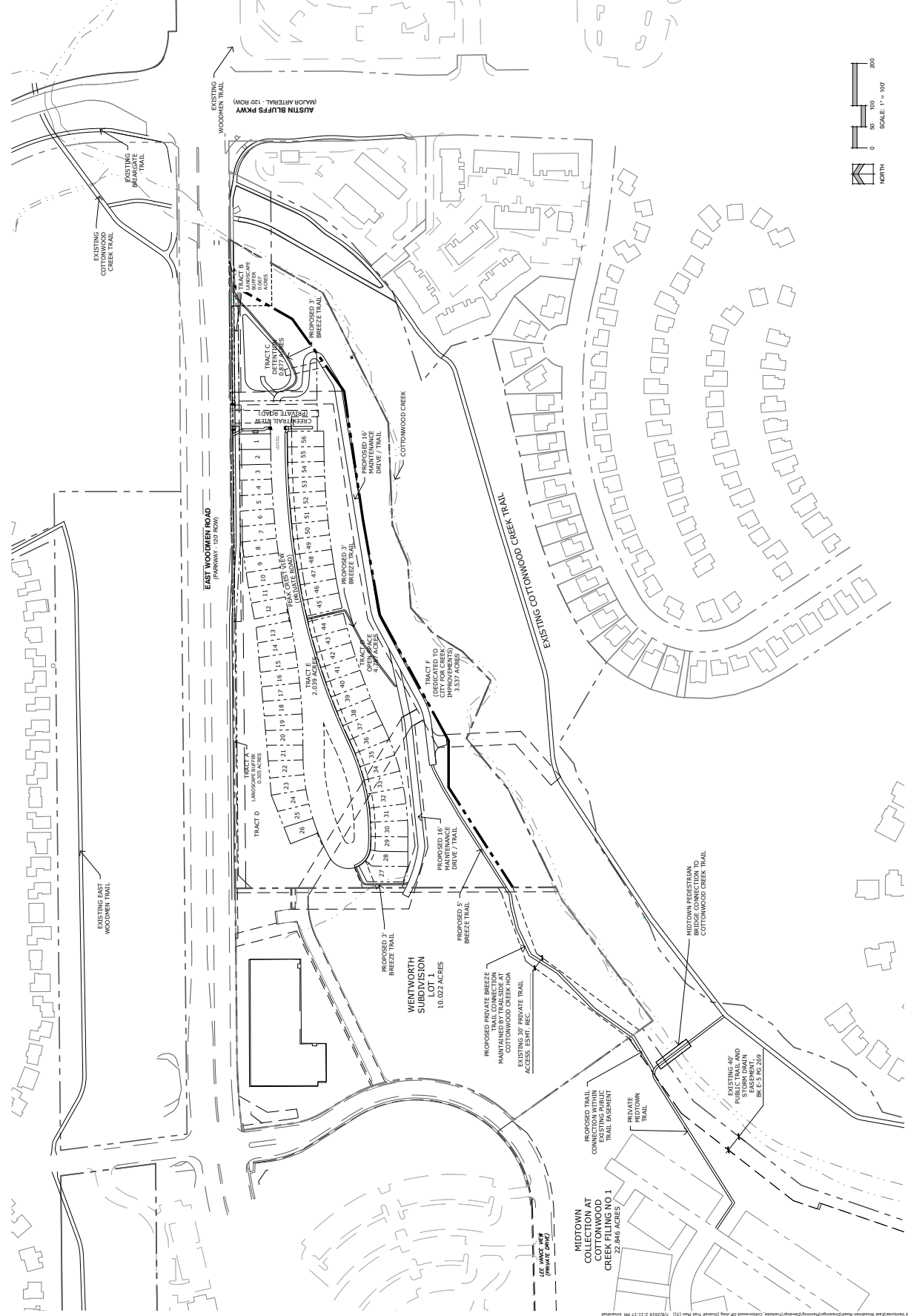


FIGURE 6

TRAILSIDE AT COTTONWOOD CREEK

EAST WOODMEN ROAD
COLORADO SPRINGS, CO 80910

DATE: 04-22-2019
PROJECT NO: 19-00063
PREPARED BY: A. HANCOCK

ENTITLEMENT

DATE	BY	DESCRIPTION
07/08/19	ANW	RECEIVE REVIEW COMMENTS

PRELIMINARY
LANDSCAPE PLAN

6 OF 10
CPC PUD 19-00063

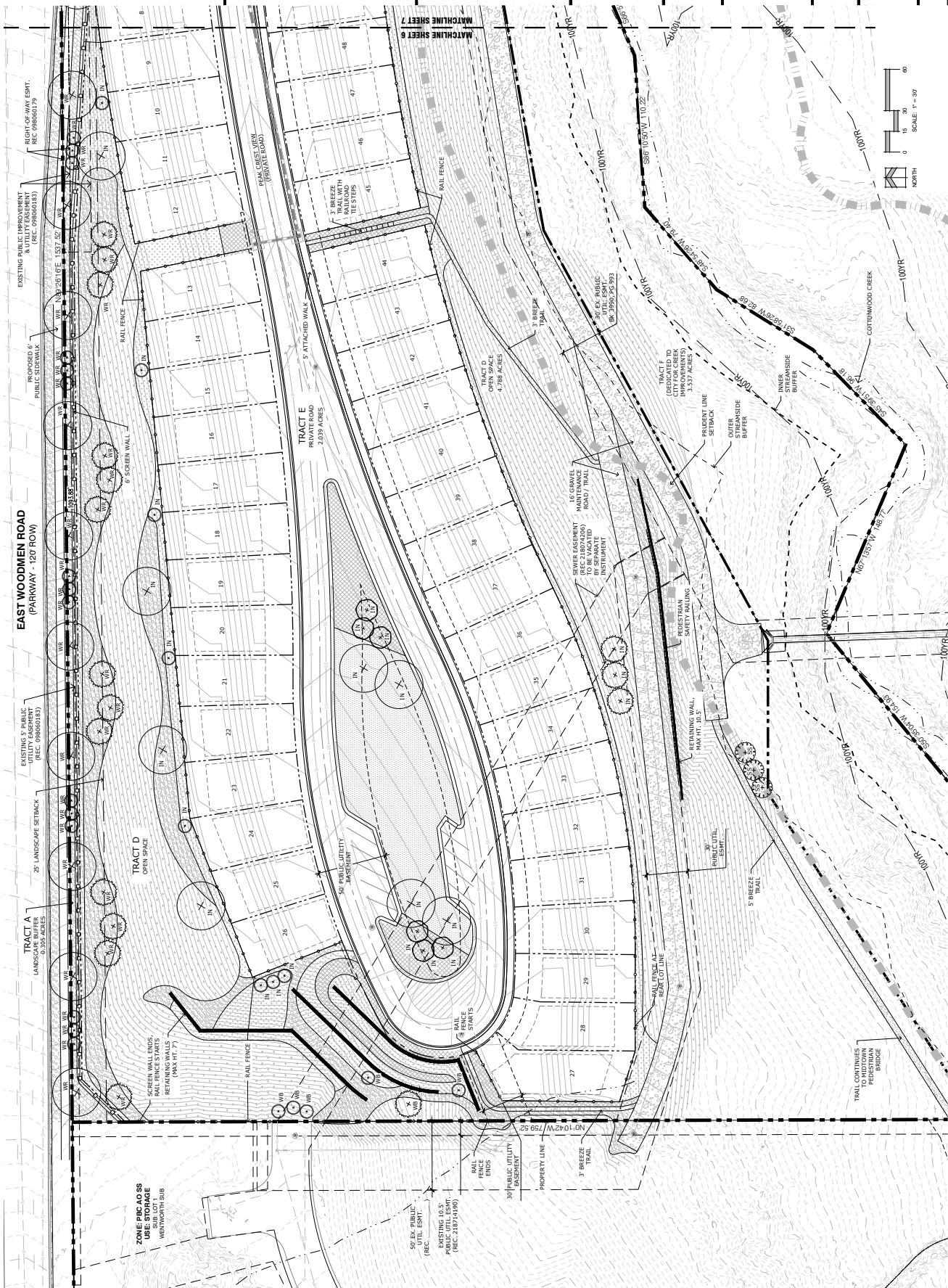


FIGURE 6



N.E.S. Inc.
619 N. Cascade Avenue, Suite 200
Colorado Springs, CO 80903
Tel: 719.471.0073
Fax: 719.471.0067
www.nesinc.com
© 2015, All Rights Reserved.

TRAILSIDE AT COTTONWOOD CREEK

EAST WOODMEN ROAD
COLORADO SPRINGS, CO 80920

DATE: 04-22-2015
DESIGNED BY: [Name]
PREPARED BY: [Name]
SCALE: 1" = 30'

ENTITLEMENT

DATE:	04-22-2015
REVISION:	
BY:	
CHKD BY:	
APP'D BY:	
DATE:	
REVISION:	
BY:	
CHKD BY:	
APP'D BY:	

PRELIMINARY LANDSCAPE PLAN

7 OF 10
CPC PUD 19-00063

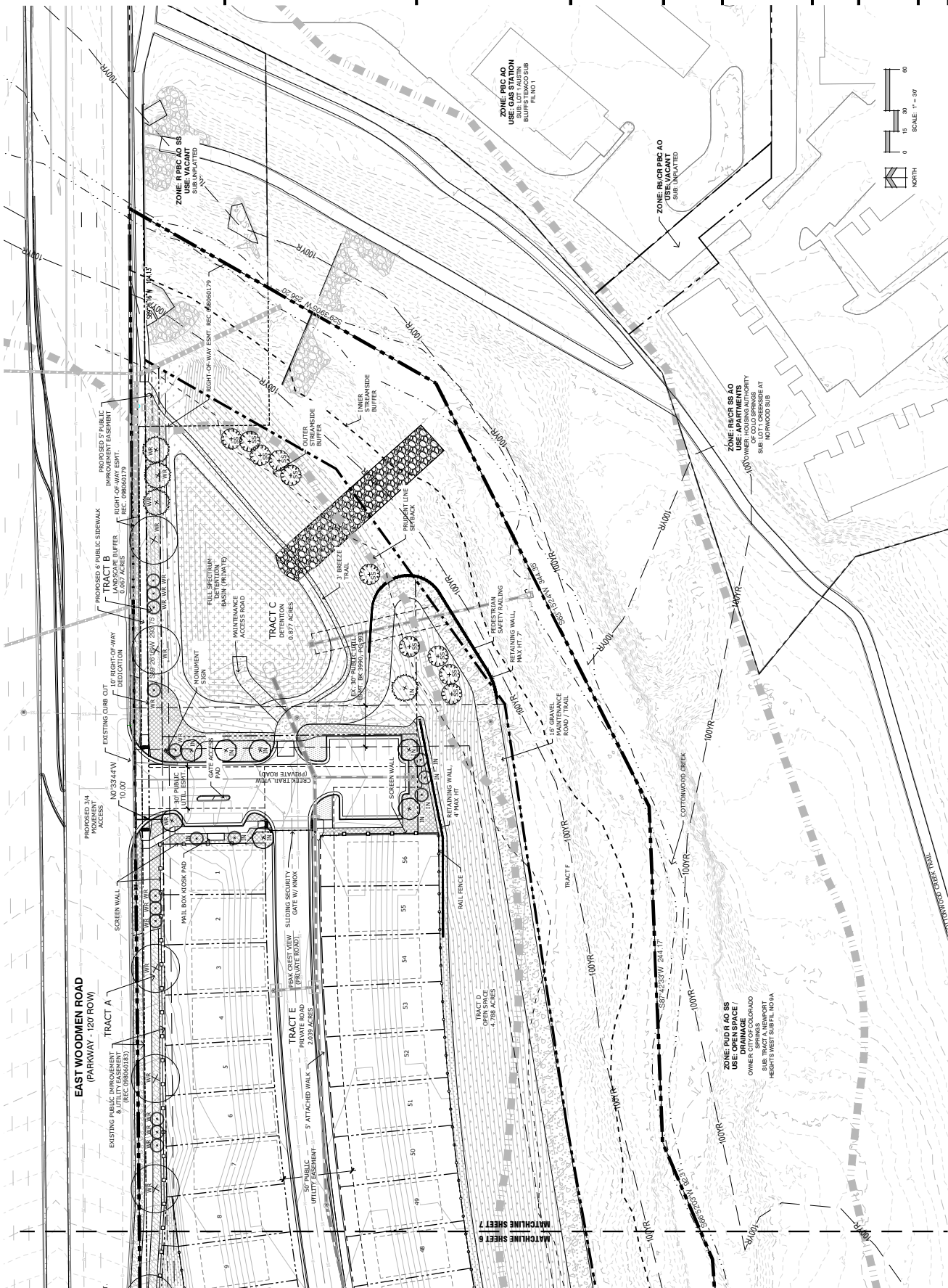
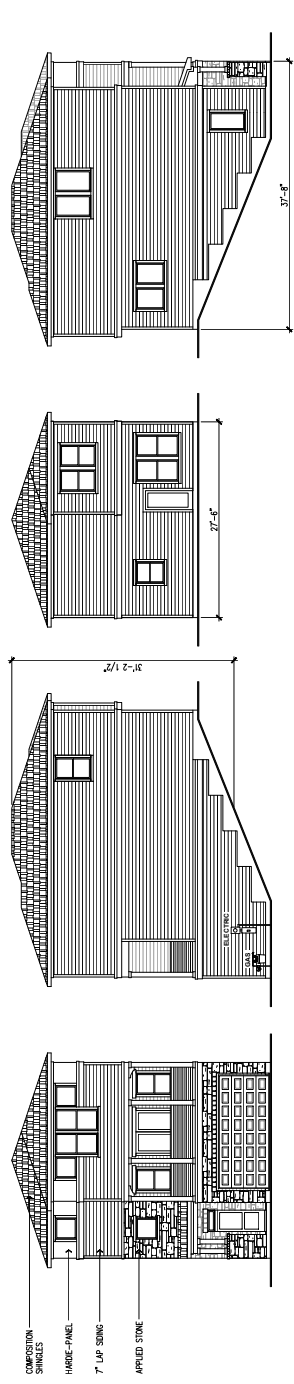
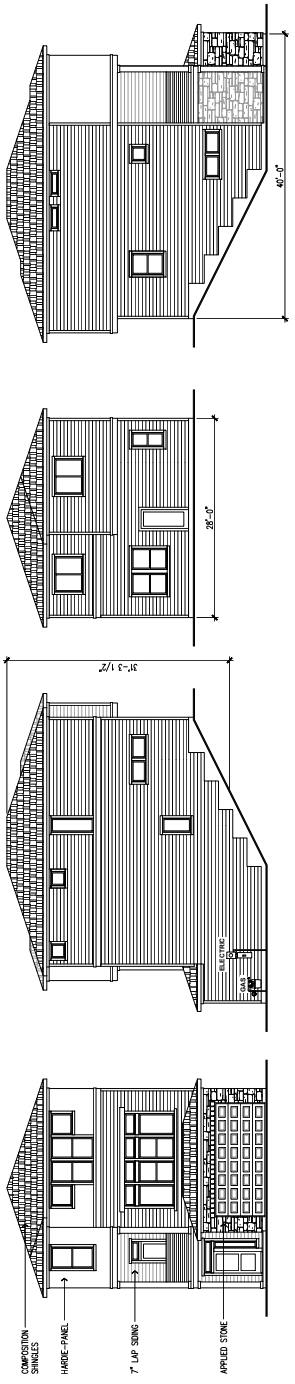


FIGURE 6

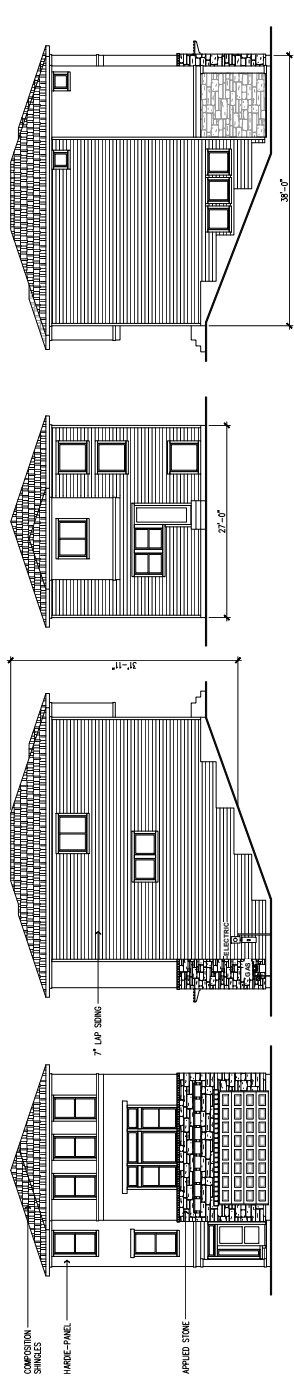


Alpine - H505
SCALE: 1/8" = 1'-0"

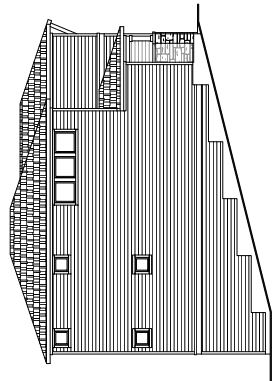


Bryanwood - H506
SCALE: 1/8" = 1'-0"

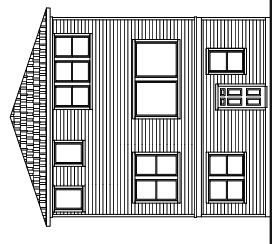
ELEVATIONS SHOWN ARE CONCEPTUAL ONLY AND ARE PROVIDED TO ILLUSTRATE EXTERIOR MATERIALS AND FINISHES. THESE ELEVATIONS DO NOT REPRESENT THE FINAL DESIGN. THE ARCHITECT ASSUMES THE CLIENT WILL PROVIDE THE ELEVATIONS AND UNIT TYPES WITHOUT THE NEED TO RESUBMIT A DEVELOPMENT PLAN.



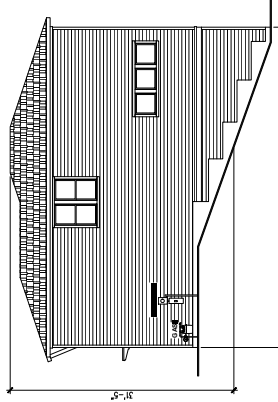
Cherry Oak - H507
SCALE: 1/8" = 1'-0"



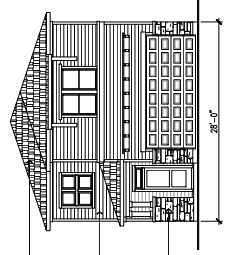
LEFT ELEVATION



BACK ELEVATION

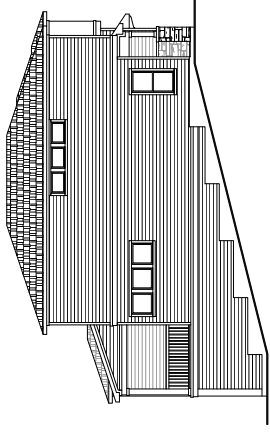


RIGHT ELEVATION

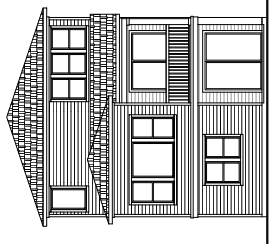


Deerfield — H508
SCALE: 1/8" = 1'-0"

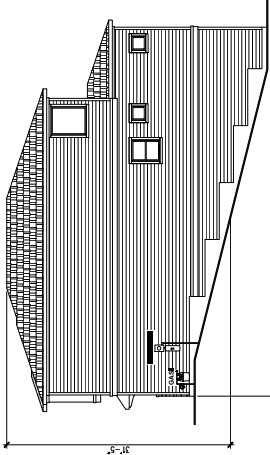
- COMPOSITION SHINGLES
- 7" LAP SIDING
- APPLIED STONE



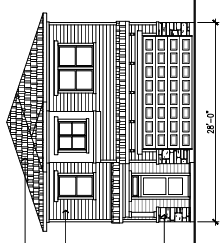
LEFT ELEVATION



BACK ELEVATION



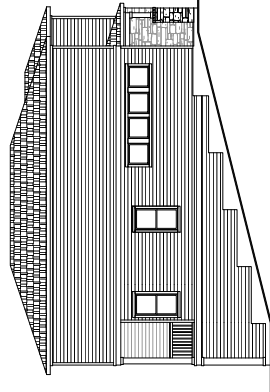
RIGHT ELEVATION



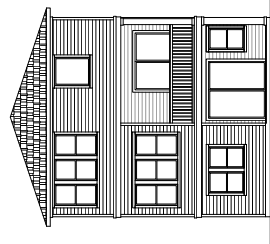
Ethridge — H509
SCALE: 1/8" = 1'-0"

- COMPOSITION SHINGLES
- 7" LAP SIDING
- APPLIED STONE

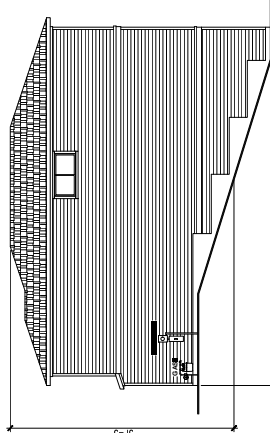
ELEVATIONS SHOWN ARE CONCEPTUAL ONLY AND ARE PROVIDED TO ILLUSTRATE EXTERIOR MATERIALS AND FINISHES. THE ARCHITECT DOES NOT WARRANT OR GUARANTEE THE ACCURACY OF THE INFORMATION PROVIDED HEREIN. THE ARCHITECT SHALL NOT BE RESPONSIBLE FOR ANY ERRORS OR OMISSIONS IN THESE ELEVATIONS AND UNIT TYPES WITHOUT THE NEED TO RESUBMIT A DEVELOPMENT PLAN.



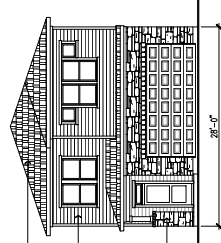
LEFT ELEVATION



BACK ELEVATION



RIGHT ELEVATION



Fairview — H510
SCALE: 1/8" = 1'-0"

- COMPOSITION SHINGLES
- 7" LAP SIDING
- APPLIED STONE