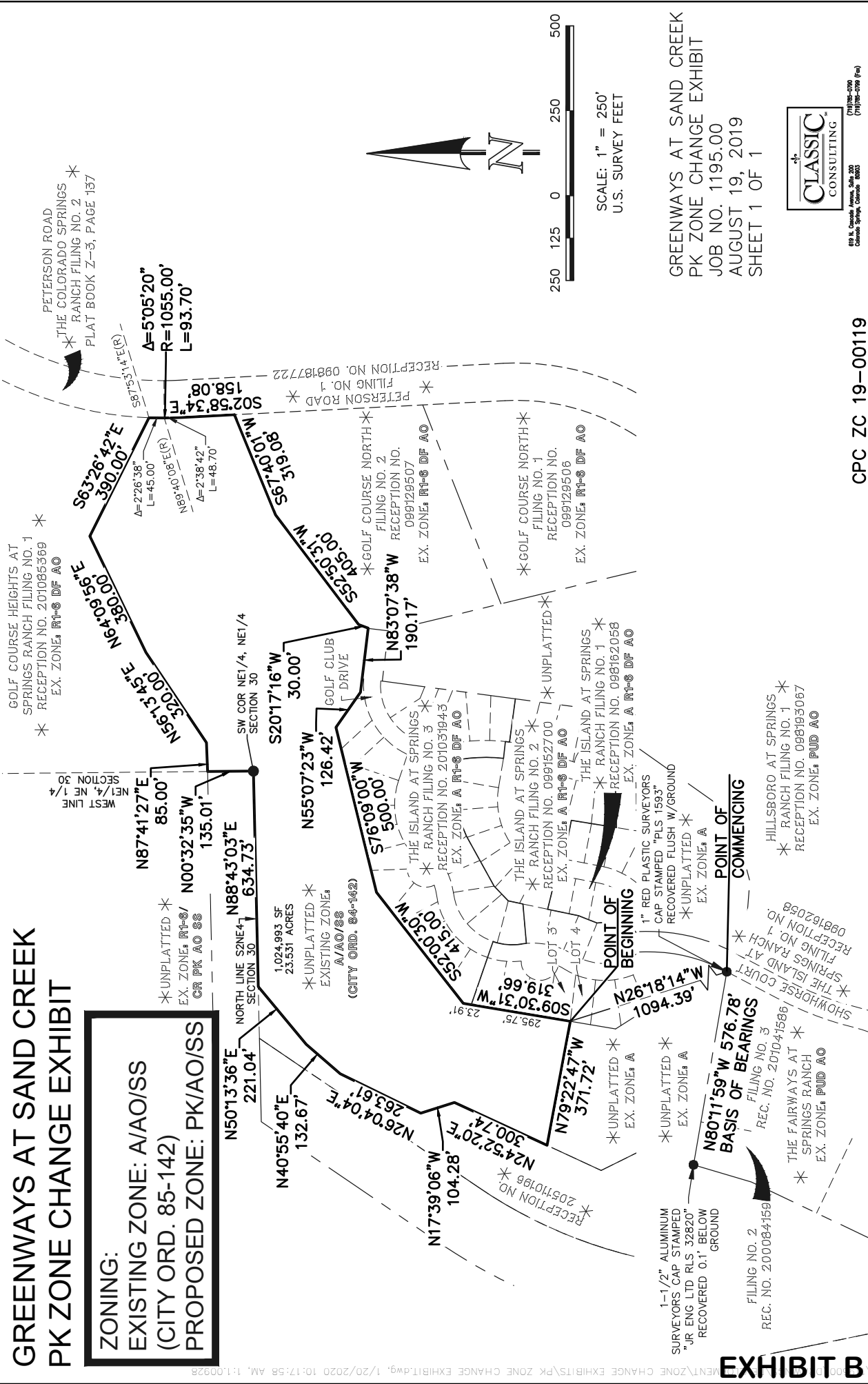


# GREENWAYS AT SAND CREEK PK ZONE CHANGE EXHIBIT

**ZONING:**  
**EXISTING ZONE: A/AO/SS**  
**(CITY ORD. 85-142)**  
**PROPOSED ZONE: PK/AO/SS**



SCALE: 1" = 250'  
 U.S. SURVEY FEET

GREENWAYS AT SAND CREEK  
 PK ZONE CHANGE EXHIBIT  
 JOB NO. 1195.00  
 AUGUST 19, 2019  
 SHEET 1 OF 1



89 N. Cascade Avenue, Suite 200  
 Colorado Springs, Colorado 80903  
 (719) 595-0700  
 (719) 595-0709 (Fax)

CPC ZC 19-00119

**EXHIBIT B**