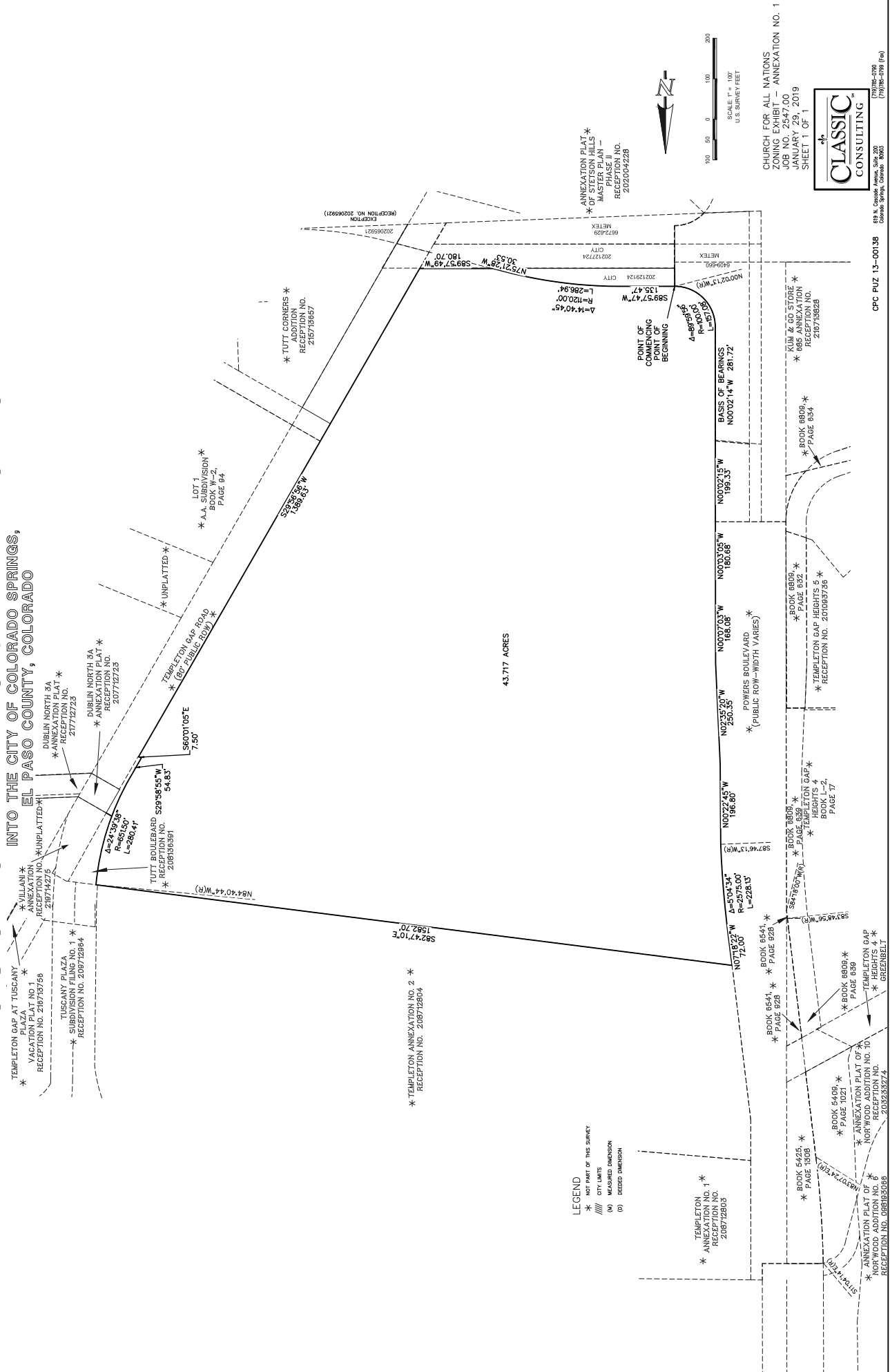


# ZONING EXHIBIT CHURCH FOR ALL NATIONS ANNEXATION NO. 1 INTO THE CITY OF COLORADO SPRINGS, EL PASO COUNTY, COLORADO



**EXHIBIT B**

  
 CLASSIC CONSULTING

CHURCH FOR ALL NATIONS  
 ANNEXATION NO. 1  
 JOB NO. 2947.00  
 JANUARY 29, 2019  
 SHEET 1 OF 1

618 N. Cascade Avenue, Suite 200  
 Colorado Springs, Colorado 80901  
 (719) 596-0798 (FAX)

CFC PLZ 13-00138