

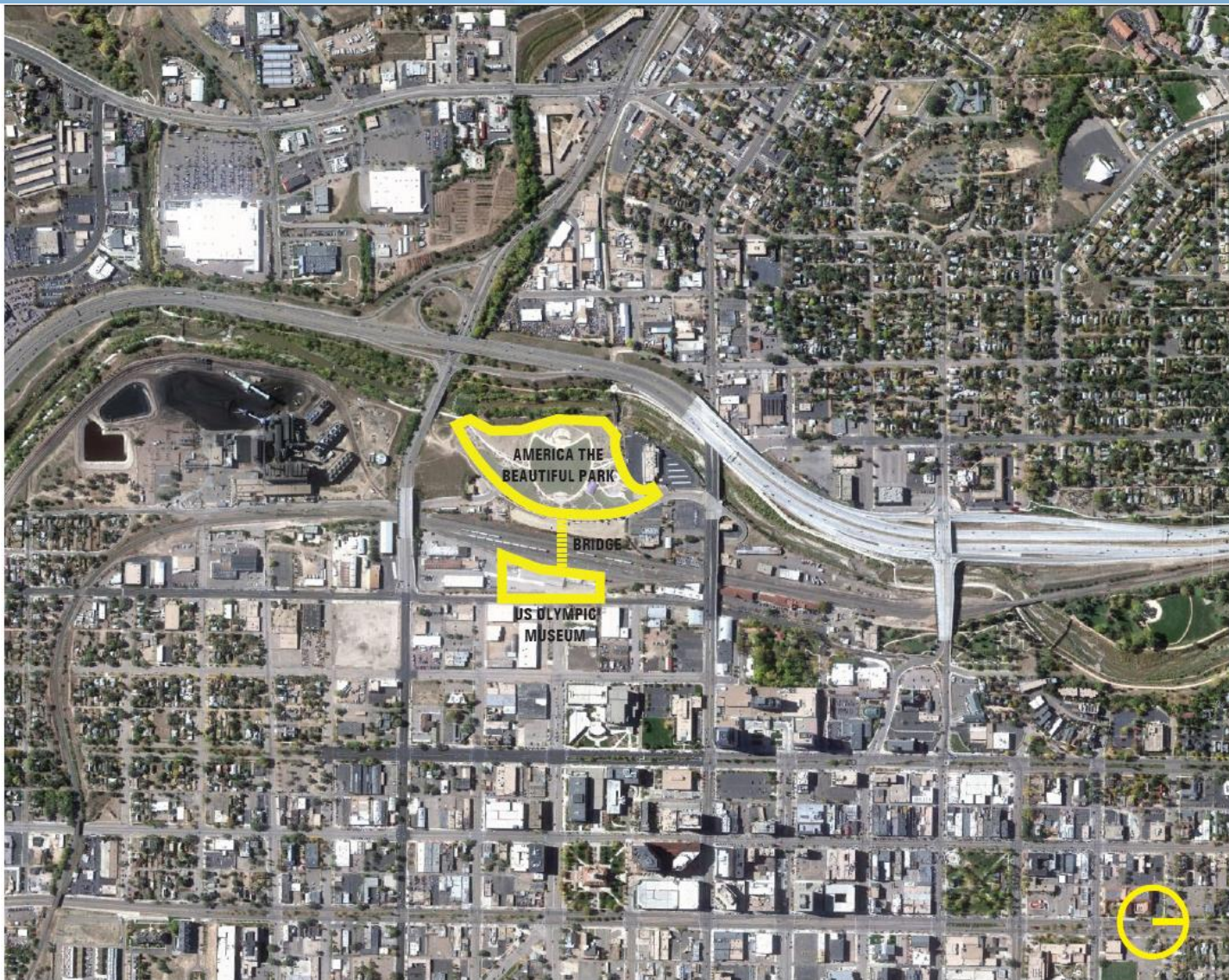
# Pedestrian Bridge at Vermijo Avenue

Kathleen Krager  
June 13, 2016





RIP CURL SCHEME VIEW FROM INTERSTATE



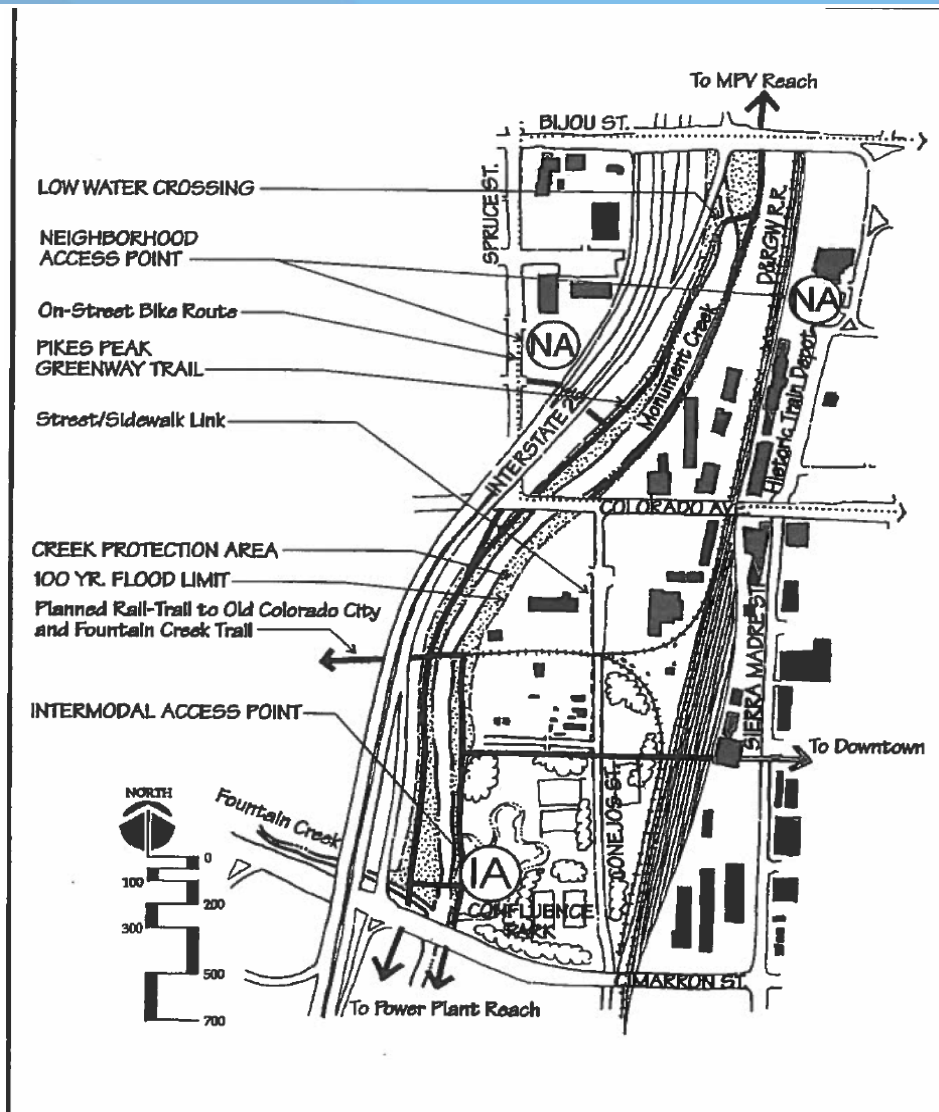
# The Downtown Action Plan -1992-



Proposes pedestrian crossing of the  
railroad at Vermijo Avenue

# Pikes Peak Greenway Master Plan

## -June 1994-



# ULI Advisory Services Panel Report

## -June 2012-



ULI strongly supports "an iconic footbridge connecting the park (ATB) to downtown."

# PPRTA II Capital Projects -November 2012-



Approved by voters including  
\$1.1 million for a pedestrian bridge at  
Vermijo Avenue alignment.

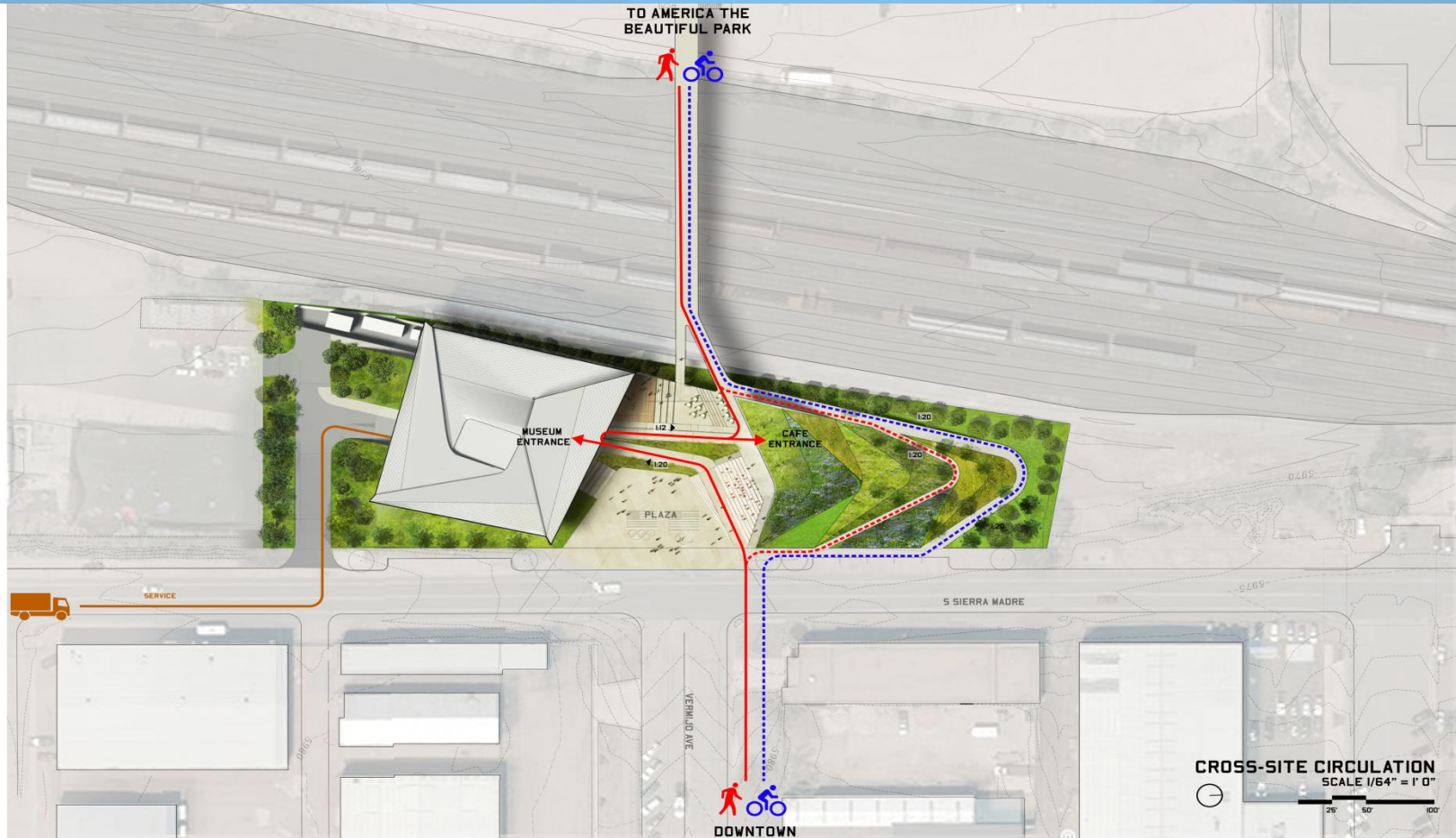
# Olympic Museum Site Selection -2012-



A site is selected for the Olympic Museum at Sierra Madre Street and Vermijo Avenue. The Museum Pedestrian Plaza is planned to tie into the Pedestrian Bridge.



# Olympic Museum Site Plan



# Formation of SW Downtown Redevelopment Planning Team -August 2015-



- Pedestrian/Bike/Vehicular Access
- Parking Needs
- Land Use Opportunities
- Funding Needs

# SW Downtown Planning Team



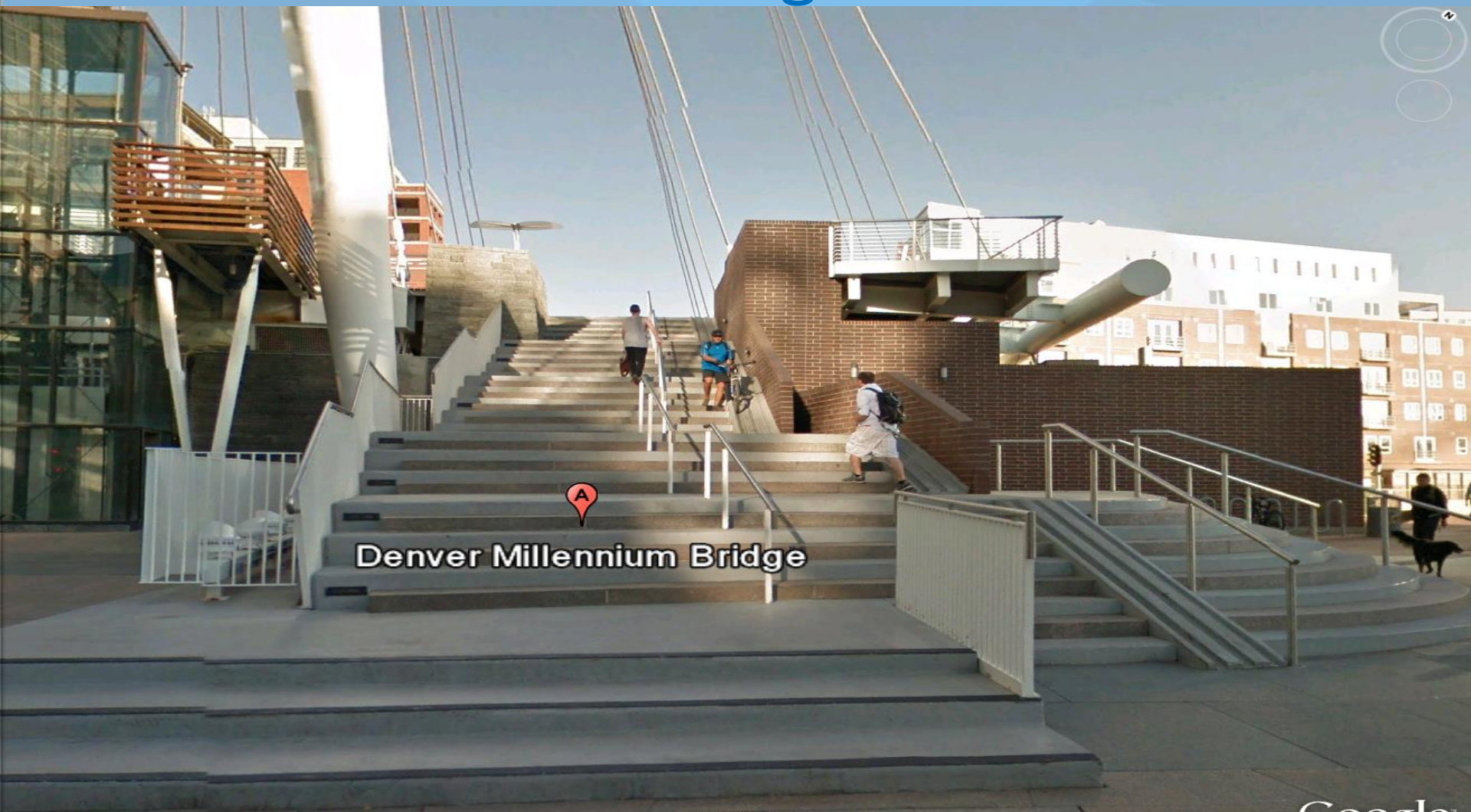
- Membership
  - Downtown Partnership
  - Master Developer
  - Olympic Museum
  - City Staff: Public Works, Planning, Economic Development, Parking Enterprise, Parks, Finance, Mayors Office
- Meeting 2-4 times per month since summer of 2015

# Criteria for Pedestrian Bridge



- ADA Compliant
- Provide a safe place for pedestrians and families
- Allow bikes with dismount
- Integrate with Olympic Museum Site
- Allow for possible integration with west landing developments

# Denver Millennium Bridge South Landing



Denver Millennium Bridge

© 2016 Google

©2010 Google

[Report a problem](#)

© 2016 Google

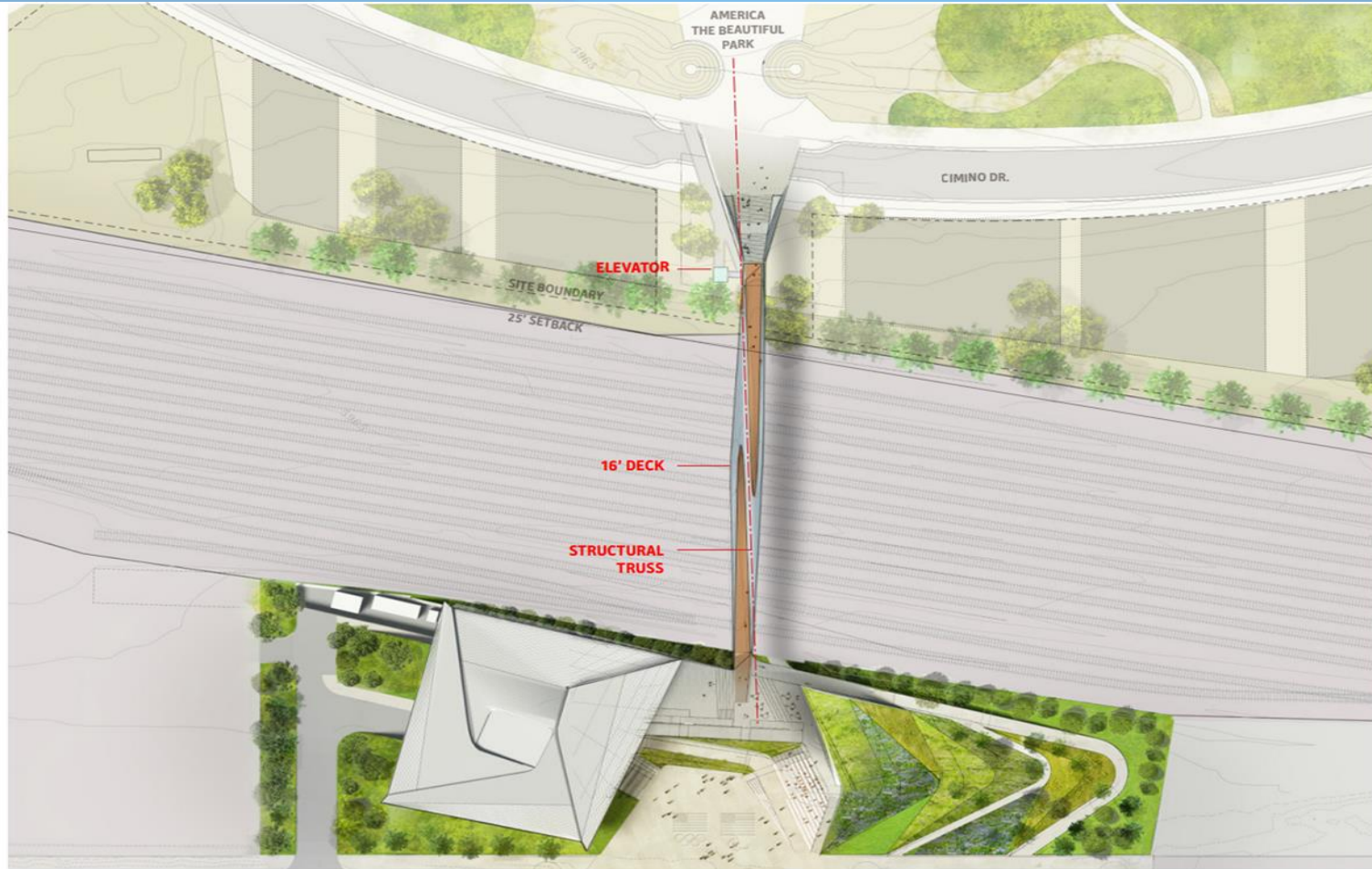
39°45'16.04" N 105°00'16.53" W elev 5329 ft

Eye alt 5204 ft

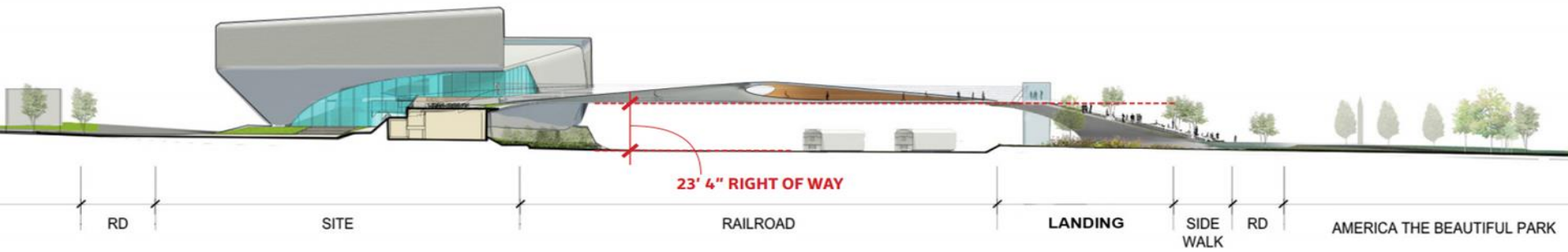
# Denver Millennium Bridge North Landing



Denver Millennium Bridge



RIP CURL SCHEME SITE PLAN



RIP CURL SCHEME SITE ELEVATION





RIP CURL SCHEME DETAIL VIEW

# East Side Landing



- Incorporate landing into Pedestrian Plaza for Olympic Museum
- Ramps to be used by ADA and slow moving bikes
- Areas available for various activities

# West Side Landing



- Access for ADA and Bikes via elevators
- Stairs will include bike channels
- Reach ground level east of Cimino Drive
- Option to provide access to adjacent buildings

# Ownership at West Landing



- Land between Railroad and Park currently owned by City (non-park land)
- Land is environmentally contaminated
- City Council has previously committed to contribute this land to URA master developer
- Developer willing to do a land exchange

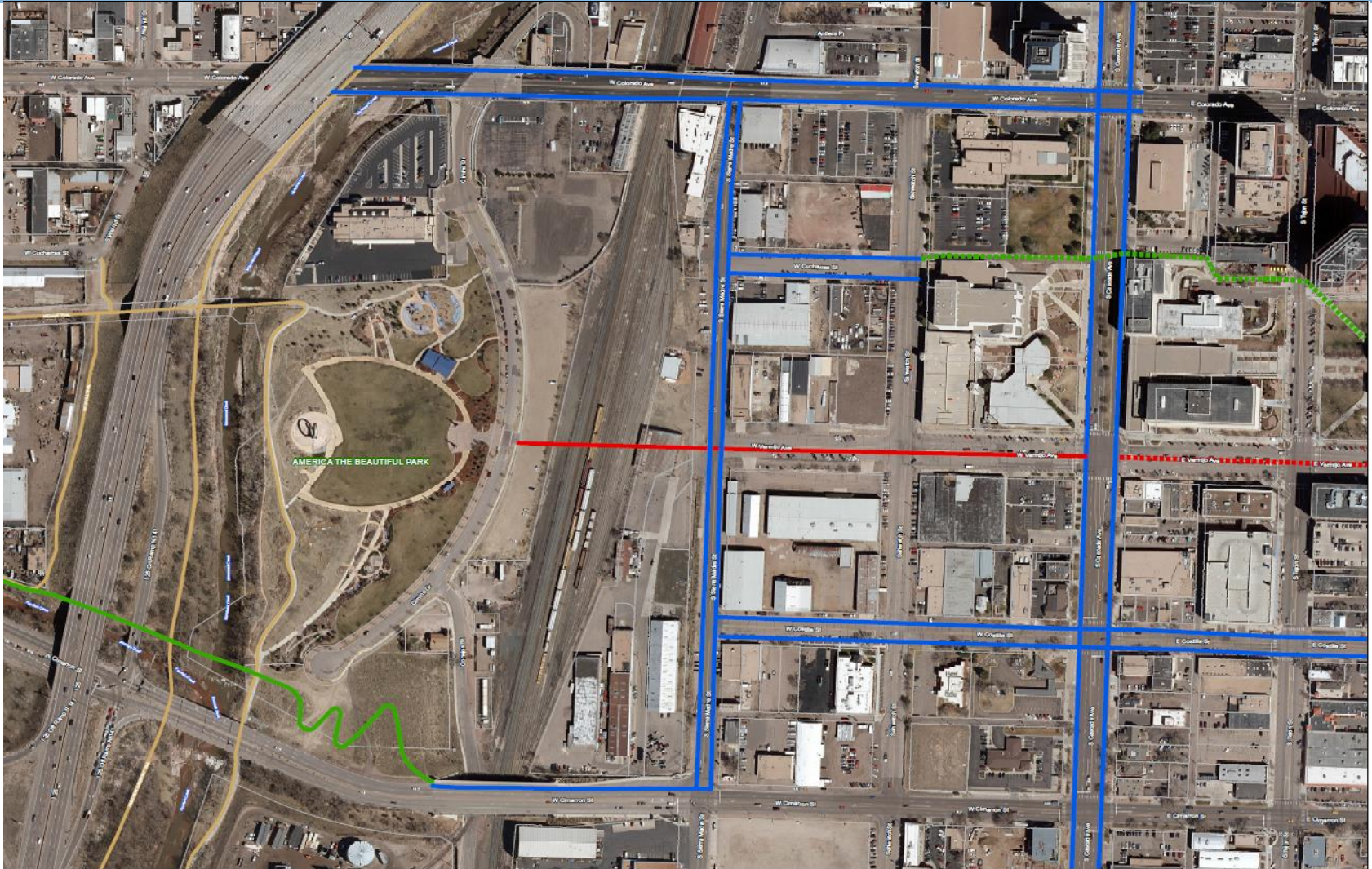
# Benefits of Land Exchange



- City will obtain ROW needed for bike trail connection to Midland Trail/Greenway Trail
- Developer will indemnify City from remediation of environmental contamination
- City will fulfill its commitment to the Community



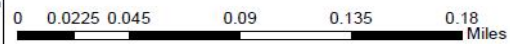
# Map of Planned Bike/Ped Connections



Department: Public Works/Asset Management Team  
 Author: TRobertson  
 Name: TSR\_20160531\_PedestrianBikeAccess\_PropanExist\_34X44\_L  
 Date Saved: 6/2/2016 9:06:43 AM



- Bike Lane 2017 Completion
- Pedestrian Area Future Plans
- Pedestrian Area 2017 Completion
- Trail 2017 Completion
- Trail Future Plans
- Trails



Map data © OpenStreetMap contributors, Imagery © Mapbox, © 2016

# Funding



- Current estimate \$9.7M
- Expended/committed to date:
  - Private
    - \$110K conceptual design
  - PPRTA – Approved by CAC and PPRTA Board
    - \$40K feasibility study
    - \$380K contract for 30% design
- Additional potential sources
  - PPRTA
  - Bond proceeds – debt service from RTA
  - TIGER grant
  - Private



# Approvals



- Railroad
  - RR Crossing structure and construction techniques
- PPRTA - CAC and Board
  - Funding
- City Engineering
  - Design
- City Council
  - Land Exchange

# Questions?

