



COS Creek Plan

RESTORE | PLAY | THRIVE

Fountain Creek Watershed Vision & Implementation Plan



JEFF SHOEMAKER

EXECUTIVE DIRECTOR



RYAN AIDS

DEPUTY DIRECTOR



COURTNEY BENSON

PROJECT ASSOCIATE

THE TEAM



CHRIS LIEBER

PRINCIPAL



JON ROMERO

ASSOCIATE



BRYN ITEN

LANDSCAPE ARCHITECT



CHRISTINE LOWENBERG

PLANNER



ASSOCIATES



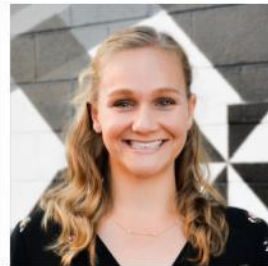
BILL WENK

PRESIDENT



NICOLE HORST

PRINCIPAL



KALYN CROSIER

ASSOCIATE



TED JOHNSON

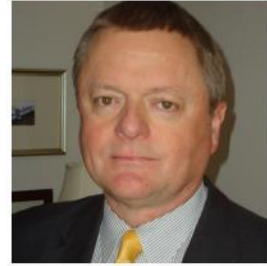
PRESIDENT



TRAVIS COULTER

VICE PRESIDENT

CAPITOL REPRESENTATIVES



DAVID HOWLETT

PRINCIPAL



MARGE PRICE

PRINCIPAL





RESTORE NATURAL FUNCTIONS OF THE CREEKS



CREATE THE SIGNATURE PLACE FOR OUTDOOR WATER
PLAY IN OUR COMMUNITY



BE A CATALYST FOR REINVESTMENT & ECONOMIC VITALITY



ENERGIZE OUR COMMUNITY & DELIVER AUTHENTIC
PLACEMAKING



CREEK CHANNEL

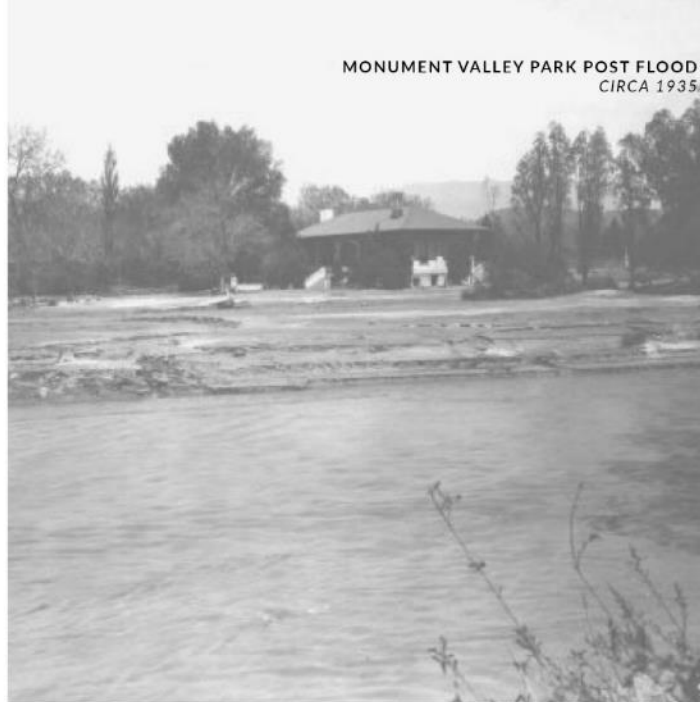
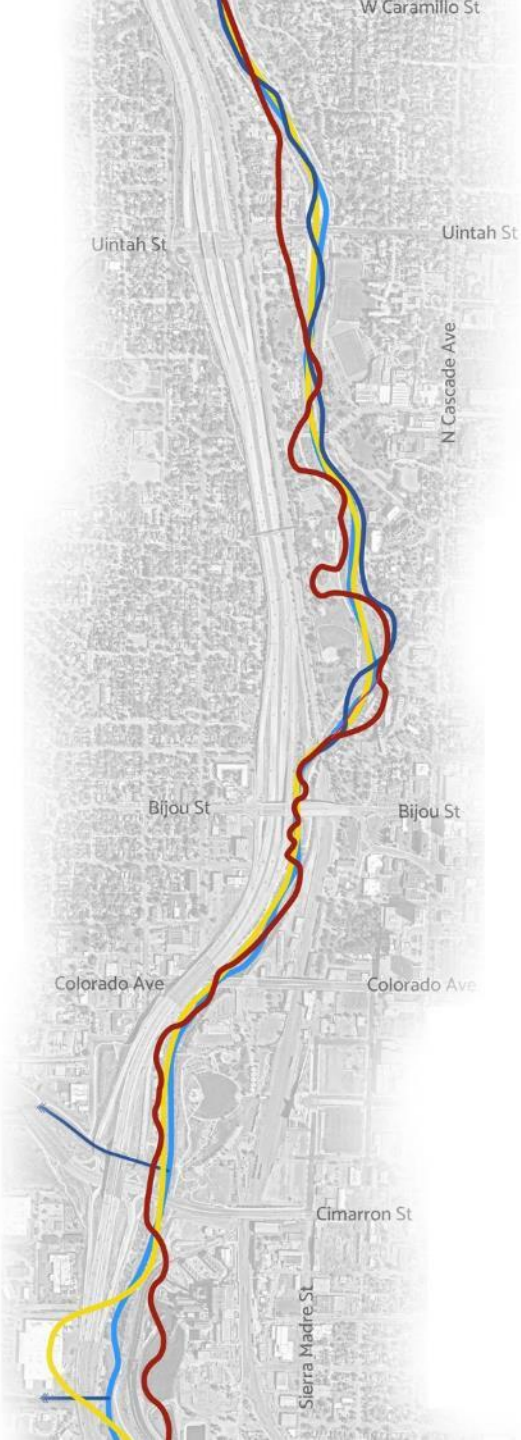
1895 

1903 

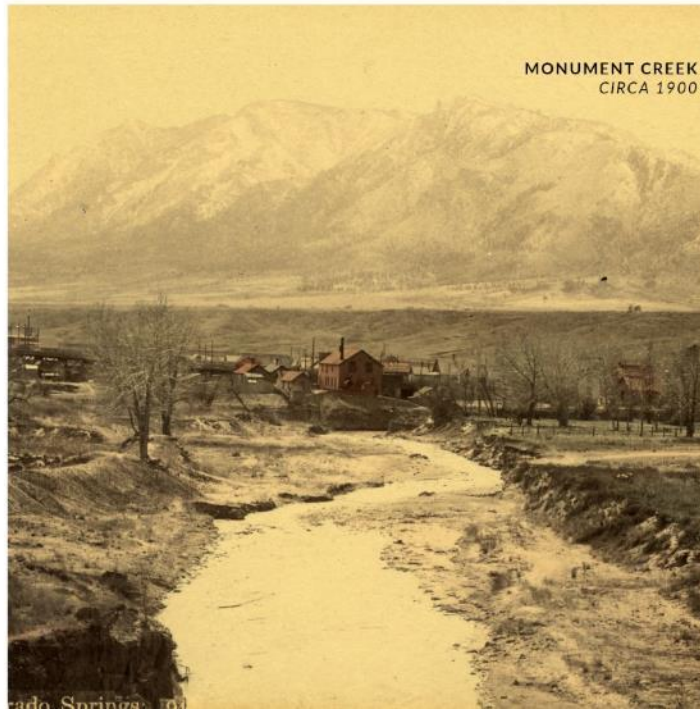
1947 

2021 

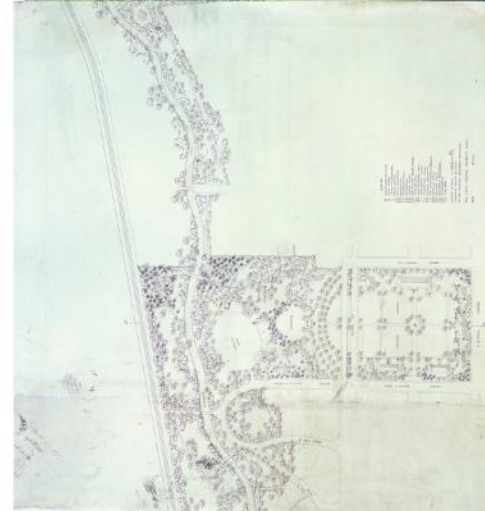
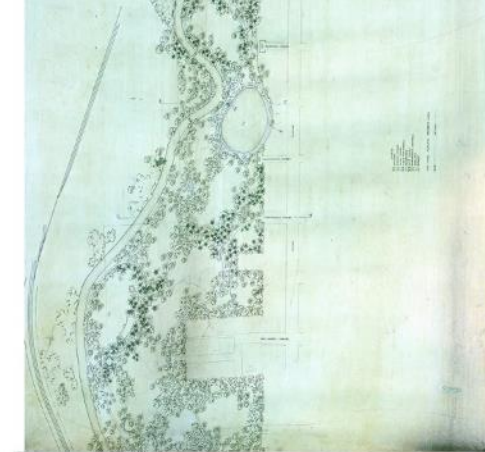
HISTORY

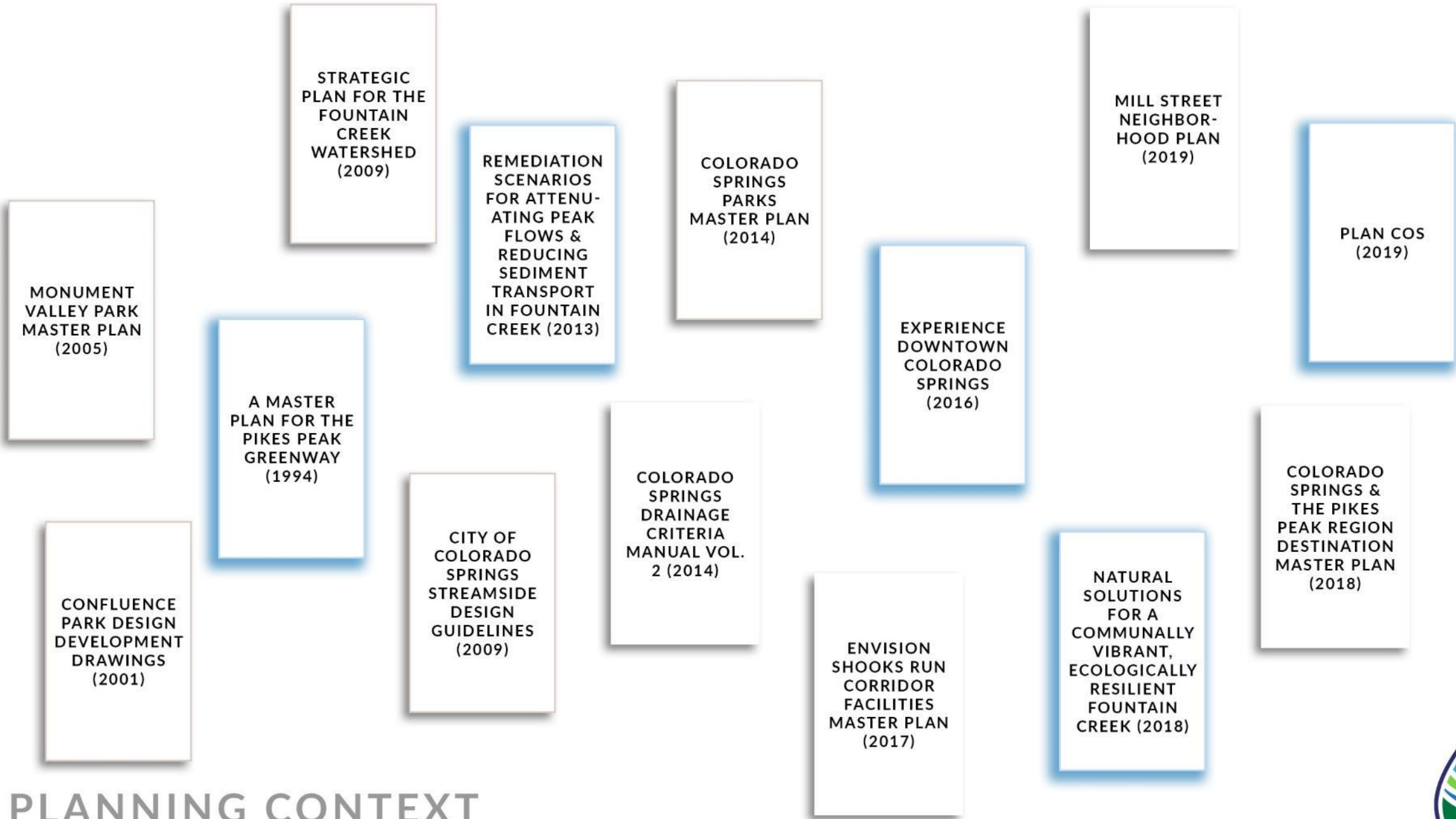


**MONUMENT VALLEY PARK POST FLOOD
CIRCA 1935**



**MONUMENT CREEK
CIRCA 1900**



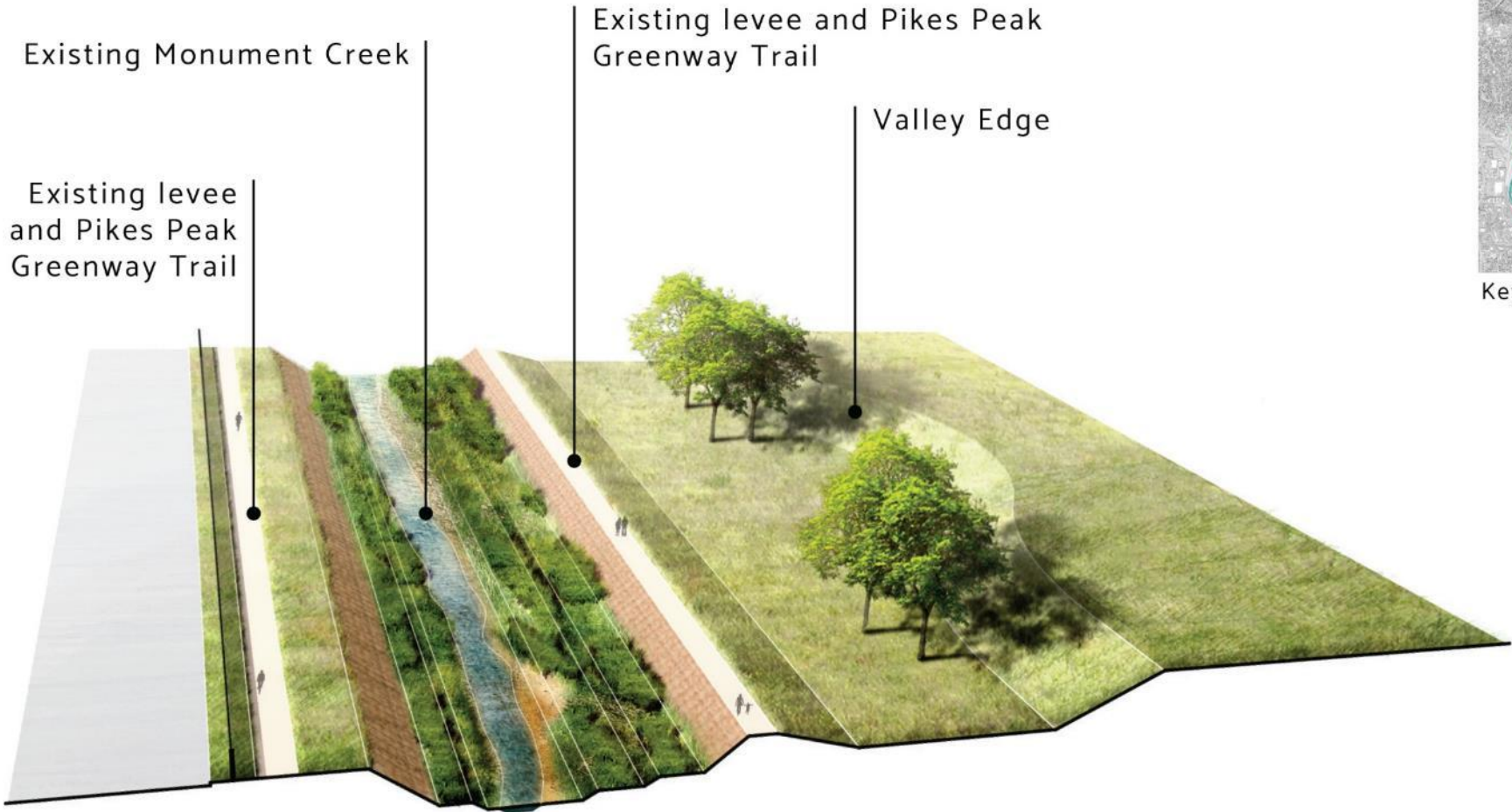


PLANNING CONTEXT



EXISTING CONDITIONS

Channelized creek between levees/ disconnected floodplain



Key Map

ALTERNATIVE FUTURES PROTOTYPE

Modify levees & expand recreational opportunities



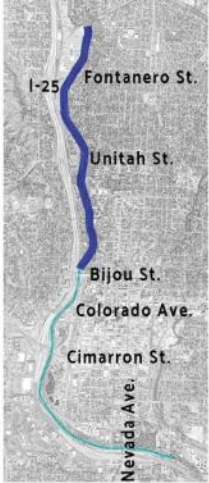
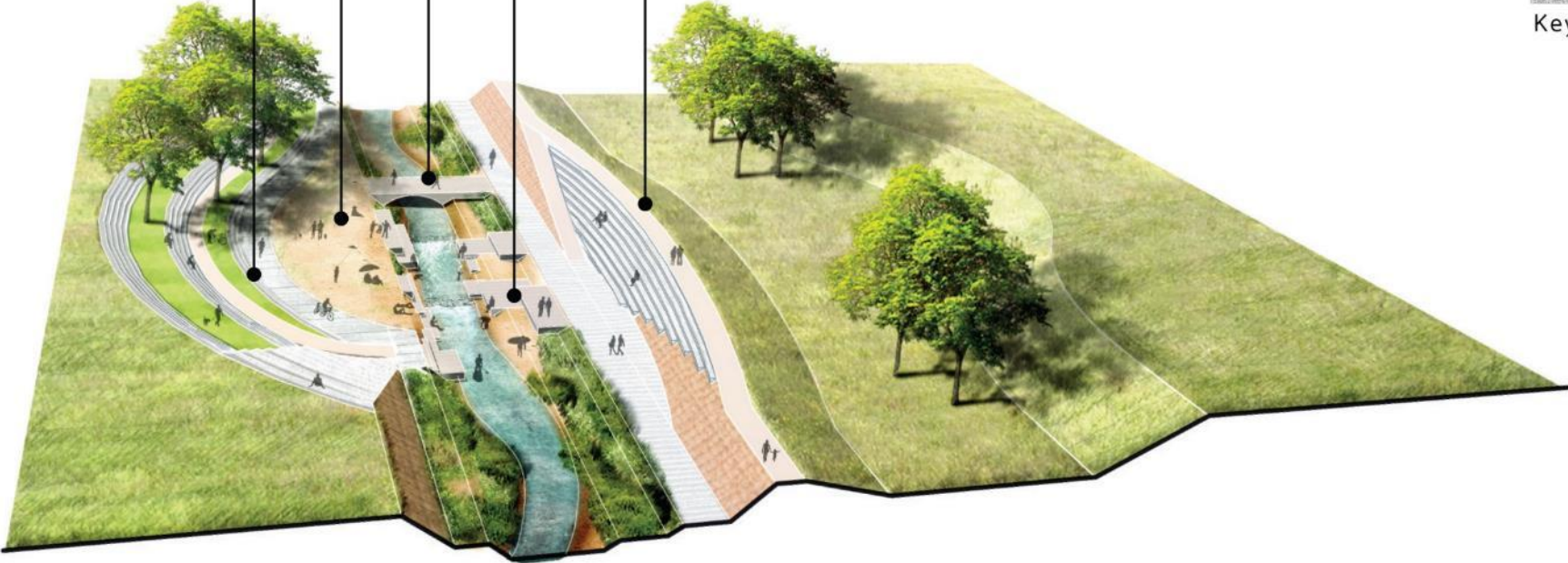
Low water crossing

Beach and water access

Sunning terraces

Safe water access for all

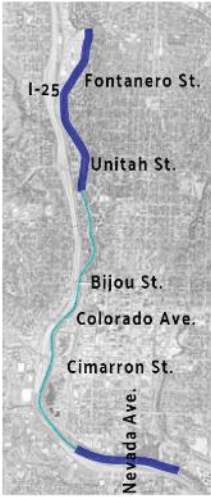
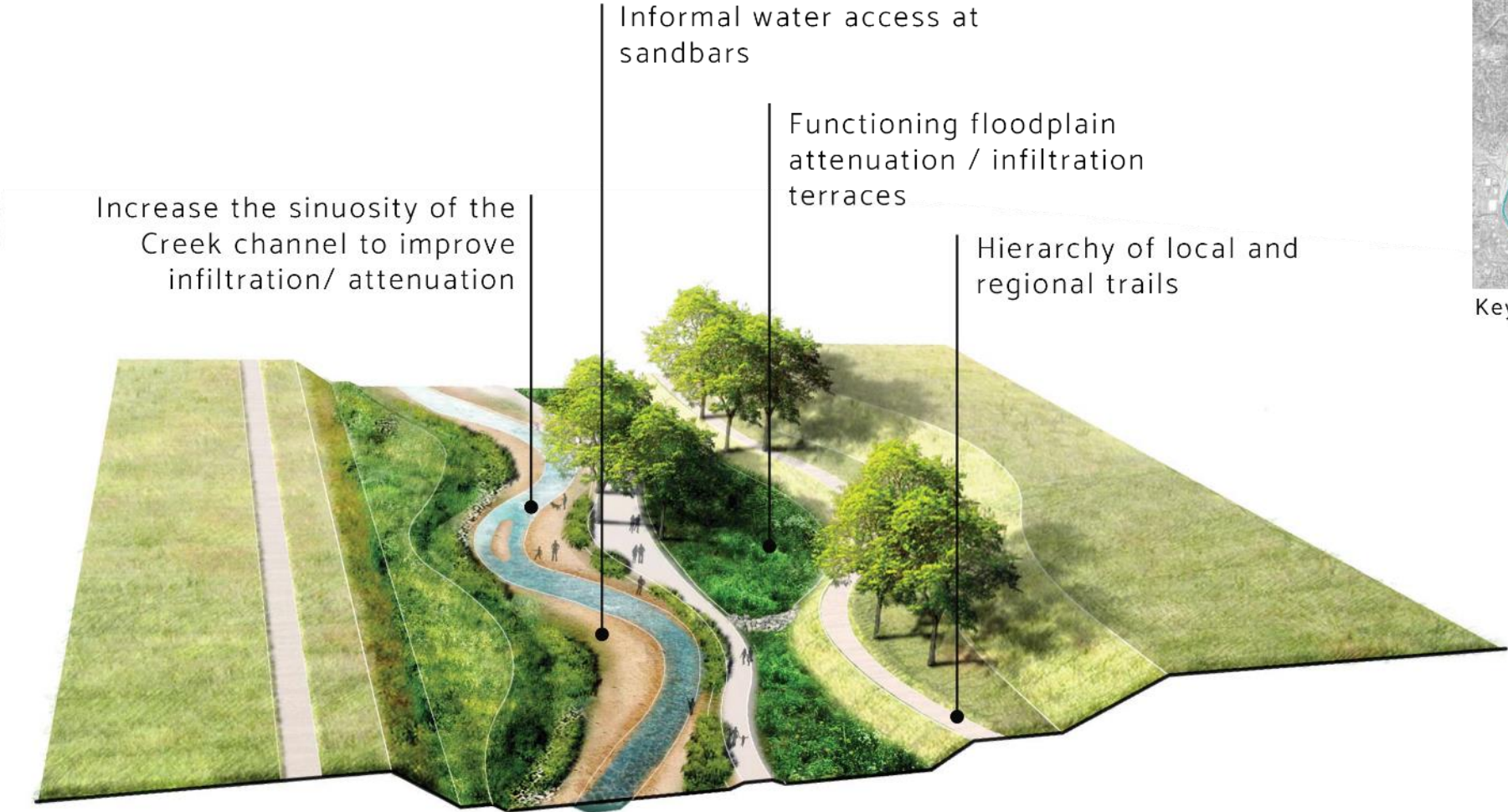
Creek access and informal seating



Key Map

ALTERNATIVE FUTURES PROTOTYPE

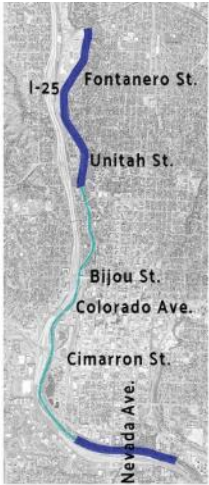
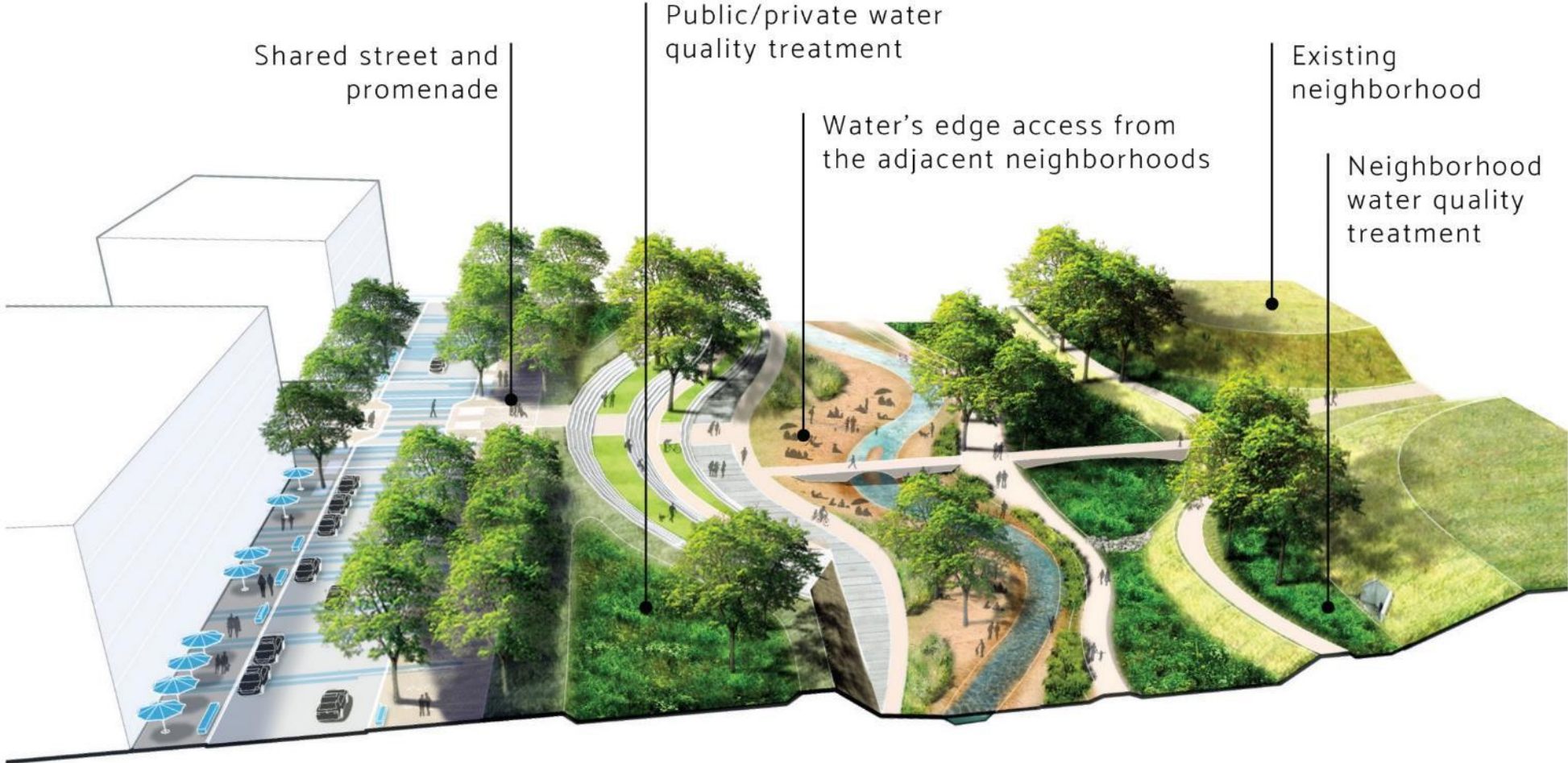
Restore functioning floodplain



Key Map

ALTERNATIVE FUTURES PROTOTYPE

Functioning floodplain/ public-private edge



Key Map







@ MVP & CENTENNIAL NEIGHBORHOOD



@ MVP & CENTENNIAL NEIGHBORHOOD



COLLEGE LANDING @ UINTAH



AMERICA THE BEAUTIFUL PARK



DRAKE WATERFRONT REIMAGINED



GATEWAY PARK SOUTH

