

# Marijuana Enforcement

Peter Wysocki, Director of Planning and  
Community Development

Commander Sean Mandel, Metro Vice,  
Narcotics and Intelligence, CSPD

Michael Curran, Division Chief Prosecution, City  
Attorney's Office



# Marijuana Enforcement



- Current Marijuana Enforcement (for residential zones)
- Metro VNI Detectives
  - Regulatory Team
- Work in conjunction with
  - Regional Building
  - CSFD
  - Code Enforcement
  - CSU

# Marijuana Enforcement



- Primarily respond to citizen complaints
- Goal is to gain compliance on the majority of complaints
- For those that have a legitimate criminal nexus – initiate a criminal investigation
  - Exporting out of state
  - Confirm illegal sales and distribution
  - Marijuana grow is for profit and distribution and not medical or recreational purposes
- Nexus to licensed MMJ facilities are also subject to license enforcement action at the City or State levels
- More complex cases will be referred to the DEA

# Marijuana Enforcement



- Future plan is to formulate a marijuana enforcement task force
  - CSPD Sergeant
  - CSPD detectives
  - CSFD – Fire Marshal Inspector
  - Code Enforcement Officer
- Goal remains to gain compliance
- Public Education and Awareness

# Marijuana Enforcement



- Treat every incident on a case by case basis
  - Criminal
  - City
  - State
  - Federal
  - Zoning
  - Code Enforcement
  - Regional building
  - Utilities

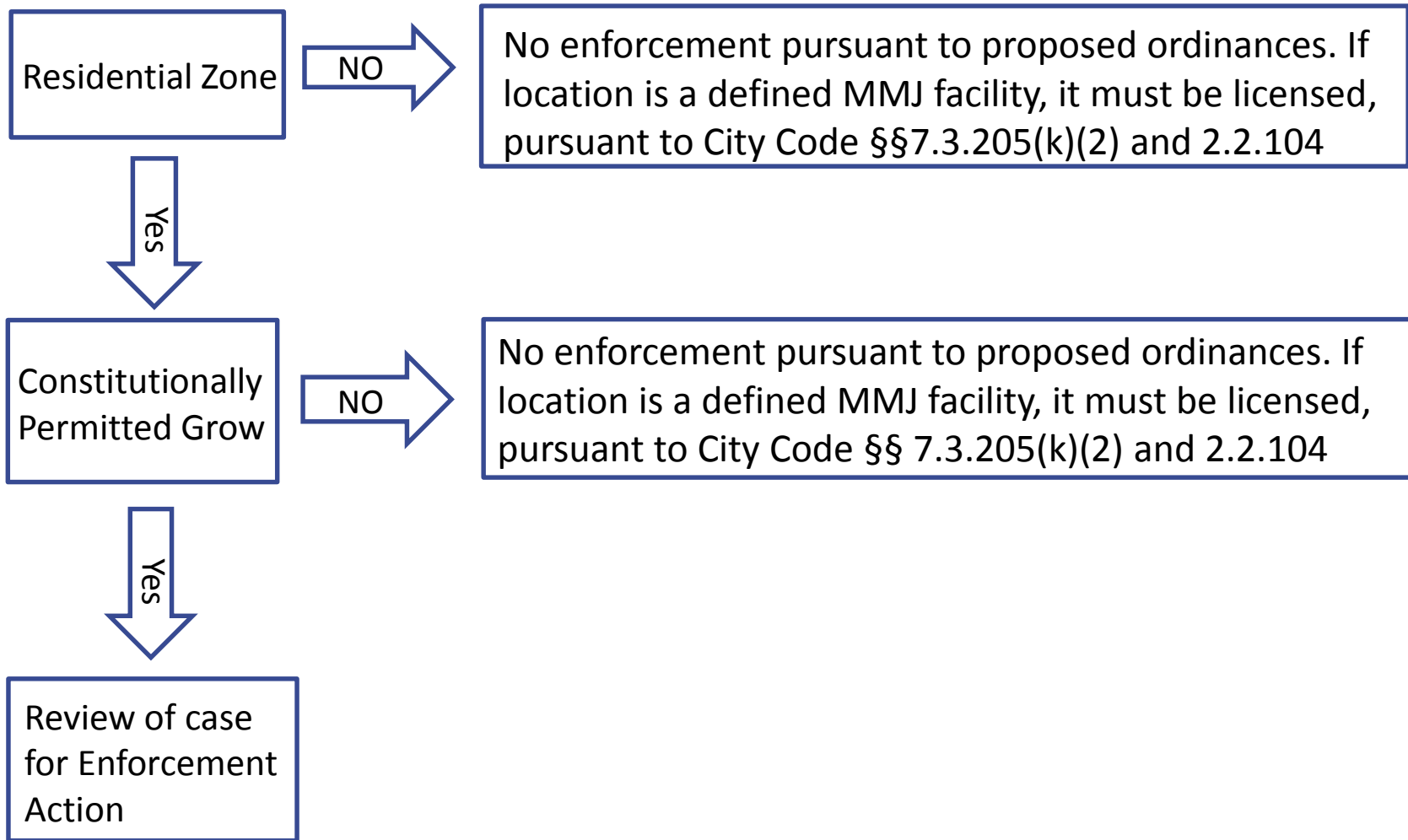
# Criminal / Zoning Enforcement –

More than 12 plants:



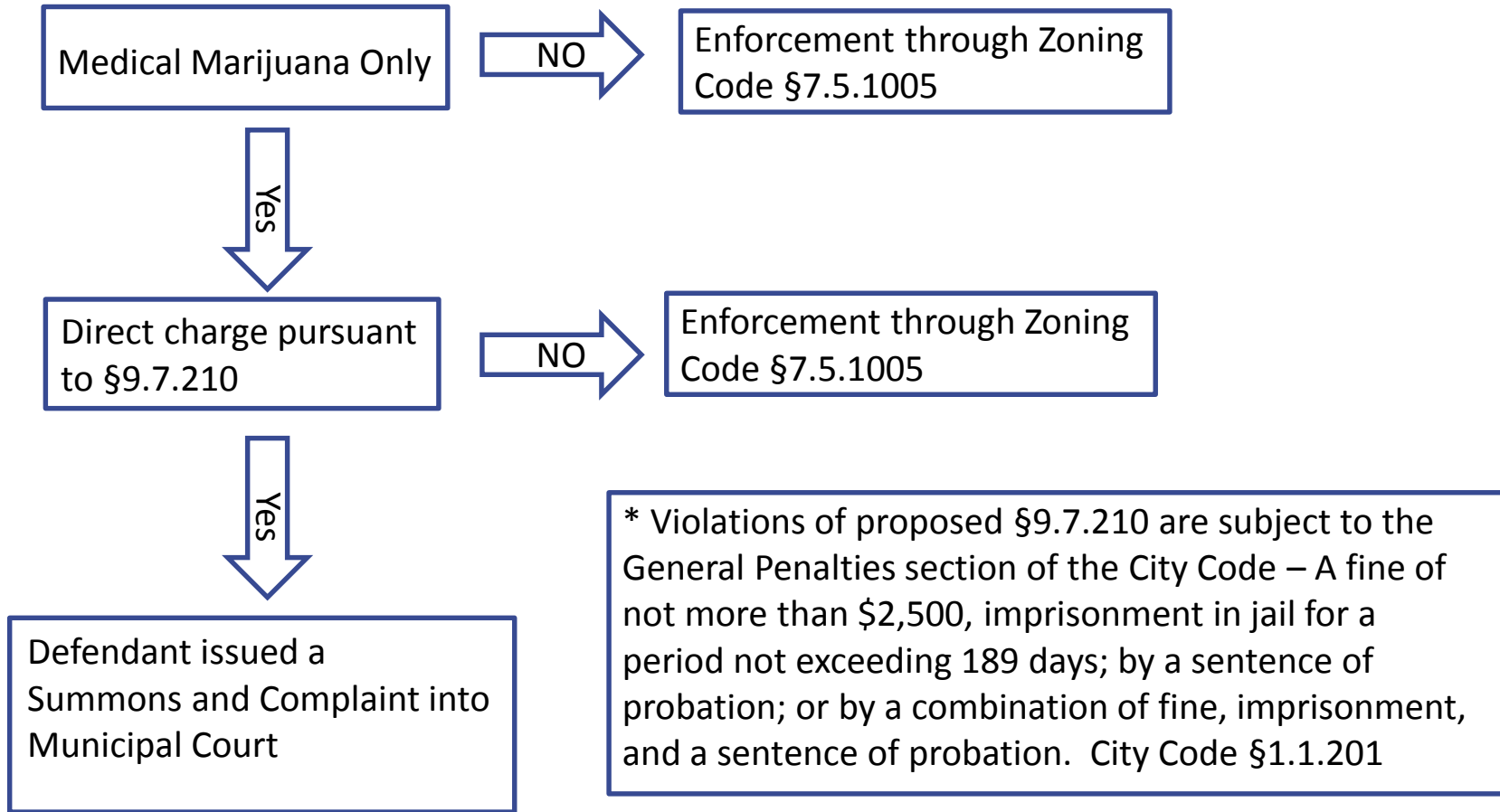
- Complaint based or as a result of CSPD / City investigation
- Allegation investigated and appropriate enforcement action taken either as a criminal violation or a zoning violation
- Matter reviewed by CSFD and RBD for other building or fire code violations, regardless and independent of criminal or zoning enforcement action

# Criminal Enforcement – More than 12 plants:



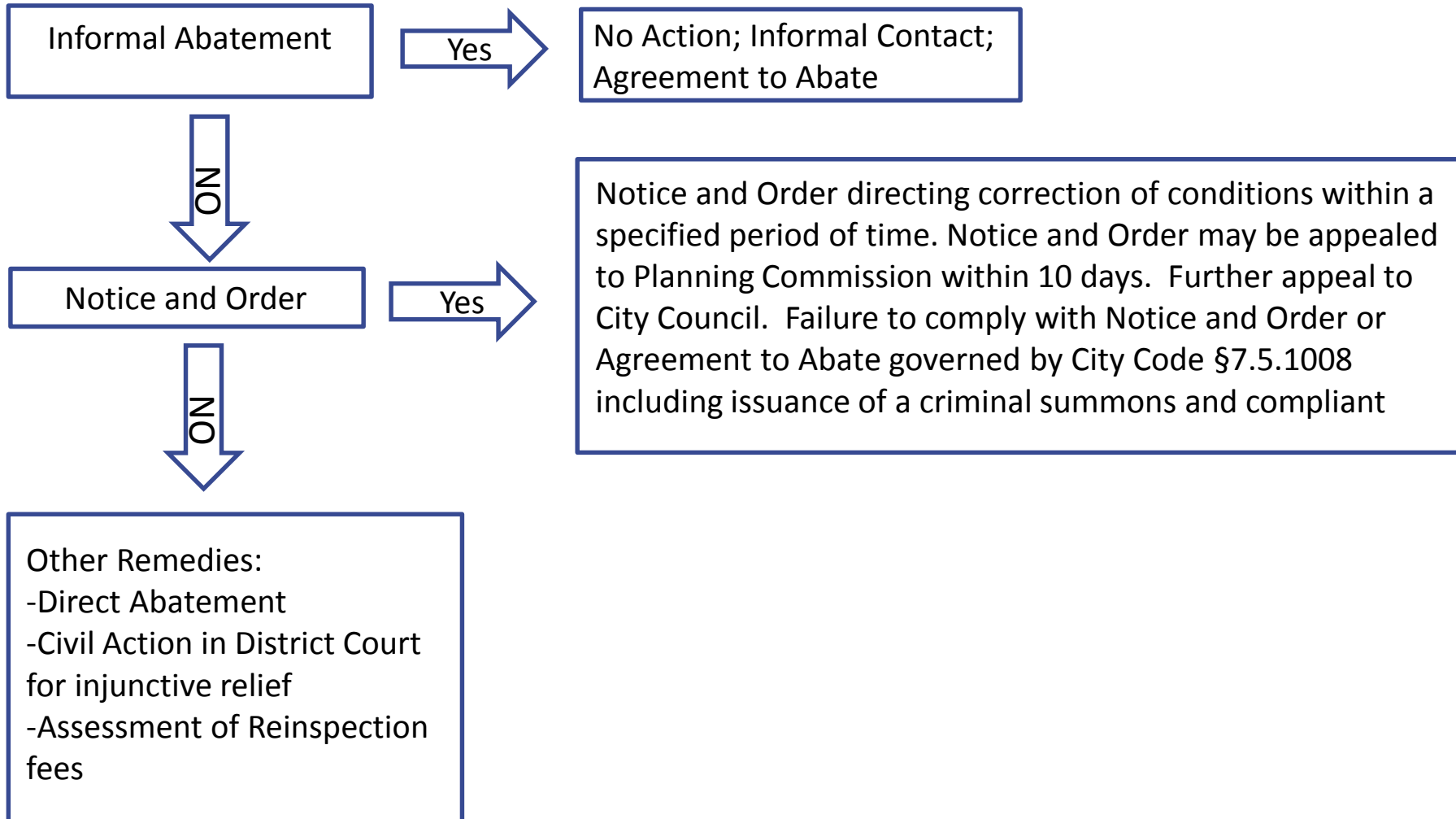
# Criminal Enforcement – Constitutionally Permitted Grows

## More than 12 plants:

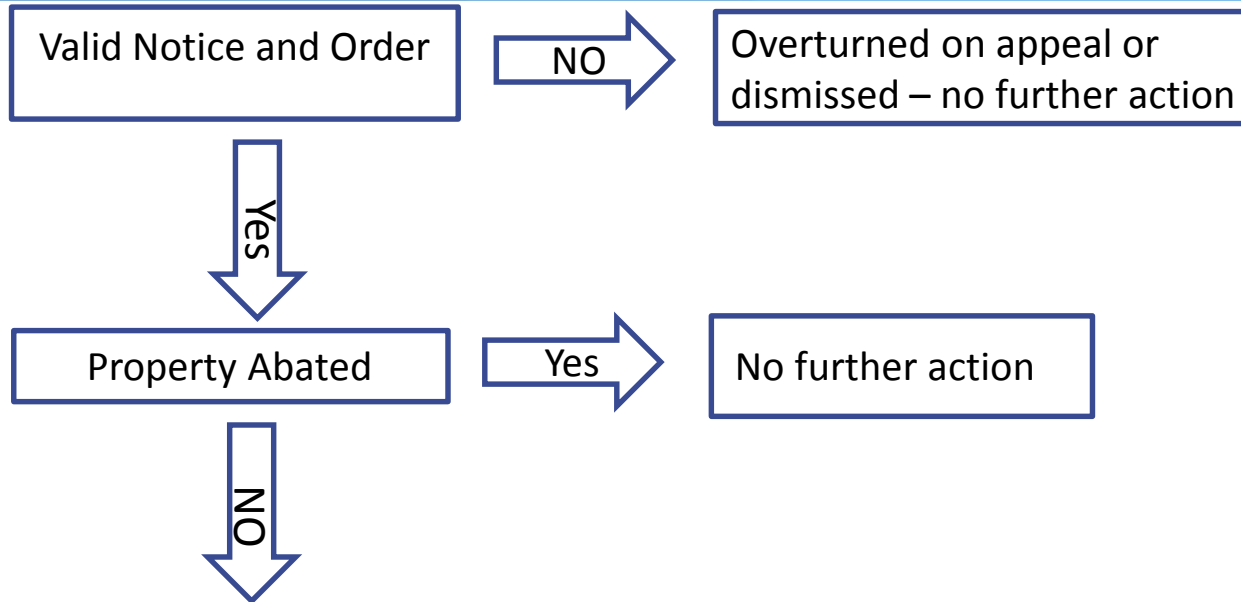




# Enforcement - Zoning Code – Constitutional Permitted Grows– More than 12 plants:



# Enforcement – Notice & Order – Constitutional Permitted Grows– More than 12 plants:



- Direct Abatement by city including collection of costs and expenses of abatement;
- Assessment of reinspection fees;
- Criminal summons and complaint in Municipal Court

\* A criminal summons and complaint issued pursuant to City Code § 7.5.1008(E) for failure to comply with a Notice and Order or Agreement to Abate is subject to the General Penalties section of the City Code – A fine of not more than \$2,500, imprisonment in jail for a period not exceeding 189 days; by a sentence of probation; or by a combination of fine, imprisonment, and a sentence of probation. City Code §1.1.201