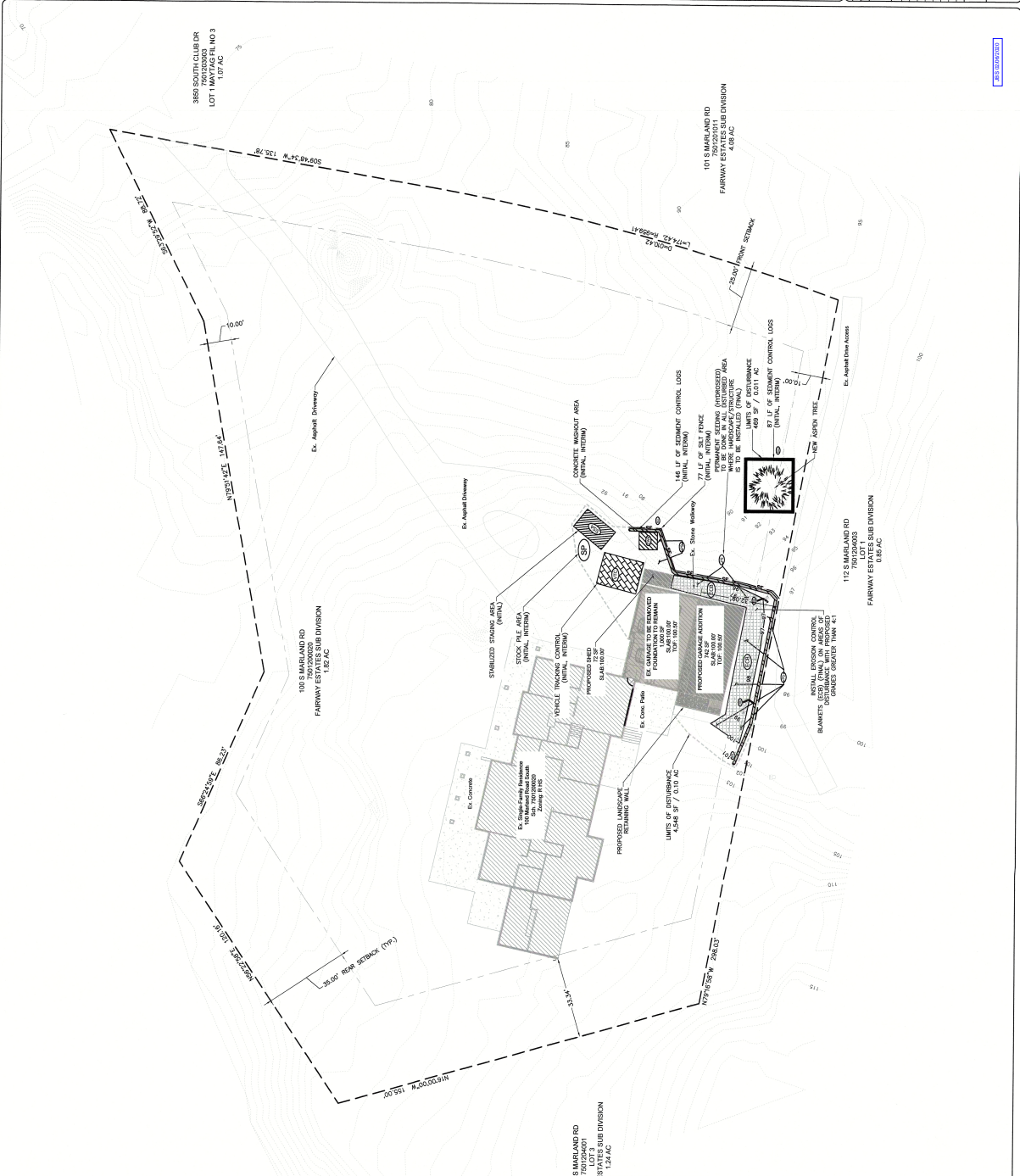




<p>ROCKY MOUNTAIN GROUP ARCHITECTS 1719 MARSHALL ST. DENVER, CO 80202 303.733.8888</p>		<p>308, LLC COLORADO SPRINGS, COLORADO</p>	<p>ATTACHED GARAGE ADDITION - BARTLETT SUBDIVISION</p>	<p>PERMIT REVIEW</p>	<p>SHEET NO. 170039</p>	<p>CAD</p>
					<p>DATE 01/13/2020</p>	<p>SCALE</p>



**EROSION CONTROL LEGEND**

- SDA STABILIZED DRIVE ACCESS
- SSA STABILIZED STAGING AREA
- CWA CONCRETE WASHOUT AREA
- SCL SEDIMENT CONTROL LOSS
- RS ROCK SOCKS
- PS PERMANENT SEEDING
- ECB EROSION CONTROL BLANKET
- VTC VEGETATION TRAPPING CONTROL
- SP SILT FENCE
- STOCK PILE AREA

**Graphic Scale**  
0 10 20 40  
IN FEET: 1" = 20'

**104 S MARLAND RD LOT 124 AC FAIRWAY ESTATES SUB DIVISION**

**RECOMMENDATIONS:**

1. ALL EROSION CONTROL MEASURES SHOULD BE INSTALLED PRIOR TO THE START OF CONSTRUCTION.
2. THE RECOMMENDED SEED MIXTURE IS SUITABLE FOR THE COLORADO FRONT RANGE FOR SEED FROM THE COLORADO FRONT RANGE. SEED MIXTURE SHOULD BE MADE AFTER CONSULTATION WITH A QUALIFIED SEEDING CONTRACTOR.
3. THE RECOMMENDED SEED MIXTURE IS SUITABLE FOR THE COLORADO FRONT RANGE FOR SEED FROM THE COLORADO FRONT RANGE. SEED MIXTURE SHOULD BE MADE AFTER CONSULTATION WITH A QUALIFIED SEEDING CONTRACTOR.
4. THE RECOMMENDED SEED MIXTURE IS SUITABLE FOR THE COLORADO FRONT RANGE FOR SEED FROM THE COLORADO FRONT RANGE. SEED MIXTURE SHOULD BE MADE AFTER CONSULTATION WITH A QUALIFIED SEEDING CONTRACTOR.

**BID COST ESTIMATE:**

ITEM	QUANTITY	UNIT	UNIT PRICE	TOTAL
STABILIZED DRIVE ACCESS	233	LF	\$2.75/LF	\$640.75
STABILIZED STAGING AREA	111	EA	\$200.00/EA	\$22,200.00
CONCRETE WASHOUT AREA	1	EA	\$1,325.00/EA	\$1,325.00
SEDIMENT CONTROL LOSS	237	SP	\$2.37/SP	\$561.69
ROCK SOCKS	1,400	SP	\$1.00/SP	\$1,400.00
PERMANENT SEEDING	1,400	SP	\$1.00/SP	\$1,400.00
<b>TOTAL</b>				<b>\$26,927.44</b>

**NOTES:**

1. ALL UNIT PRICES REFLECT INSTALLED UNLESS OTHERWISE NOTED.
2. DETAILS TO BE PROVIDED BY THE CONTRACTOR.
3. ALL EROSION CONTROL MEASURES SHALL BE INSTALLED PRIOR TO THE START OF CONSTRUCTION.

