



N.E.S., Inc.
 619 N. Cascade Avenue, Suite 200
 Colorado Springs, CO 80903
 Tel. 719.471.0073
 Fax. 719.471.0067
 www.nescolorado.com
 © 2012, All Rights Reserved.

FLYING HORSE PARCEL 13-CAPRI FILING 1 & 2

NEW LIFE DRIVE & REDDING WATER DR.
 DATE: 2-26-19
 PREPARED BY: J. SHERMAN & S. SAMBET
 CHECKED BY: J. SHERMAN

ENTITLEMENT

DATE	BY	DESCRIPTION
8-10-19	RS	RE-CITY COMMENTS
8-17-19	RS	RE-CITY COMMENTS

OVERALL DEVELOPMENT PLAN & TRACT MAP

2 OF 14
 CPC PUD 19-00030

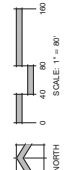
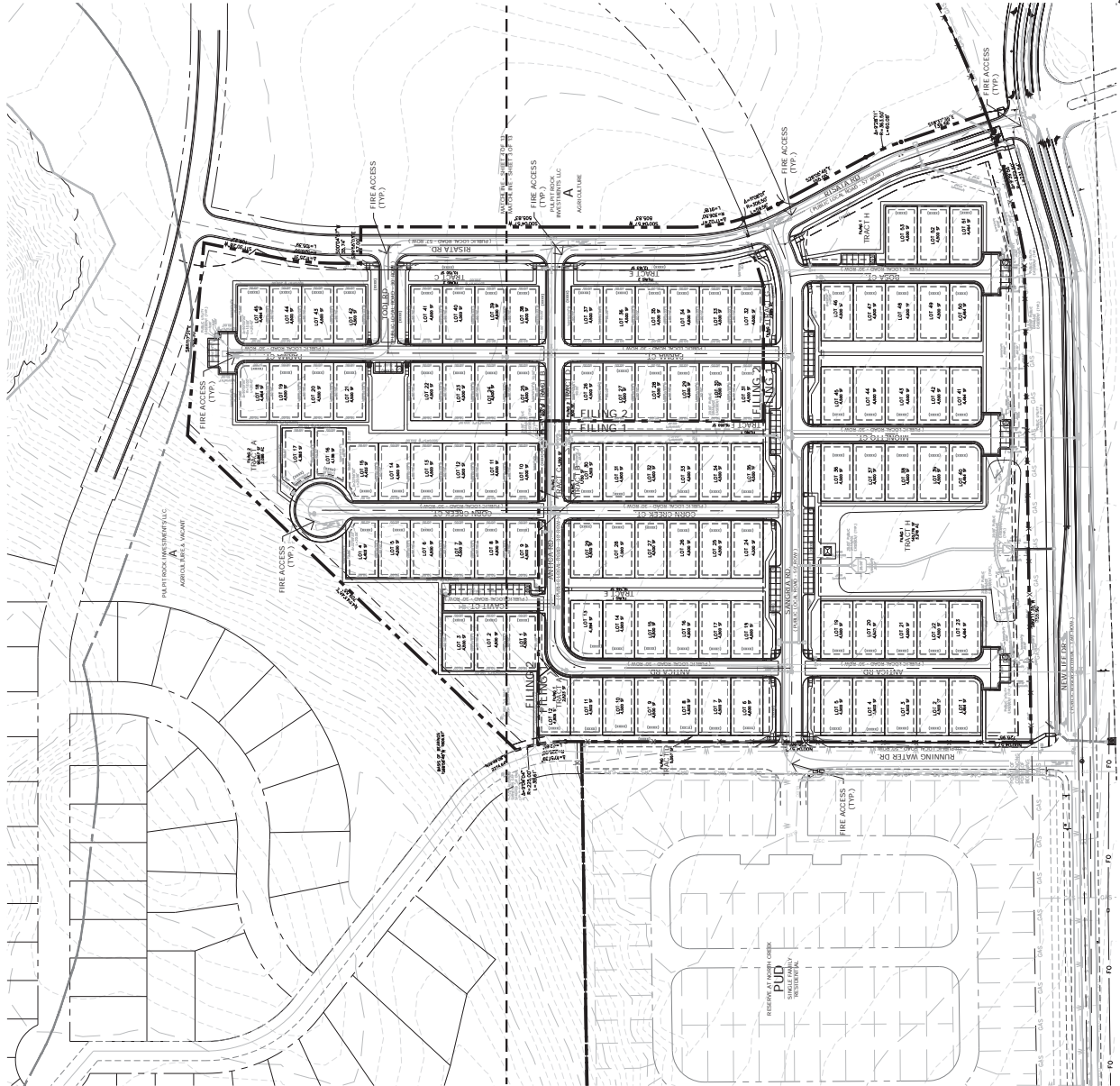


FIGURE 3