



EL PASO COUNTY
EMERGENCY MANAGEMENT

Hazard Mitigation Plan Overview

Jim Reid, PPROEM Director

Mike Schaub, HMP Project Manager

Overview



- Why do we need an HMP?
- Plan History
- Plan Basics
- Key Plan Takeaways
- Current Grant Status
- Why a Merged Plan?
- ???

Hazard Mitigation Planning Defined



- What it is
 - A continuous process of identifying hazards and the optimization and execution of mitigation strategies
 - The plan
 - Reduces loss of life and property by minimizing the impact of disasters
 - It begins with local governments identifying natural disaster risks and vulnerabilities that are common in their area
 - The plan then lists long-term strategies for protecting people and property from future events
- What it is not
 - A response plan
 - A tactically-focused threat analysis

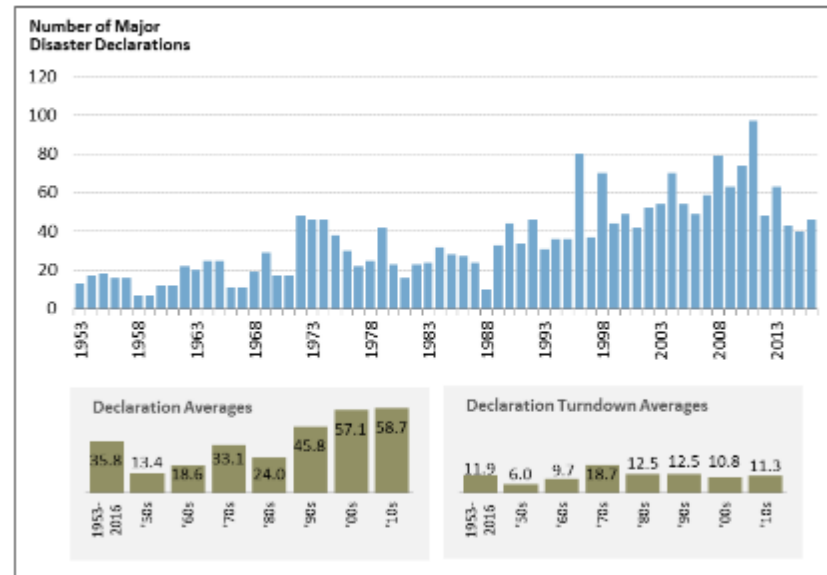




Why do we need an HMP?

- Cycle of federal disaster declarations
 - Steady increase in declarations
 - Repeat reconstruction due to similar events
- Hazard mitigation attempts to break this cycle
 - FEMA PA 406 Mitigation
 - FEMA 404 Mitigation
 - **HMP Grants**

Figure 5. Major Disaster Declarations
1953-2016



Source: CRS analysis based on data from U.S. Department of Homeland Security, Federal Emergency Management Agency, Disaster Declarations, available at <https://www.fema.gov/disasters> and data provided by FEMA.

Provides Guidance to Local Govts



- Plan identifies hazards and vulnerabilities
- Plan also helps track mitigation efforts
- Local governments input mitigation strategies during plan creation; **track on an annual basis**



Mitigation Plan Requirement for Governments Applying for Certain FEMA Grants			
Enabling Legislation	FEMA Assistance Program	Is a Mitigation Plan Required?	
		State Applicant	Local Sub- Applicant
Stafford Act	Individual Assistance (IA)	No	No
	Public Assistance (PA) Categories A and B (e.g., debris removal, emergency protective measures)	No	No
	Public Assistance (PA) Categories C through G (e.g., repairs to damaged infrastructure, publicly- owned buildings)	Yes	No
	Fire Mitigation Assistance Grants (FMAG)	Yes	No
	Hazard Mitigation Grant Program (HMGP) planning grant	Yes	No
	Hazard Mitigation Grant Program (HMGP) project grant	Yes	Yes
	Pre-Disaster Mitigation (PDM) planning grant	No	No
	Pre-Disaster Mitigation (PDM) project grant	Yes	Yes
	Building Resilient Infrastructure and Communities (BRIC)	Yes	Yes
	National Flood Insurance Act	Flood Mitigation Assistance (FMA) planning grant	Yes
Flood Mitigation Assistance (FMA) project grant		Yes	Yes

EMAP Accreditation



- Emergency Management Accreditation Program (EMAP) devotes an entire chapter to mitigation requirements
 - Hazard identification
 - Must identify hazards, risks, and vulnerabilities
 - Requires a “maintenance program” for risk assessments
 - Hazard mitigation
 - Requires a plan to implement mitigation projects
 - Determines project rankings by greatest opportunity for loss reduction
 - Hazard Prevention
 - Required to coordinate prevention activities
 - Must monitor identified threats and hazards
 - Adjusts programs due to threat changes



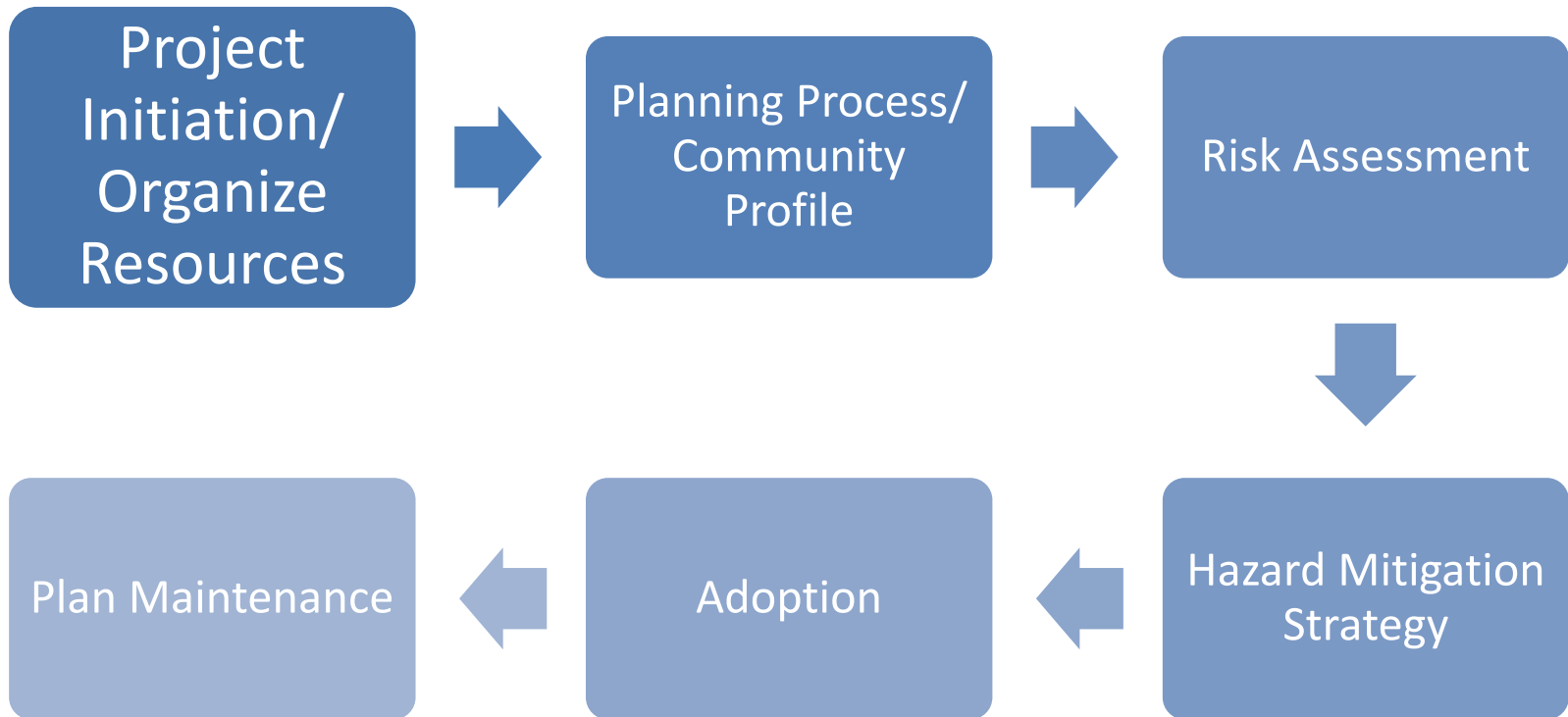
Plan History



- City of Colorado Springs: 2016-2021
- El Paso County: 2015-2020
- First merged plan: 2020-2025
 - Michael Baker Intl selected in late 2019
 - Period of performance: Nov 2019 – Oct 2020



Plan Basics – the Process



Plan Basics – Required Contents



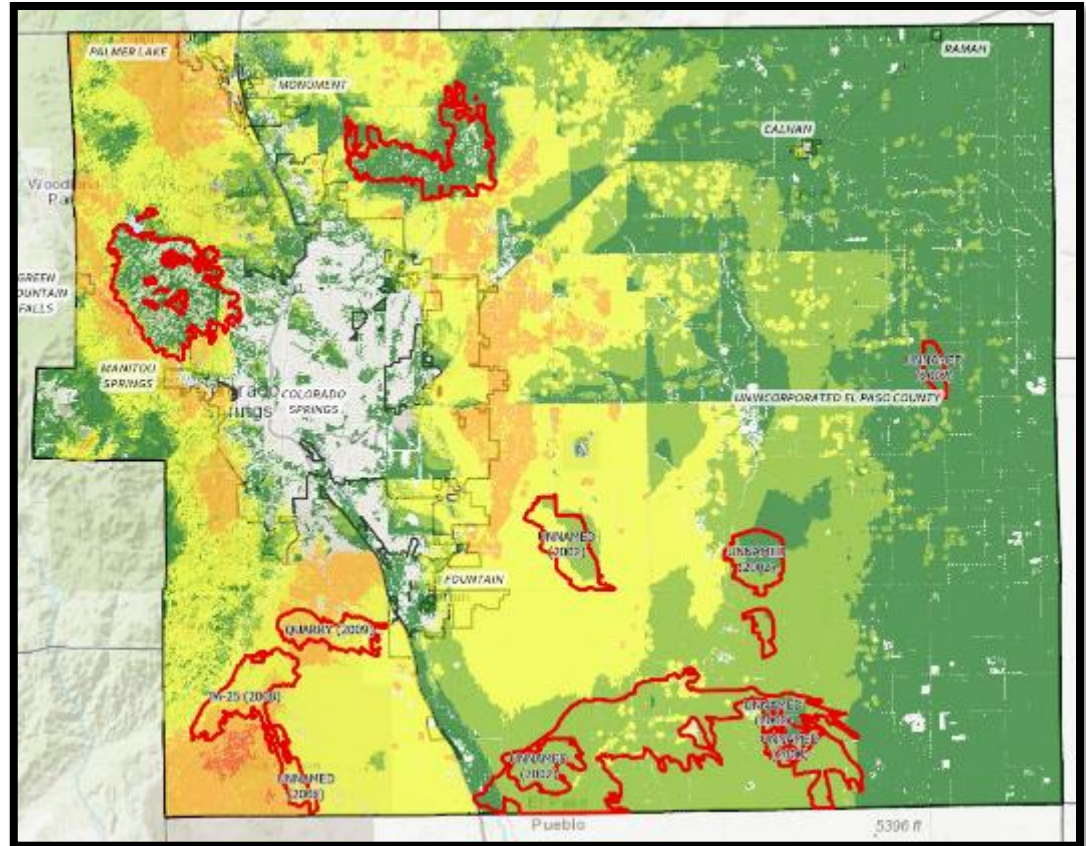
- Planning Process
- Pikes Peak Region Profile
- Hazard Identification and Risk Assessment (HIRA)
- Mitigation Strategy
- Plan Implementation and Maintenance

Wildfires



Wildfire Risk & Historic Fire Perimeters

- Hazard data
 - Previous occurrences
 - » Location/Size
 - » Damages
 - Burn probability
 - Risk rating
- Risk & Vulnerability
 - Wildland/Urban Interface
 - » Buildings & Infrastructure
 - » Previous mitigation (thinning, prescribed burns)

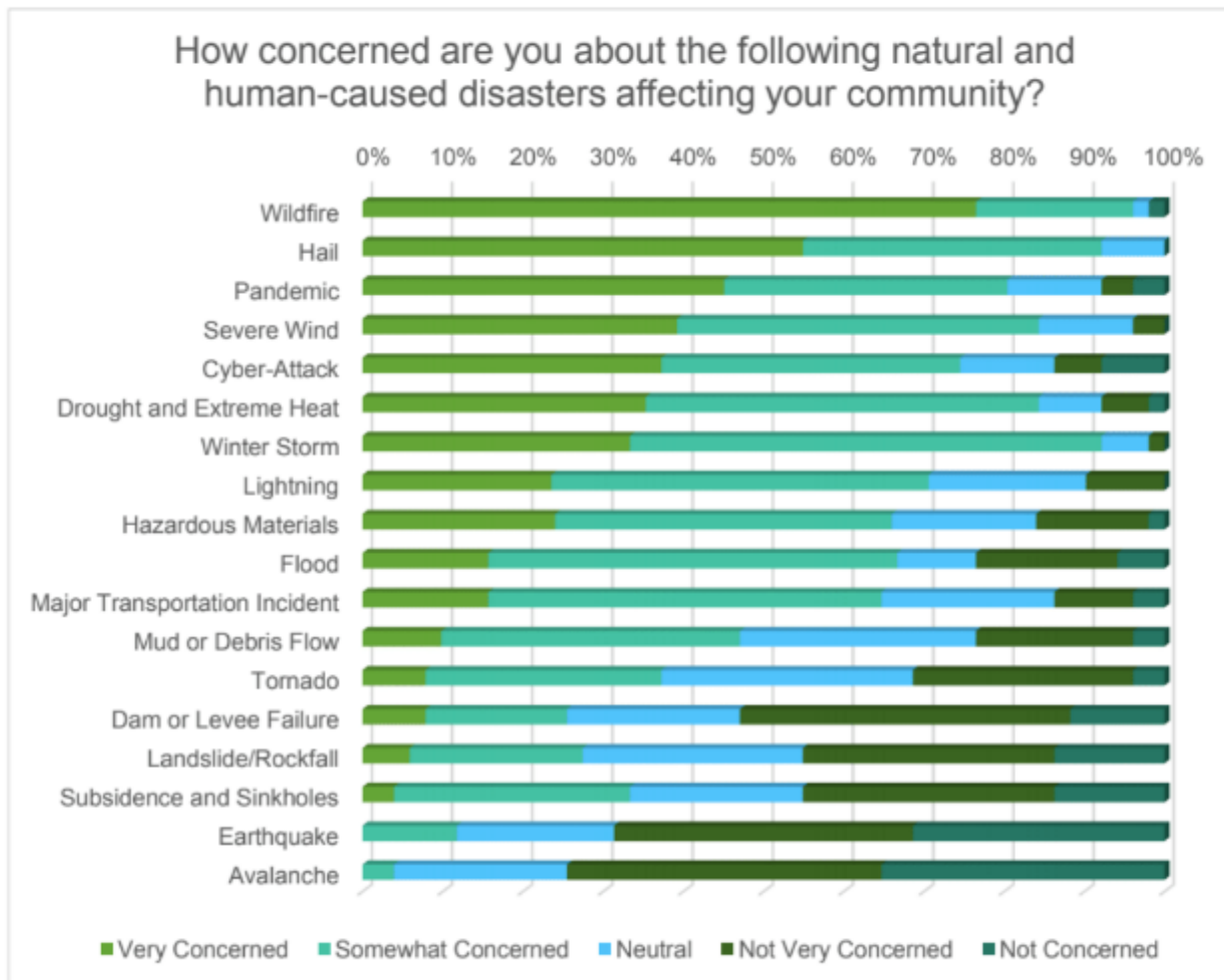


Calhan	COS	EPC	Fountain	Green Mtn Falls	Manitou Springs	Monument	Palmer	Ramah
Moderate	High	High	Moderate	High	High	High	High	Low

Key Takeaways



Figure 4-1: Perceived Threat of Natural & Human-Caused Hazards



Hazard Risk Ratings



Table 4-4: Overall Hazard Risk Ranking

	Calhan	Colorado Springs	El Paso County	Fountain	Green Mountain Falls	Manitou Springs	Monument	Palmer Lake	Ramah	Regionwide
Aircraft Incident	Moderate	Moderate	Moderate	Moderate	Low	Low	Moderate	Low	Low	Moderate
Avalanche	Negligible	Low	Low	Negligible	Low	Negligible	Negligible	Negligible	Negligible	Low
Cyber-Attack	Moderate	Moderate	Moderate	Moderate	Moderate	Moderate	Moderate	Moderate	Moderate	Moderate
Dam/Levee Failure	Low	Moderate	Moderate	Moderate	Low	Moderate	Moderate	Low	Low	Moderate
Drought & Extreme Heat	Moderate	Moderate	Moderate	Moderate	Moderate	Moderate	Moderate	Moderate	Moderate	Moderate
Earthquake	Low	Moderate	Moderate	Low	Moderate	Moderate	Moderate	Moderate	Low	Moderate
Extreme Acts of Violence	Low	Moderate	Moderate	Low	Low	Low	Low	Low	Low	Low
Flood	Low	High	High	Moderate	High	High	Moderate	Low	Low	Moderate
Hail	Moderate	Moderate	Moderate	Moderate	Moderate	Moderate	Moderate	Moderate	Moderate	Moderate
Hazmat	Low	High	Moderate	High	Low	Moderate	High	Moderate	Low	Moderate
Landfall/Rockfall	Negligible	Moderate	Moderate	Low	Low	Moderate	Low	Negligible	Negligible	Low
Lightning	Low	Moderate	Moderate	Moderate	Moderate	Moderate	Moderate	Moderate	Low	Moderate

Hazard Risk Ratings – Cont'd



	Calhan	Colorado Springs	El Paso County	Fountain	Green Mountain Falls	Manitou Springs	Monument	Palmer Lake	Ramah	Regionwide
Mud or Debris Flow	Negligible	High	Moderate	Low	Moderate	High	Low	Moderate	Negligible	Moderate
Pandemic/ Epidemic	Moderate	Moderate	Moderate	Moderate	Moderate	Moderate	Moderate	Moderate	Moderate	Moderate
Subsidence & Sinkholes	Negligible	Moderate	Low	Negligible	Negligible	Low	Negligible	Negligible	Negligible	Low
Tornado	Moderate	Moderate	Moderate	Moderate	Low	Low	Low	Low	Moderate	Moderate
Wind	Moderate	Moderate	Moderate	Moderate	Moderate	Moderate	Moderate	Moderate	Moderate	Moderate
Wildfire	Low	High	High	Moderate	High	High	High	High	Low	Moderate
Winter Storm	Moderate	Moderate	Moderate	Moderate	Moderate	Moderate	Moderate	Moderate	Moderate	Moderate

Mitigation Strategies



Initiative	Description	Hazard(s) Mitigated	Status of Action	Status Description	Priority	Cost	Lead & Support Agency	Timeframe	Alignment with Goals and Objectives
City of Colorado Springs Actions									
Initiative #71- Wildfire Mitigation Education and Outreach to Neighborhoods at Risk	Continue conducting wildfire presentations to neighborhoods in order to educate them on mitigation concepts. One consideration for project prioritization is based on the receptiveness of the community.	Wildfire	Ongoing	PPROEM hosted two community meetings focused on wildfire, flood and geological hazards in partnership with several organizations including the Division of the Fire Marshal, the Independence Center, and others. CSFD Wildfire Mitigation program continues to provide education to residents and homeowners. City Communications conducted social media wildfire mitigation and prevention messaging.	High	Low/St aff Time	Division of the FM	Ongoing	Goals: 3 Objectives: 3.1, 3.2 & 3.3
Initiative #72- Wildfire Mitigation Outreach to the Business Community	Expand Business Education and Outreach about wildfire concerns, evacuation, and business continuity. Continue integration with the Division of the Fire Marshal's current efforts focused on businesses and healthcare facilities. Explore expanding outreach to adopt an all-hazards perspective in partnership with OEM.	Wildfire	Ongoing	Current efforts among the Division of the Fire Marshal and American Red Cross to discuss the importance of maintaining continuity of operations. The Colorado Springs Fire Department Wildfire Mitigation Section provides free development reviews, on-site consultations, vegetation management reviews and inspections to ensure businesses are prepared for a wildfire event	Med	Low/St aff time	Division of the FM and OEM	Ongoing	Goals: 3 and 6 Objectives: 3.1, 3.2, 3.3 & 6.3
Initiative #73- Templeton Gap Floodway Accreditation	Obtain documentation regarding the floodway's accreditation status from USACE and FEMA. Determine if the City should seek accreditation.	Flood/ Levee failure	In Progress	A 5-year study is being conducted by FEMA that will more accurately map risk and identify ways to reduce risk. Water Resources Engineering Division will apply for a self-accreditation of the levee using the USACE report from 2017 and the study currently being performed by FEMA	Low	Low/St aff time	Public Works/Stormwater	Short-term	Goals: 1 & 2 Objectives: 1.4 & 2.4

Approval Timeline



- 7-21 October: Final Public Review
- 7-31 October: Local Government Review (except for EPC and COS)
- 7 October: Initial DHSEM and FEMA Region VIII Review
- 1 Nov – 31 Dec: EPC and COS Approval
- 1 Jan – 20 Jan: Final DHSEM and FEMA Approval

Merged Plan Benefits



- Provides a Common Operational Picture of both hazards and mitigation strategies
- Allows for optimization of mitigation efforts in the Pikes Peak Region
- Improves chances of securing grant opportunities at the federal level





EL PASO COUNTY
COLORADO SPRINGS

Questions?