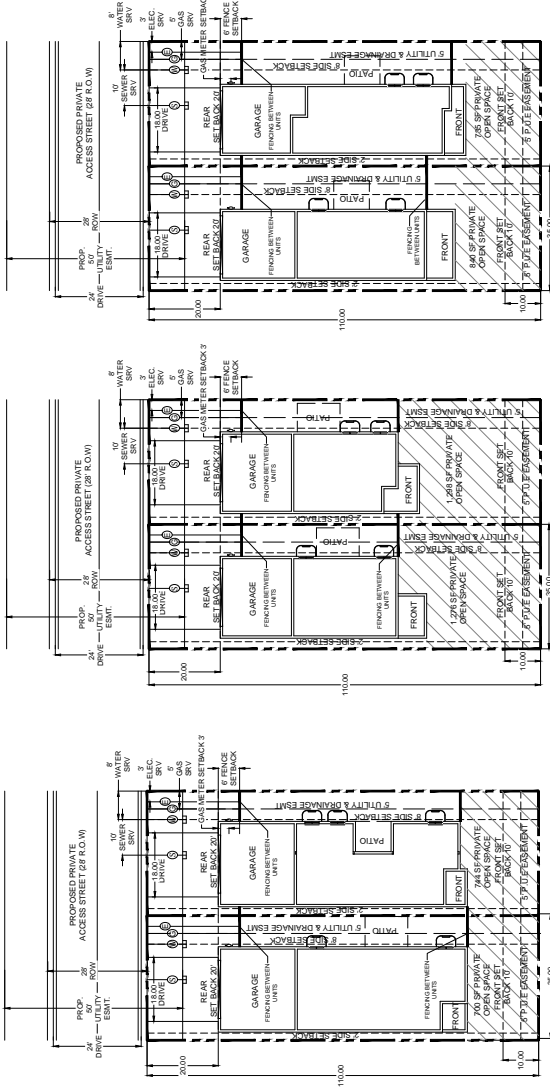


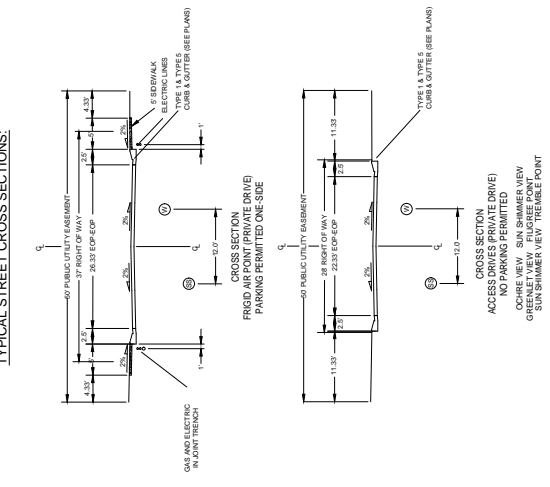
REV #	DATE	REVISIONS
1	11.19	REV1 - RESPONSE TO COMMENTS
2	11.19	REV2 - RESPONSE TO COMMENTS
3	11.19	REV3 - RESPONSE TO COMMENTS
4		
5		
6		

DESIGNED	DRAWN	CHECKED	PROJECT NUMBER	SCALE	AS NOTED
STR 1.18.19	STR 1.18.19	STR 1.18.19	2815.00		

TYPICAL LOT DETAILS:

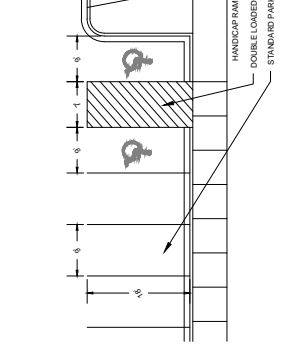
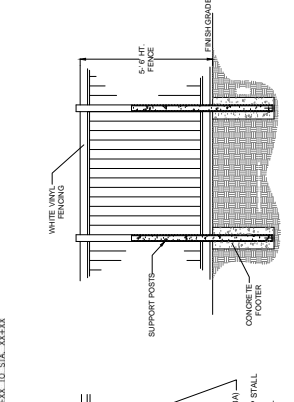
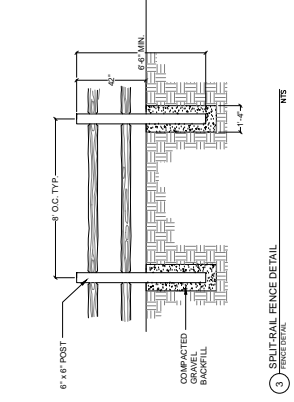
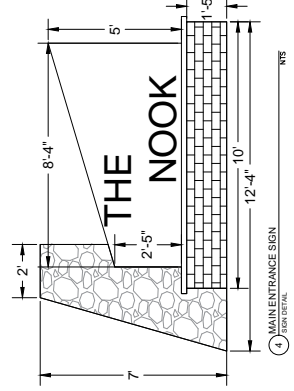


TYPICAL STREET CROSS SECTIONS:



LOT TYPICAL NOTES:

1. LOCATION OF PRIVATE 5' WIDE WALKS, LOCATED IN THE FRONT YARD FOR THE PURPOSE OF PROVIDING PEDESTRIAN ACCESS TO AND FROM COMMON RIGHTS OF WAY, LOCATED IN TRACTS A, B, C, D, F TO THE FRONT ENTRY OF EACH RESIDENCE TO BE DETERMINED BY INDIVIDUAL HOUSE INGRESS/EGRESS CONFIGURATION.
2. ENSURE THAT DRIVEWAYS DO NOT CONFLICT WITH RAMP TRANSITIONS.
3. 5' VINYL FENCING PERMITTED ONLY BETWEEN UNITS AT THE FRONT AND REAR OF THE HOUSE. SAID FENCING MAY BE LOCATED ON OR OVER SHARED PROPERTY LINES WITHIN THE PERMITTED AREA. FINAL LOCATION OF FENCING TO BE DETERMINED BY THE ARCHITECT.
4. THERE SHALL BE NO FENCING PERMITTED AROUND THE FRONT YARD PRIVATE OPEN SPACE.
5. LOTS 33, 54, 57, 58, 60, 67, 83, AND 91 SHALL BE RESTRICTED TO UNIT TYPES 1730.1SW-S AND 1730.1SW-S. FEATURES AND/OR PROJECTIONS WHICH MAY EXTEND UP TO THREE (3) FEET INTO THE REQUIRED SETBACK BELOW OR AT GRADE PROJECTIONS SHALL BE PERMITTED AS SHOWN ON THIS PUD.
7. 5' PUBLIC UTILITY EASEMENT TO BE PROVIDED ALONG THE FRONTS OF ALL LOTS.
8. ACCESSORY STRUCTURES NOT PERMITTED.



City File Number: CPC PUD 19-00013

FIGURE 4

REV #	DATE	REVISIONS
1	1.18.19	REV1 - RESPONSE TO COMMENTS
2	5.6.19	REV2 - RESPONSE TO COMMENTS
3	7.09.19	REV3 - RESPONSE TO COMMENTS
4	7.25.19	REV4 - RESPONSE TO COMMENTS

AS NOTED	SCALE
DESIGNED: STR 1.18.19	CHECKED: JRM 1.18.19
DRAWN: STR 1.18.19	PROJECT NUMBER: 3815.00



FIGURE 4

REV #	REVISIONS	DATE
1	REV1 - RESPONSE TO COMMENTS	4.1.19
2	REV2 - RESPONSE TO COMMENTS	5.6.19
3	REV3 - RESPONSE TO COMMENTS	7.9.19
4		
5		
6		

DESCRIPTION	SUB	DATE
DRAWN	SJR	1.18.19
CHECKED	JMR	38.15.20
PROJECT NUMBER		3815.00

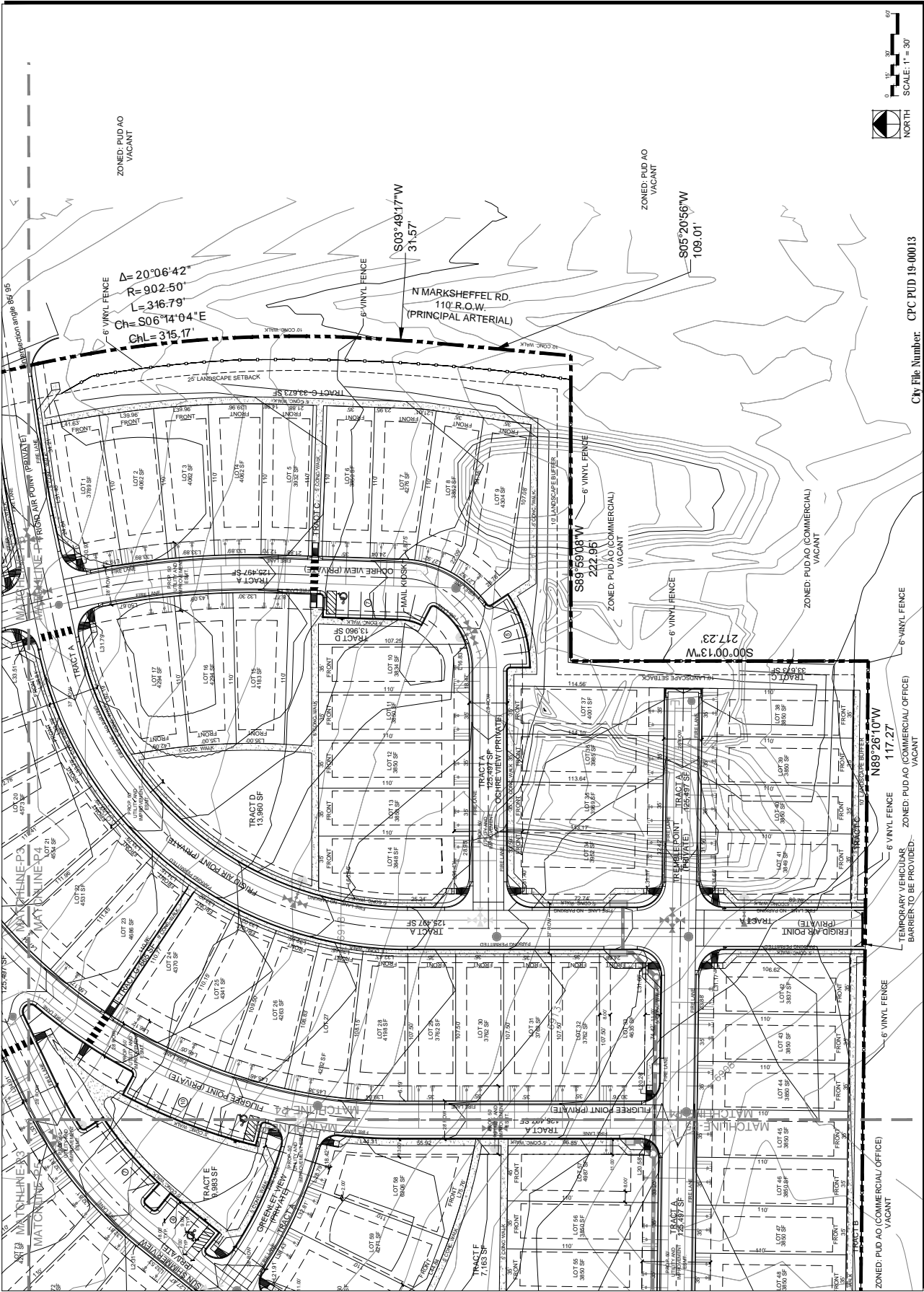


FIGURE 4

REV #	REVISIONS	DATE
1	REV1: RESPONSE TO COMMENTS	4.1.19
2	REV2: RESPONSE TO COMMENTS	5.6.19
3	REV3: RESPONSE TO COMMENTS	7.09.19
4	REV4: RESPONSE TO COMMENTS	7.25.19

REVISIONS	DATE	BY
1	4.1.19	STR
2	5.6.19	STR
3	7.09.19	STR
4	7.25.19	STR

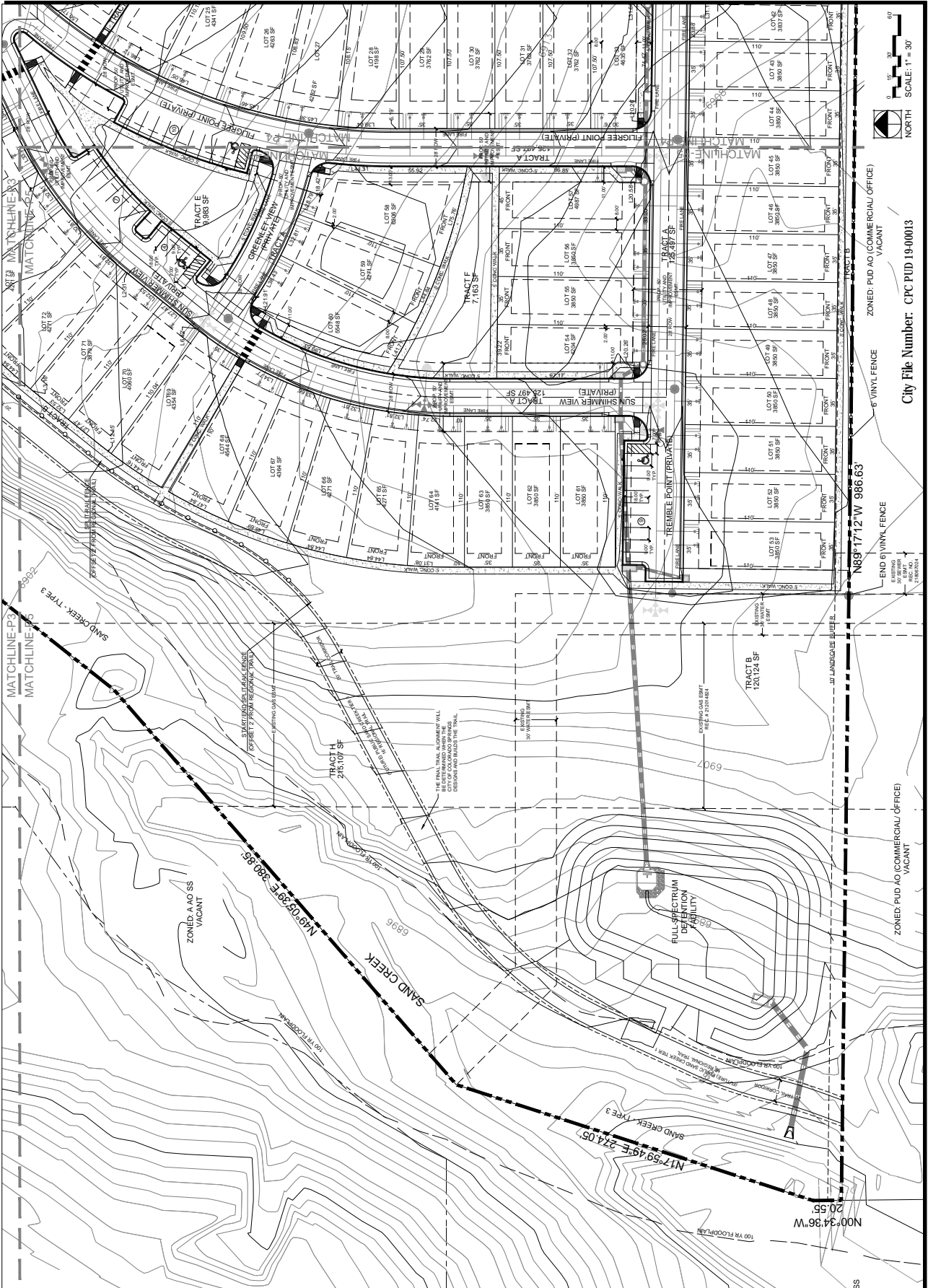


FIGURE 4

DATE	REVISIONS
04.01.18	1 RY1 RESPONSE TO COMMENTS
04.10.18	2 RY2 RESPONSE TO COMMENTS
01.12.19	3 RY3 RESPONSE TO COMMENTS
	4
	5
	6

NO.	SCALE	AS NOTED
00		
01		
02		
03		
04		
05		
06		
07		
08		
09		
10		
11		
12		
13		
14		
15		
16		
17		
18		
19		
20		
21		
22		
23		
24		
25		
26		
27		
28		
29		
30		
31		
32		
33		
34		
35		
36		
37		
38		
39		
40		
41		
42		
43		
44		
45		
46		
47		
48		
49		
50		
51		
52		
53		
54		
55		
56		
57		
58		
59		
60		
61		
62		
63		
64		
65		
66		
67		
68		
69		
70		
71		
72		
73		
74		
75		
76		
77		
78		
79		
80		
81		
82		
83		
84		
85		
86		
87		
88		
89		
90		
91		
92		
93		
94		
95		
96		
97		
98		
99		
100		

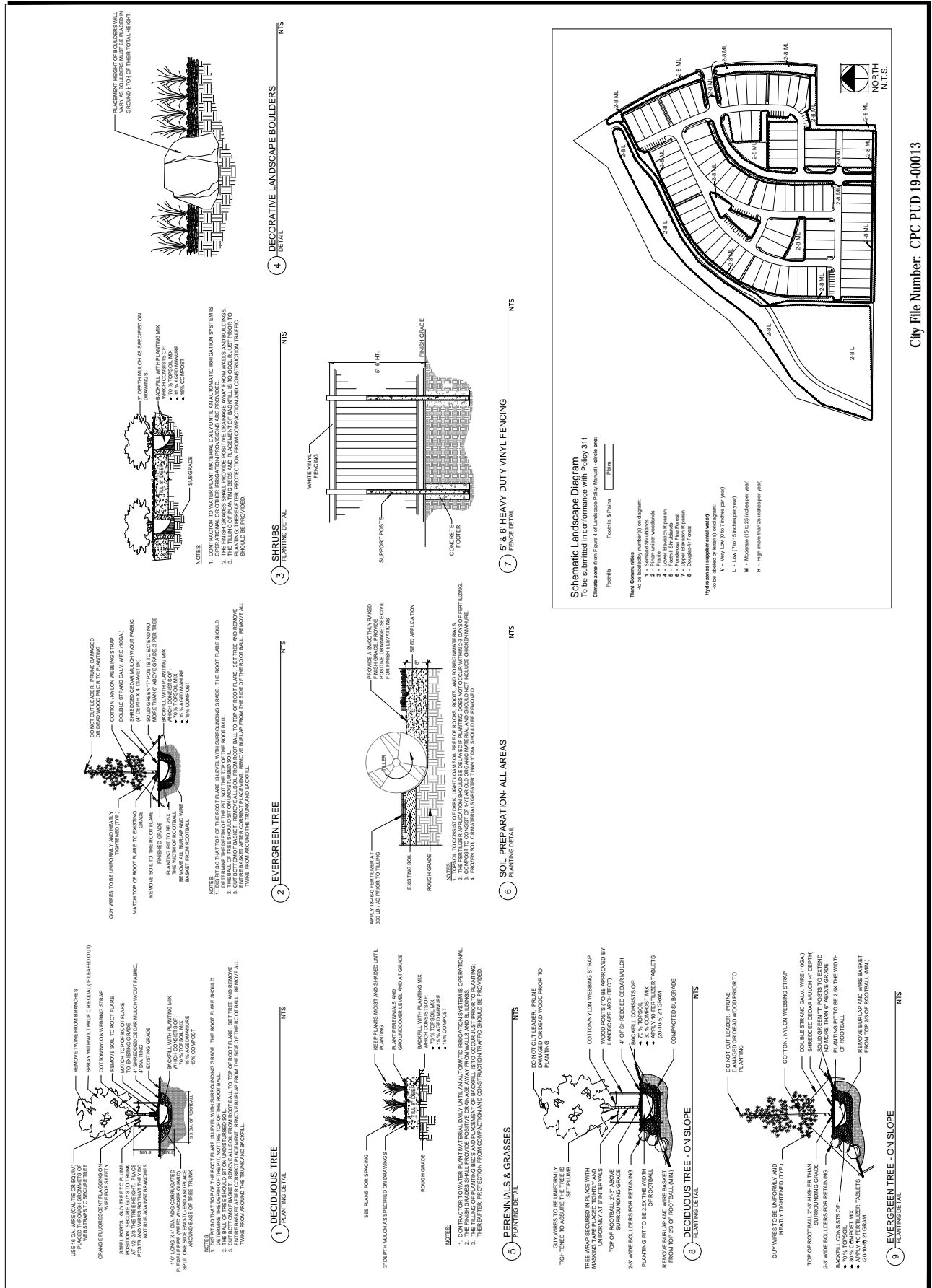


FIGURE 4

REV #	REVISIONS	DATE
1	R101 RESPONSE TO COMMENTS	04.01.18
2	R102 RESPONSE TO COMMENTS	05.16.18
3	R103 RESPONSE TO COMMENTS	06.12.18
4	R104 RESPONSE TO COMMENTS	7.25.18
5	R105 RESPONSE TO COMMENTS	08.14.18
6	R106 RESPONSE TO COMMENTS	09.11.18

SCALE	AS NOTED
PROJECT NUMBER	3815.00
CHECKED	JBA 01.18.18
DRAWN	SJS 01.18.18
DESIGNED	SJS 01.18.18

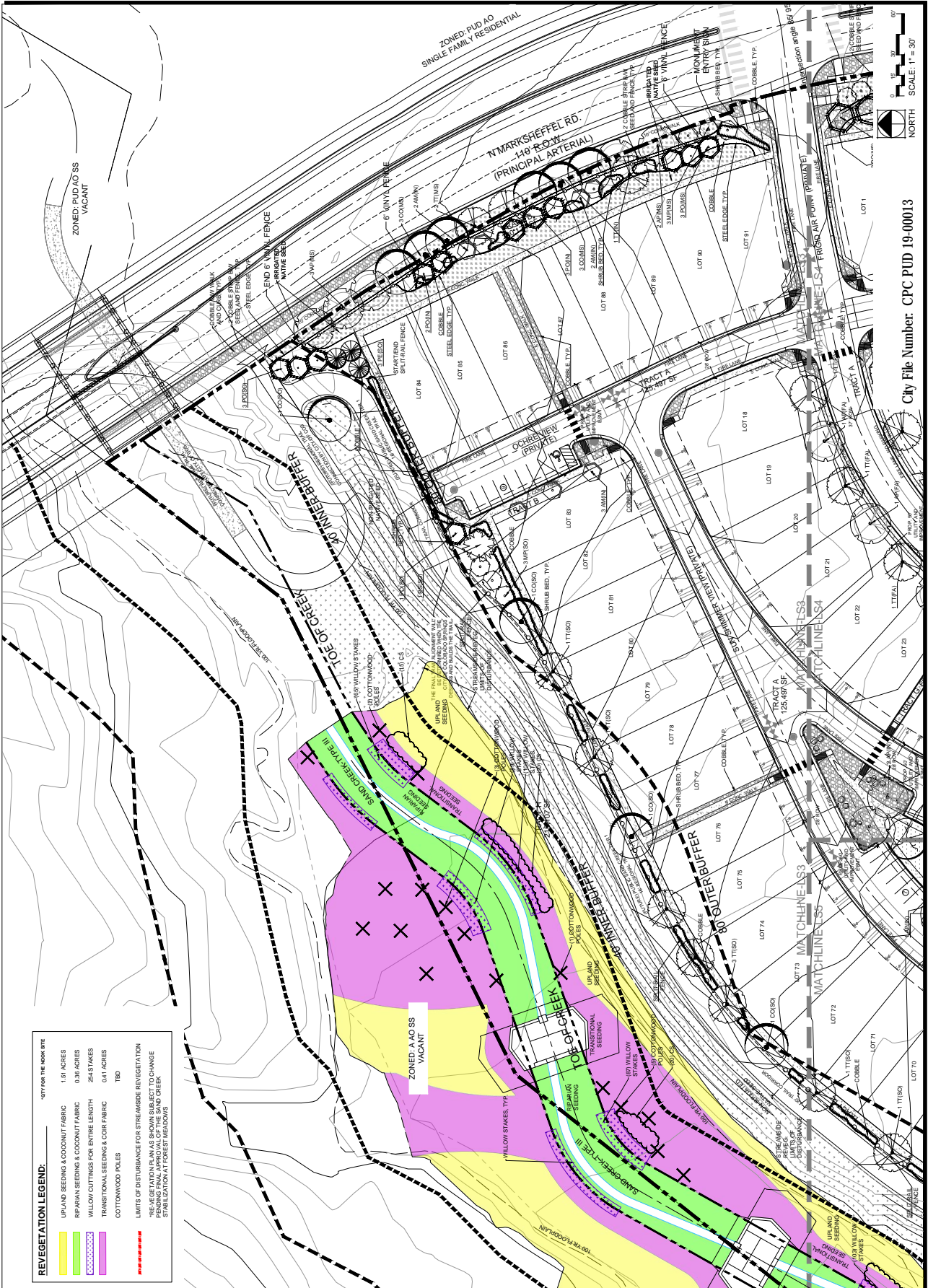
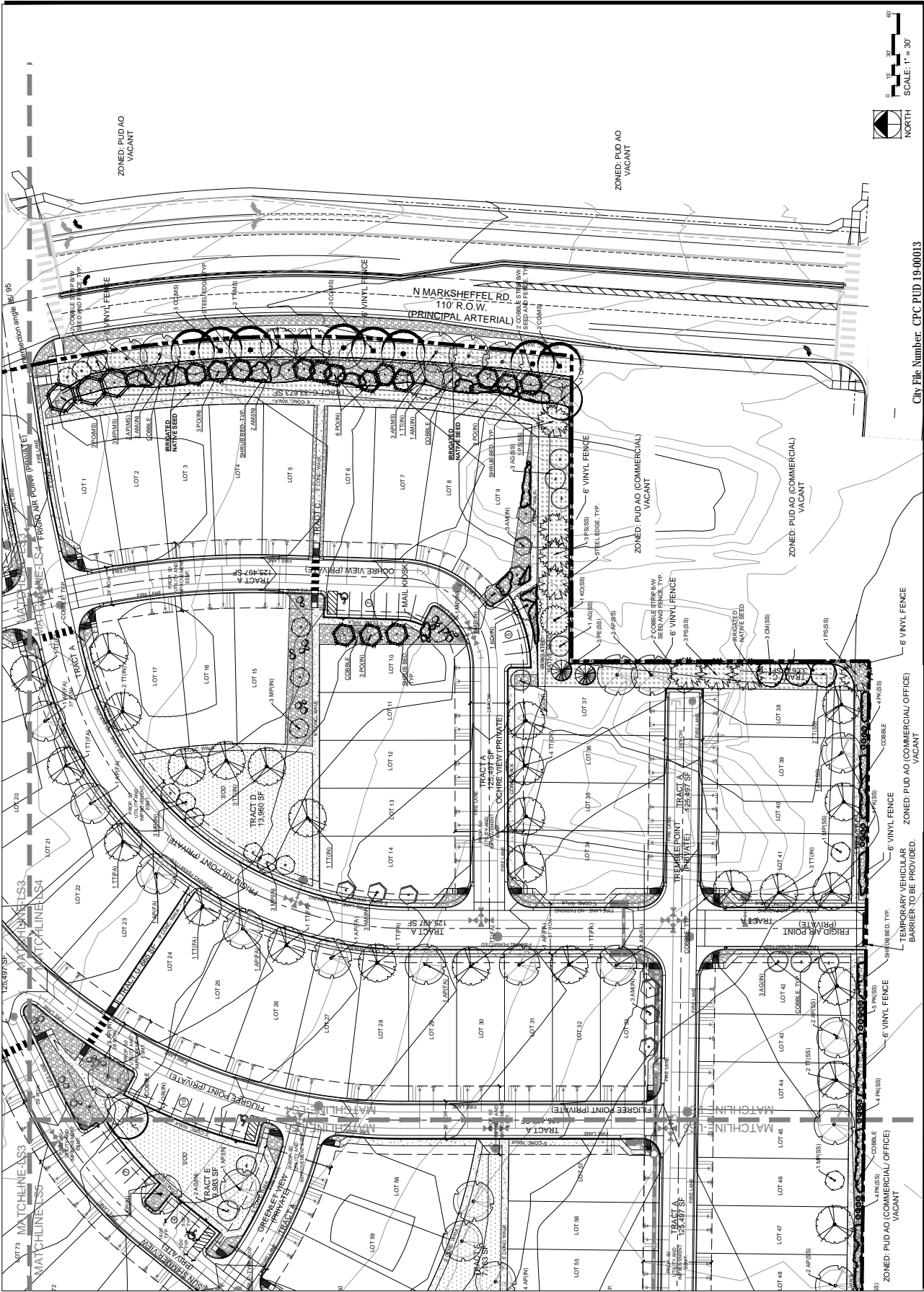
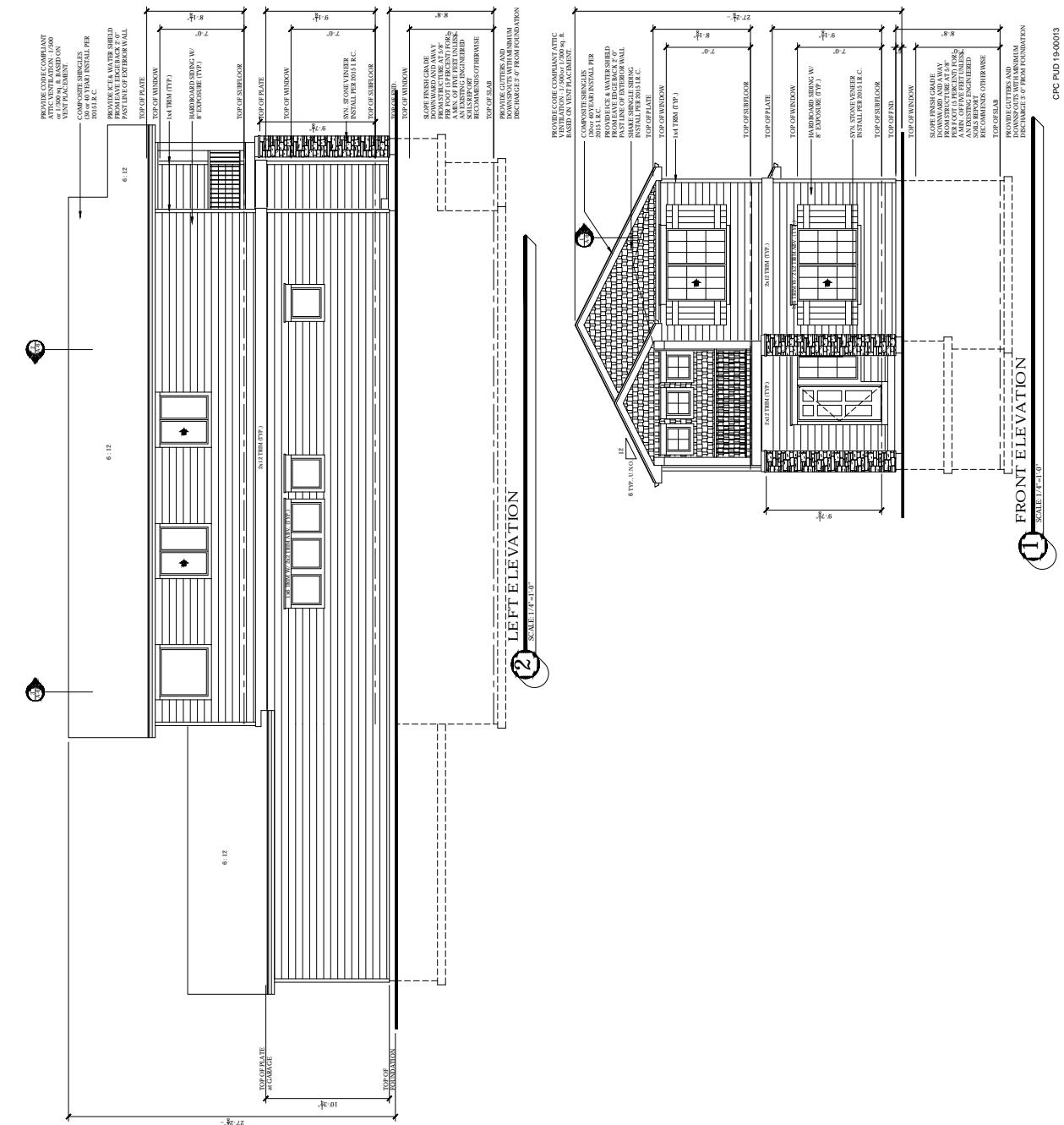


FIGURE 4



City File Number: CPC PUD 19-00013

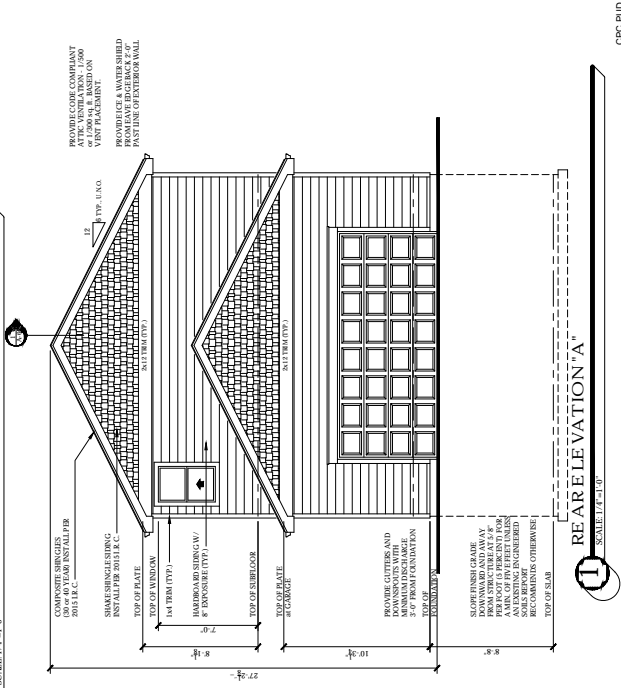
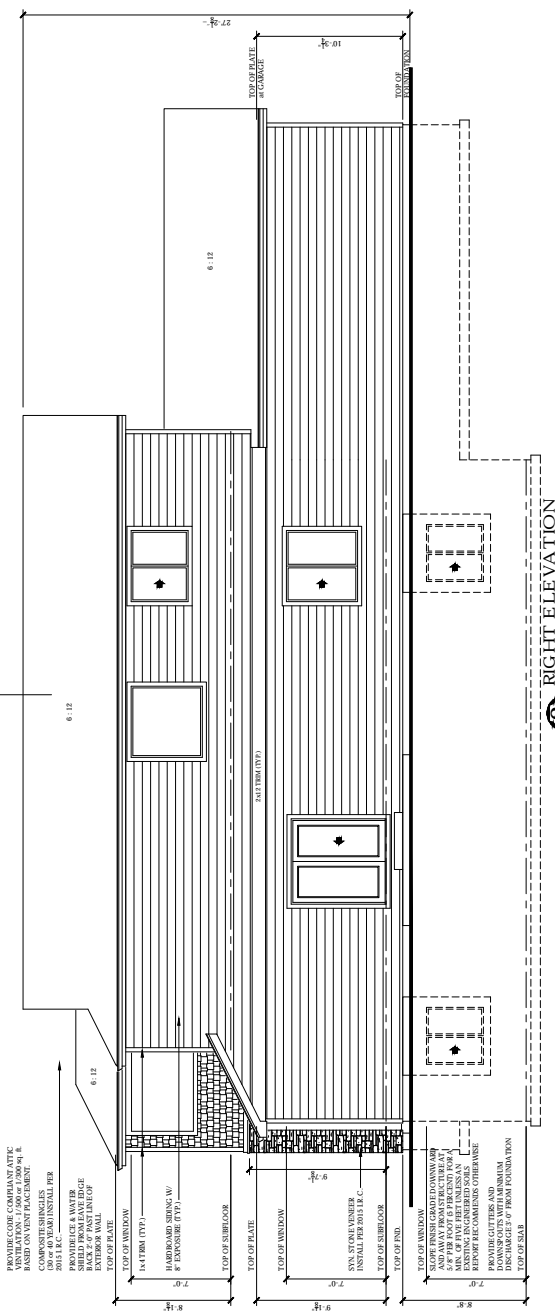
FIGURE 4



TYPICAL ELEVATION NOTES:

- EXTERIOR WALLS: 2" MIN. INSULATION, 1/2" GYPSUM BOARD, 1/2" EXTERIOR FINISH. SEE PLAN FOR WINDOW AND DOOR SIZES AND LOCATIONS.
- ROOFING: 1/2" OSB DECK, 2" MIN. INSULATION, 1/2" GYPSUM BOARD, 1/2" EXTERIOR FINISH. SEE PLAN FOR ROOF PITCH AND GUTTER LOCATIONS.
- WINDOWS: 1/2" MIN. INSULATION, 1/2" GYPSUM BOARD, 1/2" EXTERIOR FINISH. SEE PLAN FOR WINDOW SIZES AND LOCATIONS.
- DOORS: 1/2" MIN. INSULATION, 1/2" GYPSUM BOARD, 1/2" EXTERIOR FINISH. SEE PLAN FOR DOOR SIZES AND LOCATIONS.
- DECK: 2" X 6" JOISTS, 1/2" GYPSUM BOARD, 1/2" EXTERIOR FINISH. SEE PLAN FOR DECK SIZES AND LOCATIONS.
- CHIMNEY: 1/2" MIN. INSULATION, 1/2" GYPSUM BOARD, 1/2" EXTERIOR FINISH. SEE PLAN FOR CHIMNEY SIZES AND LOCATIONS.
- PORCH: 2" X 6" JOISTS, 1/2" GYPSUM BOARD, 1/2" EXTERIOR FINISH. SEE PLAN FOR PORCH SIZES AND LOCATIONS.
- PATIO: 2" X 6" JOISTS, 1/2" GYPSUM BOARD, 1/2" EXTERIOR FINISH. SEE PLAN FOR PATIO SIZES AND LOCATIONS.
- STAIRS: 2" X 6" JOISTS, 1/2" GYPSUM BOARD, 1/2" EXTERIOR FINISH. SEE PLAN FOR STAIR SIZES AND LOCATIONS.
- HANDRAILS: 1/2" MIN. INSULATION, 1/2" GYPSUM BOARD, 1/2" EXTERIOR FINISH. SEE PLAN FOR HANDRAIL SIZES AND LOCATIONS.
- RAILINGS: 1/2" MIN. INSULATION, 1/2" GYPSUM BOARD, 1/2" EXTERIOR FINISH. SEE PLAN FOR RAILING SIZES AND LOCATIONS.
- FENCING: 1/2" MIN. INSULATION, 1/2" GYPSUM BOARD, 1/2" EXTERIOR FINISH. SEE PLAN FOR FENCING SIZES AND LOCATIONS.
- DRIVEWAY: 1/2" MIN. INSULATION, 1/2" GYPSUM BOARD, 1/2" EXTERIOR FINISH. SEE PLAN FOR DRIVEWAY SIZES AND LOCATIONS.
- GARAGE: 1/2" MIN. INSULATION, 1/2" GYPSUM BOARD, 1/2" EXTERIOR FINISH. SEE PLAN FOR GARAGE SIZES AND LOCATIONS.
- ATTIC VENTILATION: 1/2" MIN. INSULATION, 1/2" GYPSUM BOARD, 1/2" EXTERIOR FINISH. SEE PLAN FOR ATTIC VENTILATION SIZES AND LOCATIONS.
- REFER TO SECTIONS FOR ADDITIONAL INFORMATION.

FIGURE 4



TYPICAL ELEVATION NOTES:
 1. INTERIOR MATERIALS: INTERIOR FINISHES ARE SHOWN ON THE INTERIOR OF THE DRAWINGS. ALL FINISHES SHALL BE AS SHOWN UNLESS OTHERWISE NOTED.
 2. EXTERIOR MATERIALS: EXTERIOR FINISHES ARE SHOWN ON THE EXTERIOR OF THE DRAWINGS. ALL FINISHES SHALL BE AS SHOWN UNLESS OTHERWISE NOTED.
 3. HANDRAILS: HANDRAILS SHALL BE PROVIDED AT ALL RISES OF 6" OR MORE.
 4. ROOFING: ROOFING SHALL BE AS SHOWN UNLESS OTHERWISE NOTED.
 5. FLOORING: FLOORING SHALL BE AS SHOWN UNLESS OTHERWISE NOTED.
 6. PAINTS: PAINTS SHALL BE AS SHOWN UNLESS OTHERWISE NOTED.
 7. GLASS: GLASS SHALL BE AS SHOWN UNLESS OTHERWISE NOTED.
 8. METALS: METALS SHALL BE AS SHOWN UNLESS OTHERWISE NOTED.
 9. OTHER: OTHER MATERIALS SHALL BE AS SHOWN UNLESS OTHERWISE NOTED.
 10. REFER TO SECTIONS FOR ADDITIONAL INFORMATION.

FIGURE 4

CPC PUD 18-00013