

N. WEBER REZONE

820, 822, 818, 816, 810 & 812,
222, 228 E. DALE ST.
801, 809 N. NEVADAVE

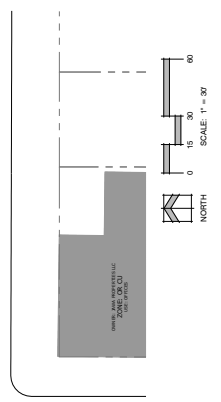
DATE: 06-14-21
DRAWN BY: J. HARRIS
PREPARED BY: B. DAVISON

DEVELOPMENT PLAN

Development Plan

2 OF 3

CPC DP 21-00085



DEVELOPMENT PLAN

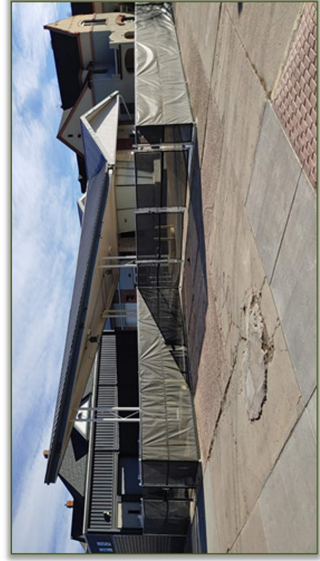
NOTE : PHOTOS REPRESENT CURRENT CONDITIONS AND SIGNIFICANT CHANGES TO ANY BUILDING WILL REQUIRE A DEVELOPMENT PLAN AMENDMENT.



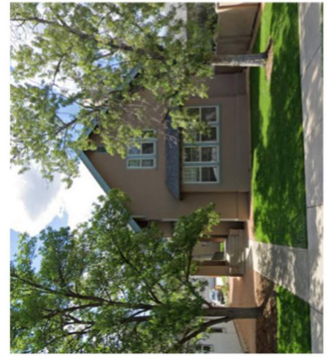
222 E Dale



809 N Nevada



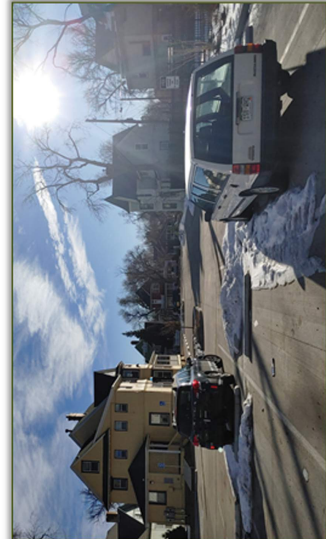
801 N Nevada
TEMPORARY FENCE, SCHEDULED TO BE REMOVED.



820 N Weber



822 N Weber



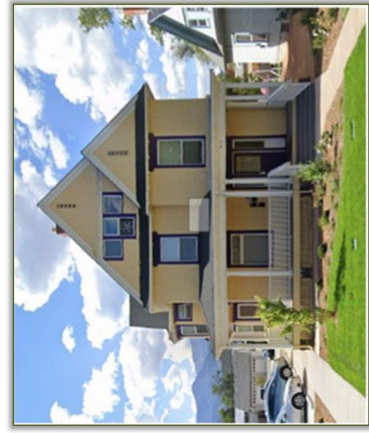
810 & 812 N Weber (View from Alley looking east)



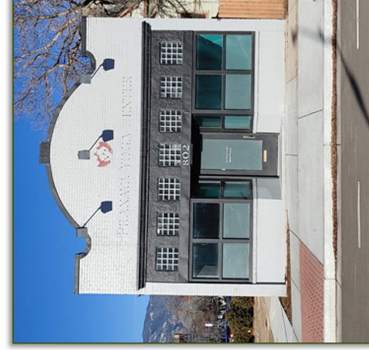
810 & 812 N Weber (View from Weber Street)



818 N Weber



816 N Weber



802 N Weber



228 E Dale

Land Planning
Landscape
Architecture
Urban Design

N.E.S., Inc.
619 N. Cascade Avenue, Suite 200
Colorado Springs, CO 80903
Tel. 719.471.0073
Fax. 719.471.0067
www.nesarchitects.com
© 2012, All Rights Reserved.

**N. WEBER
REZONE**

820, 822, 818, 816, 810 & 812,
222, 228 E DALE ST,
801, 802, 809 N. NEVADA AVE

DATE: 06-16-21
DRAWN BY: J. HARRIS
CHECKED BY: J. HARRIS
PREPARED BY: J. HARRIS & DAVISON

DEVELOPMENT
PLAN

DATE: 06-16-21
BY: J. HARRIS

BUILDING ELEVATIONS

3 OF 3