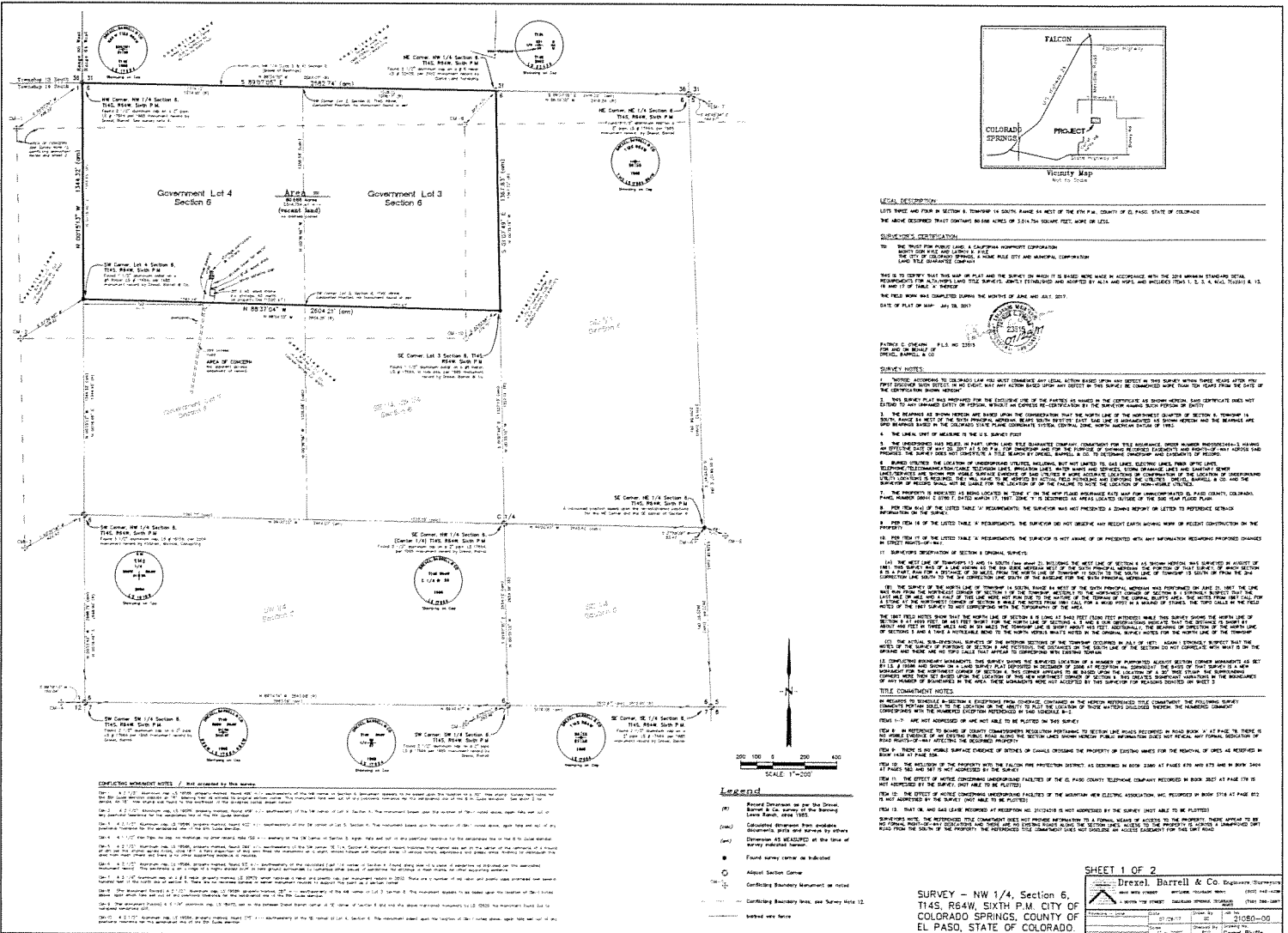


**EXHIBIT A**  
Legal Description

LOTS THREE AND FOUR IN SECTION 6, TOWNSHIP 14 SOUTH, RANGE 64 WEST OF THE  
6TH P.M., COUNTY OF EL PASO, STATE OF COLORADO.

# EXHIBIT B



**LEGAL DESCRIPTION**  
 LOTS THREE AND FOUR IN SECTION 6, TOWNSHIP 14 NORTH RANGE 64 WEST OF THE 6TH P.M. COUNTY OF EL PASO, STATE OF COLORADO.  
 THE ABOVE DESCRIBED TRACT CONTAINS 80.00 ACRES OF 3.2474 VOLUME FEET WORK OF LEVEL.

**PLANNING AND ZONING**  
 THE CITY OF COLORADO SPRINGS, COLORADO HAS ADOPTED THE CITY AND MUNICIPAL COMPREHENSIVE LAND USE ORDINANCE, CHAPTER 14-10, AS AMENDED.

THIS IS TO CERTIFY THAT THIS MAP WAS MADE AND THE SURVEY IS MADE IN ACCORDANCE WITH THE 2011 AMERICAN STANDARD MEASUREMENT SYSTEM (ANSI Z39-18-2011) AND THE SURVEY IS MADE IN ACCORDANCE WITH THE 2011 AMERICAN STANDARD MEASUREMENT SYSTEM (ANSI Z39-18-2011).

DATE OF PLAN: MAY 14, 2013

**PLANNING AND ZONING**  
 THE SURVEY IS MADE IN ACCORDANCE WITH THE 2011 AMERICAN STANDARD MEASUREMENT SYSTEM (ANSI Z39-18-2011).

**PLANNING AND ZONING**  
 THE SURVEY IS MADE IN ACCORDANCE WITH THE 2011 AMERICAN STANDARD MEASUREMENT SYSTEM (ANSI Z39-18-2011).

**PLANNING AND ZONING**  
 THE SURVEY IS MADE IN ACCORDANCE WITH THE 2011 AMERICAN STANDARD MEASUREMENT SYSTEM (ANSI Z39-18-2011).

**PLANNING AND ZONING**  
 THE SURVEY IS MADE IN ACCORDANCE WITH THE 2011 AMERICAN STANDARD MEASUREMENT SYSTEM (ANSI Z39-18-2011).

**PLANNING AND ZONING**  
 THE SURVEY IS MADE IN ACCORDANCE WITH THE 2011 AMERICAN STANDARD MEASUREMENT SYSTEM (ANSI Z39-18-2011).

**PLANNING AND ZONING**  
 THE SURVEY IS MADE IN ACCORDANCE WITH THE 2011 AMERICAN STANDARD MEASUREMENT SYSTEM (ANSI Z39-18-2011).

**PLANNING AND ZONING**  
 THE SURVEY IS MADE IN ACCORDANCE WITH THE 2011 AMERICAN STANDARD MEASUREMENT SYSTEM (ANSI Z39-18-2011).

**PLANNING AND ZONING**  
 THE SURVEY IS MADE IN ACCORDANCE WITH THE 2011 AMERICAN STANDARD MEASUREMENT SYSTEM (ANSI Z39-18-2011).

**PLANNING AND ZONING**  
 THE SURVEY IS MADE IN ACCORDANCE WITH THE 2011 AMERICAN STANDARD MEASUREMENT SYSTEM (ANSI Z39-18-2011).

**PLANNING AND ZONING**  
 THE SURVEY IS MADE IN ACCORDANCE WITH THE 2011 AMERICAN STANDARD MEASUREMENT SYSTEM (ANSI Z39-18-2011).

**PLANNING AND ZONING**  
 THE SURVEY IS MADE IN ACCORDANCE WITH THE 2011 AMERICAN STANDARD MEASUREMENT SYSTEM (ANSI Z39-18-2011).

**PLANNING AND ZONING**  
 THE SURVEY IS MADE IN ACCORDANCE WITH THE 2011 AMERICAN STANDARD MEASUREMENT SYSTEM (ANSI Z39-18-2011).

**PLANNING AND ZONING**  
 THE SURVEY IS MADE IN ACCORDANCE WITH THE 2011 AMERICAN STANDARD MEASUREMENT SYSTEM (ANSI Z39-18-2011).

**PLANNING AND ZONING**  
 THE SURVEY IS MADE IN ACCORDANCE WITH THE 2011 AMERICAN STANDARD MEASUREMENT SYSTEM (ANSI Z39-18-2011).

**PLANNING AND ZONING**  
 THE SURVEY IS MADE IN ACCORDANCE WITH THE 2011 AMERICAN STANDARD MEASUREMENT SYSTEM (ANSI Z39-18-2011).

**PLANNING AND ZONING**  
 THE SURVEY IS MADE IN ACCORDANCE WITH THE 2011 AMERICAN STANDARD MEASUREMENT SYSTEM (ANSI Z39-18-2011).

**PLANNING AND ZONING**  
 THE SURVEY IS MADE IN ACCORDANCE WITH THE 2011 AMERICAN STANDARD MEASUREMENT SYSTEM (ANSI Z39-18-2011).

**PLANNING AND ZONING**  
 THE SURVEY IS MADE IN ACCORDANCE WITH THE 2011 AMERICAN STANDARD MEASUREMENT SYSTEM (ANSI Z39-18-2011).

**PLANNING AND ZONING**  
 THE SURVEY IS MADE IN ACCORDANCE WITH THE 2011 AMERICAN STANDARD MEASUREMENT SYSTEM (ANSI Z39-18-2011).

**PLANNING AND ZONING**  
 THE SURVEY IS MADE IN ACCORDANCE WITH THE 2011 AMERICAN STANDARD MEASUREMENT SYSTEM (ANSI Z39-18-2011).

**PLANNING AND ZONING**  
 THE SURVEY IS MADE IN ACCORDANCE WITH THE 2011 AMERICAN STANDARD MEASUREMENT SYSTEM (ANSI Z39-18-2011).

**PLANNING AND ZONING**  
 THE SURVEY IS MADE IN ACCORDANCE WITH THE 2011 AMERICAN STANDARD MEASUREMENT SYSTEM (ANSI Z39-18-2011).

**PLANNING AND ZONING**  
 THE SURVEY IS MADE IN ACCORDANCE WITH THE 2011 AMERICAN STANDARD MEASUREMENT SYSTEM (ANSI Z39-18-2011).

**PLANNING AND ZONING**  
 THE SURVEY IS MADE IN ACCORDANCE WITH THE 2011 AMERICAN STANDARD MEASUREMENT SYSTEM (ANSI Z39-18-2011).

**PLANNING AND ZONING**  
 THE SURVEY IS MADE IN ACCORDANCE WITH THE 2011 AMERICAN STANDARD MEASUREMENT SYSTEM (ANSI Z39-18-2011).

**PLANNING AND ZONING**  
 THE SURVEY IS MADE IN ACCORDANCE WITH THE 2011 AMERICAN STANDARD MEASUREMENT SYSTEM (ANSI Z39-18-2011).

**PLANNING AND ZONING**  
 THE SURVEY IS MADE IN ACCORDANCE WITH THE 2011 AMERICAN STANDARD MEASUREMENT SYSTEM (ANSI Z39-18-2011).

**PLANNING AND ZONING**  
 THE SURVEY IS MADE IN ACCORDANCE WITH THE 2011 AMERICAN STANDARD MEASUREMENT SYSTEM (ANSI Z39-18-2011).