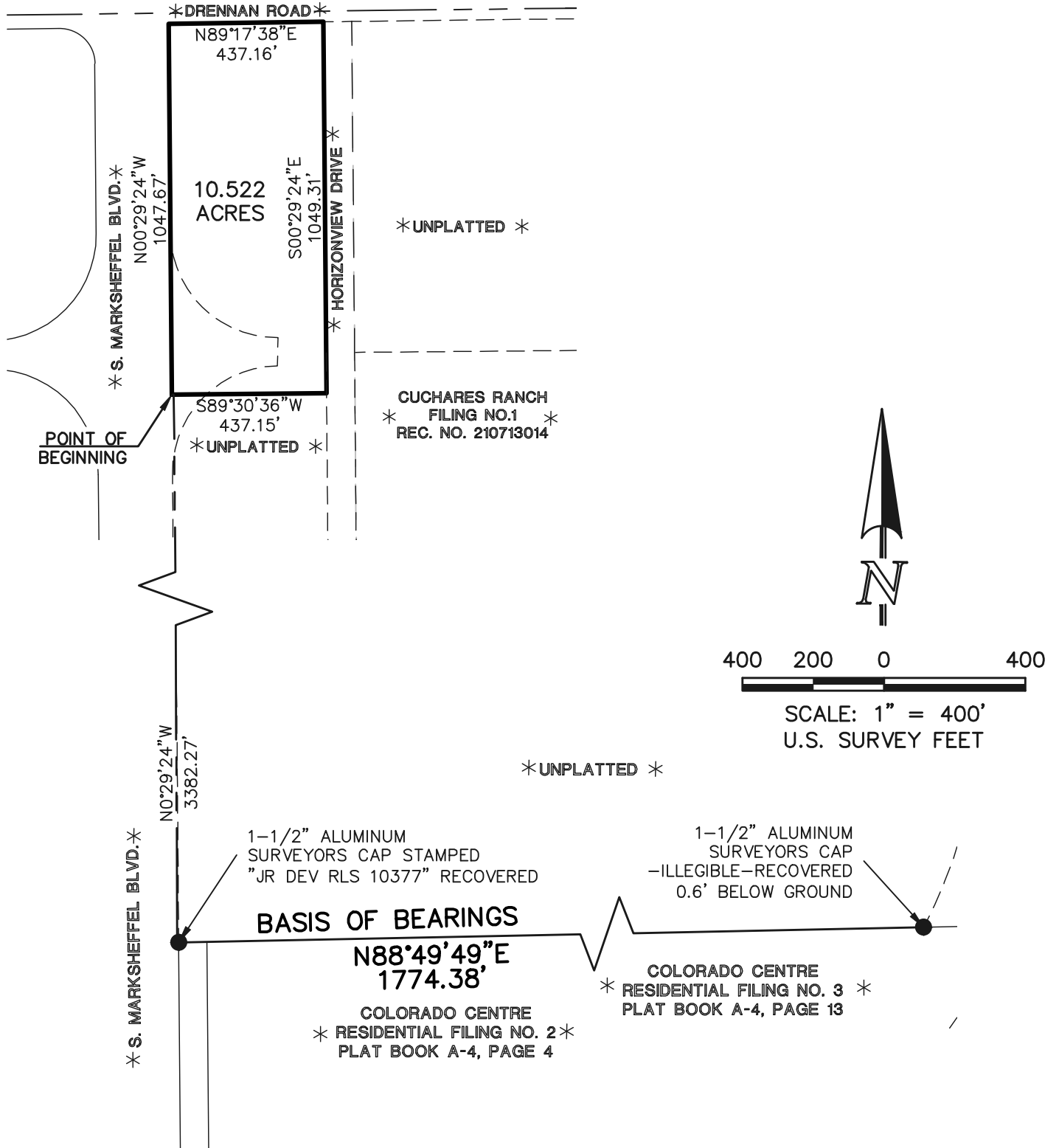


**EXHIBIT C**

Initial District Boundary Map

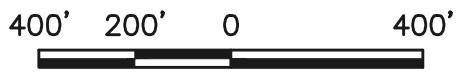
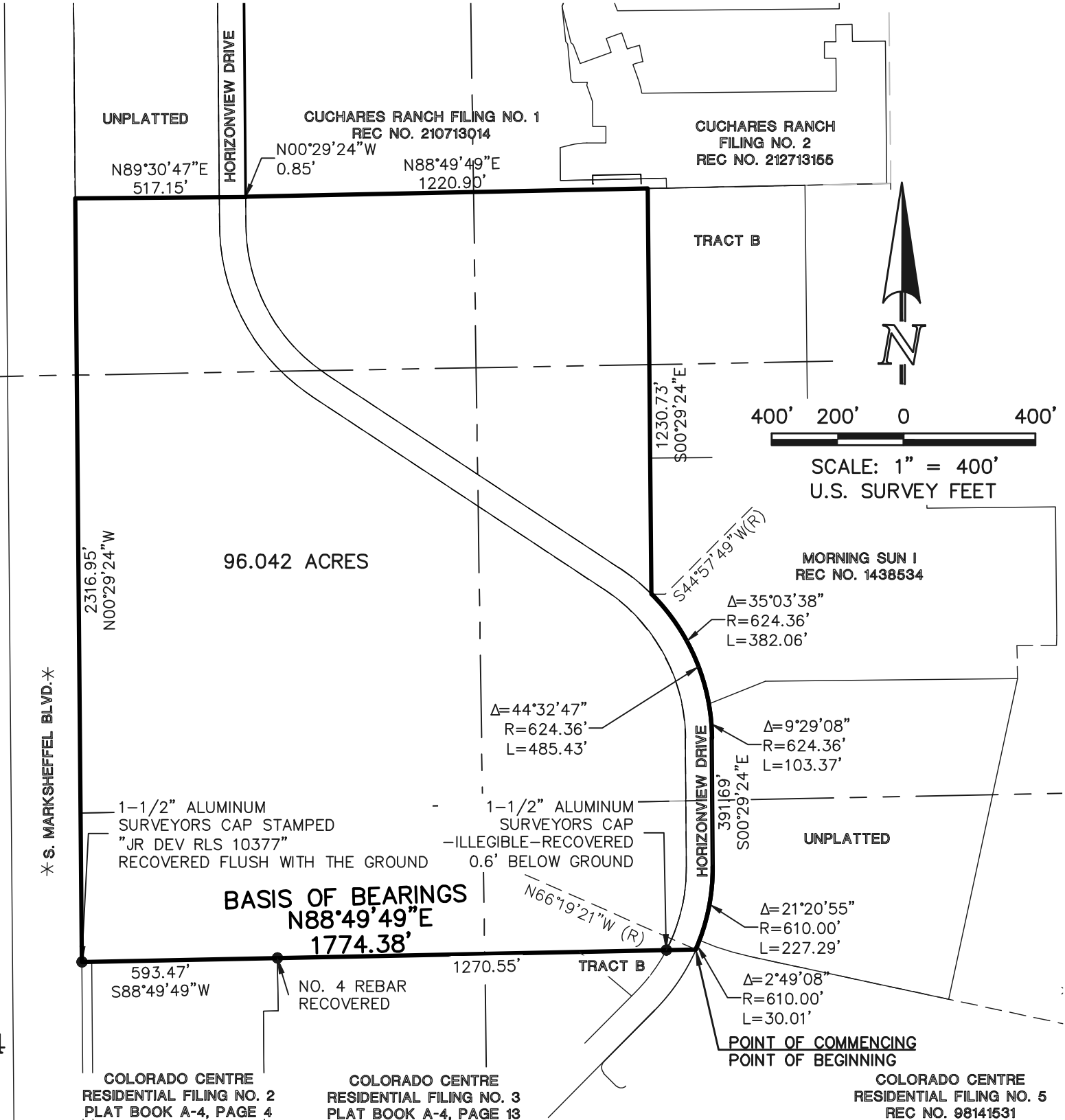


619 North Cascade Avenue, Suite 200  
 Colorado Springs, Colorado 80903  
 (719)785-0790





619 North Cascade Avenue, Suite 200  
 Colorado Springs, Colorado 80903  
 (719)785-0790



SCALE: 1" = 400'  
 U.S. SURVEY FEET

MORNING SUN I  
 REC NO. 1438534

**BASIS OF BEARINGS**  
 N88°49'49"E  
 1774.38'

**POINT OF COMMENCING**  
**POINT OF BEGINNING**

COLORADO CENTRE  
 RESIDENTIAL FILING NO. 2  
 PLAT BOOK A-4, PAGE 4

COLORADO CENTRE  
 RESIDENTIAL FILING NO. 3  
 PLAT BOOK A-4, PAGE 13

COLORADO CENTRE  
 RESIDENTIAL FILING NO. 5  
 REC NO. 98141531



619 North Cascade Avenue, Suite 200  
 Colorado Springs, Colorado 80903  
 (719)785-0790

