

Mountain Valley Metropolitan District Service Plan

City Council Work Session
August 22, 2016

Peter Wysocki, Planning and Community Development
Director
Carl Schueler, Planning Manager- Comprehensive Planning
David O'Leary Esq. , representing the petitioner

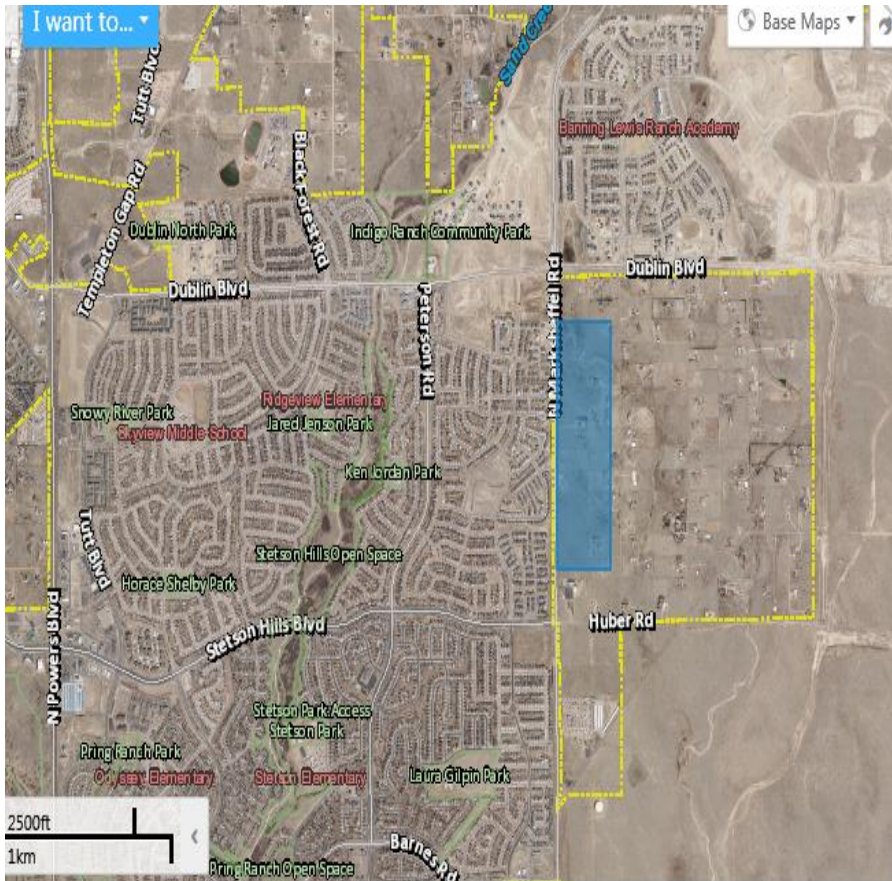


Summary

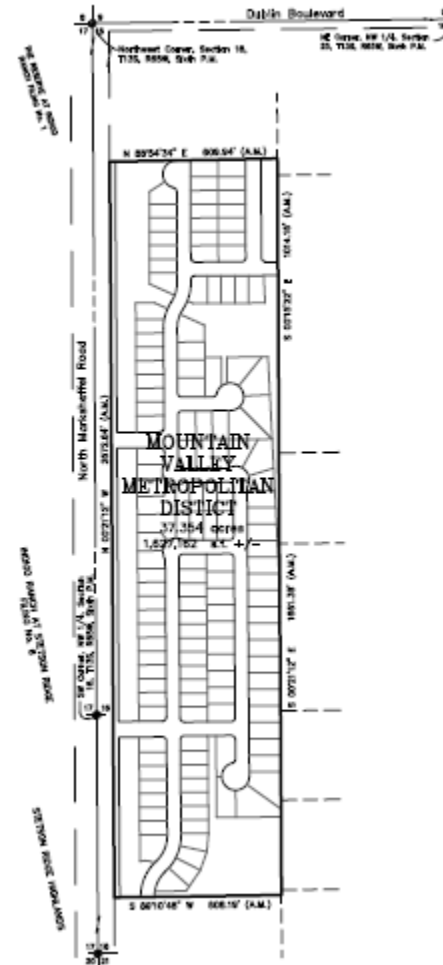


- Standard residential metropolitan district for a small residential area
 - About 37.35 acres and 141 single-family dwelling units
- Consistent with Special District Policy and Model Service Plan
- Maximum debt authorization of \$7,267,000
- 30.0 mills debt service and 10.0 mills operations
- 40-year maximum debt service mill levy imposition term

Area and district map



DISTRICT EXHIBIT



SCALE: 1"=400'

Estimated Costs and Financial Projections



- \$5.8 Million in projected costs
- Not all reimbursable at 30.0 mills debt service
- Assumed 3-year buildout and 2019 bond issue
- All projected at this time

Supporting Materials



- Staff memo
- Draft resolution
- Clean and redline service plans
- Transmittal letter/ executive summary
- Cost estimates
- Financial plan

Recommendation and Next Steps



- Approval, based on consistency with Policy
- No prohibition/ policy on “small” districts or “proliferation”
- New Business on September 13, 2016