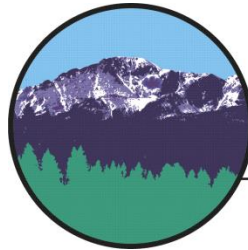


COLORADO SPRINGS REGIONAL JOINT LAND USE STUDY



Pikes Peak Area
Council of Governments

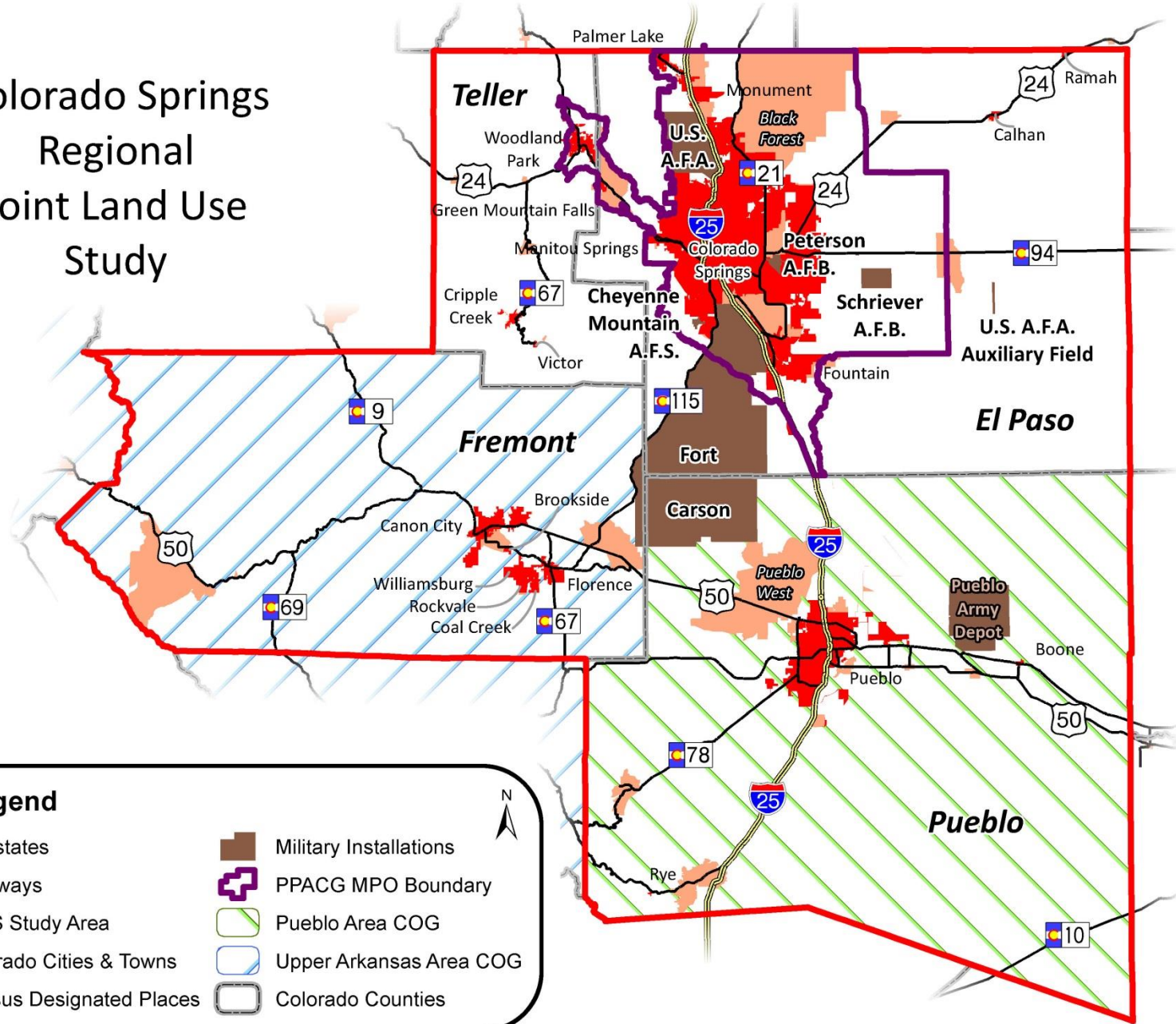
Communities Working Together

What's a joint land use study?

- A community-focused process
- Examines local issues related to land use when military installations and communities are neighbors
- Will produce a road map to address the issues, promote compatible land use



Colorado Springs Regional Joint Land Use Study



Legend

	Interstates		Military Installations
	Highways		PPACG MPO Boundary
	JLUS Study Area		Pueblo Area COG
	Colorado Cities & Towns		Upper Arkansas Area COG
	Census Designated Places		Colorado Counties

What will it cover?

- Detailed land use assessment
- Inventory of compatibility challenges
- Assessment of regional growth trends
- Resources that will facilitate community-development decision-making
- Recommendations and strategies to promote compatible land use

Study partners

- PPACG (project manager)
- Local military installations
- Elected officials and staff from El Paso, Pueblo, Fremont, Teller counties, metropolitan districts and cities
- Federal Office of Economic Adjustment (project sponsor)
- Colorado Department of Veterans and Military Affairs
- Regional Business Alliance
- U.S. Forest Service
- Federal Aviation Administration
- Colorado Department of Transportation
- Bureau of Land Management
- Pueblo Chamber of Commerce
- Colorado Springs Airport
- Legislators and community leaders
- Area residents

Issues to discuss

- Water, stormwater, waterways
- Trails, recreation, and cultural resources
- Use of airspace
- Transportation
- Alternative energy development
- Noise and/or vibration
- Other challenges identified by community



Public input



- Telephone town halls
- Speakers bureau
- Community meetings
- Email updates
- Web-based comments:
- **Take the community survey at ppacg.org by May 31**

Next steps

- Research:
 - Compile and analyze community feedback
 - Installation documents
 - Community documents
- Draft plan to community (Fall of 2017)
- Implementation plan (2018)

Contact us

- www.ppacg.org/jlus
- JLUS@ppacg.org
- 719-471-7080



The screenshot shows the website for the Pikes Peak Area Council of Governments. The header includes the organization's logo and name, a search bar, and social media icons for Facebook, Twitter, and YouTube. A navigation menu is visible with options: ABOUT US, TRANSPORTATION, AGING, ENVIRONMENT, MILITARY, PPRTA, COMMITTEES, and CONTACT US. The main content area features a sidebar with a 'JLUS MENU' containing links for JLUS COMMITTEES, JLUS LIBRARY, MAPS, MEETINGS, and CONTACT JLUS. The main heading is 'Joint Land Use Study'. The text below the heading states: 'In October 2015, PPACG was awarded a two-year grant from the Department of Defense to conduct a Joint Land Use Study. This study examines impacts of existing and future land uses and missions of three military installations in the Pikes Peak region: the Air Force Academy, Fort Carson, and Peterson Air Force Base (including Cheyenne Mountain Air Force Station.) This [factsheet](#) describes the project in more detail.' Below this, it says: 'The study will be a community-driven, cooperative, strategic planning process among the three installations, the surrounding local jurisdictions, and the State of Colorado. The goal of the study is to encourage jointly beneficial adjacent land uses.' At the bottom, it begins: 'Data collection and analysis and public input will cover:'

Typical JLUS Organization

Responsibilities

Coordination
Accountability
Grant Management

Policy Direction
Study Design/Oversight
Budget Approval
Monitoring
Report Adoption

Technical Issues
Alternatives
Report Development
Recommendations

**Study
Sponsor**

**Policy
Committee**

**Working
Group**

**Technical
Committee**

**Technical
Committee**

**Technical
Committee**

Participants

Council of Governments
City/County Planning Committees
Airport Authority

City Officials
County Officials
Base Leadership
Private Sector Leadership
State Officials

Local and Base Planners
Community Staff
Business Representatives
Residents

COLORADO SPRINGS REGIONAL JOINT LAND USE STUDY

Policy committee

- Ft. Carson
- Peterson and Schriever Air Force Bases
- Cheyenne Mtn. Air Force Station
- Air Force Academy
- State Department of Military and Veterans Affairs
- PPACG
- Cities of Colorado Springs, Fountain, Pueblo
- El Paso, Fremont, and Teller counties
- Colorado Springs Regional Business Alliance
- Pueblo West Metro District
- Town of Monument
- U.S. Forest Service
- Federal Aviation Administration

Technical committee

- Planning directors for Colorado Springs, Monument, Fremont and Pueblo counties
- Fountain deputy city manager
- El Paso County executive director
- Teller County director of community development
- CDOT region 2 engineer
- Pueblo West metro district manager
- Department of Military and Veterans Affairs resource director
- Colorado Springs Utilities systems extension manager
- Parks and Wildlife conservation biologist
- Ft. Carson director of public works
- Peterson, Cheyenne Mountain civil engineering squadron deputy directors
- Schriever commander
- Air Force Academy installation management chief
- Bureau of Land Management field manager
- FAA air traffic manager
- USDA Soil Conservation Service