

**KETTLE CREEK
NORTH**

PUD CONCEPT PLAN

COLORADO SPRINGS, CO

DATE: 10/2012
PREPARED BY: R. HANSTON

DATE	BY	DESCRIPTION
10/19/12	RHS	REVISED CITY
12/19/12	RHS	REVISED CITY
12/13/12	RHS	REVISED CITY
		REVIEW COMMENTS:

**LAND SUITABILITY ANALYSIS
COMPOSITE MAP**

2
1 OF 2
CPC #12 19-00090
CPC PUD 19-00091

LEGEND

- FORESTED AREA
- SHORTGRASS PRAIRIE
- WETLAND
- PREBELS MEADOW JUMPING
- MOUSE CRITICAL HABITAT LINE
- 100 YEAR FLOODPLAIN

SLOPE ANALYSIS LEGEND

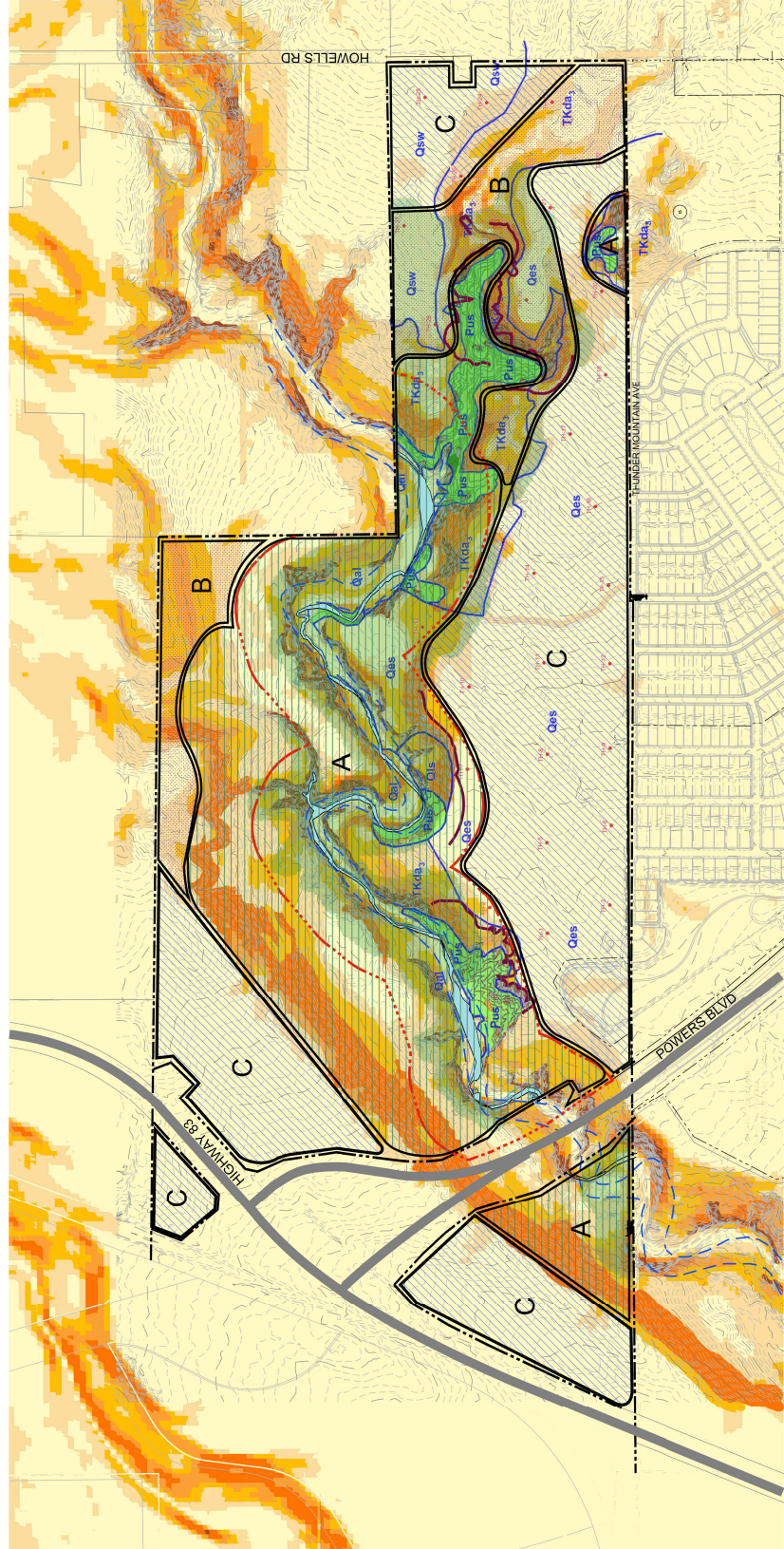
- 0% TO 5%
- 5% TO 8%
- 8% TO 12%
- 12% TO 15%
- 15% TO 25%
- 25% AND UP

CONSTAINED / PRESERVED

- A**
- B**
- C**

SOME CONSTRAINTS

NO CONSTRAINTS



LEGEND:

- TH-1 APPROXIMATE LOCATION OF EXPLORATORY BORING.
- GEOLOGIC UNITS AND (MODIFIERS):
 - TKda₃ SURFICIAL GEOLOGIC CONTACTS
 - Qal ALLUVIUM IN STREAM CHANNELS; SAND
 - Qsw SLOPEWASH COLLUVIUM; SAND AND CLAY
 - Qes EOLIAN SILTY SAND
 - Qls PRE-HOLOCENE LANDSLIDE; CURRENTLY DORMANT AND INACTIVE WITH WELL-DEVELOPED DRAINAGE PATTERN
- DAWSON FORMATION; FACIES UNIT 3; DOMINANTLY SANDSTONE WITH SOME CLAYSTONE
- POTENTIALLY UNSTABLE AND UNSTABLE SLOPES; POTENTIALLY UNSTABLE STREAM BANKS AND PROXIMATE AREAS
- GEOLOGIC SETBACK LINE

NOTES:

- BASE DRAWING WAS PROVIDED BY VINTAGE COMMUNITIES IN AN EMAIL DATED APRIL 5, 2018.
- ALL BOUNDARIES SHOWN SHOULD BE CONSIDERED INTERPRETATION OF PUBLISHED MAPS, AERIAL PHOTOGRAPHS AND AN INITIAL FIELD RECONNAISSANCE. CHANGES IN THE MAPPED BOUNDARIES SHOWN ARE POSSIBLE AND SHOULD BE INFORMATION. ALL INTERPRETATIONS AND CONDITIONS SHOWN ARE PRELIMINARY AND FOR LAND-USE PLANNING ONLY.

FIGURE 1